



News+FLASH is the digital offspring of INTERSECTION. It is published digitally each fortnight for the foreseeable future, until we run out of ideas, articles or money.

Dialogue with JLW

Reported by Ar. Chai Si Yong

In early May, PAMSC was invited to attend a workshop organised by Jones Lang Wootton (JLW) as 3rd party consultant to review the institutional structure for Sarawak. This workshop was initiated by the Economic Planning Unit Sarawak (EPU). A casual dialogue session was called between JLW and PAMSC on 17th June 2021, for JLW to have a better understanding of the feedback provided by PAMSC during the workshop.

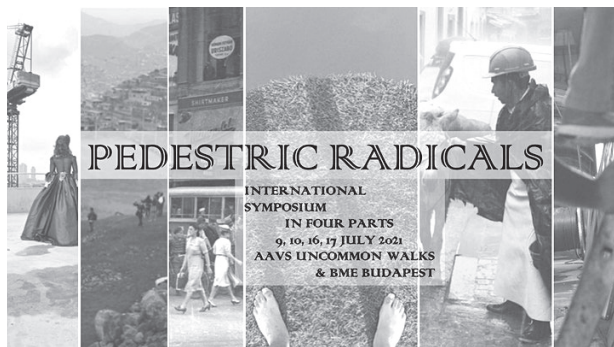
Some salient points during the dialogue are as follows:

- Level of detail for sketch building plan requirement for Planning Submission
- Timeline for Planning & Building Plan Submission
- eSPA online submission
- Schedule for SPA Meetings

PAMSC proposed took the opportunity to propose the following:

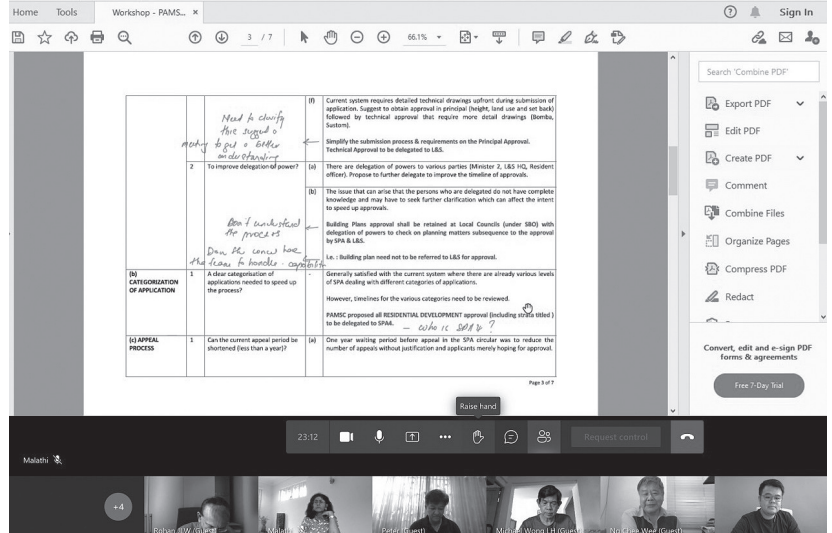
- Planning approval in 2 stages: Principal Approval & Technical Approval
- Simplify the planning submission (requirements and processes)
- Delegate more power to decide at L&S HQ level
- Setup technical committee (with professional bodies) to compile/standardise circulars, guidelines, submission requirements etc. and publish online.

Thanks.



Pei Yong, our speaker for our August PAMSC Online lecture has kindly provided us with the link for a series of lectures at an international symposium - please drop in to attend and learn, and share with colleagues, students and friends.

<https://www.eventbrite.co.uk/e/aavs-pedestric-radicals-international-symposium-in-four-parts-tickets-154712420013>

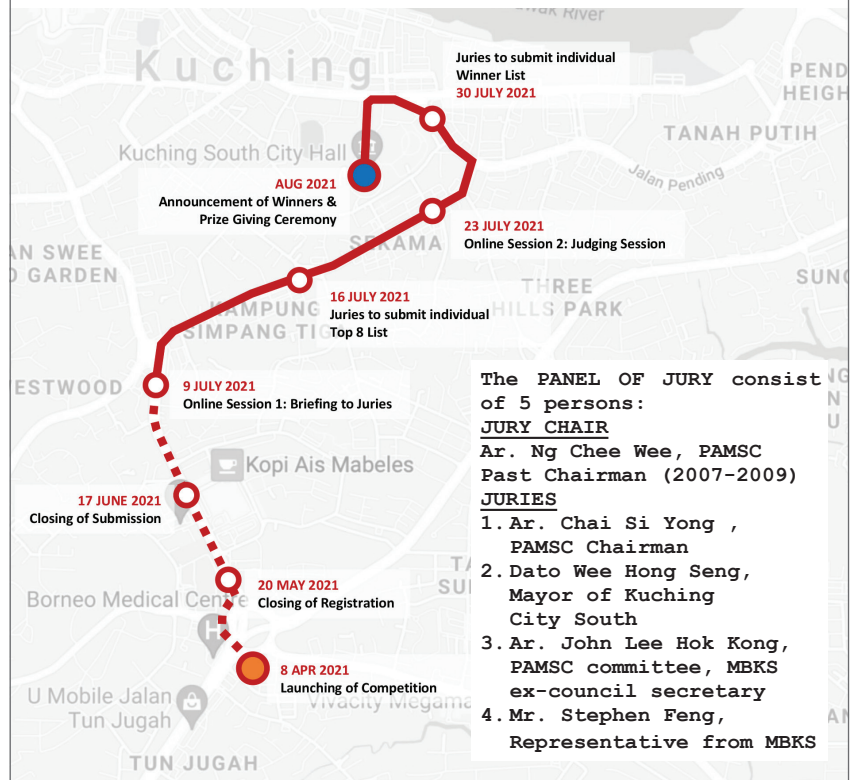


Dialogue session with JLW was attended by Ar. Ng Chee Wee, Ar. Peter Wong, Ar. Michael Wong & Ar. Chai Si Yong from PAMSC Practice & Government Liaison Sub-Committee.

JUDGING FOR PAMSC-MBKS BUS STOP DESIGN COMPETITION 2021

Organised and reported by Tay Tze Yong & Lam Choi Suan

The judging period is schedule from 9th to 30th July. This is a 1-stage judging competition and will be fully conducted online. The judging timelines are as follows:



The PANEL OF JURY consist of 5 persons:
JURY CHAIR
 Ar. Ng Chee Wee, PAMSC Past Chairman (2007-2009)
JURIES
 1. Ar. Chai Si Yong, PAMSC Chairman
 2. Dato Wee Hong Seng, Mayor of Kuching City South
 3. Ar. John Lee Hok Kong, PAMSC committee, MBKS ex-council secretary
 4. Mr. Stephen Feng, Representative from MBKS

SORRY...

Reported by Ar. Chai Si Yong

The PAMSC-HSL-NP Architectural Design Competition's Prize Giving Ceremony scheduled on 3rd July 2021 has been postponed again due to the extension of MCO in Sarawak. Stay tuned to PAM Sarawak Chapter Facebook for the latest update.

While we can't wait to share the result with you, check out the article by our Promoter in their latest newsletter [here](#).

Also, visit langitkch.com for the virtual exhibition of the selected entries.

#langitkch
#pamsarawak

HAPPENINGS

It is always our intention to find the best use of this strategic piece of land. Its easy accessibility to all means we had an opportunity to do a building not just for the eventual building occupants, but also for the public at large. This was a key judging criteria." HSL senior property development general manager, Ho Chik Kee said.

"When the shortlist was unveiled, it really blew us away. Every entry had its strong points. Some were ultra eco-friendly, others were engineering marvels."

"Some entries purposely broke from Sarawak's planning guidelines, which limits buildings to lower heights by showing how building more public spaces at the lower levels should be rewarded with higher maximum heights. Entries like that showed the way forward on how private developments could be more community-centric and be financially feasible."

Toy said HSL-NP would like to build one of the competition winners, although not necessarily the first placed winner.

"It depends on many factors, including sustainability and what the public wants. For instance, one competition entry, which was for an apartment, highlighted how many top schools there are near our site. That really got us thinking about the benefits of inner-city living."

HSL-NP intends to keep up the ideas and multi-based direction for this project. In the meantime, we welcome for interested students by competition winners, further public exchange of ideas, and eventually, more competitions for other design aspects of the building.

"Langitkch is on public display at La Promenade Mall and online."

At the mall, all 5 have their entry boards on full display. After results announcement and prize giving in July, names of the architects would be unveiled to the public. Winners will also record presentation videos, which will be played at the mall.

"Other than the TL, HSL-NP decided to also show six more good entries, that nearly made the cut. These six had ideas we felt deserved to be seen by us," Toy said.

Visit langitkch.com and hsl.com.my, or watch the hosting on social media for updates and info.

LANGIT **200,000 PRIZE MONEY**

Lot 325, Jalan Tabuan

SHORTLIST: The top 11 entries selected from 85 submissions

Langit On Public Display Online And At Mall

A Competition To Find The Best Ideas For A High-Rise In Kuching Yields Amazing Results

THE #Langitkch architecture competition, which is the first organised in Sarawak, received a total of 112 registrations from architects throughout Malaysia.

A jury panel of five, comprising eminent architects from Kuala Lumpur and Kuching, shortlisted 11 nominees for prizes worth RM200,000.

"The entire judging process is totally anonymous – the jury is only shown a code number with each entry. Anonymity is carried through to the final judging. This is to ensure an absolute merit-based competition," said co-jury member Ar. Chai Si Yong, who is Sarawak chair of the Malaysian Architectural Institute.

"In early rounds of selection, jury members did not even know each other's shortlist. It was not until after the final shortlist and jury members meet to deliberate. Not surprisingly, the winners' list could not be confirmed easily. It took several rounds of meetings before a final list was accepted."

#Langitkch is an ideas competition to find the best high-rise for a 15-storey plot of land in Kuching's central business district along Jalan Tabuan.

Entries ranged from two-storey retail showrooms to 39-storey world-class condominiums and even an 8-sports arena.

The landowner and developer Hoek Seng Lee, in a collaboration with HSL (HSL-NP), co-announced the project Langit, because 'langit' in Bahasa Sarawak means 'sky', while 'langit' is the sky in Malay. The competition tagline is "We're Reaching For Greater Heights Together."

ALSO GREAT: Six more entries that nearly made the cut. These six were HSL-NP favourites. They are also on display at the mall and website.

5 Recognized Juries

Dr. Ar. Ezzam Hassan
Partner, Aedas Malaysia

Ar. Amy Jony
Principal, Aedas Malaysia

Ar. Liem Tay
Senior Lecturer, UPM

Ar. Mimi Bock
Architect, JPA Architect

Yip Jui
Director, PAM Sarawak

WE ARE MOVING...

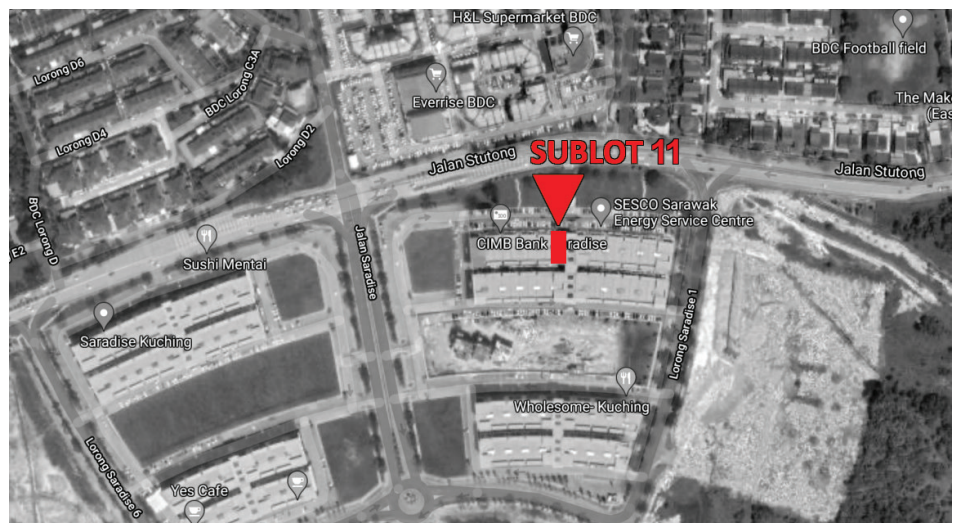
Reported by Ar. Chai Si Yong

In June, Pusat Binaan Sdn Bhd (PBSB) bought a 3-storey commercial shop at Saradise Kuching. This corner-lot unit is located at Sublot 11, Block A1, Lorong Saradise 1, facing Jalan Stutong.

PAMSC will be moving to Level 2 (top floor) in 2022. The tenancy agreement with PBSB on the new centre is underway. The call for interest to design our new centre was announced in June. PAMSC new Premises task force has selected IDC Architects Sdn Bhd after interviews of the shortlisted firms last week.

Congratulations IDC Architects Sdn Bhd. We look forward to your design for our new home!

Stay tuned for updates!



Introducing Ar. Awang Hasim Bin Awang Sulong - our new Co-Chair for Graduate, Education & BIM Subcommittee 2021-2022

In an attempt to introduce our hardworking PAMSC committee members, - we will be conducting a series of interviews with them and sharing them with our readers over the next few issues.

I: Where did you go to high school?

A: St. Thomas Secondary School, Kuching.

I: Tell us a little about your university experience.

A: I obtained my Diploma at UiTM, Shah Alam and B. Arch at University of Humberside, Hull in the UK.

Travelling is an advantage when you are studying Architecture in Europe, the only problem is money, but it never stopped me from travelling to places of my architectural interest. Doing part time jobs at that time helps to fund my trips.

I: What kind of projects are you working on now?

A: An upgrading project of a National Park, a cafeteria, an office complex, a recreational/ tourism facilities, a school, an upgrading of a vocational facilities and a couple of Masjids among others.

I: What kind of projects do you enjoy working on?

A: As an architect, we try to make each particular project interesting by trying to bring some fresh ideas. Satisfaction comes when the client or the end-user are happy and appreciate our ideas.

I: Do you think that you have a good work-life balance?

A: Yes I do. An architect has to know how to manage it well although we may find it difficult sometimes due to constant deadlines. Family is equally important in life. We must be able to balance it well as time is precious as we grow older.

I: What do you do outside of work?

A: Whenever I have the opportunity, I like to go for outdoor activities such as hiking and travelling. At home I like to watch TV and do a bit of gardening. I have some interesting water plants and indoor plants as well, such as *monstera* and *snake plants*, a new trend nowadays among plants enthusiast during MCO.



I: What kind of magazines do you read?

A: Apart from the limited physical magazines in circulation like MA and D+A, mostly digital media nowadays like architectural website such as ArchDaily. Whatever you want, just ask Mr. Google.

I: Do you have pets?

A: We have 3 cats at home. There are my wife's cats. Kids mostly don't play with animals nowadays, they play with gadgets.

I: Who does the cooking at home?

A: Most of the time my aunt, sister and wife do the cooking at home. I only cook occasionally if it is necessary.

I: Do you do the interior design for your projects?

A: Yes we do for some of our projects. Our most recent one is the Interior design and renovation of tourism facilities for a state government agency.

I: How big is your office/studio/company?

A: Arkitek HIF Sdn Bhd is a medium size practice, 2 directors with 12 office staff. I am also lecturing at UNIMAS, my current studio has 43 students.

I: Are you happy with the standard of our fresh graduates?

A: As far the fresh graduates are concerned, I would say I am fairly satisfied as the rest are all depending on their own individual initiative to learn and to explore. Fresh graduates should be able to express their ideas well but sometimes they are afraid to express them well due to lack of confidence not because they are not capable to do so.

I: Why did you join PAM?

A: I think, by joining PAM, I can gain a lot through sharing knowledge and resources among members, whether I am in the industry or an academicians.

END



Entrance of a National Park.



A small surau.

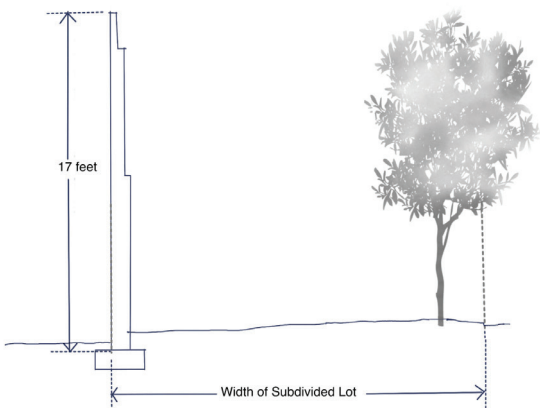


A Masjid in Batu Kawa.

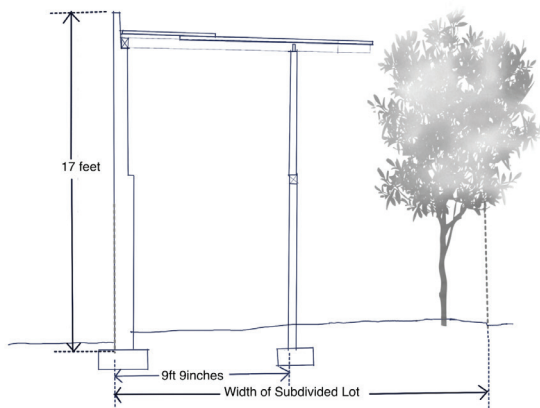


A recreational project near Samarahan.

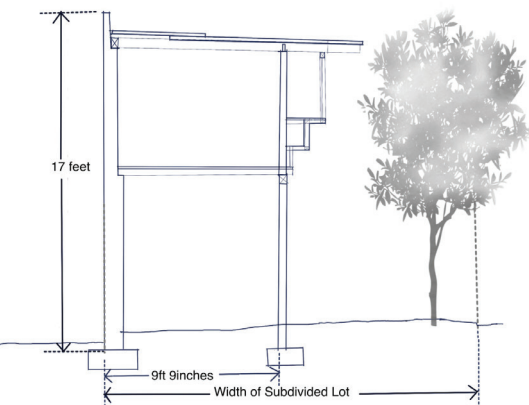
62 CAMDEN MEWS



1. The party wall - this is new, it is 17 feet high and thickens twice from 9 inches at the top to 13 inches and to 18 inches to provide an upper ledge for the future roof joists and a lower one for the floor joists.



2. A row of concrete columns - with a single concrete beam and located 9 feet and 9 inches from the party to frame the south face of the house. In a do-it-yourself house, it is good to have the roof on early to protect materials and the building below for most of the week when no one is there.



3. A beam is added at the top - to support the roof joists which are similarly fixed to the upper ledge of the party wall. The joists extend beyond the wall line, and over the columns the joists are paired with two columns. From these columns hang a continuous row of cabinets as well as a row of uninterrupted sliding windows.

I recently read an article about an architect who built his own house, on the weekends with his wife and friends over a period of three years. This is not an unusual event these days, but this was in 1962. The house challenged many of the planning and design conventions at the time; it was a manifesto of ideas ahead of its time - about ecology, sustainability and social responsiveness. Ideas which he would continue to develop in his later projects. I was so taken by his sensitivity and practicality, the richness of his drawings and the fact that he built it with his own hands - that I took it upon myself to re-trace some of his drawings.

Though the house was resisted initially, the same authorities now place it in their Heritage listings (Grade II). The family continues to live there; the Cullinans.

This is an extract from architectsjournal.co.uk - a lovely article from November 2015 about influential housing plans, by Teresa Borsuk (She is senior partner at the architectural firm Pollard Thomas Edwards, and was named Woman Architect of the Year by Architects' Journal in 2015)

House Plan: Teresa Borsuk on Cullinan's 62 Camden Mews

6th NOVEMBER 2015 BY TERESA BORSUK

In the latest in the AJ's ongoing series looking at influential housing plans, Teresa Borsuk chooses Edward Cullinan's Camden Mews in London.

As a student, I lived across the road from 62 Camden Mews and I heard Ted Cullinan give a talk about his house.

Ted showed a few slides and I was immediately taken by the strong link between the drawings and the essence of the home. Of course one should expect that. But it is not just what was drawn but also what is evoked. The style and content of the drawings are carefully aligned with the process and product. They are at one. In the latest in the AJ's ongoing series looking at influential housing plans, Teresa Borsuk chooses Edward Cullinan's Camden Mews in London.

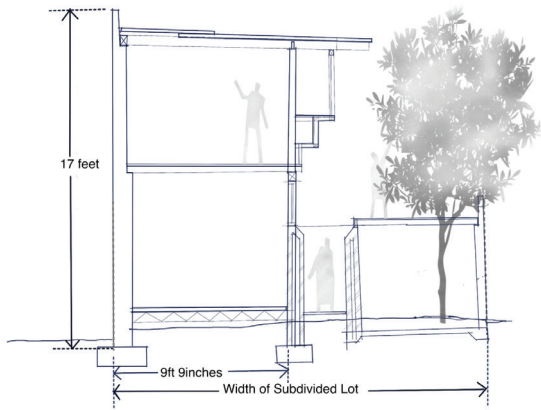
The drawings are simple, clear and controlled

The house is efficient and logical. The drawings are simple, clear and controlled. They exude thoughtfulness, economy and charm. They have an enchanting quality. There are considered references to human occupation. Both plans and sections demonstrate the enormous value of space and its very careful and effective use. The party wall diminishes in thickness as it rises; the upper floor projects over the lower one and the rooms have been developed around modules of furniture. I remember Ted saying that the width of the house was determined by the length of a bed - or the equivalent of three kitchen units, a wall and a passage.

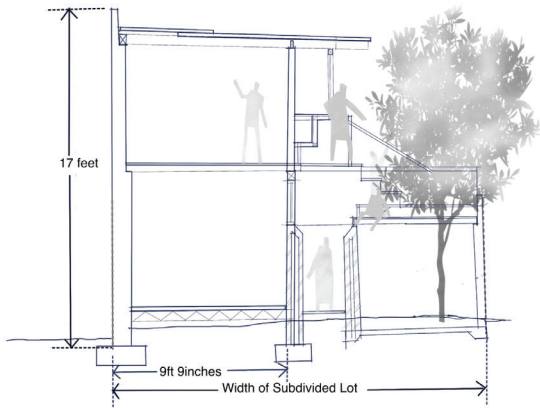
What is drawn also depicts the actual process of the self-build. (The house was built by the Cullinans over two years of weekends.)

Was this the first house in Camden Mews not to straddle its plot? The house counter-intuitively takes up half the site frontage and extends from front to back - this copes with two existing trees and allows for a long south-west facing elevation opening on to a first floor terrace, optimising aspect, outlook and amenity. The sections joyfully express this.

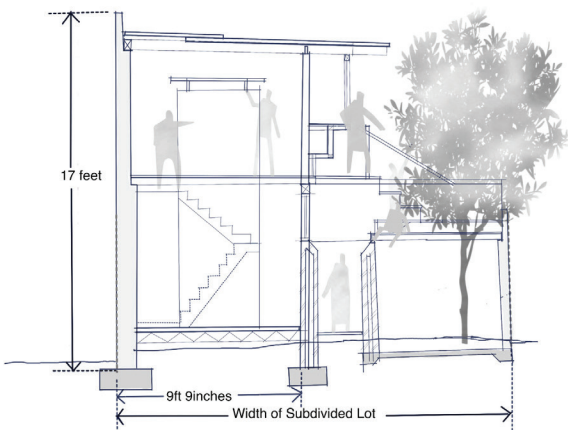
The house is now over 50 years old, it is grade II*-listed and still occupied by the Cullinans. The drawings continue to delight. Magical.



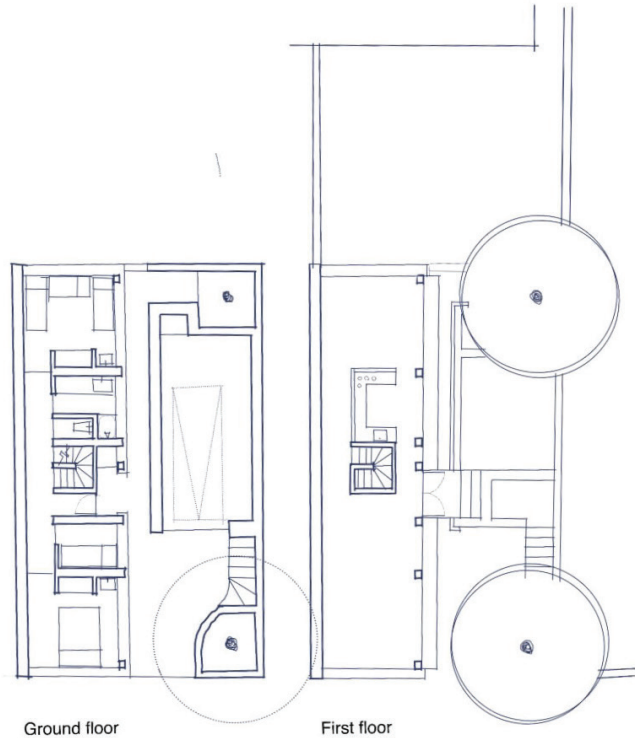
4. The first floor joists are supported across the concrete beam and a strip of window occupies the gap between floor and hung cabinets to extend the floor plane. Below, a 6 feet high brick wall encloses bedrooms, while leaving a view of the sky and trees.



5. Half way down the site, this brick wall is mirrored by the wall to the garage and workshop, the roof of which is a entry terrace to the first floor gallery.



6. From the ground floor, the entry to the house is through the 'crack' in between the two brick walls. A tiny staircase brings one to the middle of the first floor gallery.



Floor plans

A. The site is 25 feet wide and 46 feet long, there are two existing trees and a boundary wall. Instead of straddling the site, the plan turns the house to face south and in doing so achieves passive solar gain.

B. This house turns conventional planning on its head; placing small bedrooms in a solid brick base with the light filled timber constructed gallery as its upper floor.

END PIECE

About Edward 'Ted' Cullinan (1931-2019)

An architect who was an early proponent of sustainability and social awareness, as well as a master of ingenious design. A modernist by training and inclination, he was also intensely serious about architecture's wider social and environmental responsibilities and how they shaped the processes of design and relationships with users. He was also a generous and respected teacher of architecture. His commitment to these principles throughout five decades in practice was recognised with the award of the RIBA royal gold medal in 2008. He was also made a CBE in 1987, a Royal Academician in 1989 and a Royal Designer for Industry in 2010. Described as a "practising architect", he remarked drily: "I cherish that word. I'm always practising. And one day might even get there."



Extracted from

1. <https://www.architectsjournal.co.uk/buildings/house-plan-teresa-borsuk-on-cullinans-62-camden-mews>
2. <https://www.theguardian.com/artanddesign/2019/dec/06/ted-cullinan-obituary>
3. <https://www.architectsjournal.co.uk/news/obituary-ted-cullinan-1931-2019>
4. <https://www.cullinanstudio.com/project-62-camden-mews>
5. Architecture in the Age of Scepticism - a practitioners' anthology compiled by Sir Denys Lasdun.



An interplay of timber and glass hung beyond the building enclosure, extends the width of the interior space.



The first floor is entered by the roof terrace over the garage.



A letter box let into the brick base allows the Sunday paper to be dropped directly into the adults' bedroom.



A strip of window occupies the gap between floor and hung cabinets to extend the floor plane.



The joists extend beyond the wall line, and are paired with two columns, from which columns hang a continuous row of cabinets as well as a band of windows.

Cullinan Timeline

- 1951 Aged 20, Cullinan attends the University of Cambridge, before studying at the AA and University of California, Berkeley
- 1958 Works for Denys Lasdun on the University of East Anglia student residences and Fitzwilliam College in Cambridge. Sets up own practice a year later; it becomes a co-operative in 1965
- 1965 After completing the Marvin House in California for friends and the Horder House in Hampshire for his uncle Mervyn, he builds his own house at Camden Mews, London. It is Grade II*-listed in 2007
- 1966-1969 Completes Garrett House, Eltham, London; House on the South Downs, Minster Lovell Mill Conference and Study Centre, Oxfordshire; and Maltings Chase, Suffolk. They are all later Grade II-listed
- 1972 Designs new branches for Olivetti in Belfast, Carlisle, Derby and Dundee
- 1984 Completes Uplands Conference Centre for Nationwide, in High Wycombe, Buckinghamshire. It is Grade II-listed in 2014
- 1990 Completes the Ready Mix Concrete International (now RMC Group) Headquarters. It is Grade II*-listed in 2014
- 1992 Builds the Fountains Abbey Visitor Centre, Ripon, North Yorkshire
- 1999 Builds University of East London Docklands Campus (pictured)
- 2002 Downland Gridshell, Weald and Downland Living Museum, West Sussex completes. It is shortlisted for the RIBA Stirling Prize
- 2008 The RIBA awards Cullinan its Royal Gold Medal
- 2013 Maggie's Cancer Care Centre Newcastle opens

PARTNERS



Seng Lee Glass Sdn. Bhd.
成利玻璃有限公司

GL BALNIAGA
A Brand You Can Trust