



PAM
Pertubuhan Akitik
Malaysia
Sarawak Chapter

i

L E G A C Y

1933 叁 III
1933 SHANGHAI
石 山 之 志

1/2015-2016 July





After serving PAM Sarawak Chapter for 18 years, it is a privilege to be the Chairman for the 2015-2016 term. It is most encouraging to see 12 executive committee members so ably supported by 12 sub-committee members; among whom 5 past-chairmen and several new faces. This term, a total of six sub-committees have been formed.

The Secretariat and IT sub-committee will provide strong emphasis to restructuring the secretariat, and to establish an administrative system that will simplify the process for successors. Crucially, the Events and CPD sub-committee will endeavour to maintain PAMSC's reputation as the most active chapter in Malaysia.

The Education and Graduate sub-committee will focus on providing support to members in their Part 3 exams, with the ultimate goal of improving passing rates. This sub-committee is assisted by the Media and Publication sub-committee in organising design workshops for students. In addition to participating in the government's policy-making, the Practice sub-committee will also push for a more effective and fair system for architectural practice in Sarawak. Finally, the Sustainable Design and Heritage sub-committee will collaborate with other like-minded NGOs in raising public awareness of conservation and environmental issues.

Ultimately, this term's committee wishes to raise the status of Sarawak's architect and PAM Sarawak Chapter. We would like to extend our gratitude to the members and committee members for their support, and we look forward to working closely with PAM Council in strategising ways to face the challenges posed by globalisation and the liberalisation of the architectural profession.

Mike Boon
PAMSC Chairman 2015-16

Legacy - I recently told a group of students that architecture is one of the few professions that enables its practitioners to leave behind a physical legacy; a tangible body of work that survives and hopefully benefit future generations.

In this issue, we explore this aspect of our profession and visit with local practice; Jurubina Unireka (JUR) who has left their imprint on our architectural map. Over the past decade, JUR has planned a significant number of townships and strategic development areas with the aim of moulding the geography of an area to define the memory of 'place' for future generations.

They believe that architects can significantly contribute to the socio-economic development of the State through thoughtfully designed buildings and spaces. We will also review our findings from our study trip to Hangzhou-Ningbo-Shanghai, and see how successful these cities have been in preserving their architectural and cultural legacies, and the influence this has on the works of exponents such as Wangshu, Chen Haoru and others.

There is of course, another form of legacy; an intangible one, of architectural knowledge and experience transmitted through classrooms and studios or informal situations such as workshops or study trips. I saw first hand the transmission of "wisdom" from the seasoned practitioners to young architects during our China study trip. Simon Woon, Phillip Chang and Chee Wee variously highlighted interesting building elements, told stories of important cultural events and taught life lessons at the back of the bus, during lunch and while strolling along the banks of "西湖" West Lake. Architects who are passionate about their work are often the best teachers.

The Education Sub-committee with our help has planned two design workshops with the local colleges and university; aimed at fostering the student-mentor relationship that is so important in architectural education. Check out our Events Calendar for details.

We have always been on the lookout for new blood for INTERSECTION; people with energy and ideas. This issue benefits tremendously from the input of two such persons; Ar. Leong Pik Shia contributed the feature on Jurubina Unireka and re-enlisted many of our advertisers, while Nora Khalid starts her first part of four installment of BIM. We thank them and our readers for the continuous support.

Min
With invaluable help from
SiYong, Pik Shia, Hui Joo and Ivy

(Cover page) 1933 Shanghai

This concrete slaughter house was designed originally by British architects, Balfours and built in 1933. Built around a central atrium, which served as the abattoir's workshops, each floor is connected to an outer shell by a series of interlocking ramps, bridges, and spiral staircases which were designed to control the flow of both people and cattle. The building underwent extensive restoration in 2008, into a commercial, art and recreation hub.

* Image Courtesy of Ar. Chai Si Yong

PAMSC EXECUTIVE COMMITTEE & SUB-COMMITTEES 2015 - 2016

Chairman
Ar. Mike Boon Chee Khian

Deputy Chairman
Ar. Bong Joon Hin

Vice Chairman
Ar. Kho Meng K'ang

Hon Secretary
Ar. Tan Kiat Soon

Hon Treasurer
Ar. John Lee Hok Kong

Past Chairman (by appointment)
Ar. Philip Chang
Ar. Hubert Kueh
Ar. Ng Chee Wee

Immediate Past Chairman
Ar. Stephen Liew Ngian Chin

Committee Members
Ar. Andy Ngu Tai Kong
Ar. Chai Si Yong
Ar. Leong Pik Shia
Ar. Stephen Mong
Ar. Tay Buang Chuan
Ar. Wee Hii Min

Co-Opt Sub-Committee Members (by appointment)
Ar. Bong Kuet Leng
Ar. Desmond Kuek
Ar. Ivy Jong
Ar. Felix Wee
Mr. Kevin Phua
Ar. Noraini binti Narodden
Ms. Nora Khalid
Ms. Peggy Wong
Ar. Peter Wong

Sub-Committee	Chairman	Sub-Committee Members
IT & Secretariat	Ar. Chai Si Yong (IT) Ar. Tan Kiat Soon (Secretariat)	Ar. Stephen Mong (Records / Filing System) Ar. Peter Wong (Management / Procedures) Ar. Ivy Jong (HR / Job Descriptions)
Practice & Government Liaison	Ar. Bong Joon Hin	Ar. Phillip Chang (Practice) Ar. Bong Kuet Leng (Practice) Ar. Stephen Liew (Planning) Ar. Hubert Kueh (Planning) Ar. John Lee (Council / BOMBA) Ar. Chai si Yong (Council / BOMBA) Ar. Tan Kiat Soon (Housing) Ar. Ivy Jong (Housing)
Events & CPD	Ar. Chai Si Yong	Ar. Wee Hii Min Ar. Desmond Kuek Ar. Leong Pik Shia Mr. Kevin Phua
Publication & Media	Ar. Wee Hii Min	Ar. Chai Si Yong Ar. Leong Pik Shia
Education & Graduate	Ar. Kho Meng K'ang	Ar. Andy Ngu Tai Kong Ar. Felix Wee Ar. Noraini binti Narodden Ms. Nora Khalid
Heritage & Sustainable Design	Ar. Mike Boon	Ar. Ng Chee Wee (Sustainable Design) Ar. Tay Buang Chuan (Heritage) Ms. Peggy Wong

PRACTICE PROFILE: JURUBINA UNIREKA

Background

Jurubina Unireka (JUR) was officially established in June 1991 by Chai Long Sen, Donald Moa Mee Muk and the late Chan Say Bin, with the partnership expanded to include Law Hui Ho, Chee Seng Kui and Leong Pik Shia in the early 2010's. They presently have a staff strength of about 50 people and provide a diverse range of consultancy services that includes architecture, urban & regional planning, interior design and project management amongst others with projects from the public and private sectors in Sarawak, Sabah and West Malaysia. They believe that a balanced mix of projects from each sector is important in maintaining the vitality of the firm, as each sector entails different dynamics and challenges.

Philosophy

Since its inception, JUR has been practising a collaborative approach to projects with strong design and management leadership from the partners, coupled with the creative energy from the design team. At the initial stage of a project, JUR believes in taking the lead in developing the brief and setting a clear project direction so that planning and design can be integrated with effective project delivery at all stages.

JUR also believes that architects are able to significantly contribute to the socio-economic development of our State, through thoughtfully designed buildings and civic spaces. They try to achieve this through their core competence areas as follows:

Green Building Design

JUR has qualified GBI facilitators in both Chai Long Sen and Donald Moa. To date, JUR has designed and delivered the first GBI-certified building in Sarawak, i.e. SEB Office Tower (Silver Certificate).

Complex Buildings and Specialised Institutes

JUR has a comprehensive portfolio in the design of complex buildings: urban malls, hotels, corporate towers, multi-storey mixed-use buildings, medical and healthcare facilities, educational and specialised academic training institutes – some of which are featured in this article.

Specialised Industrial Buildings

JUR is involved in the State's embarkation into a wave of industrialisation through SCORE in designing the Aluminium and Manganese Smelting Plants in Mukah and Samalaju, Bintulu, often working in collaboration with relevant foreign manufacturing technology specialists.

Township and Masterplanning

JUR is also actively involved in township and development master planning in view of its strategic effects on both the long term structural growth of development areas and the resultant quality of socio-physical environment. JUR is strongly convinced that master planning is powerful in moulding the geography of an area or region, and redefine the memory of 'place' of the next generations.

Over the past decade, JUR has masterplanned a significant number of townships and strategic development areas which are in various stages of implementation, such as the Miri Marina Park Resort City, Bintulu Waterfront - Parkcity Development and Bintulu Town Square, Kuching Moneta de Borneo, Matang Metrocity CBD, among others. There are several others in the pipeline, for instance, the Kuching Darul Hana Layout Master Plan (In association with COX Architecture) and Kuching New Waterfront Extension Master Plan (In association with Artemas Architect).

50
YEARS

OF BUILDING
ASIAN ICONS



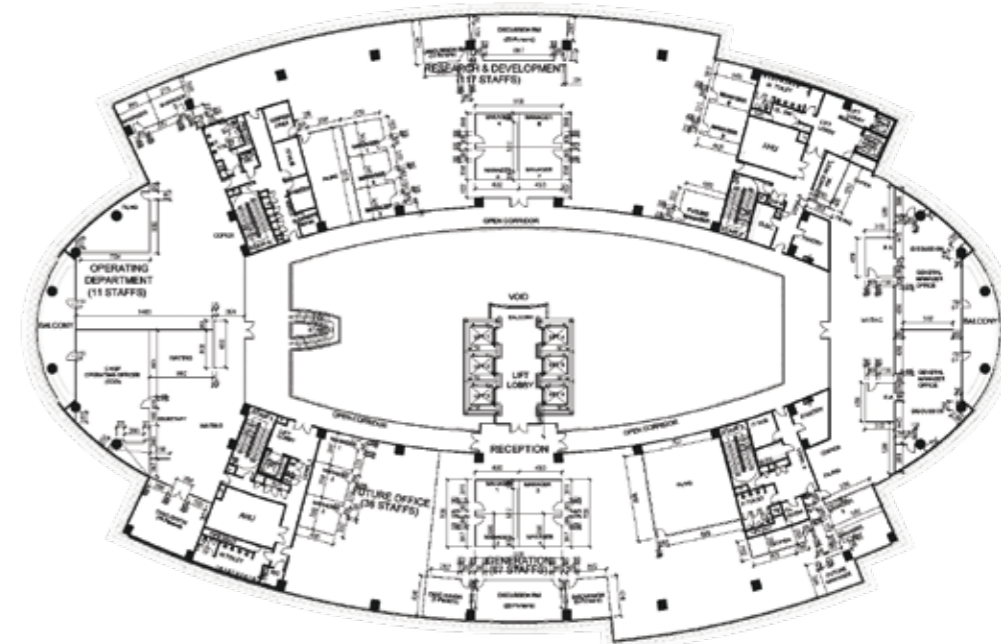
Glazed Entrance Porch.

Atrium space with glass roof allowing natural day light to come through. The space is further enhanced by plants and water feature.

Sarawak Energy Berhad Headquarters

is part of the State's Isthmus CBD Plan. The 9-storey low-energy building which was completed in 2012 contains numerous sustainable design strategies such as a predominant north-south orientation with a central atrium that is a conduit for day lighting and natural convective air flow. It employs other green technology such as double glazed low emissivity glass for the facade, external light shelves for the permeation of natural light into internal spaces, rainwater harvesting and photovoltaic cells to generate power.

In 2013, it was awarded a GBI (Green Building Index) Silver Rating for buildings under the Non-Residential New Construction category; making it the first green building in East Malaysia.



www.lysaght.com.my

NS BLUESCOPE LYSAGHT MALAYSIA SDN BHD
NO. 6, PUSKASARI PERMULIA, SEKODEN 11,
40000 SHAH ALAM,
SELANGOR DARUL TAJIM, MALAYSIA
TEL: 603-5093 6000
FAX: 603-5093 6001

NORTHERN
1-2-0, KOTA DAMAI, POINT COMFORT, PANG
JALAN TUN DR. AWANG, LEBIH BUKIT, KOTA B
11800 BANGSA MELAKA PERANG, MALAYSIA
TEL: 607-536 7000 / 6002
FAX: 607-536 7001

SOUTHERN
230, JALAN MELUR 11,
KAWASAN PERKUSUSTHAN AIRERA,
81400 BANGS, KECOH, MALAYSIA
TEL: 607-536 7000
FAX: 607-536 7001

NS BLUESCOPE LYSAGHT SABAH SDN BHD
LOKONG KUBA, OFF. JALAN KOLONGKONG,
88400 KOTA KUBA, SARAWAK,
SABAH, MALAYSIA
TEL: 6088-442 131
FAX: 6088-421 131

NS BLUESCOPE LYSAGHT
(SARAWAK) SDN BHD
KUALANG BERANGA 4,
LOT 810, SECTOR 06,
PERINDUSTRIAL AREA,
JALAN FEDERAL BERANGA KUCHING
SARAWAK, MALAYSIA
TEL: 6082-323 821
FAX: 6082-323 418

BINTULU BRANCH
LOT 874, BLOCK 26-K13,
KUALANG LIGHT INDUSTRIAL ESTATE,
07000 SINTIA U SARAWAK, MALAYSIA
TEL: 6082-291 236
FAX: 6082-292 881





Potline building.

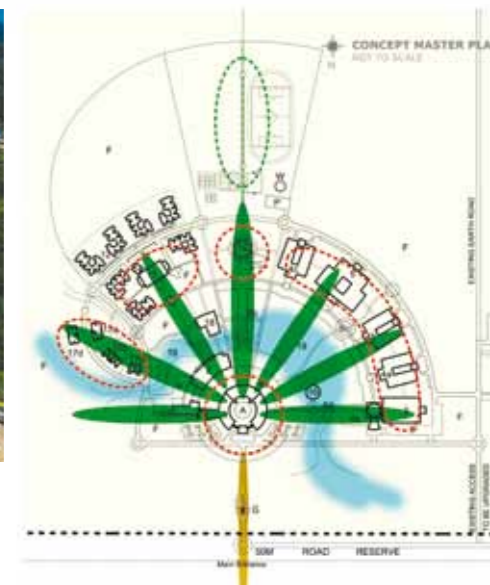
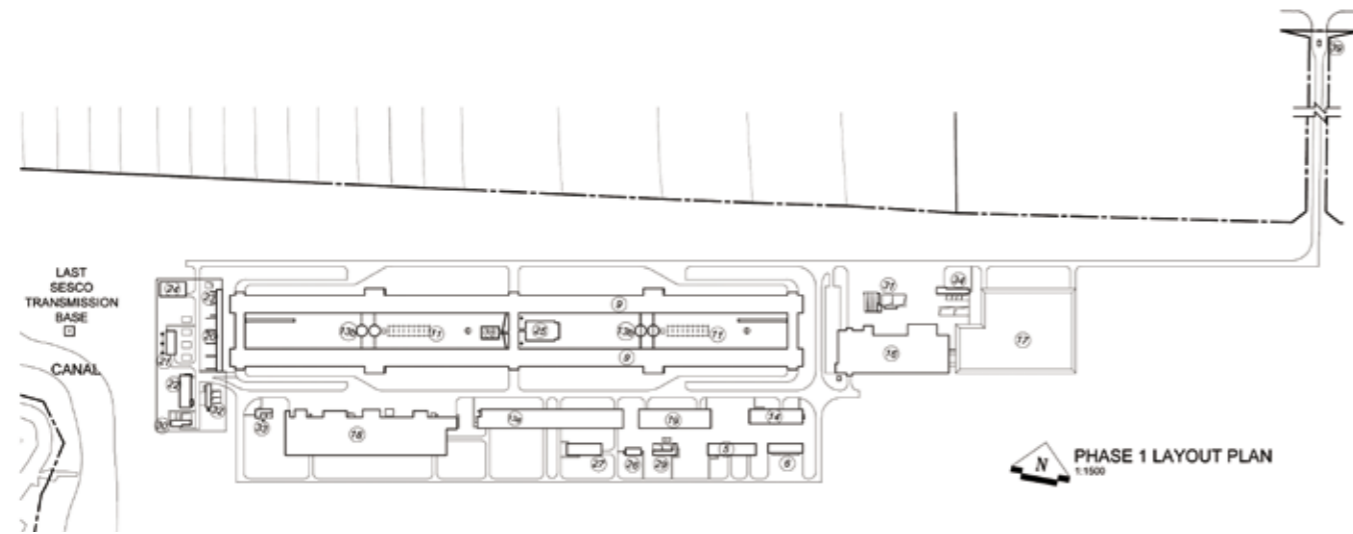
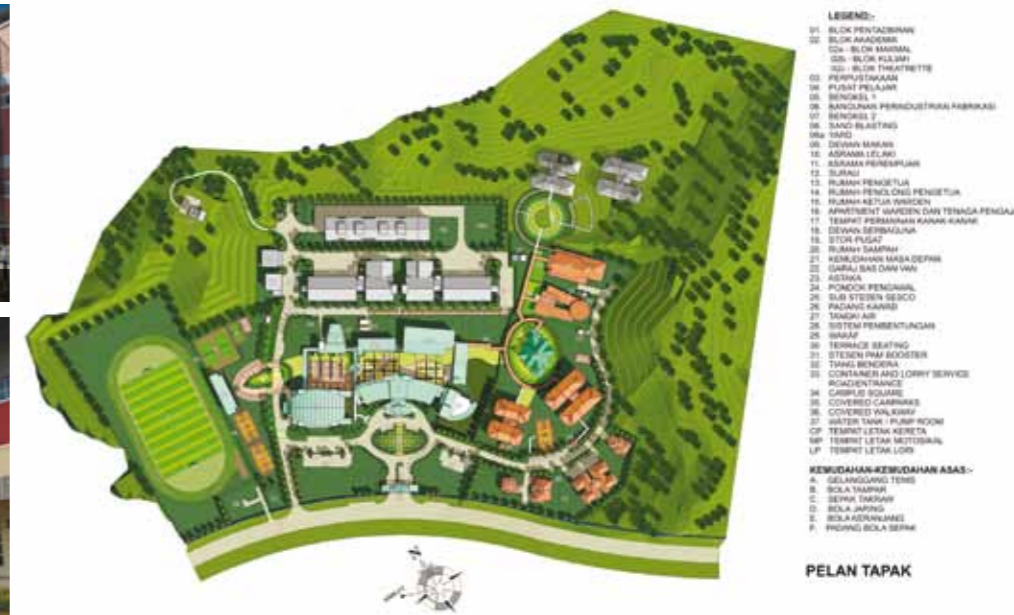
The Mukah Smelting Plant was an interesting project that balances two contrasting components, namely manufacturing and the environment which was achieved by an optimal physical plan enabling efficient flow of materials, goods and people coupled with the creation of a conducive working environment.



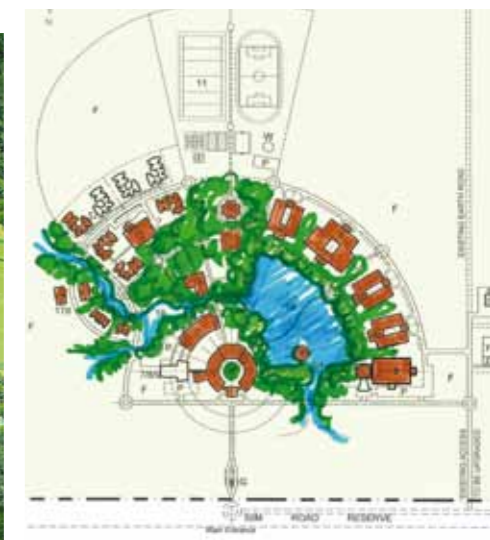
Institut Kemahiran Mara (IKM) Bintulu is the flagship project of a new satellite township which uses the sequence of nodal buildings to punctuate the connecting green spaces while the use of colour and solid-void compositions aims to instill a sense of institution and stature in the overall plan.



View towards Administrative block.



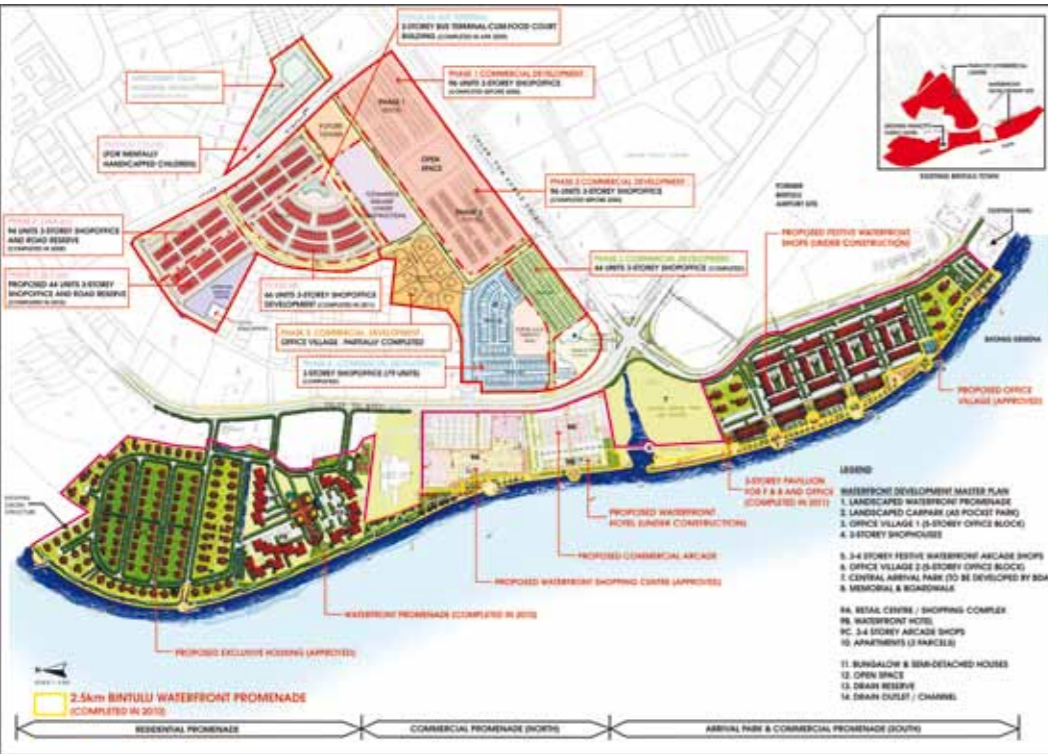
The UiTM Mukah Campus uses the leaf form as a metaphor for its design and planning, in response to the client's request for an environmentally friendly "green campus". In addition, this is used to symbolize the 'growth of knowledge' and as an analogy to campus planning; in particular with reference to the landscaped 'clustering' that allows for organic growth and flexibility for the future expansion of the campus. The project is targeted to be completed later this year.



Wisma Sanyan is the landmark of Sibu, with padang as its forecourt and the Rejang as its panorama.



Bintulu Waterfront – Parkcity Development Master Plan involves the partial reclamation of sea and riverfront to create a 2.5km waterfront promenade on approximately 220 -acres land. It contains commercial, recreational, community and hospitality facilities in a quest to re-brand Bintulu as a “Healthy Industrial City”.



The leisure waterfront promenade, a peaceful and scenic place with modern landscape design incorporated.

DML Products (Borneo) Sdn. Bhd.

Manufacturer of Metal Ceiling and Louvers



The Team

As in many modern practices nowadays, JUR understands the importance and value of a collaborative working environment with a strong office culture. I am very fortunate to be part of this culture which encourages close interaction among staff at all levels and regularly organises and facilitates activities and events to promote this sense of belonging. The photos featured shows in a small way the bond that we share.



Office trip to Sematan.



Office trip to Chiang Mai and Chiang Rai.



25th Anniversary Dinner - cake cutting ceremony.



Staff and families.



Hurricane Ride to Damai.



Rat Race Born to Run, Forced to Work.



Movie Night.



DML PRODUCTS (BORNEO) SDN BHD (742099-D)
 (Manufacturer of Metal Ceiling and Louvers)
 138 Block 15, MTLD, Jln Kuching Ranger Depot, Sg Tapang off BT 7, 93250 Kuching, Sarawak. Email: service@dml.com.my Website: www.dml.com.my
 Tel (Office): 082-613099 Mobile: +6016-8890192 (Vivian Thian) / +6016-8890172 (Paddy Wong) Fax: 082-613105

Travelogue : Study Tour to Hangzhou - Wuzhen - Shaoxing - Ningbo - Shanghai



Westlake.

HANGZHOU is known as one of the most beautiful cities in China, renowned for its historic relics and natural beauty amongst which is the West Lake, a UNESCO World Heritage Site. A notable variety of green tea, Longjing comes from Hangzhou.

Baochu Pagoda (保俶塔) is one of the landmarks of the West Lake; seven storeys high with a distinctively slender and elegant appearance. We had to walk up many steps to get to the base of the pagoda, but we were able to enjoy the cool greens of the bamboo forest and catch aerial glimpses of the West Lake.

Hu Xueyan's Residence (1823-1885), was home to one of the richest and most famous businessmen in Qing Dynasty. The construction of his residence began in 1872 and is a complex of more than 20 buildings, with many pavilions, terraces, bridges, verandas, rockeries, all ingeniously designed.

In the midst of the city, a sanctuary of calm for reflection.



Chee Wee and Irene re-enacts a scene from Liu San Chieh (刘三姐).



Academy of Fine Arts by Wangshu.



Chen Haoru, (next to Chee Wee) guided us through Wangshu's University.



Squid hunting at Hefang Jie, Hangzhou.



Impressions of Westlake; directed by Zhang Yimou with music from Kitano.



Grand Canal Old Town.



Wuzhen is known as the 'Venice of the East'.



Our accommodation for this trip were luxurious and the meals more than sumptuous - causing many of us to wake up early for a spot of exercise before breakfast.

SHANGHAI needs no introduction; suffice to say that is popularly seen as the birthplace of everything considered modern in China. It was also the intellectual battleground between socialist writers who concentrated on critical realism, pioneered by Lu Xun, Mao Dun amongst others.



Planking at Shanghai.



Waterhouse by Neri&Hu.



Ningbo Tian Yi Ge.



Ningbo Museum of Contemporary Arts by Wangshu.

NINGBO is one of the oldest cities in China, dating back to 4800 B.C. Though its CBD was densely built, it had a good balance of green spaces and parks (and blue skies while we were there). Prominent persons from Ningbo include Chang Kai-Shek and Yo-Yo Ma.



Boat ride in East Lake, Shaoxing.



Shanghai Museum of Natural Science.

Long Museum at West Bund is located at the bank of Huangpu River, Shanghai on a site which was used as the wharf for coal transportation. The design of the new museum by Atelier Deshaus adopts a cantilever structure featuring an umbrella vault which visually echoes a remaining coal hopper unloading bridge - a symbol of the area's industrial past.

Waterhouse at South Bund was a 1930s Japanese Army headquarters converted into a successful 19-room boutique hotel and restaurant. The architectural concept rests on a clear contrast of what is old and new. The original concrete building has been restored while new additions built over the existing structure were made using Cor-Ten steel, reflecting the area's industrial past.



Long Museum at West Bund.

Tian Yi Ge (天一阁; "One Sky Pavilion"), is the oldest existing library in China. Founded in 1561 by Fan Qin during the Ming Dynasty, in its heyday, it boasted a collection of 70,000 volumes of antique books. Over time, the collection dwindled due to theft and pillaging from the British, these have been recovered through government effort and private donations to 30,000 volumes.



Ningbo Museum Of Contemporary Art - ball-pen sketch washed with Chinese ink and soya sauce.



Min introduces himself to Renzo at the "Piece by Piece" Exhibition at the Shanghai's Power Station.

PAMSC would like to thank Ar. Ng Chee Wee for his tireless efforts in organising our study trips. Next year - Eastern Europe !

HANGZHOU FOOD

Our trip to Hangzhou, Ningbo and Shanghai was full of culinary surprises. Firstly - after a long morning of wild goose chases (those on the trip would know what I'm talking about) we were really famished. Finding the lunch venue already exhausted quite a few of the brave sojourners - as before getting to the restaurant we had to take a detour to a few dead-ends, including a temple - thanks to a guide who did not have a clue what he was doing.



Lou Wai Lou.



Drunken Chicken at Lou Wai Lou.



Lung Ching Shrimps at Lou Wai Lou.



West Lake Fish at Lou Wai Lou.



Tung Po Pork at Lou Wai Lou.

Our first day lunch was at a famous Hangzhou restaurant - Lou Wai Lou at West Lake. As it was already very late afternoon - most of the restaurants were closed. Thankfully this one agreed to remain open for our group. We had some of the Hangzhou staples such as drunken chicken, Tung Po Pork, Lung Ching Shrimps and West Lake Fish in Vinegar Gravy. Though the restaurant is famous - the food is really nothing special. The stand out was the Lung Ching Shrimps which had a really springy texture and a unique slightly bitter taste from the Lung Ching tea leaves, and the West Lake Fish which has a very delicate flesh, and a nice subtle fragrance from the sweet vinegar sauce.



Yun Shui Yao.



Interior of Yun Shui Yao.



Mala Chicken at Yun Shui Yao.

For dinner we went to Yun Shui Yao - a popular restaurant in the canal District of Hangzhou which only the locals would know about. The restaurant is housed in a number of traditional wooden houses along a canal - very rustic and romantic. The food is Yunnan style - slightly spicy. The stand out dishes were the Lamb with Onions - which was served on a small grill on the table, and the Fish Stew - which was thickened with milk and very flavourful. In fact all the dishes at this restaurant were very good and well worth repeat visits.



Pickled Cucumbers at Yun Shui Yao.



Lamb with Onions at Yun Shui Yao.



Fish Soup at Yun Shui Yao.

On the second day we went to Wuzhen - a water village between Hangzhou and Suzhou. This two-thousand year old water town is really scenic and full of fascinating history. There are also lots of great food to be had here - including the ubiquitous Tung Po Pork. Lots of people were walking down the street with a stewed duck drumstick in their hand - and it was very good. Another nice find was the flat bread with preserved vegetables made in something like a Tandoori oven. Very addictive.



WuZhen.



WuZhen Flat Bread with Preserved Veggies.



Sweets at WuZhen.



Sweets at WuZhen.



Pork Stew at WuZhen.



Duck Drumsticks at WuZhen.



Pork Knuckles at WuZhen.



Tung Po Rou at WuZhen.

This was only from the first 2 days of our trip - there is simply not enough space to include all the rest of our culinary highlights. To experience all you must join the Tour!

by Ar. Ng Chee Wee



Designerscollection
2015



Patrick Tan 012-8885945 Anna Wong 012-8088113 Melissa Chong 012-8869811



HQ :
Carpet Ideas Marketing Sdn. Bhd (Co.No. 1057656-U)
 28, Jalan 8/62A, Bandar Menjalara, Kepong, 52200, Kuala Lumpur, Malaysia.
 Tel No : +603 - 6277 4280
 Fax No : +603 - 6277 4281
 Website : www.carpetideas.com.my
 Email : info@cideas.com.my

KUCHING OFFICE :
SYARIKAT GLOBALNIAGA
 Lot 1618, Sublot 10, Lorong 6A, Jalan Setia Raja,
 Travillion @ Muara Tabuan, Phase 2, 93350, Kuching, Sarawak, Malaysia
 Tel No : +6082 - 333 929
 Fax No : +6082 - 336 929
 Website : www.globalniaga.net
 Email : info@globalniaga.net



flortrend



HQ :
Flor Trend Sdn Bhd
 1-7, Plaza Menjalara,
 No.1, Jalan Menjalara Idaman,
 Bandar Menjalara, Kepong,
 52200 Kuala Lumpur.
 Tel No : 03 - 6276 2881
 Fax No : 03 - 6274 2882
 Email : info@flortrend.com.my

KUCHING OFFICE :
SYARIKAT GLOBALNIAGA
 Lot 1618, Sublot 10,
 Lorong 6A, Jalan Setia Raja,
 Travillion @ Muara Tabuan, Phase 2,
 93350, Kuching,
 Sarawak Malaysia

Email : info@globalniaga.net
 Website : www.globalniaga.net
 Tel : 082 - 333 929
 Fax : 082 - 336 929

allure LOCKING



The Latest
 Flooring Innovation
 From **allure**

Featuring Simple Easy
 Clic System Installation



SYARIKAT GLOBALNIAGA

Lot 1618, Sublot 10,
 Lorong 6A, Jalan Setia Raja,
 Travillion @ Muara Tabuan, Phase 2,
 93350, Kuching,
 Sarawak, Malaysia.

Email : info@globalniaga.net
 Website : www.globalniaga.net
 Tel : 082 - 333 929
 Fax : 082 - 336 929

RESILIENT FLOORING

...has never been this easy to install.
 ...has never been looked this realistic.

FEATURES

- DIY, no glue, no underlay.
- Lay directly over your old floor.
- Looks and feels like real wood.
- Super durable and completely waterproof.
- Free from termite.
- Warm comfort and quite under foot.
- Suitable for Commercial and Residential.
- Scratch resistant.

SINAR WANG
 BE DIFFERENT

THE EXOTIC 3D DECORATIVE WALL PANEL SUPPLIER.

We can custom make architectural decorative wall panels under the
LUXE DESIGN ON PVC BOARD (suitable for both indoors and outdoors)
 Or **TOSCAN DESIGN PANEL** (on MDF suitable for indoors)



We have the technology to give you the freedom to express yourself via either engraving or cut through on PVC or MDF boards to the designs of your making.

Endless design options for partition & decorative screens, decorative doors, decorative wall panels, company sign board, advertising panels, light box, products' labels, baluster, ceiling decoration for hotels, shop fronts, entertainment places, residential and commercial spaces and any place you can think of !
 (*pictures shown are for reference only)



SINAR WANG PRODUCTS & SERVICES (SARAWAK) SDN. BHD.

No. 630, Blk 11, Lot 762, Mtld, Phase 1, Tabuan Jaya Shophouse, Lorong 2B1, Jalan Urat Mata, 93350 Kuching, Sarawak.
H/P : 0128866567 / 0138998568 / 0138338929 / 0138628929 **TEL** : 082366969 / 082366328 / 082366767
Fax : 082366969 **Website** : www.sinarwang.com **Email** : dorina@sinarwang.com / bong@sinarwang.com

WE LOOK FORWARD TO BE OF SERVICE TO YOU !

.....TO MAKE YOUR IDEAS INTO A REALITY!

PAMSC EVENT CALENDAR 2015/16

* - confirmed * - subject to change

2015	MAY * BTS 2015 Thank You Party 8 May * PAMSC Study Tour 22-31 May	JUN * CPD: Designing for Fire Safety by Ar. Chong Lee Siong - 13 Jun * CPD: The Penang House by Dr. Jon Lim - 14 Jun	JUL * Intersection Newsletter * CPD: Roofing & Tiling Systems - 4 July * Written Exam Q&A Workshop - 11 July * Design Workshop: Kuching - 24-25 July	AUG * CPD: BIM or Not BIM? * Inter-Professional Games
	SEP * CPD: A Better Tomorrow: The Future of Cities by Ar. Dr. Tan Loke Mun - 19 Sep * Design Workshop - Sibul - 26-27 Sep	OCT * Intersection Newsletter * WAD 5.0 - 5 Oct * CPD - 10 Oct	NOV * Heritage Open House	DEC * PAMSC Practice Forum * Career Talk
	JAN * Intersection Newsletter * Members' Nite	FEB * CNY Open House * Heritage Open House	MAR * CPD	APR * AGM
2016				

Notice to members:

Certificate of Attendance for CPD Events

In order to reduce unnecessary printing for more environmental friendliness, PAMSC Committee has decided to prepare Certificate of Attendance for future CPD events **upon request by members only**.

Members are to make their request during their sign in/out of the event. Any request made after the event will cost RM 50.

Please be informed that LAM automatically updates members' CPD points after the event. Members are encouraged to check their CPD points via LAM website (lam.gov.my) from time to time. Members are requested to consider their choice carefully. Your cooperation is appreciated.



13 June - Ar. Chong Lee Siong's talk was full house. (74 attended)



14 June - Dr. Jon Lim (with bow tie) with his passion in pre-war architecture (30 attended)



4 July - Sponsor giving an introduction before the talk start. (36 attended)

We have been busy for the last few weeks, filling up our weekends with CPD talks. Firstly, we have Ar. Chong Lee Siong to share his experience in Fire Safety Design on 13 June 2015. This talk was sponsored by MAPEI, and was initiated by Education & Graduate Sub-committee to help those who are taking LAM Part III exam this August. On the next day, we jointly organised a talk with Sarawak Heritage Society (SHS) titled 'The Penang House and the Straits Architect 1887-1941' by Dr. Jon Lim from Singapore. On 4 July 2015, Sika sponsored a CPD seminar titled 'Roofing & Tiling System'. Mr. Derek Koo & Mr. Alan Law from Sika KL showed us the common issues, errors and solutions in choosing & applying waterproofing for both roof & tiles.

Our event calendar is packed for the coming weeks, please stay tuned on our website for more upcoming events.

Up-coming events:

1. CPD - PAMSC LAM Part III: Revision Course (11 July 2015)
2. CPD - The Architecture of Sarawak before 1963 (25 July 2015)
3. Design Workshop - Kuching (24-25 July 2015)

Report by
Events & CPD Sub-committee Chairman
Ar. Chai Si Yong

PRACTICE AND GOVERNMENT LIAISON REPORT

(A) AMENDMENTS TO ARCHITECTS ACT 1967 AND ARCHITECTS RULES 1996

Amongst the important issues is the composition of the Body Corporate with the eligibility criteria for 30% equity by other professions.

(B) HOUSING

Affordable Housing and Levy

Some of the key issues proposed in the workshop dated 15/5/2015 including the following:

- SHEDA suggested a review into the density of housing units and building setbacks from boundaries in order to cope with the escalating land prices.
- The developer may apply to pay levy in lieu of constructing of low cost housing subject to approval from relevant authorities.

(C) COUNCIL & BUILDING PLAN SUBMISSION

- Majlis Perbandaran Padawan has passed the resolution to allow Engineering and Building Section to check and approve Building Plans. The building plan need not be referred to Building Committee for approval.
- The Ministry of Local Government and Community invited our Chapter to participate a workshop on 'Food and Establishment and Miscellaneous Trade' and 'Reviewing of Sarawak Ordinance 1994'. Members are welcome to forward input on matters and issues regarding the Building By-Laws to the chapter.

(D) PLANNING SUBMISSION

- There was a Circular from Lands & Survey Department informing all applicants to omit the 'Approval Stamp' during planning submission. The 'Stamp' can only be printed in the drawings upon planning approval.
- Strata Title
Strata Titles labs were organized by Land & Survey Department on the 21st of May 2015 at Hilton Hotel.
The labs were conducted to review and amend the Strata Title Acts and issues relating to landed parcel and mixed developments.

(E) BOMBA

BOMBA requested our Chapter to compile issues and suggestions regarding plan submissions and expressed their wish to conduct a dialogue among consultants. Members' input and suggestions are urgently sought for.

Report by
Practice Sub-committee Chairman
Ar. Bong Joon Hin

Heritage & Sustainable Design Sub-Committee Report

The activities for this quarter are as follows:

"LEGACY OF THE WHITE RAJAHS – a sketch book of historical buildings in Kuching" is a book featuring the sketches of local historical landmarks by 14 year-old Yap Hanzhen, son of architects, Yap Yew Peng and Yvonne Yap. It is due to be launched in December this year and will feature sketches of Fort Margherita, Guan Tian Siang Ti Temple and the Kuching Courthouse amongst others.

Heritage Site Visit – in collaboration with the Sarawak Heritage Society, PAMSC will organize a site visit to the 'Old Kuching Hokkien School', located on a hill next to Chung Hua Primary School No.1. The tentative date of site visit is in late July, discussions are being held with the Hokkien Association for access to site, and for a local historian to provide commentary during the visit. Peggy Wong has been assigned to coordinate and organize for the event.

Heritage talk by architectural historian John Ting has been scheduled for the 25th of July 2015.

PAMSC Study Tour – the recently concluded study tour to Hangzhou-Shaoxing-Ningbo-Wuzheng-Shanghai is documented in the travelogue in this issue. The Chapter thanks Ar. Ng Chee Wee (Sub-Chair for Sustainable Design) for yet another fun and informative trip.



ROUND TOWER, KUCHING 01.06.2015

Report by
Conservation Sub-committee Chairman
Ar. Mike Boon

INTER-PROFESSIONAL GAMES 2015 UPDATE

Tay Buang Chuan and Ricky Hong have been busy coordinating this year's Inter-Professional Games which is scheduled for September.

The games confirmed for this year are:

GAMES	TEAM CAPTAIN	CONTACT
Golf	Henry Chuo	019-8292123
Futsal	Wee Liang Cheng assisted by Kevin Phua	012-8893200 / 012-8837770
Badminton	Tay Buang Chuan assisted by Bong JH	012-8562047 / 019-8896186
Bowling	Ricky Hong assisted by Kho Meng K'ang	016-8601601 / 012-8932366
Darts	Philip Chang	012-8889339
Table Tennis	Daniel Su	
Running	Pending, if confirmed	

Running and table tennis have been proposed but yet to be confirmed.

PAMSC members interested to participate are requested to contact this various team captains.

LAM Part 3 Exams updates

The Education & Graduate Sub-Committee was in full swing to help candidates with their preparations for the exams; an informal Q&A session was held with past examiners Ar. Philip Chang and Ar. Ng Chee Wee on 18th April 2015 - mainly focusing on tips for the oral exams. The active participants in our study group are: Nur Ashikin Mohamed Khalid, Amanda Lau, Jascinta Yii, Michelle Lau, Ling Tieng Thai, Lau Chee Kiong, Ricky Hong, Emmeline Ong, Jasper Ling and Gordon Bara. Contact them if you know them and wish to prepare for your exams.



Our team is also in the midst of organizing library materials such as reference books, notes, past exam papers and DVDs at PAMSC. These resources will be available for borrowing to all PAM members as listed below:

Seminar Notes:

1. Architect's Appointment on 05.04.2014 by Ar Sunny Chan Hean Kee
7. Advanced: Dispute Resolution in PAM 2006

Professional Practice Course 2014 Notes

2. Introductory : Building Legislation and Regulations
 - Understanding
 - National Land Code 1965 and Town and Country Planning Act 1976

3. Introductory : Building Legislation and Regulations
 - Designing for Fire Safety
 - Part 1: Means of Egress
 - Part 2: Compartmentation
 - Part 3&4: Active Systems and Access for Fire Fighting & Rescue

4. Introductory : Contract Administration
 - An Overview on Building Contract Administration

5. Introductory : Building Legislation and Regulations
 - Housing Development [Control&Licensing Act] Act 1966 (Act 118) & Regulations
 - Housing and Development Act: Schedule G & H

6. Advanced: Certificates and Certification with Reference to PAM Contract 2006

8. Advanced: Housing Development [Control&Licensing Act] Act 1966 (Act 118) & Regulations
 - Overview of Law and Guidelines in Certifying Stage Completion under HDA

Professional Practice Course 2015 Notes

9. Professional Legislations and Professional Bodies
 - Related Acts and Circulars
10. Architect's Role in Society
 - An Overview of Practice, Professionalism, Role & Responsibilities
11. Professional Architect's Practice I
 - Architect's Appointment, Scale of Minimum Fees 2010 and Code of Professional Conduct.

Past Years LAM Professional Part 3 Examination

12. Test Papers From Year 1993 until Year 2014 Acts

14. Architects (Amendment) Act 2015

Report by
Education & Graduates Sub-committee Chairman
Ar. Kho Meng K'ang
 with the kind assistance of
Ar. Noraini Narodden and Nora Khalid

“Contributing to Architecture in Sarawak”



Gym building, Hitachi

We specialize in a variety of residential and commercial glazing systems –
 • INFINI • EUROGROOVE • SOLIDE • BI-FOLD & Laminated Glass

Seng Lee Glass Sdn. Bhd. 成利玻璃有限公司

Lot 9575 Jalan Pending 93450 Kuching Sarawak (387670-J)

T:082-337733 F:082-332255 E: info@sengleeglass.com W: www.sengleeglass.com

DOLPHIN T.J.P

HELENA
2112

ANDES
2028



www.dolphinsanitaryware.com.my | www.i-home.com.my



T.J. Pottery Sdn. Bhd. (176202-U)



I-HOME MARKETING SDN.BHD. (497273-A)

Tel | +605- 201 4525 (H/L) +605- 201 1993
 Fax | +605- 201 4503
 E-Mail | info@dolphinsanitaryware.com.my

Add | No.30, 1st Floor, Lot 7050, Jalan Sekama,
 93300 Kuching, Sarawak.
 Tel & Fax | +608- 234 5525
 E-Mail | allisonkjl@gmail.com

TO BIM*, OR NOT TO BIM

*Yes, you can be comfortable pronouncing it as a single-syllable now. Not B-I-M, just simply, BIM.

My BIM experience started during my internship at Hames Sharley. On my second week, I was sent to a three-day Revit course to learn this new software that I knew nothing about, and no one cared to explain Building Information Modelling to me.

I was still a final year Master student at that time, so the struggle was real for me. I can empathize with people who have to learn a new software and having to work in a different way. BIM is an interesting topic of discussion because everyone in the construction industry understands it differently. The response to BIM ranges from “We want to head in this direction, but don’t know where to start”, to “It is a good idea, but not for now”, to a swift “We don’t need that.”

So in the next four issues of INTERSECTION, I will guide you through the various aspects of BIM so you can decide whether it is a hurdle you cannot overcome, or one that you think you’ll never have to encounter.

Will we ever be BIM-ready?

The idea of *change* takes time to sink in, especially one of this magnitude. Despite that fact, if you have the slightest intention to start, you should very well start now. The longer you wait, the harder it is to bridge the gap with other competitors.

“Where are the competitors?” you might ask.

Trust me, they are coming.

Some are under the impression that the BIM movement will never affect them. This is how they’ve always done it, and it works perfectly fine. I am pretty sure it was working perfectly fine when everyone was drafting on their drawing boards in the 80’s. But someone had to introduce the idea of CAD and the whole construction industry moved despite the select few who were adamant with pen and paper.

The rest of you would just be content with CTRL+C and CTRL+V on many occasions.

And that same relief that you get on AutoCAD when you press delete instead of scratching mistakes off the tracing paper is what BIM is trying to give you, not just on a documentation level – but *all* levels of the building lifecycle.

Business owners need to start educating themselves on BIM because international and local universities alike have started exposing their students to BIM. Five years down the road you will have graduates knocking on your doors with qualifications that you aren’t able to accommodate on your shop floor.

If that doesn’t move you, what will happen when your clients get more educated and start demanding for your deliverables to be in BIM format?

If you think BIM belongs in the future, think again; BIM is happening right *now*.

PART 1

Theme

A detailed introduction to BIM

Target Audience

First half of article is broadly targeted to everyone in the construction industry; the article can also be read by engineers, surveyors, interior designers etc.

Second half of article is specific for architects

Content

- BIM in layman’s terms with examples
- Why should you go for BIM?
- What is stopping everyone else from going for BIM?
- Why you should go for BIM despite the challenges...
- How much will this cost me?
- What do you need to get started? (starter kit)
- How to prepare yourself and your team before starting on a project

PART 3

Theme

Keeping it together while expanding the team

Target Audience

Architects struggling with the Pilot Team and Project Architects who currently have a small Pilot Team and Project, and intend to start the second BIM project

Content

- Helpdesk; where and how to look for help when you are struggling
- What do you do if the problem is not within your team, but other consultants?
- Tips on BIM-ing with your clients and other consultants
- Good practice tips / checklist to ensure your models are in tip top condition
- Now that the model is getting bigger, is the computer getting slower?
- How to deal with corrupt models and “missing items”

PART 2

Theme

Baby steps for kick-off and Getting the BIM ball rolling

Target Audience

Architects who have been wanting to start BIM but don’t know how to / have too many excuses

Content

- Choosing the “Pilot Team” and “Pilot Project”
- How, when and where to train your pilot team
- Outcomes and expectations of first month
- Understanding how BIM works
- Setting up your library, standards, network/server, converting standard drawing details
- Remember, the software is only a tool. It is meant to make it easier for you.

PART 4

Theme

Wrapping up & Where do we go from here

Target Audience

Architects finishing up the Pilot Project

Content

- Keeping your models just like you keep your drawings; as-built, for construction, etc
- Importance of having good discipline within your team; be systematic throughout the project so you don’t have unnecessary work at the end
- Are BIM forums necessary for your team? (on-going training)
- Do all of your projects need to be done with BIM?
- Copyright and “borrowing” from other sources
- Preparing your BIM models for other softwares (ie: Navisworks, Tekla, Excel)

What is BIM?

From my personal experience, BIM is a process. That is as simple as the definition gets, but to truly *understand* BIM is not about memorising the steps or the process but to *practice* it in your daily operations.

Imagine one of your projects and that you are capable of building it virtually in any given software. All your brick walls are painted, wet areas done in tiles, pipes concealed in a riser, ducting hidden by your suspended ceiling, furniture layout done with specialized joinery – *everything* is in the right place with the right dimensions. Then imagine all elements in the model possess the information that it does in real life, so when you select the tiles in the 3D model, it will not just give you the tile size, but also the material, colour, surface type, manufacturer, lead time and product code.

Now you can construct your building on site based on this virtual model, which the building owner can then keep for maintenance and future renovation purposes. This 3D model, when done correctly, will save you time in design, documentation, coordination, construction and building operations.

Bear in mind that not all 3D models are BIM, but all BIM models are in 3D. The major difference is that BIM models possess data contributed mainly by architects, engineers, surveyors, landscape and interior designers. This means that everyone is sharing from a single pool of information and extracting them for different purposes.

BIM isn’t just about a software.

Getting software capable of BIM such as Revit or ARCHICAD, only addresses the technological aspect of it. There are another two factors that make up the equation; the organizational aspect which deals with management support – how to think, communicate and oversee expectations around BIM while the operational aspect deals with the method in which day-to-day tasks are carried out.

Implementing BIM in the office should start with a clear vision of

- what you want to achieve,
- when you want to achieve it,
- how you are going to get there,
- why you started,
- where training will take place
- and who are the people responsible in the team.

You will need to tailor an execution plan to suit your team, the kind of projects that you do and the pace at which you want to run it.

If this is the point where you decide that it is getting too complicated and you don’t have the time and money for it. Hang in there, I’ve come with good tidings!

It’s not as expensive as you think, and you can find time for it.

Of course it will cost you money, but it doesn’t have to be expensive. The bulk of your spending will be on acquiring BIM software, upgrading your hardware to meet system requirements and training your team. You don’t have to hire new staff either – try to work within your current capacity.

You may want to start off by picking your smallest project to carry out as a pilot and equip one computer in the office with the right tools. Whatever your decision is, make sure you explore all options of obtaining the software, from perpetual license to pay-as-you-go subscriptions.

Staging your purchases as part of the rollout plan will also be useful if you change your mind about certain items in your to-buy list in the future.

Just like your expenditure, staff training can be done in phases as well. Not everyone on the team has to go on Day 1, and not everyone has to go to expensive full-day classes. Especially with smaller firms, you can’t afford the indirect costs from loss of productivity during training so plan your timelines realistically. While your technical team expands their skillset in BIM software, the management team can still work on setting achievable goals for the entire firm.

You’re never too small for BIM.

BIM should be able to add value to any team, any project, of any size, and any budget range. The actual number of people working on the model is irrelevant; whether you run a one-man show or a consortium, it is the collaboration between disciplines that matters most.

If you still believe you can’t execute BIM on your own, find a buddy. In fact, even if you’re team is not small in size, you could always start the journey together with other consultants. You’d be surprised with the amount of knowledge you can gain by sharing experiences and techniques with one another.

I think of BIM as a process because it is continuous. Regardless how long you take to fully implement BIM in your organization – six months or two years – reviewing your performance should still be carried out even after the rollout is over. Create a strategy to sustain the transformations you have made and to keep your team up-to-date as BIM evolves.

INTRO

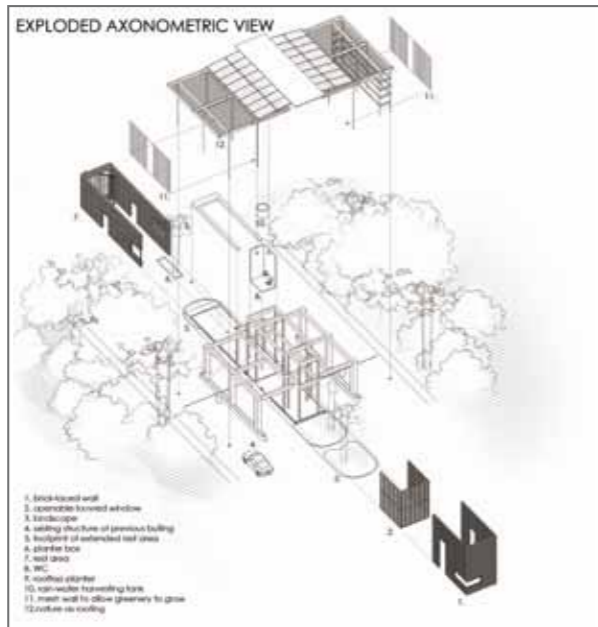
Hello! I am Nora. I graduated from University of Western Australia and worked with Hames Sharley for three years before coming back to Kuching for good. I have been a Revit user for nearly four years now – I wouldn’t call myself an expert on BIM, but I probably know a thing or two. Hopefully some of you can benefit from this article and the coming installments. Happy reading!





CITIZENS AGAINST RAPE WALK

Ar. Ivy Jong signed a petition on behalf of PAMSC at the 'Citizens Against Rape' walk at the Friendship Park, Kuching.



PAM AWARDS 2015

Sara Wee collects the Commendation Award on behalf of her father - the prize was given for the Leisure Farm Resorts Guardhouse in Johor Bahru (Additions and Alteration Category) With her is project architect, Mr. Freddie Lo who worked on this project during his time at Design Network Architects.



FOR THE ALBUM ... The Jesuits, Franciscan Friars, Franciscan sisters and other visitors posing with the residents of Home of Peace

FOOD FOR THOUGHT

Life Cycle

In a recent interview, Jack Ma of Alibaba fame talked about the various stages of an entrepreneur's career - he listed them along these lines:

- Before 20, study hard.**
- 20-30, find someone good to work for, someone who can teach you the passion.**
- 30-40, decide on the direction of your career (and hopefully decide to start up your own company)**
- 40-50, find out what you are good at and keep doing that.**
- After 50, invest in the younger generation because they are better than you.**
- After 60, retire to sit on the beach.**



AKDI amongst Top 10 Architectural Firms in Malaysia

Arkitek KDI Sdn. Bhd. was amongst the award winners of the "BCI Asia Top 10 Architects in Malaysia for 2015" at the 11th Annual Building Construction Index (Asia) Awards 2015 ceremony held in Kuala Lumpur in June. Dato Sri Ar. John Lau Kah Sieng who founded the firm in 1977 received the award for the second consecutive year. He says that "...being recognized as Top 10 among more than 400 architecture firms in Malaysia is indeed a great honour, not only for Arkitek KDI, but also for Sarawak."

The BCI Asia Awards, first held in 2005, celebrates excellence in architecture firms with the aggregates given for their sustainability and local green building ratings.



These were his words of advice for the younger generation of entrepreneurs, to encourage them to do better in their careers.

I wonder if this can be applied to our profession as well. At 51, I feel somewhat entitled to make some useful comparisons and suggestions.

In your 20's, study hard. Don't worry about which university is better than the other. It's mostly you who makes the difference, so go to one that you can afford. Recognised by LAM? - all this might be irrelevant if only degrees from local universities are recognized. In any case, it's not the end of the world, simply humble yourself and go for the assessment interviews. Remember that in the first three years of an architecture course, they teach you to "do" whereas in the final two years, they teach you to "think". Never confuse the two.

Before 30, register yourself with PAM and LAM to learn about your profession in Malaysia and to prepare for your registration exams. Find a job and remember that the probation period is for you as well as the employer; this "walk out" clause enables you to do just that if the job doesn't meet your expectations. What should your expectations be? There are 4 basic stages to an architectural project; get involved in all of them and understand the mechanics and systems. Not only is this experience useful for the LAM Part 3 exams, these hard skills will be useful when you set up your own practice.

And find a mentor to teach you the soft skills; how to manage people, your clients, staff, contractors and to learn the passion that drives a good practice. These two go hand in hand - architects who are passionate about their work are usually good mentors.

30-40; hopefully you have passed your registration exams and are now qualified to set up your own practice. Take a moment to think about your objectives - to make more money? To make a name for yourself? This will shape the nature of your practice, how you practice and ultimately shape your work - magazines like to refer to this group as emerging architects. Imagine! Emerging only after 20 years of practice - architecture has a long gestation period indeed.

40-50; so you have been in your own practice for more than ten years now and hopefully, you have made your mark. Be it an architectural style or a particular building type, a passion for teaching or social change, for research and technology - whatever it is, you are good at it and known for it. Members of the fraternity associate you with this line of work and the public recognise you for it. In some small way, you have left your legacy.

50-60; time to take stock - you have 15 good years left, if you watch what you eat; architecturally and gastronomically - think ala-carte and not buffet. Time to think about doing good, rather than doing well for yourself. Remember when you were guided by mentors in your thirties? Time to pay it forward and invest in the next generation. They have the drive to take the practice to the next generation. This is another way of leaving your legacy; in people.

I disagree with Jack Ma on his last point, it is unlikely that many of us will retire to sit on the beach at 60. Chances are we will still be working at 60; at best, trying to finish one's "best" building to culminate a lifetime's portfolio and at worst, to pay off an overdraft.

Let's hope that it's the former and not the latter.



PAINTING TREES

On Saturday afternoon four years ago, a group of young students painted a mural of trees at the Home of Peace. Since then, the silhouette of trees has been a popular backdrop for group photos, as seen in this gathering of Franciscan priests and sisters. This is a valuable lesson for young designers; that their actions matter when applied in the correct manner, like paint onto a mural.

by Min

Publisher: **PAMSC Publication and Information Committee**

Designer: **Aleph Tav Enterprise** (92250)

H/P: (HJ Chen) +6017 850 3683 (Lee) +6012 895 1334 Email: alephtavart@gmail.com

Printer: **WISMA PRINTING SDN BHD**

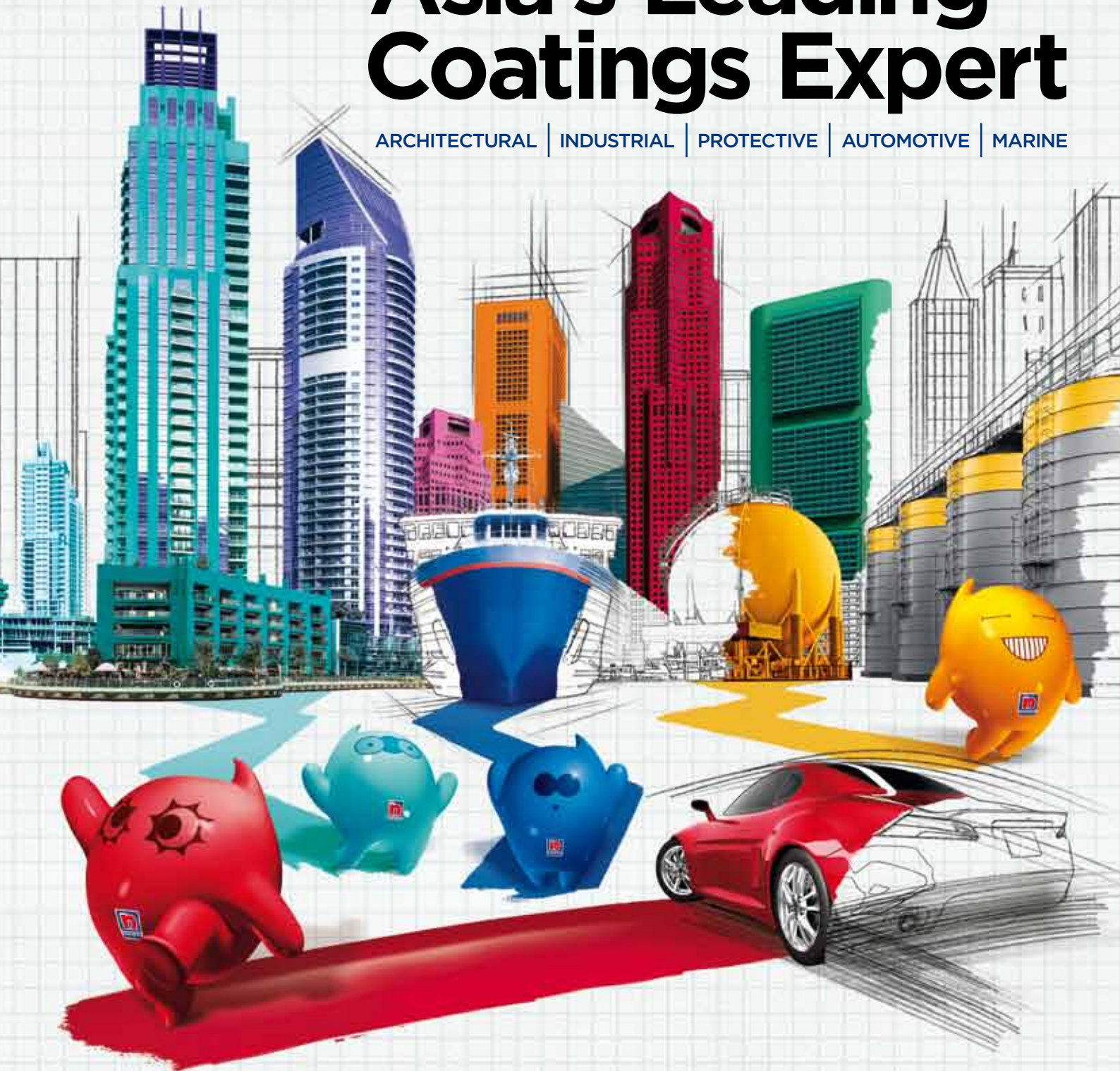
No. 1949, 1st Floor, Jalan Tekad, Pending Industrial Estate, 93450 Kuching, Sarawak. Tel: 082 338 131 Fax: 082 333 002 wismaprinting@yahoo.com

#PaintAllSurfaces

with

Asia's Leading Coatings Expert

ARCHITECTURAL | INDUSTRIAL | PROTECTIVE | AUTOMOTIVE | MARINE



Scan me. It will make your day.



THE COATINGS EXPERT™

1-800-88-2663 www.nipponpaint.com.my