

# INTERSECTION



YOUR NEW 2025-2026 NEW  
OFFICE BEARERS, COMMITTEES  
AND SUB-COMMITTEES

**PAMSC - BDA**  
**ARCHITECTURE PROJECT COMPETITION 2025**  
**- BINTULU URBAN PARK 2025**  
**[BUP2025]**

# CONTENT



## CHAIRMAN'S MESSAGE

1

MAIN FEATURE:

PAMSC-BDA ARCHITECTURE PROJECT COMPETITION 2025

## BINTULU URBAN PARK 2025 [BUP2025]

3

## 2025-2026 NEW OFFICE BEARERS, COMMITTEES AND SUB-COMMITTEES

19

PRACTICE AND LIAISON

## ARCHITECT ENGAGE IN SARAWAK BUILDING BYLAWS REVIEW

26

EVENTS AND CONTINUING PROFESSIONAL DEVELOPMENT :

PAMSC TECHNICAL TALK 5/2025

## BRAVEHEART

28

PAMSC TECHNICAL TALK 6/2025

CREATING MODULAR DATA CENTRES:

## DESIGN STRATEGIES FOR STRUCTURAL ELEMENTS — UNDERSTANDING FUTURE INDUSTRY TRENDS

30

PROJECT FEATURE:

## BORNEO ECO SHOW 2025

31

GRADUATES:

## AI FORUM SPARKS IDEAS FOR UNIMAS GRADUATES

33

## OUR PARTNERS

35

# CHAIRMAN'S MESSAGE

“

As we approach 50 years in 2026 since the formation of PAMSC, I would like to take this moment to reflect on how far we have come — as individuals, as a profession, and most importantly, as a community. PAMSC's continued relevance and presence would not have been possible without the commitment, passion, and spirit of volunteerism shown by its members throughout the decades.

What may have started as simple gatherings — bonding over meals, conversations, and shared travels — has since evolved into a purposeful organisation. One that is focused on promoting, protecting, and advancing the architectural profession in Sarawak.

Over the years, we have forged meaningful relationships with ministries, contributing to policy formulation through active participation in workshops and seminars. We have played a role in reviewing and refining critical documents such as the Sarawak Building Ordinance, By Laws and the Development Control Standards.

# CHAIRMAN'S MESSAGE



Beyond policy, PAMSC has also partnered with local councils and agencies in organising design competitions, placemaking initiatives, and collaborative events that strengthen ties between architects and the wider community. Our outreach extends to architecture schools — and even to secondary schools — where we introduce young minds to the world of architecture. These efforts form part of our broader commitment to engage meaningfully with society at all levels.

Amid all this, we continue to serve our members — organising CPD programmes, creating a welcoming and resourceful space at our PAMSC Centre, and representing the chapter across various platforms. We strive to be a voice that matters — contributing ideas and expertise that shape a more thoughtful and inclusive built environment.

Looking ahead, our greatest challenge will be to remain relevant in an ever-evolving world. This means curating conversations that reflect contemporary issues, embracing new ideas and diverse perspectives, and supporting the next generation of architects. PAMSC remains the sole collective voice for architects in Sarawak — and we have the capacity to make a difference.

Having been part of PAMSC's journey for over 12 years, I have had the privilege of witnessing its evolution into a close-knit, dedicated, and dynamic community. This growth is something I deeply value and hold with great pride.

It is truly an honour to lead and collaborate with such a committed committee. Together, we welcome and encourage the involvement of young architects with fresh ideas and renewed energy — individuals who will shape and carry PAMSC confidently into the next 50 years and beyond.

”

Ar. Noraini Narodden

PAMSC-BDA ARCHITECTURE PROJECT  
COMPETITION 2025

# BINTULU URBAN PARK 2025 [BUP2025]

AT PANTAI TANJUNG BATU, BINTULU  
AND BINTULU WATERFRONT

The **Bintulu Development Authority (BDA)** took a bold and progressive step by initiating an open architecture design competition for the new Bintulu Urban Park at Pantai Tanjung Batu and Bintulu Waterfront. Rather than issuing a conventional Request for Proposal (RFP) for public projects, BDA partnered with **Pertubuhan Akitek Malaysia Sarawak Chapter (PAMSC)** to deliver a transparent, idea-driven platform that invited creativity and innovation from the architectural community. It is one of the first government-led design competitions in Sarawak — a significant milestone for the profession.

This collaboration led to the **PAMSC-BDA Architecture Project Competition 2025: Bintulu Urban Park 2025 (BUP2025)** — a call for designs that reimaged the urban interface between Bintulu's coastal and riverfront edges and community spaces. The competition brief focused on the design of a 30-acre public park at Pantai Tanjung Batu, together with a 2.5-kilometre stretch along the Bintulu Waterfront, extending and enhancing the narrative of the existing Bintulu Urban Park within the Bintulu Land District. It called for thoughtful responses that could demonstrate creativity, local identity, environmental responsibility, buildability, and forward-thinking public space design.

MAIN FEATURE

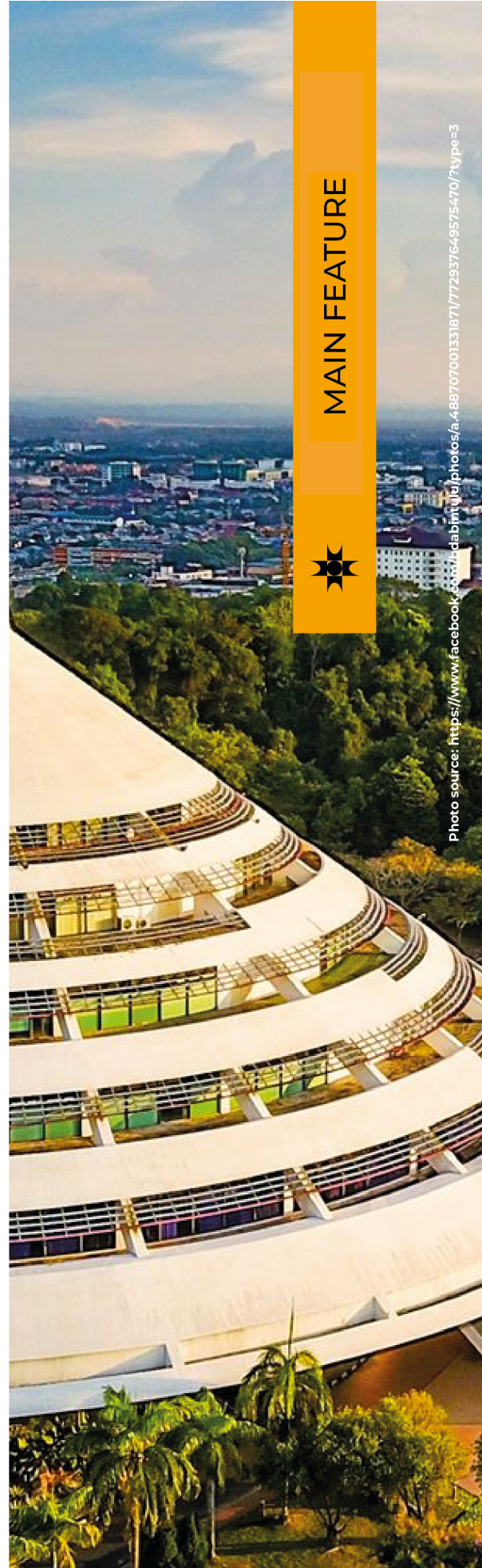


Photo source: <https://www.facebook.com/bintulubda/photos/a.488707001331871/772937649575470/?type=3>



x



Entries were evaluated based on four key criteria: strength of the **Design Concept**, overall **Design Excellence and Creativity**, integration of **Sustainable solutions**, and the realism of **Economic and Financial Viability** within the proposed scheme.

This competition reflects the aspirations of the **Bintulu Development Authority Strategic Plan 2024–2030**, which outlines a new vision for Bintulu as a model of **inclusivity, liveability, and sustainability**. By fostering meaningful partnerships and engaging in inclusive dialogue, BDA aims to align development initiatives with the broader objectives of the Sarawak Post-COVID Development Strategy (PCDS) 2030. The competition serves as one of the many steps toward harnessing collective wisdom and driving collaborative action in shaping Bintulu's urban future.

The competition was officially launched on 16 December 2024, with registration extended until 24 January 2025 and an original submission deadline of 28 March 2025. Following feedback from participants — citing the complexity of the two-site brief, RM22 million realistic budgeting requirement, extension of registration subsequently the delay of queries feedback and the timing of Ramadan — the deadline was extended to 30 April 2025. Participants received query responses by 6 February, allowing almost three months to finalise their submissions. Judging took place from 2 to 15 May, with the winners announced at a press conference on 16 May 2025. The official award ceremony will be announced in due course by BDA.

The competition drew entries from Sarawakian architects across the state, each bringing their unique vision to the table. Despite challenges like a tight submission timeline and complex site conditions, the participants responded with bold, thoughtful, and site-sensitive proposals. The 7 jurors were especially impressed by the depth of research, the variety of spatial strategies, and the community-centric thinking on display.



After an intensive two-stage judging process — including individual evaluation and a closed-door deliberation session — five outstanding entries were recognised:



First Prize – RM50,000: **Arkitek Seni Kenyalang**, in collaboration with **T&J Quantity Surveyors Sdn Bhd**, was awarded the top honour for their visionary scheme, **Project Confluence**. The team will be formally appointed as the project consultant for Bintulu Urban Park.



Second Prize – RM35,000: **PDC Design Group Sdn Bhd** together with **Mukabumi Sdn Bhd & Manmade Studio** earned second place with their thoughtfully crafted proposal, **Seringi Jalin**.



Third Prize – RM15,000: **PDC Design Group Sdn Bhd**, in collaboration with **Collaborative Designlab** secured third place with their bold and imaginative concept, **The Sandcrawler & The Viewline Gateway**.



Honourable Mention – RM5,000: **Arkitek KM Sdn Bhd** received recognition for their comprehensive community-focused design **Pantai Tanjung Batu Family Park & Bintulu Scenic Waterfront Park**.



Honourable Mention – RM5,000: **Arkitek LH Wong** was acknowledged for their lively beachfront concept scheme, **WE-aving**.

The juries were encouraged by the diversity and ambition displayed in the competition submissions, each offering a unique perspective which to reimagine Bintulu's evolving urban and coastal identity. Collectively, the proposals demonstrated a strong desire to engage with themes of nature, community, sustainability, and placemaking — showcasing a commendable commitment to improving public spaces and reconnecting the city with its waterfront. In summary, the submissions showcased a rich mix of creativity, environmental awareness, and community-centered thinking. The juries appreciate the thoughtful exploration of Bintulu's urban potential — balancing aspiration with realism — to ensure meaningful and impactful outcomes for the city and its people.

PAM Sarawak Chapter (PAMSC) are honoured to partner with the Bintulu Development Authority (BDA) for their trust and forward-looking leadership, and all participating architects for their hard work, creativity, and professional spirit. The BUP2025 competition sets a meaningful precedent — that public architecture in Sarawak can be shaped through open discourse, ideas, and shared values.



ORGANISED BY



SPONSORED BY



PAMSC-BDA ARCHITECTURE PROJECT COMPETITION 2025  
**BINTULU URBAN PARK 2025 [BUP2025]**  
@ PANTAI TANJUNG BATU & BINTULU WATERFRONT

**PANEL OF JURORS**



JURY CHAIR

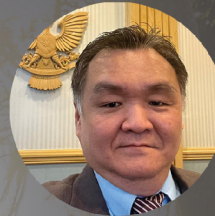
**Ar. Noraini Narodden**

Chairperson of Pertubuhan Akitek Malaysia  
Sarawak Chapter (PAMSC)



**Ar. Ng Chee Wee**

Eminent Sarawakian Architect,  
Past chairperson of PAMSC



**Ir. Chung Kian Heng**

Senior Manager,  
Building & Engineering Division (BED),  
Bintulu Development Authority



**Ar. Hjh Nurina Binti Matnor**

Eminent Sarawakian Architect



**Andre Kueh Richard Mering**

Architect,  
Building Plan Section (ARC),  
Bintulu Development Authority



**Sr. Ngo Chee Hong**

Eminent Quantity Surveyor,  
Committee of Royal Institute of Surveyors  
Malaysia (Sarawak Branch)



**Tiong Mee Ling**

Manager,  
Landscape Development Section (LAR),  
Bintulu Development Authority

**CONVENER**



**Ar. Chan Shie Wah**

Media & Publication Committee  
PAMSC

**CO-CONVENER**



**Ar. IDr Sim Shau Jiunn**

Event & CPD Committee  
PAMSC

**FOLLOW PAMSC & BDA  
WEBSITES FOR MORE INFO**

PHOTOGRAPHY BY Philip Maki

# PAMSC-BDA ARCHITECTURE PROJECT COMPETITION 2025 - THE PROCESS



Early birds on board — Juries and conveners from Kuching en route to Bintulu on the earliest flight on 15th May 2025 for the closed-door judging session at BDA headquarters!



Not your average check-in — A1 boards, reports, easels, and heaps of judging materials all packed for Bintulu!



Straight off the plane and straight to work — Kuching team joins BDA juries while conveners setting up boards and handing out judging packs.



All eyes on the boards — juries deep in discussion as they pore over concepts, videos, and reports.



Smiles, not standoffs — where constructive critique and professional dialogue led to a consensus on the winning entries.

# PAMSC-BDA ARCHITECTURE PROJECT COMPETITION 2025

## - THE PROCESS



All wrapped up (for now!) — jurors and conveners gathered for a group photo before enjoying a thoughtful lunch reception hosted by BDA. But the duty wasn't over just yet — post-lunch, they reconvened to finalise and vet the official jury citation.



A night of good food and great company — dinner with BDA's team including En. Wan Ibrahim, Pn. Donita Abdullah, Mr. Andre Kueh, Ms. Tiong Mee Ling, and Nuramyza Munira marked a warm close to the judging day, with enriching exchanges beyond the competition. Meanwhile, the convener team was already prepping for the next day's press conference, with the jury chair polishing up her speech too!



On 16th June 2025, press conference kicked off strong with an inspiring speech by BDA's General Manager, Datu Haji Muhamad Yakup Bin Kari — highlighting BDA's bold move to go the extra mile affirming their commitment to excellence through design competition, in alignment with the BDA Strategic Plan 2024–2030.

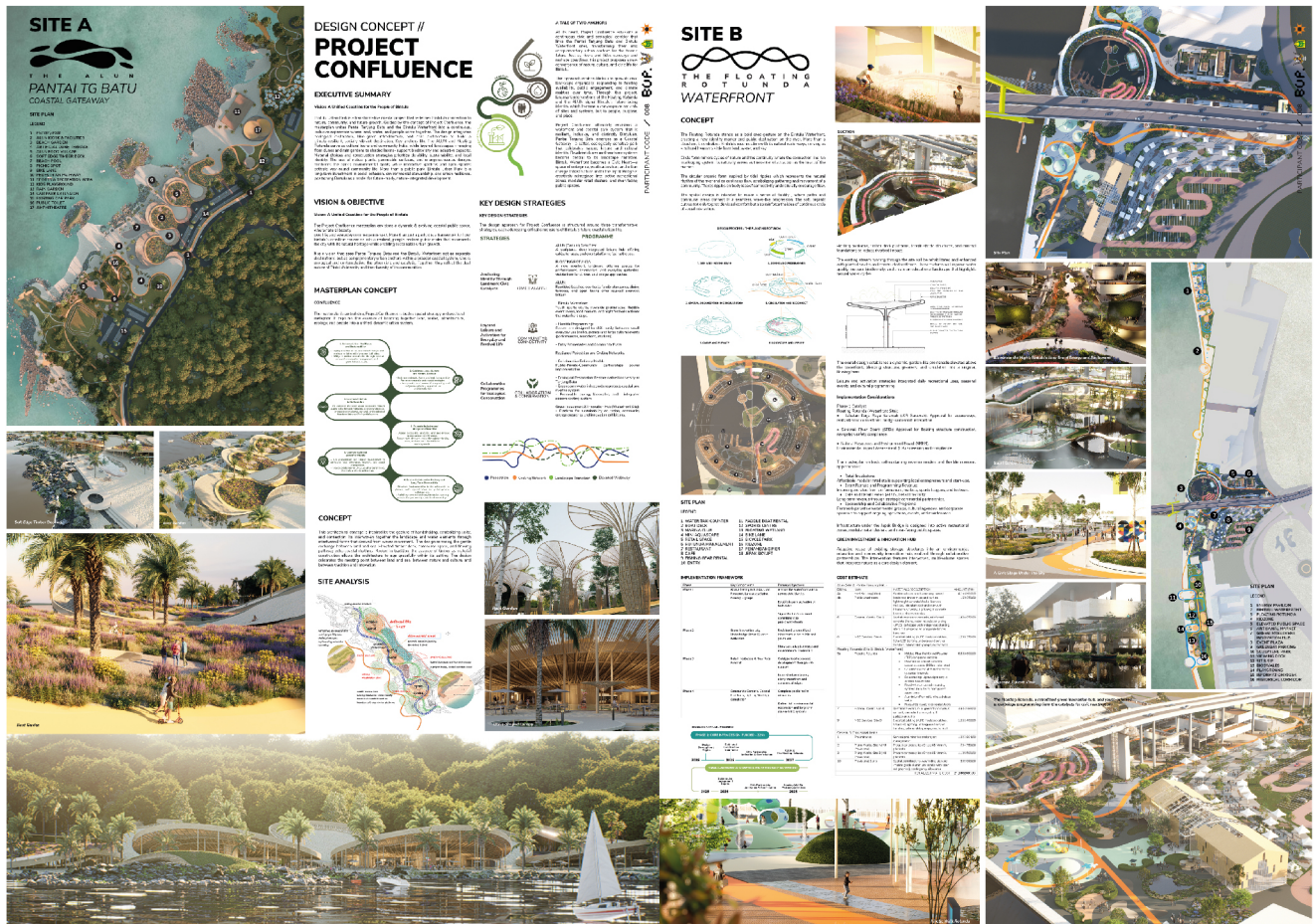


A proud handover moment — PAMSC Chair Ar. Noraini presents the winning board to BDA's General Manager marking the symbolic conclusion of the competition and a gesture of shared achievement. Till we meet again at the Award Ceremony!

# PAMSC-BDA ARCHITECTURE PROJECT COMPETITION 2025 - WINNING ENTRIES



1<sup>ST</sup> PRIZE



**Entry No**  
**Company & Architect**  
**In Collaboration with**  
**Project Title**  
**Author's Description**

: 008  
: ARKITEK SENI KENYALANG SDN BHD  
: T&J QUANTITY SURVEYORS SDN BHD  
: **Project Confluence - Where Industrial Meets Nature**  
: Bintulu Urban Park embodies the vision of Project Confluence, a unifying design that bridges Bintulu's industrial momentum with a new civic and ecological identity along its coastline.



At Pantai Tanjung Batu, Alun emerges as a wave-like architectural form that anchors the beachfront. Composed of sweeping rooflines, modular kiosks, and elevated promenades, it becomes a dynamic public interface, offering shaded respite, social gathering, and panoramic coastal views. Alun redefines the beach as a layered civic and recreational experience.



At the Waterfront, The Floating Rotunda stands as a landmark over water, a circular architectural promenade that combines glazed volumes, cantilevered terraces, and open courtyards. Framing views of the river and sea, it serves as a flexible hub for community events, performances, and leisure.

Together, these two anchors transform Bintulu's coast into a spatial dialogue between nature, architecture, and public life, signalling a confident new chapter in the town's urban evolution.

# PAMSC-BDA ARCHITECTURE PROJECT COMPETITION 2025 - WINNING ENTRIES



## 1<sup>ST</sup> PRIZE

### Jurors' Citation :

This proposal presents a bold and visionary concept that reimagines Bintulu's coastal and urban potential with creativity and sensitivity.

At Site A, Pantai Tanjung Batu is transformed into a vibrant "resort-style" development that harmoniously blends natural elements with engaging user experiences. For Site B, the scheme reflects a strong understanding of context, elevating the area's character through a cohesive design language and meaningful integration with the surrounding environment. Notably, the design preserves existing waterfront structures, thoughtfully repurposing them for community benefit.

The proposal introduces a contemporary and inclusive design approach that is both commercially viable and socially engaging. Its wide-ranging appeal—enhanced by features such as water-based activities, kinetic energy-generating components like the Energy Pavilion's Kinetic Walk, and the imaginative vertical use of space beneath the Jepak Bridge—positions it as a strong draw for tourism while remaining grounded in sustainability.

Strategically aligned with the BDA Strategic Plan 2024–2030, the proposal is backed by a comprehensive and realistic report that details practical material choices and a clearly phased implementation strategy. From landscape and structural design to materiality and spatial planning, the scheme reflects a well-conceived and feasible vision.

Visually, the design is striking—offering a seamless weaving of land and sea with a coherent architectural language. While the projected cost estimates may be optimistic, the inclusion of projected income, maintenance planning, and a contingency strategy illustrates foresight and a responsible approach to implementation.

A particular highlight is the floating rotunda, crafted from recycled materials within a controlled budget—an inventive solution that echoes the aesthetics of Gardens by the Bay and Balinese tropical architecture, and reinforces Bintulu's commitment to eco-friendly urban growth. The entire scheme is a compelling example of how sustainability, innovation, and beauty can coexist.

Overall, this is a standout proposal—ambitious, inclusive, and ready to serve as a future landmark for Bintulu.



# PAMSC-BDA ARCHITECTURE PROJECT COMPETITION 2025 - WINNING ENTRIES



2<sup>ND</sup> PRIZE



Entry No	:	006
Company & Architect	:	PDC DESIGN GROUP SDN BHD
In Collaboration with	:	MUKABUMI SDN BHD & MANMADE STUDIO
Project Title	:	<b>Seringi Jalin</b>
Author's Description	:	The transformation of Site A and Site B is guided by a tri-corridor masterplan—green, blue, and red—designed to achieve balanced urban growth that integrates ecology, community, and infrastructure.



The green corridor restores natural ecosystems within the city, promoting biodiversity and outdoor living through native landscapes, shaded walkways, and community parks.



The blue corridor reinforces the coastline using ecological strategies to reduce erosion and support marine life, while a pedestrian bridge connects both sites and enhances waterfront access.

The red corridor weaves urban life into the natural environment. Streets, buildings, and public spaces are aligned with green and blue systems, creating a cityscape that grows without displacing its ecological foundations.

This framework redefines development not as expansion at nature's expense, but as a process of integration—where environment and urban life evolve together. It offers a model for cities seeking growth rooted in resilience, sustainability, and respect for place.

# PAMSC-BDA ARCHITECTURE PROJECT COMPETITION 2025 - WINNING ENTRIES



## 2<sup>ND</sup> PRIZE

### Jurors' Citation :

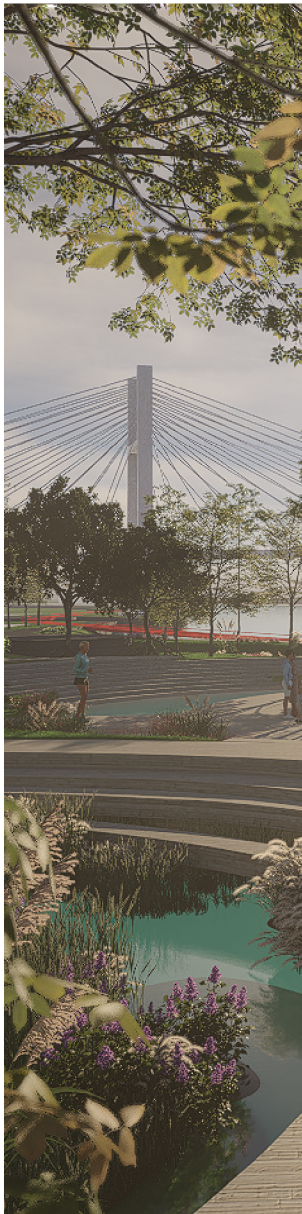
This submission offers a well-considered response to Bintulu's evolving urban landscape, grounded in a clear problem statement and a well-organized site analysis. By addressing challenges through a zonal framework, the proposal presents a focused and strategic approach to resolving localized urban issues. A particularly pure, bold and strong feature as a green corridor concept, which anchors the overall vision.

The design evokes a lively atmosphere, with a visually expressive concept that seeks to unify natural and built elements. At the heart of the proposal is the poetic use of coloured ribbons—representing the fusion of ecological systems with human-made structures—intended to stitch the site back into the wider city fabric and foster a renewed connection to place.

The proposal commendably includes suggestions for upgrading existing infrastructure and demonstrates awareness of real urban challenges. However, the proposed physical linkage between the two primary sites raises questions about feasibility. Furthermore, the absence of clear activation points or key nodes along the corridor weakens its potential to fully integrate with the broader context. A lack of detail on supporting components and construction methods also limits the project's depth and practical viability. Cost projections appear modest, possibly reflecting the limited range of programmed activities.

The accompanying report reflects a good understanding of site conditions and proposes future-oriented, pragmatic solutions. Conceptually, the submission is strong and memorable, with a compelling narrative around reconnecting communities through ecological and urban design. The idea of “weaving” built and natural environments is particularly inspiring.

While the proposal presents a visionary and ecologically sensitive framework, the scheme would benefit from more realistic planning, cost assessment, and technical elaboration.



# PAMSC-BDA ARCHITECTURE PROJECT COMPETITION 2025 - WINNING ENTRIES



3<sup>RD</sup> PRIZE



**Entry No** : 004  
**Company & Architect** : PDC DESIGN GROUP SDN BHD  
**In Collaboration with** : COLLABORATIVE DESIGNLAB  
**Project Title** : **THE SANDCRAWLER & THE VIEWLINE GATEWAY**

**Author's Description** : THE SANDCRAWLER

The Pantai Tanjung Batu proposal represent a transformative vision to revitalize the Bintulu's coastline, creating a vibrant public space where urban life meets coastal serenity. Situated downhill from Bintulu Development Authority (BDA) Council, the proposal re-imagine a vibrant community hub which naturally drawing people closer to the sea through carefully planned clusters of amenities. The design organizes space into distinct yet interconnected clusters of gastronomy zones, recreational areas with skate parks, playground, sand pool, camping site, and tranquil gathering spots which all responding to the community's diverse needs. These functional clusters create natural gathering points where residents can celebrate Bintulu's unique coastal character, with the restaurant pavilion's cantilevered roof echoing wave forms while framing panoramic sea views.



# PAMSC-BDA ARCHITECTURE PROJECT COMPETITION 2025

## - WINNING ENTRIES



### 3<sup>RD</sup> PRIZE

**Project Title** : **THE SANDCRAWLER & THE VIEWLINE GATEWAY**

**Author's Description** : THE VIEWLINE GATEWAY

The Bintulu Waterfront's proposal extends the urban fabric of Bintulu's city center to the Kemena River, creating seamless transition between built and natural environments. Inspired by the river's commanding sightlines, the design incorporates strategic elevation changes that create an engaging journey along the promenade. Elevated walkways offer breathtaking vistas while maintaining visual and physical connections to the platform below, where street stalls activate the promenade with local unique commerce. The design proposal thoughtfully integrated existing European-style landscape elements with contemporary interventions, using planter box to define spaces while providing flexible circulation paths. These green elements serve dual purposes, which anchoring the landscape design while the surrounding urban furniture creates inviting spots to pause and enjoy the scenery. The waterfront extends into the river itself with innovative features like floating amphitheatres, water taxi stations, and viewing decks that elevate the community's experience of their aquatic environment.



**Jurors' Citation** : The proposal demonstrates strong design intent and modern stylistic expression, particularly with Site A, planned as a family-oriented park with creative, user-friendly features. It presents innovative ideas with commercial potential and includes thoughtful provisions such as projected income, maintenance costs, and a contingency plan.



However, the design lacks cohesion between Site A and Site B. The two areas feel disjointed, with no clear unifying element or narrative to tie them together. While Site A carries a softer, more community-oriented atmosphere, Site B adopts a harder, more brutalist approach that contrasts sharply with the urban surroundings—giving it a youthful energy but creating a jarring transition between sites.

The waterfront design leans heavily on hard edges and concrete treatments. While the grand vision is evident, the execution lacks softness and sensitivity to the site's natural character. Materiality is mentioned in the proposal, but not adequately reflected in the visual perspectives or supported by tangible details.

Costing and buildability remain significant concerns. The estimated project cost appears unrealistic, and there's a disconnect between the proposal's visuals and its stated material use and budget. Moreover, a clear maintenance strategy is lacking, which raises questions about long-term viability.

Overall, while the proposal showcases a commendable level of creativity and modern design quality, its impact is diminished by the lack of integration between the sites and insufficient clarity in financial and construction planning. It represents a promising start, but would benefit from stronger cohesion, realistic budgeting, and more comprehensive implementation strategies.

# PAMSC-BDA ARCHITECTURE PROJECT COMPETITION 2025 - WINNING ENTRIES



## HONORARY MENTION



**Entry No** : 007  
**Company & Architect** : ARKITEK KM SDN BHD  
**In Collaboration with** : -  
**Project Title** : **Pantai Tanjung Batu Family Park & Bintulu Scenic Waterfront Park**

**Author's Description** : Pantai Tanjung Batu Family Park



Seaside Family Park at Pantai Tanjung Batu is a vibrant coastal destination blending nature, culture, and recreation. Overlooking the South China Sea, it offers stunning views, cool sea breezes, and lush landscapes. The park features cultural pavilions, storytelling spaces, and a lively food court. Families enjoy shaded picnic areas, playgrounds, and scenic lookout towers. Fitness trails, football fields, and outdoor gyms promote healthy lifestyles, while a camping zone invites overnight adventures. Wellness gardens and meditation pavilions offer tranquility, and an amphitheatre hosts cultural events. Inclusive and engaging, the park welcomes visitors of all backgrounds to relax, explore, and connect.



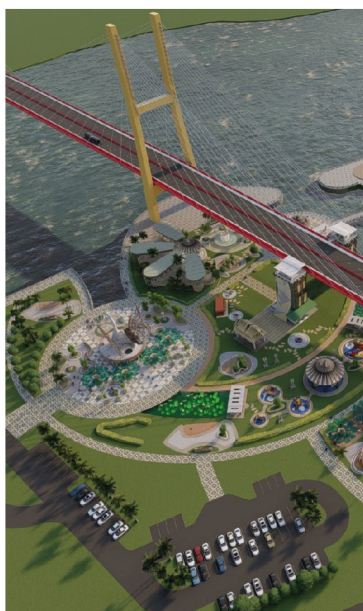
## HONORARY MENTION

**Project Title :** Pantai Tanjung Batu Family Park & Bintulu Scenic Waterfront Park

**Author's Description :** [Bintulu Scenic Waterfront Park](#)



Scenic Urban Park at Bintulu Waterfront is a captivating destination nestled beneath the Iconic Jepak Bridge, offering stunning views of the Jepak River mouth. This urban oasis combines recreation, relaxation, and cultural charm, welcoming both locals and tourists. Visitors can explore heritage pavilions, an Egret Viewing Deck, and lush gardens with an orchid pavilion. A vibrant food court offers diverse cuisines in a social setting. Families enjoy a safe children's playground and scenic viewing platform, while adventure seekers can scale a striking rock-climbing wall. Inclusive and dynamic, the park provides enriching experiences for all ages in a picturesque waterfront setting.



### Jurors' Citation :

This proposal offers a comprehensive layout but comes across as busy and crowded, with many elements competing for attention. The overall composition feels crowded, and there's an opportunity to simplify and refine the design for better clarity and user experience.

Conceptually, the scheme lacks a strong distinctive theme without a clear narrative or sense of place. The cultural and architectural references, while familiar, feel it could benefit from a more contemporary interpretation that resonates with today's urban and environmental sensibilities. The scheme can be commended for trying to weave in traditional and cultural elements of Sarawak.

The design would be stronger with more developed and cohesive ideas. The project does include clear projected income, maintenance costs, and a contingency plan with a good written report.

Overall, with clearer direction and modernized design language, this proposal has the potential to evolve into something much more compelling



# PAMSC-BDA ARCHITECTURE PROJECT COMPETITION 2025 - WINNING ENTRIES

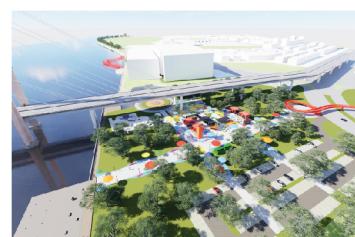


## HONORARY MENTION



Entry No : 010  
Company & Architect : ARKITEK LH WONG  
Project Title : **WE-aving**

Author's Description :



Inspired by the ebb and flow of the sea, our design draws from the continuous interaction between nature and human activity—where built and natural elements intertwine to shape seamless indoor and outdoor spaces.

For both sites, our proposal introduces a new 'in-between' space that acts as a transitional layer, mediating between the existing boardwalk and the water's edge. This new zone reconnects the public realm with the surrounding urban fabric, serving as a dynamic social platform. It is envisioned as a lively setting that welcomes spontaneous gatherings—be it acrobatic performers, young families, joggers, or casual strollers—where community life thrives organically. Here, a variety of events and live performances such as theatre, concerts, and artistic showcases unfold in harmony with the natural setting, reinforcing the site's role as a cultural and recreational anchor along the waterfront.

# PAMSC-BDA ARCHITECTURE PROJECT COMPETITION 2025 - WINNING ENTRIES



## HONORARY MENTION



### Jurors' Citation :

The proposal presents a simple and clear concept with a strong, appealing beach vibe—particularly at Site A, where the integration with the beachfront is well-executed and reflects a lively, contemporary design language. The inclusion of a food bazaar concept is timely and resonates with current trends, offering potential for community engagement and tourism.

However, the proposal begins to lose cohesion at Site B, where the suggested skybridge over the river appears overly ambitious and unrealistic given the likely budget constraints. While the hawker stall designs are visually attractive, the submission lacks sufficient detail on materials, sustainability strategies, and financial viability, which are essential for implementation.

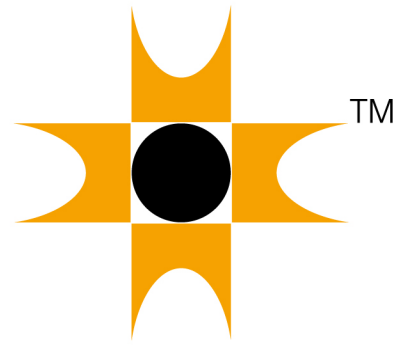
The cost estimate appears to be among the more realistic compared to other entries. However, the absence of projected revenue, maintenance costs, and a contingency plan weakens the proposal's long-term outlook and operational feasibility.

In terms of design resolution, the proposal feels singular and disconnected from the broader site context. Site A, in particular, is notably lacking in landscaping and softscape elements, which would have enhanced both comfort and aesthetic quality. The overall massing is flat, with few design punctuations to create spatial rhythm or visual interest. Some elements also appear temporary in nature, lacking the permanence or structural impact required for a lasting development.

While the program is straightforward and largely buildable, the proposal would benefit from greater integration across the two sites, enriched detailing, and a more holistic approach to design and planning.



# 2025-2026 NEW OFFICE BEARERS, COMMITTEES AND SUB-COMMITTEES





**AR. NORAINI NARODDEN**

Chairman

Noraini Narodden Architect (since 2015)  
University of Malaya 🎓

*"I aspire to lead PAMSC into its next chapter with renewed energy — fostering an inclusive, forward-looking community that empowers young architects and amplifies our collective voice in shaping Sarawak's built environment."*



**AR. LAU CHUN LEONG**

Deputy Chairman

PDC Design Group Sdn Bhd (8 years)

Limkokwing Institute of Creative Technology 🎓  
Taylor's University 🎓  
Universiti Teknologi Malaysia 🎓

*"I aim to strive for continuous improvement in the architectural consultancy industry through active engagement with relevant ministries, to elevate public awareness of the architectural profession and its value, and to inspire the younger generation of architects to actively participate in PAMSC — ensuring the enduring representation and protection of Sarawak architects' interests."*



**AR. JOHANN HARRIS SULAIMAN**

Vice Chairman

Archinexus Sdn Bhd (2023 - present)

University of Newcastle 🎓

*"Join PAMSC and let's create a better future for Sarawakian Architects!"*



**AR. STEPHEN MONG VUI MIN**

Honorary Secretary

SOP Property (2024 - present)  
Stephen Mong Architect (2022)

University of Western Australia 🎓

*"The leadership role and involvement of architects in engaging with government and stakeholders is increasingly becoming more crucial in determining the future of our collective built environment and society. PAMSC is the platform for this role. Come join PAMSC and make a difference!"*



**AR. ANEEM SORAYA HJ MENJI**

Honorary Treasurer

RKD Architects Sdn Bhd (2024 - present)  
PU Architects Sdn Bhd (2009 - 2023)

Universiti Teknologi Malaysia 🎓

*"Grateful for the chance to contribute and grow — and lucky to do it with a team that inspires me. Here's to a term full of learning and laughter with PAMSC!"*



**AR. BRENDAN TONG JIA CHIAN**

Committee Member

Senior Lecturer at  
University of Technology Sarawak

University of Melbourne 🎓

*"For this term, we wish to reach out and network with a broader Graduates and Education oriented audience, and we welcome our aspiring members to stay in touch with us and share their thoughts on what PAMSC means to them"*



### **AR. ALASTAIR WONG QIN WEN**

Committee Member

PKL Wong Architect (2012-2017)  
Arkitek Visireka Sdn Bhd (2017-2023)  
Arkitek Alastair (2023 - present)

Limkokwing Institute of Creative Technology 🎓  
Deakin University 🎓

*"Designing today, inspiring tomorrow"*



### **AR. INTAN SYAZWANI SAZALI**

Committee Member

GDP Architects Sdn Bhd (2013 - present)  
Artkitek KM Sdn Bhd (2009 - 2012)  
Law Kim Chui Architect (2008 - 2009)

Universiti Teknologi Mara 🎓

*"I'm looking forward to this new term as your editor. I hope to share stories that keep us connected and proud of our chapter's work."*



### **AR. MOHD AFIQ SHAZWAN ABD SAMAD**

Committee Member

David Ong Architect (2012 - present)  
RMIT University 🎓

*"The best of people are those who are most beneficial to others."*



**AR. CHAN SHIE WAH**

Committee Member

Don Cheong Architect (2011-2015, 2017-2021)  
JM Design Sdn Bhd (2021 - present)

University of Malaya 🎓

*"PAMSC is a platform where architects can shape not just buildings, but the future of our profession — by supporting young talent, championing fair practices, and being an active voice in policy-making for a better built environment."*



**AR. SIM SHAU JIUNN**

Committee Member

JM Design Sdn Bhd (2020 - present)

Taylor's University 🎓  
University of Malaya 🎓

*"PAMSC connects architects with industry and innovation — fostering meaningful exchange, technical knowledge, and collaborations that strengthen our profession and its impact on the built environment."*



**AR. JONATHAN LEE HUI KIONG**

Committee Member

PDC Design Group Sdn Bhd (2015-2019)  
JL Architect Sdn Bhd (2020 - present)

Limkokwing Institute of Creative Technology 🎓  
Taylor's University 🎓  
RMIT University 🎓

*"To advancing the architect profession and ensuring the association remains a vital resource for all architects."*



**AR. VANESSA LUNGAN LAI**

Committee Member

Jurubina Unireka (2022 - present)  
T. R. Hamzah & Yeang (2016 - 2022)

Universiti Teknologi Malaysia 🎓  
University of Sheffield 🎓

*" When we come together to collaborate, share knowledge, and support one another, we ignite the power to transform and drive meaningful progress for our society and the profession. So play your part and join PAMSC! "*



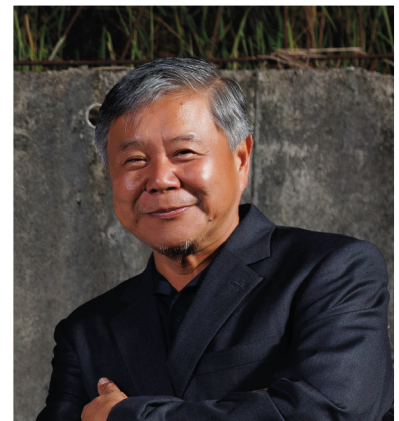
**MR. LOUIS TING**

Graduate Co-opt



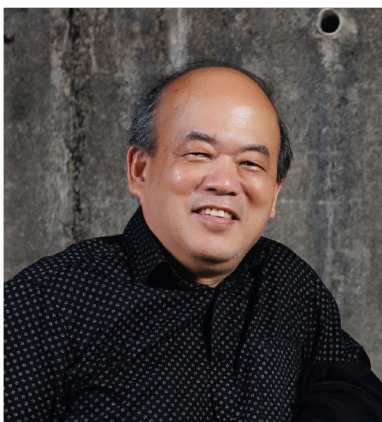
**AR. IDR CHAI SI YONG**

Immediate Past Chairman



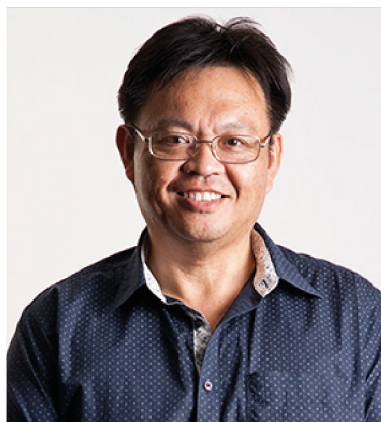
**AR. NG CHEE WEE**

Co-Opt (Past Chairman)



**AR. DESMOND KUEK**

Co-Opt (Past Chairman)



**AR. STEPHEN LIEW**

Co-Opt (Past Chairman)



**AR. IVY JONG**

Co-Opt (Past Chairman)



### PAMSC 2025/2026 OFFICE BEARER

Chairman	: Ar. Noraini Narodden
Dep. Chairman	: Ar. Lau Chun Leong
Vice Chairman	: Ar. Johann Harris Sulaiman
Hon. Secretary	: Ar. Stephen Mong Vui Min
Hon. Treasurer	: Ar. Aneem Soraya Hj Menji

### IMMEDIATE PAST CHAIRMAN

Ar. Chai Si Yong

### PAST CHAIRMEN CO-OPT

- 1) Ar. Stephen Liew
- 2) Ar. Desmond Kuek
- 3) Ar. Ng Chee Wee
- 4) Ar. Ivy Jong

### SUB-COMMITTEES

#### IT & Secretariat

Chair: Ar. Stephen Mong Vui Min  
Co-Chair: Ar. Lau Chun Leong

#### Treasury

Chair: Ar. Aneem Soraya Hj Menji  
Co-Chair: Ar. Vanessa Lungan Lai

#### Practice & Government Liaison

Chair: Ar. Johann Harris Sulaiman  
Co-Chair: Ar. Mohd Afiq Shazwan Abd Samad  
Co-Opt: Ar. Alastair Wong

#### Events & CPD

Chair: Ar. Sim Shau Jiunn  
Co-Chair: Ar. Aneem Soraya Hj Menji

#### Media & Publication

Chair: Ar. Intan Syazwani Sazali  
Co-Chair: Ar. Chan Shie Wah

#### Graduate, Education & BIM

Chair: Ar. Brendan Tong Jia Chian  
Co-Chair: Ar. Jonathan Lee Hui Kiong

#### Graduate Co-Opt

Mr. Louis Ting

# ARCHITECTS ENGAGE IN SARAWAK BUILDING BYLAWS REVIEW

PAMSC participated in the ***Mesyuarat Berkenaan Pindaan Building Ordinance dan Bylaws 2025*** held over two days on 12 June 2025 at The Waterfront Hotel, Kuching. The session was organised by the Ministry of Public Health, Housing & Local Government Sarawak (MPHLG) as part of ongoing efforts to review and update Sarawak's building ordinance and bylaws to better meet current industry needs and future development goals.

The meeting gathered policy makers, government officers, local councils, and professional bodies to share input and feedback on proposed amendment that will impact how buildings are planned, designed, and regulated across the state.

PAMSC played an active role, represented by Ar. Johann Harris, Ar. Peter Wong, Ar. Stephen Mong, Ar. Ivy Jong, Ar. Afiq Shazwan, and Ar. Alastair Wong. Their presence ensured that the architectural profession's views were heard, helping to shape regulations that are practical, sustainable, and aligned with Sarawak's vision for a better built environment.







PAMSC Technical Talk 5/2025

# BRAVEHEART

EVENTS AND CONTINUING PROFESSIONAL DEVELOPMENT



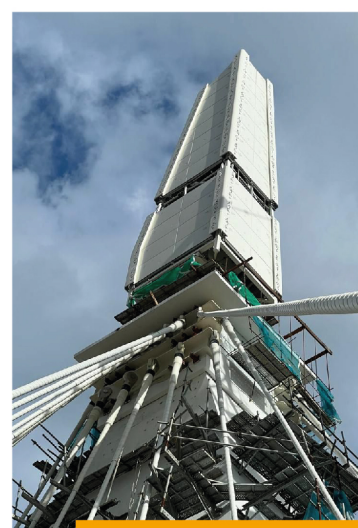
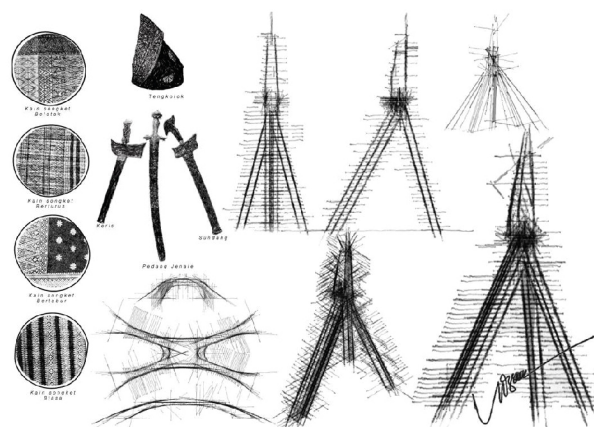


PAMSC held Technical Talk 5/2025, **“BRAVEHEART,”** on 17th May 2025 (Saturday) at the PAMSC Centre. The session drew 36 participants and featured two engaging speakers sharing real project experiences.

Hj. Mohamad Azrai Bin Karim spoke about designing a landmark for a Malay kampung in the heart of old Kuching, focusing on the Sungai Bintangor Bridge project. He shared the design process, the conceptual ideas behind the bridge, and the realities of working with the community and government agencies. He also discussed challenges faced along the way, including unexpected force majeure events that shaped the project timeline.

Mr. Keng Ben Sen from iMetal explained how a conceptual design is turned into a Bill of Materials (BOM) or cutlist for production. He described the practical steps needed to bring an idea to life, covering cutting processes, finishes, packaging, and installation on site.

The talk offered participants valuable insights into translating ideas into built reality.



PAMSC Technical Talk 6/2025

## CREATING MODULAR DATA CENTRES: DESIGN STRATEGIES FOR STRUCTURAL ELEMENTS

### — UNDERSTANDING FUTURE INDUSTRY TRENDS

PAMSC Technical Talk 6/2025 on 14th June 2025, titled ***“Creating Modular Data Centres: Design Strategies for Structural Elements – Understanding Future Industry Trends.”*** Sponsored by Saint-Gobain Malaysia, the session gathered 31 participants.

Speaker Mr. Wan Tiong Hing, Technical Development Manager, explained how good design choices improve the efficiency and flexibility of modular data centres. He discussed integrating drywall, ceilings, and flooring systems, covering fire safety and acoustic needs.

Participants learned practical design approaches and future trends for building data centres that meet changing industry demands. PAMSC thanks Saint-Gobain Malaysia for their support.



# BORNEO ECO SHOW 2025



By Ar. Chai Si Yong

BES  
2025

INTODESIGN LAB



The **Borneo Eco Show** was held from **9th to 11th May 2025** (Friday to Sunday) at the **Borneo Convention Centre Kuching (BCKK)**. The three-day event included a **Design Forum**, a **Trade Expo**, and ended with the fun and energetic **BESride Borneo Run** on Sunday.

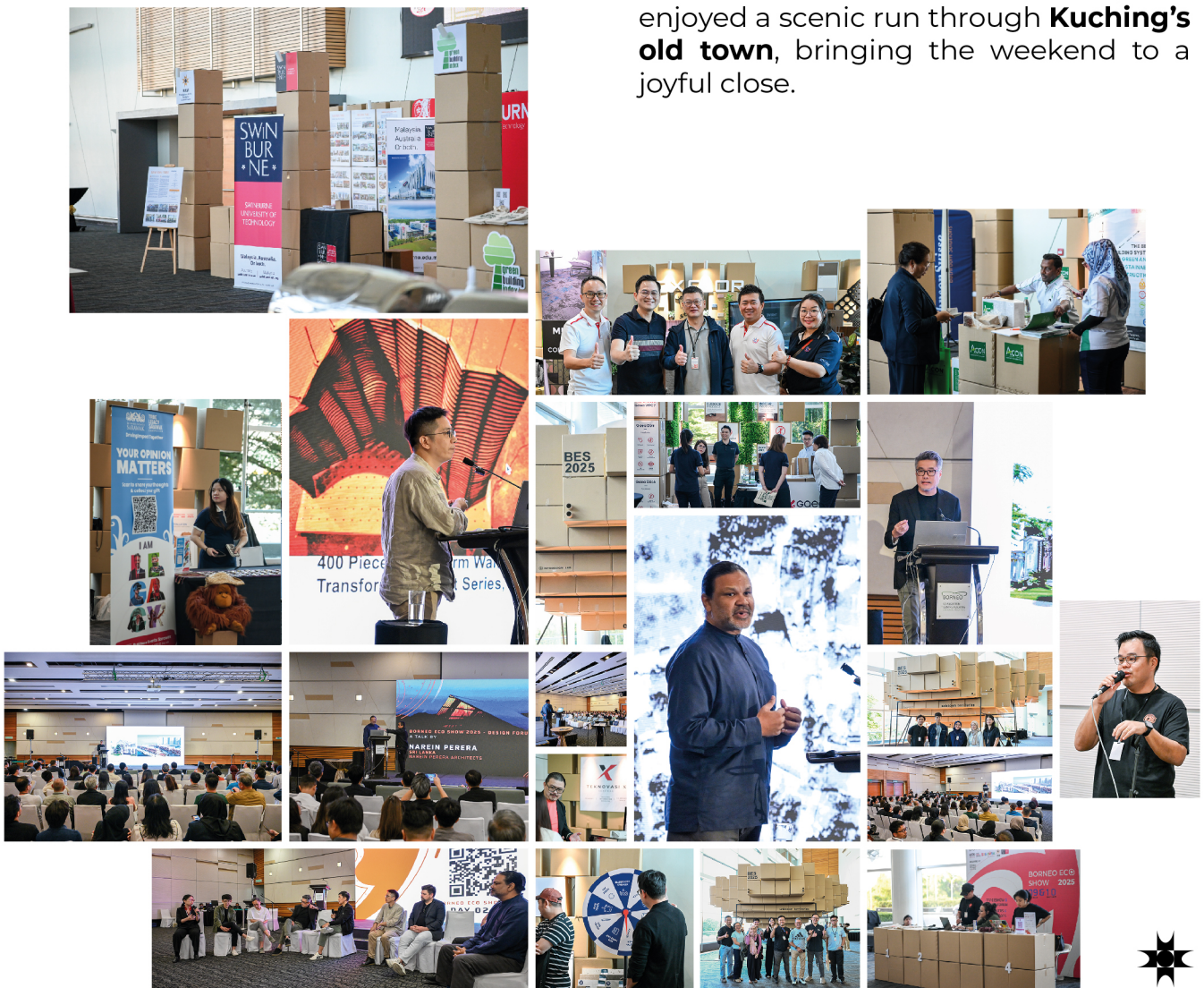
The event was organised by **BESTeam Sdn. Bhd.**, led by **Ar. Chai Si Yong** and **Ar. Stephen Liew**, with support from **Business Events Sarawak (BES)**, **PAM Sarawak Chapter (PAMSC)**, and **Swinburne Sarawak**. They were also assisted by **Absolute Cool Events Sdn. Bhd. (ACE)** and **Lek**.

The show was launched by **Deputy Premier Datuk Amar Prof. Dr. Sim Kui**

**Hian**, who praised the team for their hands-on approach—choosing to “just get on with it” instead of waiting around. He also highlighted how events like this help promote Sarawak’s culture, tourism, and local business.

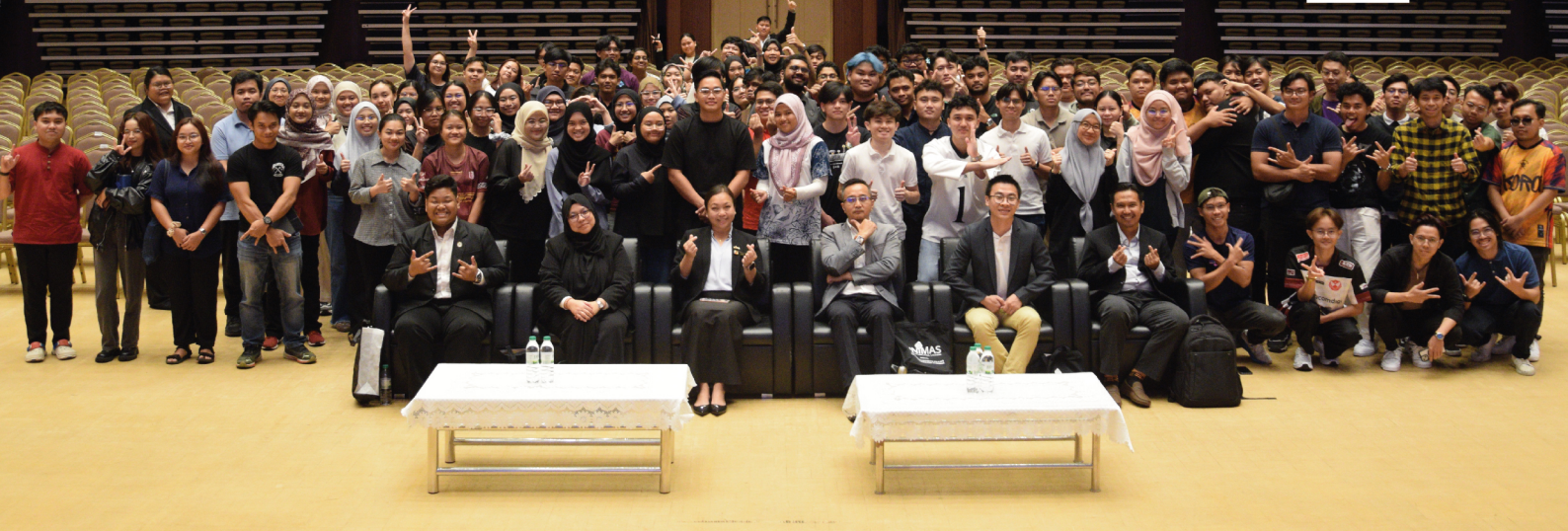
The **Design Forum** featured **eight speakers** from **Malaysia, the USA, China, Taiwan, Sri Lanka, Singapore, and Indonesia**. About **300** people attended, earning **10 CPD** points. One of the highlights was the final Q&A session on the second day—it was lively, inspiring, and ran well past its scheduled time, filled with shared learning and laughter.

The event wrapped up with the **BESride Run** on Sunday morning, where around **1,300** participants enjoyed a scenic run through **Kuching’s old town**, bringing the weekend to a joyful close.



# AI FORUM SPARKS IDEAS FOR UNIMAS GRADUATES

By Dr. Raja Nur Syaheeza



The recent Graduate Professional Programme (GPP) session at UNIMAS gave graduating students a chance to learn how Artificial Intelligence is changing the future of engineering and architecture. Held on 10 June 2025 at Arena Gemilang, DeTAR Putra UNIMAS, the session was organised by the Faculty of Built Environment and the Faculty of Engineering.

The forum, ***“Designing the Future: How AI is Transforming Engineering and Architecture,”*** was moderated by Alna Aqmar Bin Alwie. The panel included Hisham Bin Yakob, Ar. Intan Syazwani Binti Sazali, Ts. Dr. Chai Kok Chin, and Ar. IDr. Mitchell Tony Anak Mos. Together, they explained how AI tools are used in design, planning, and construction.

Students learned how new technologies can improve work processes and what skills they need to stay relevant. The panelists also answered questions about job opportunities and how to balance technology with human creativity.

The session encouraged students to think about how they can use innovation in their future careers and why keeping up with industry trends is important. For many, it was a good opportunity to hear real experiences and connect with professionals.

Programmes like this help students prepare for the working world beyond the classroom.

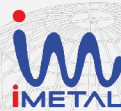


# OUR PARTNERS

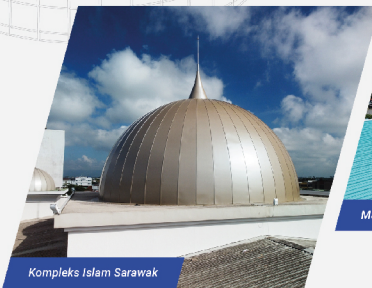


ROOFING  
CLADDING  
LOUVRES  
CEILING  
TRUSSES  
SCREENS  
FACADES  
DOME

Masjid Al-Abbyad Matang



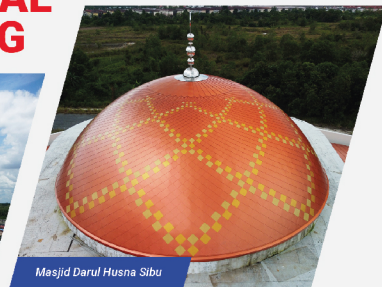
## DOME STRUCTURAL & FINISHING



Kompleks Islam Sarawak



Masjid Al-Hidayah Bako



Masjid Darul Husna Sibul

Kuching Tel : +6010-982 0235 / +6082-496336

Bintulu Tel : +6012-852 8712

enquiry@imetal.com.my

www.imetal.com.my

# LEADING

PORCELAIN & CERAMIC  
TILE BRAND IN  
MALAYSIA



Contact us for more information:

KINGRES MARKETING SDN. BHD.  
[Registration No.: 198401001796 (114311-T)]  
4 1/2 Mile, Kung Phin Road, Off Penrissen Road,  
93250 Kuching, Sarawak.  
Tel: +6082-451 567/ 451 017

**SIMPLICITE**  
Light Grey (600x600mm)

Follow us!



@Kimgres



@kingrestiles



@KimgresTiles



# OUR PARTNERS



## ALL-WEATHER WALL CLADDING

"The IKEA Blue coated steel is from our premium high durable **envioSHIELD** series which provides a plethora of benefits when applied to architectural surfaces.



+60 82-433 888



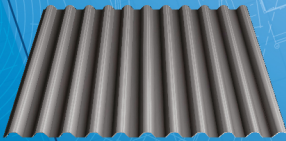
enquiries@asteel.com.my



www.asteel.com.my



asteelgroupmy



## LYSAGHT® SPANDEK OPTIMA™

The Versatile and Economical Choice for Commercial and Industrial Cladding

Upgrade with LYSAGHT® SPANDEK OPTIMA™ - Advanced cladding with versatility, durability, and cost-effectiveness. Its bold trapezoidal ribs, wider coverage, and long spanning capability make installation quick and efficient. Experience reliable performance and cost savings with fewer sheets required. Enhance your building with LYSAGHT® SPANDEK OPTIMA™ for form and function in one solution.



Learn More



NS BlueScope Lysaght Sarawak Sdn Bhd



+6082-333621



Lysaght Malaysia



**TOTAL COATING & CONSTRUCTION SOLUTIONS**

## ONE-STOP ANTI-PATCHINESS INTERNAL SYSTEM

Compatible Interior System Solution from Bare to Finish.

Find Out More!

Scan here to watch video



Contact our Professional Division at **1-800-88-2663** or visit **professional.nipponpaint.com.my**

