

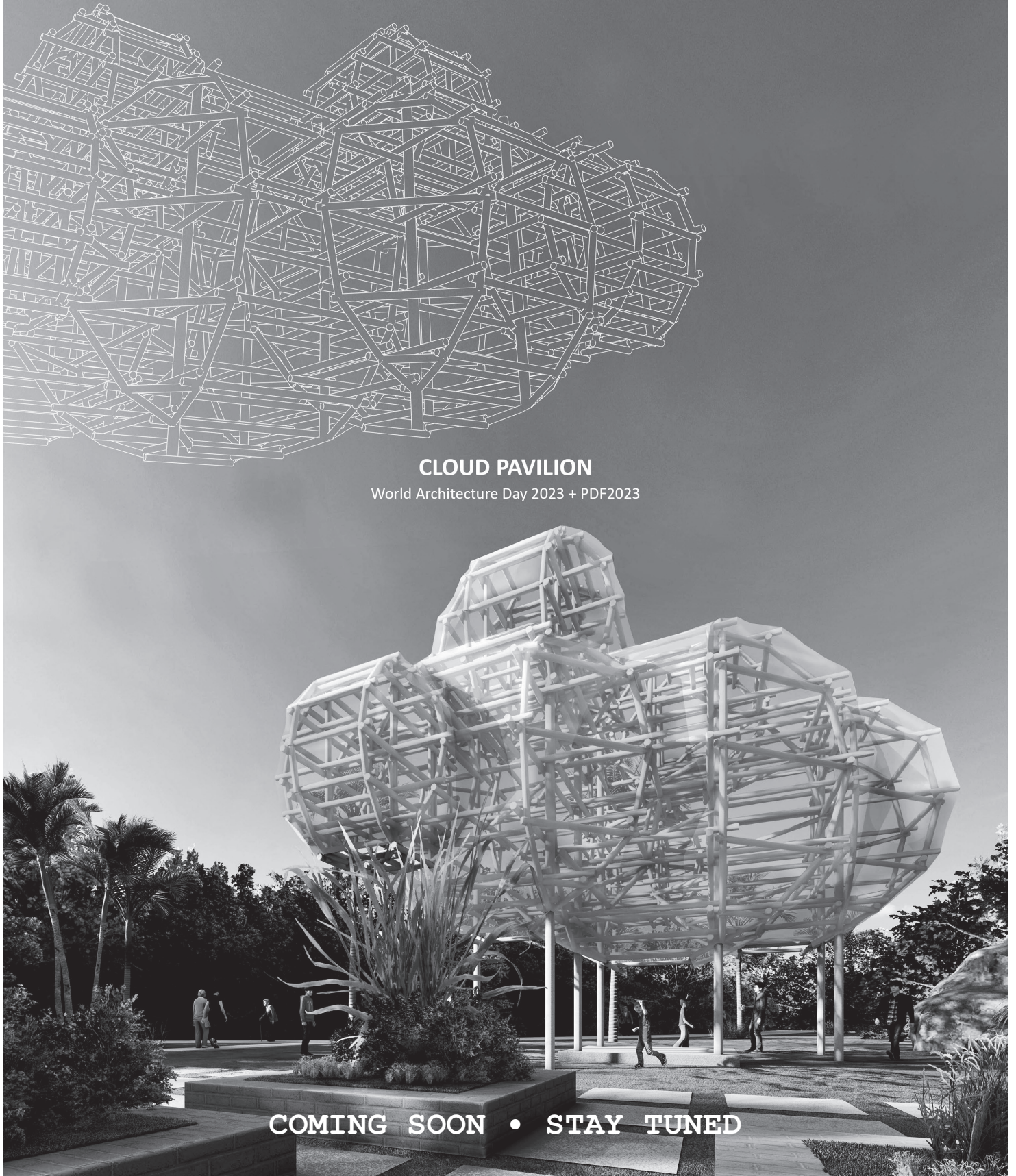
INTERSECTION NEWS

PAMSC Circular 38

Term 2023-2024 27th Oct 2023

PPK469/01/2017 (034673)

News+FLASH is the digital offspring of INTERSECTION. It is published digitally each fortnight for the foreseeable future, until we run out of ideas, articles or money.



CLOUD PAVILION

World Architecture Day 2023 + PDF2023

COMING SOON • STAY TUNED

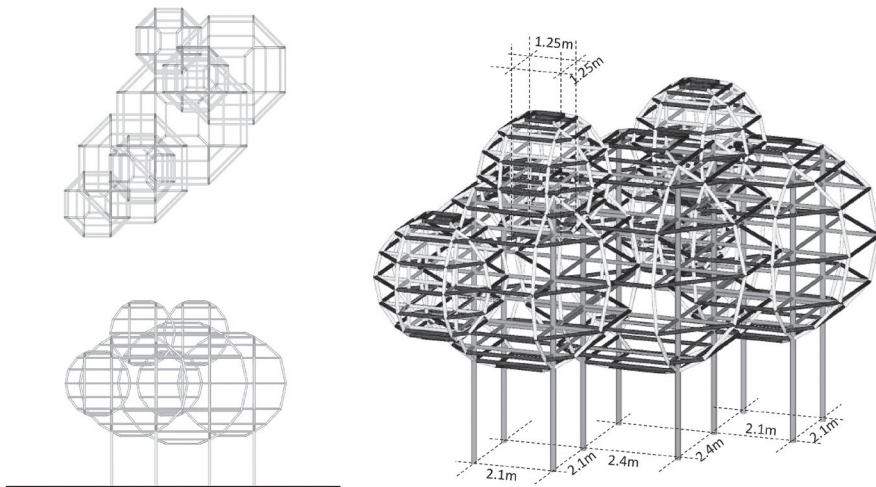
CLOUD PAVILION

Written by Tay Tze Yong

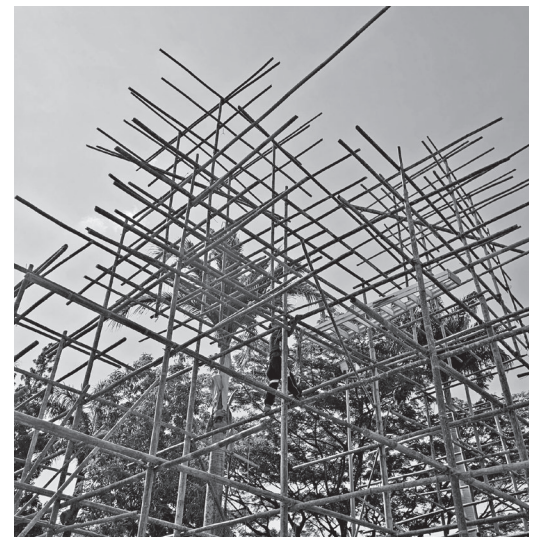
Clouds in nature as a metaphor for collaboration reinforces the idea of interconnections and decentralization, flexibility and scalability. In the digital age, it highlights the ways in which technology allows people to work together seamlessly, regardless of physical distance - like how water molecules come together to form clouds in the sky. This year, in celebration of World Architecture Day and as part of the PAMSC Design Festival 2023 (PDF2023), we are excited to present the Cloud Pavilion, which aligns seamlessly with the themes of 'Architecture for a Resilient Community' (WAD2023) and 'Redefining Practice' (PDF2023). This installation marks a continuous evolution from our previous Moon Pavilion project, and is a testament to our commitment to fostering public engagement and promoting urban resilience through art and design installations.

The Cloud Pavilion construction is currently in progress, and we invite all members to visit and participate in this on-site experience. Don't forget to document your visit by capturing photographs as proof of your attendance, which may earn you CPD points (subject to LAM approval). To submit evidence of your on-site presence, please send your name along with the photographs to [+60109787010](https://api.whatsapp.com/send?phone=60109787010) via WhatsApp. We look forward to seeing you at the Cloud Pavilion!

INTODESIGN Lab



The bamboo was harvested from Puncak Borneo and is currently being installed by their local community.



SIBU ENGINEERED WOOD PRODUCTS WORKSHOP 2023

Contributed by Ar. Brendan Tong



Participants listening.

As part of the Post COVID - 19 Development Strategy (PCDS) currently spearheaded by the state government, the Sarawak Wood Industry Development Corporation (PUSAKA) has been actively promoting the growth of the Sarawak Engineered Wood production industry. On the 4th of October 2023, PAMSC was invited to one of their staple annual initiatives, which was a workshop held at Premier Hotel SibU. The workshop aimed to increase the awareness and understanding of the government sectors, construction consultants, industrial stakeholders, and interested investors in the engineered wood product industry of Sarawak.

Encik Awang Mentali Awang Mohammed of the Sarawak Timber Industry Development Corporation (STIDC) started off the day by presenting the PCDS visions for the timber, forestry and engineered wood industries. He then elaborated on STIDC's initiatives to realise these visions, which included the promotion of investment, benchmarking, research and development, and developing a state wide network for information sharing.

Professor Dr. Zakiah Ahmad of University of Technology Malaysia (UTM) followed up with a presentation on the types of engineered wood products common to the state, in particular the various types of Glulam (GLT) and structural wood (SCL) products, as well as their applications in the construction industry.

Representatives of PUSAKA concluded the workshop with a presentation on sustainable forest plantation management, which detailed the practice, progress and achievement of Sarawak's forest plantation industry, and the role it plays to ensure that the wood used to produce engineered wood remains sustainable and renewable.

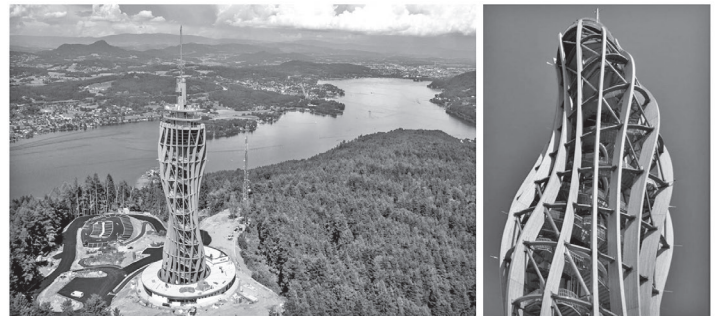


Speakers engaging in Q&A.

We provide herewith some snippets and trivia from the workshop:

1. Engineered wood can be tailored to suit structural and aesthetic requirements

The manipulation and mechanization of the product properties allow some engineered wood products to function as either load bearing or aesthetic elements, or both. In contrast to more mainstream construction materials like concrete and steel, architects and engineers find engineered wood to be flexible and bespoke in application, and are able to manipulate and dictate their required properties and capabilities for the products during its production stage, thereby tailoring the material to be specific to their design requirements. This leads to the creation of architecture like the Pyramidenkogel Observation tower in Klagenfurt, Austria, and the Cebu Mactan Airport in Lapu - Lapu City, Phillipines.



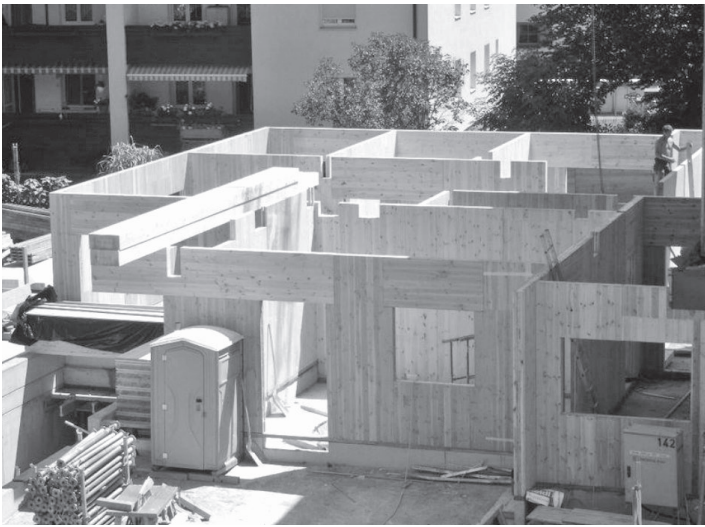
Pyramidenkogel.



Cebu Mactan Airport.

2. Engineered wood has a more flexible application in construction

The primary flexibility that engineered wood can provide in construction is its ability to be modified during construction and installation. In typical projects, the most common wastage and loss of time occurs when variation is required during construction. This tends to be a tedious process for concrete and steel construction, and sometimes require large scale modifications to be carried out in order to avoid compromising the structural integrity of the building. The modularity and load distribution efficiency of wood structures allow for a "cut and shape" solution for some changes in design and / or modifications to resolve fit and finish inconsistencies. This dramatically reduce downtimes caused by such variations, and provides more liberty to onsite engineers and designers to make ad-hoc changes.



Zillertal hotel.



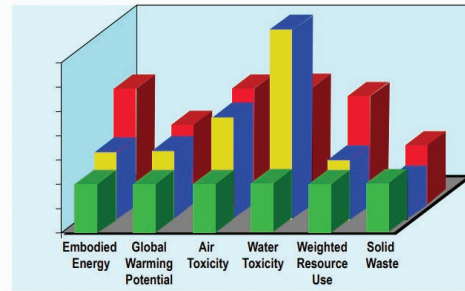
Inzell Ice Rink Stadium.

3. Engineered wood is sustainable

The engineered wood produced in Sarawak originated from approximately 3 million hectares of licensed forest plantations in the state. The plantations are certified and audited by PUSAKA to ensure that they are managed and harvested in an environmental friendly manner. Majority of the trees planted are Acacia trees, which have high sequestration capability (the ability to capture and store carbon from the atmosphere). The low carbon fabrication process for engineered wood makes it carbon neutral, with the carbon dioxide emission from its fabrication achieving a -101 rating, in contrast to steel's 76, concrete's 101, and aluminium's 327 ratings. In addition, it requires the least energy consumption in its fabrication, with a 1 megajoule per kilogram average consumption against concrete's 4 megajoules, steel's 60 megajoules and aluminum's 130 megajoules. In developed countries, engineered wood products are typically used for 60 to 90 years as shelter systems, before being downcycled as furniture for an additional 20 to 40 years of usage.

On behalf of PAMSC, I would like to congratulate PUSAKA for carrying out the successful workshop, and to thank them for inviting us to such an eye opening session.

The Real Measure of Environmental Impact



Comparing wood, steel and concrete in a typical house design:

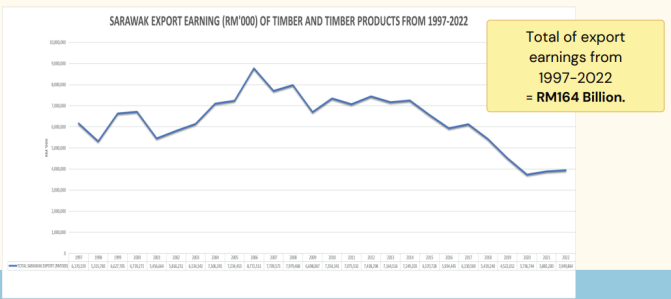
Now we have the means to put out some real numbers on wood's benefits. The software that does these calculations is user-friendly and actually intended for architects, to help them make decisions on material selection. However, the wood industry may find this work most useful in helping get out the message on wood – we can now lay claim to wood's environmental benefits knowing that we have strong technical backup to those claims.

Environmental impact.

4. The biggest concern for the industry is the awareness and involvement in the sector

The timber industry remains associated with negative connotations due to the indiscriminate deforestation practices prevalent during the yesteryears, as well as its presumption as an outdated and short living construction material. This has consequentially led to a decreasing proportion of involvement in labour, investment, innovation and participation in all stages of the industry, and further resulted in gradually insufficient timber supply and products. Both PUSAKA and STIDC endeavour to reverse this trend, and have pledged to conduct more educational and promotional seminars and workshops to increase and improve the awareness and participation in the engineered wood industry. It goes without saying that the greater involvement of Architects in the industry remains a forefront aspiration to them, and they look forward to further knowledge sharing and collaborations with our industry to fast track a healthy adoption of engineered wood in the construction world.

Trend of Export Value (RM'000) of Timber & Timber Products from 1997 - 2022



Trend of export value.

PAMSC Design Festival 2023

DESIGN FORUM
18 NOV (SAT)

Venue: Dewan
Masyarakat MBKS,
Kuching

Moderators



Eric Chen
ArchiBlur Lab

Born in Tainan in 1978 and currently residing and working in Tainan, Taichung, and Taoyuan, Eric Chen holds the PhD degree of Arts from Tainan National University of the Arts, and now he is the full-time assistant professor of Department of Architecture, Chung Yuan Christian University, visiting professor of Department of Architecture, UCSI in Malaysia, and chief architect of ArchiBlur Lab.



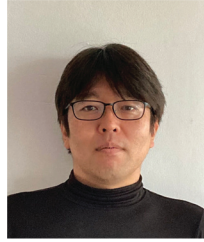
Ar. Tang HsiaoSeak
tangu ARCHITECTURE Sdn Bhd

Tang starting a career in booming Malaysia in the 90's upon graduating, was akin to charting the undiscovered seas of mass development and commercialism. He honed the skills in multiple disciplines from planning and urban design through architecture and interior to installations and product design.

REDEFINING PRACTICE

Architecture practice has evolved in the past decade, this forum seeks to discuss how firms of various sizes are adapting to stay ahead of rapid technological change and other challenges by venturing into new areas of services and practice, beyond the boundaries of traditional practice. Several of our speakers have completed projects abroad and will share their thoughts about collaborative practice.

Keynote Speakers



Nishizawaarchitects is a Vietnamese architecture firm led by **Shunri Nishizawa**. The architect founded the Ho Chi Minh city-based practice in 2015 after working at the offices of Tadao Ando and Vo Trong Nghia.



DDAP Architect is based in Bali, Indonesia and renowned for their ability to create unique designs solutions which is grounded in the natural environment. Their works often reflects local values, and sensitivity towards the environment. **Ketut Dirgantara** is the principal at DDAP. After graduating from ITB, he worked as a senior architect at an urban planning consultant in Singapore before starting DDAP in 2015.



Sheng-Feng Lin is an associate professor at Shih Chien University and the founder of Atelier Or. He received his Master of Architecture from Cranbrook Academy of Art. In 2018, as the recipient of Outstanding Award in Taiwan Landscape Architecture Award, and Honorable Mention for Taiwan Architecture Award, Lin is recognized for his cross-disciplinary works in architecture, landscape, and exhibition design.



KIRK was established in Brisbane, Australia in 1995 as **Richard Kirk Architect**. KIRK's purpose is to create enduring, memorable and responsible architecture. Using advanced building technologies, the studio delivers crafted works that advance sustainable development goals, recognising that designs need to look beyond the brief and respond to a range of futures.



Emergent Voices



Chiao Hui Thien
nettleontribe architects



Tze Hui Goh
Arkitek JFN Sdn Bhd

6 CPD POINTS APPLIED

Organiser:



Premium Sponsor:



Supported by:



Industry Partners:



SCAN TO REGISTER



PDF2023 DESIGN FORUM :
INTRODUCTION OF SPEAKERS 3/6 & 4/6

As a run up to our PDF2023 Design Forum, we will be introducing our speakers over the next few issues of NEWS and FLASH - this is our third and fourth speakers: Sheng-Feng Lin from Taipei and Shunri Nishizawa from NISHIZAWAARCHITECTS, Ho Chi Minh City.

18th
NOV



Sparkling Market.



Sheng-Feng Lin

Sheng-Feng Lin is an associate professor at Shih Chien University and the founder of Atelier Or. He received his Master of Architecture from Cranbrook Academy of Art. In 2018, as the recipient of Outstanding Award in Taiwan Landscape Architecture Award, and Honorable Mention for Taiwan Architecture Award, Lin is recognized for his cross-disciplinary works in architecture, landscape, and exhibition design.



Sparkling Market.



Pavilion for Hsinchu Bus Station Plaza.



House and Valley.



Shunri Nishizawa was born in 1980 in Tokyo. He obtained his B.Arch (2003) and M.Arch (2005) from Tokyo University.

He worked from 2005 to 2009 for Tadao Ando Architect & Associates (Osaka). From 2009 to 2011 he was a Partner in Vo Trong Nghia Architects, Ho Chi Minh. Between 2011 and 2015, he was in Sanuki+Nishizawa Architects before founding NISHIZAWAARCHITECTS in 2015.

His works includes the Binh Thanh House (with Vo Trong Nghia Architects, Ho Chi Minh, 2013); Thong House (Saigon, 2014); Katzden Factory (Binh Duong City, 2016); House in Chau Doc (2017); Ben Thanh Restaurant (Ho Chi Minh City, 2017); Restaurant of Shade (2018); House and valley (2023); House in Shuzenji (2023), Textile Office (2023).

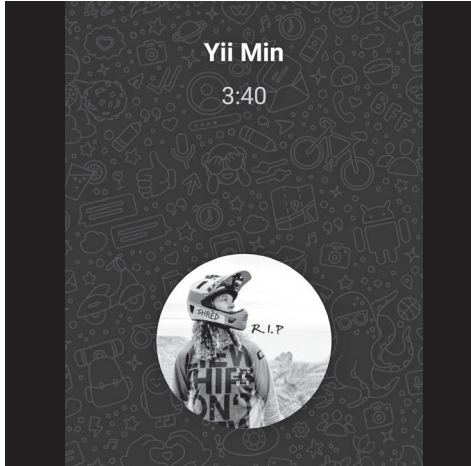
He has lectured at numbers of schools and cultural institutions, such as NUS (National University of Singapore) in 2017, KLAF (Kuala Lumpur Architecture Festival) in 2018 and AALTO University and Museum of Finnish architecture : "Architecture Speaks!" in 2018.

He started teaching at Shiga Prefectural University (Japan) from 2023.

WHAT DO ARCHITECTS DO ALL DAY?

This section attempts to sum up the architects' busy day in a series of snapshots - this is Lau Chee Kiong's contribution this issue. For the next issue.

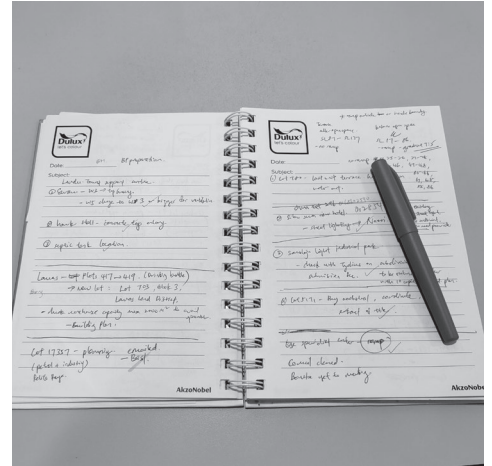
Our readers are invited to submit their 'day's experiences' as well - email to intersection.editorial@gmail.com



6:00am - Sharing by soulmate from NZ.



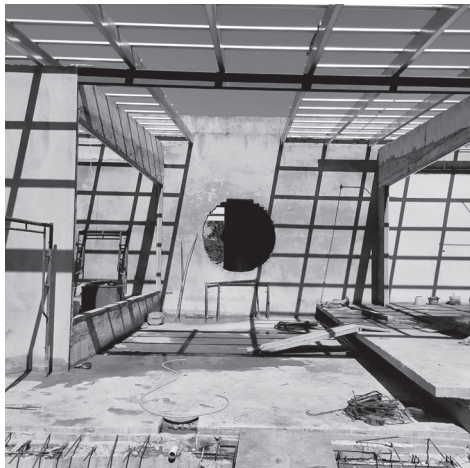
7:30am - Kolo mee.



8:30am - Organize office work.



12:00pm - Discussion with consultant.



3:00pm - Site walk.



6:30pm - Traffic jam.



7:00pm - Oreo time.



7:30pm - Enjoy wife's cooking.



8:30pm - Revision.

YOU ARE WHAT YOU READ

by Min



I acquired a library last Friday.

About a thousand books and some magazines, from a practice that was winding down. To my surprise, the remaining staff did not want the books, and expressed surprise that someone would want them enough to buy them lock, stock and barrel. *'The books are old, and there are not that many about architecture.'*

True enough, there were more books on politics, memoirs, books about local culture and history, about flora and fauna, there were novels and scientific journals, how-to guides to water-colour, photography and Photo-shop. To be fair to his colleagues, this was his personal library lining the four walls that was his 10' by 12' office. Though I am sure that the generous person and teacher that he was, he would have marked pages of interest to share with his staff; to point out a detail, to re-tell an amusing story or to mark a story to re-read later on.

True enough, we found many home-made book marks in the books while we sorted them and put in boxes for transportation. Business cards, strips of old greeting cards, Ringgit notes, and photographs marking where he paused; end of a long car ride, the beginning of dinner, bed-time or boredom. The family is glad that someone would treasure them and keep them in one place - the books that shaped the man he was.

My young helpers were not packing fast enough, they were looking through the books instead of packing them. They are setting some aside *'to look through later*

in the office'. I was quietly pleased because few of us continue to read after finishing university (even then the reading was based on prescribed texts to write assignment and pass exams), even fewer read for fun and those of us who continue to read often stay within the *'tracks'* of our profession.

You are what you eat, likewise we are what read - once in a while it is good to add colour to what might be an unbalanced or inadequate diet.

Read:

Fiction - architects are working even when they are not; solving a detail, framing a reply to a contractual situation. Fiction offers a respite, it teaches us about human nature, improves our phrasing while *'escaping'* for a hour.

Classics - get to know the book that was made into a film, learn how Sir Arthur Conan Doyle is related to Robert Downey Jr.

Poetry - learn about the distillation of language to paint a scene in a few lines; minimalism.

Biographies - are written by or about people who have succeeded in some way, learn about their journey and failures. It is similar to reading about the design process which results in the design outcome/product.

History - without which, it is difficult to base many of our design theories and ideas on. History does not have to start 3,000 years ago, it can be from the birth of a nation.

Old books - I have a fondness for old books, I can't explain why. Perhaps it is the notes in the margins, the inscriptions on the inside flap or the random bookmarks. Perhaps it is the sense of handing down, and the continuation of an inheritance. With this new library, I have a chance to experience all of the above.

Moreover, I am able to dip into the collection and have pot luck; dine outside my usual food-groups and learn more about the man who gifted me his books. What more can I ask for?

END

PDF 2023

networking & members' night



PAM
Pertubuhan Akitek
Malaysia
Sarawak Chapter

17.11.23
friday

7 - 10pm
MBKS Hall B

FREE Admission for PAM Members,
Design Forum participants &
staffs of PAM Member's Firm
Non-member - RM350.00

Scan to register



Closing Date for Registration:
10th November 2023, Friday



PARTNERS

