

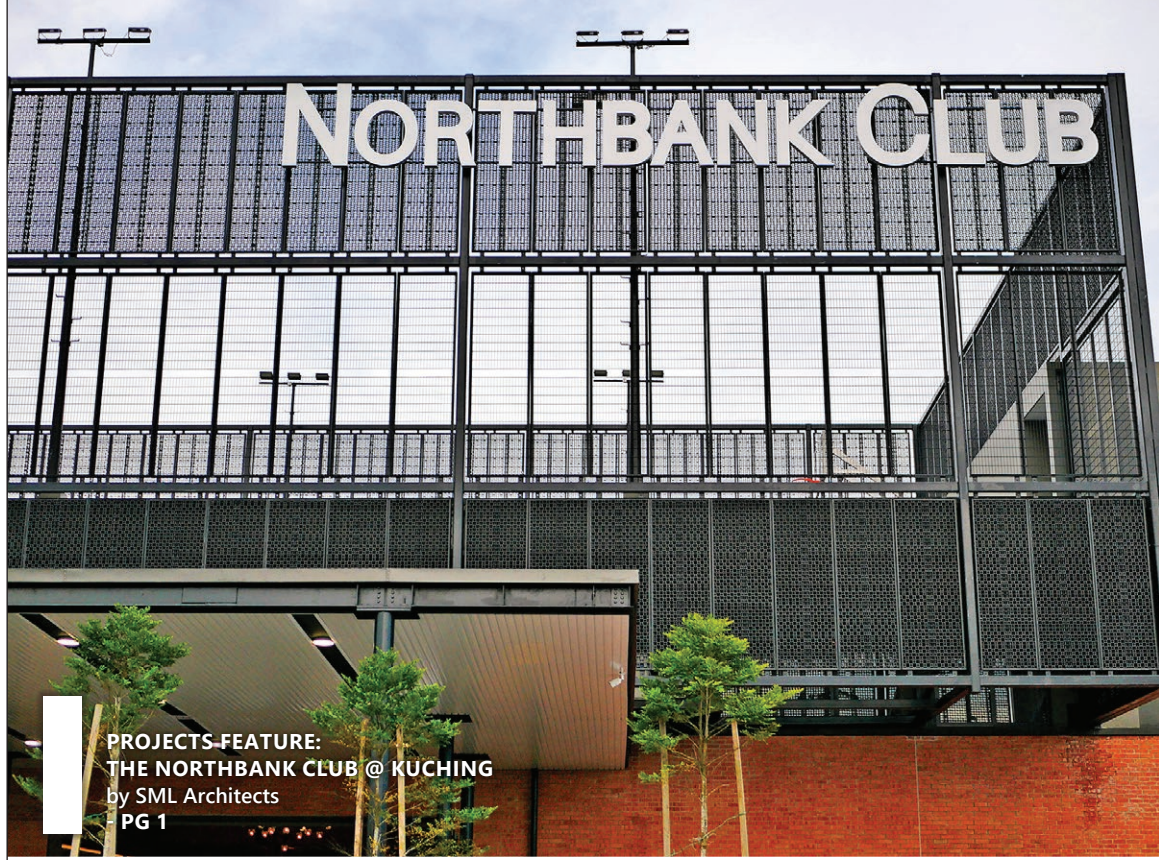
Term 2023-2024 13th Oct 2023
PPK469/01/2017(034673)

News+FLASH is the digital offspring of INTERSECTION. It is published digitally each fortnight for the foreseeable future, until we run out of ideas, articles or money.

ALSO
IN THIS ISSUE :

PDF2023 DESIGN FORUM
: INTRODUCTION OF
SPEAKERS 2/6

RICHARD KIRK : KIRK,
BRISBANE. AUSTRALIA



1 PROJECTS-FEATURE:
THE NORTHBANK CLUB @ KUCHING
by SML Architects
- PG 1



2 PROJECTS FEATURE:
ZAABA EXPERIENTIAL CENTRE @ KUALA LUMPUR
by tangu ARCHITECTURE Sdn Bhd
- PG 5



3 SMALL PROJECTS FEATURE:
GAWAI ANTU
by INTODESIGN Lab
- PG 9



An austere and solid fair-faced brick wall defines the public side of the complex and draws one in through the main entrance where the private and informal realm is unveiled.

THE NORTHBANK CLUB @ KUCHING

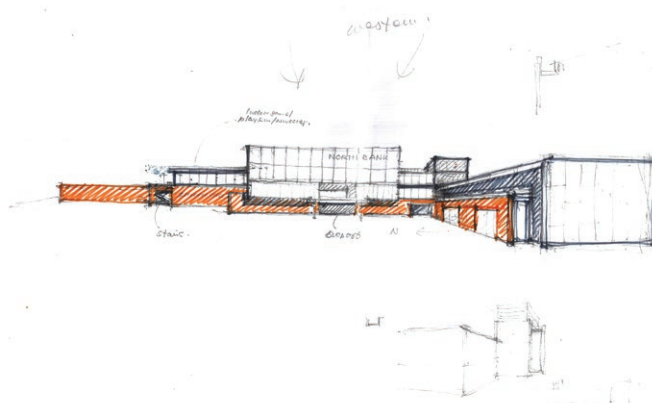
by SML Architects

ARCHITECT'S STATEMENT

The proposed private clubhouse is located in the heart of an upcoming and upmarket mixed development. The site, a long and narrow piece of land of about 1.7 acres is located at the confluence of Sungai Niada and a linear park that has been incorporated into the development master plan. The main role of the clubhouse is to serve the recreational needs of future residents in the vicinity.

The brief called for various F&B, recreational and sports facilities, i.e. a 50 m lap pool, badminton courts, and a multi-court to be fitted into a very tight site. Hence, the design solution was to lift the main bulk of the sports facilities, i.e. the multi-court and badminton courts off the ground. This frees up Level 1 to be a series of free-flowing public spaces in between glazed recreational facilities and a series of staggered facing brick walls. These create a sense of movement. They also define vistas and blur the distinction between the inside and outside.

The multi-court forms the roof over two floors of recreational, administrative and F&B facilities at the front block. A 12 m high rectilinear steel frame with drainage cell and versatile fencing infills wraps around the block and has the appearance of being perched lightly on the facing brick walls below. Nearby, a more solid rectilinear block which houses the badminton courts echoes the main steel frame and completes the cubist architectural composition of the scheme.

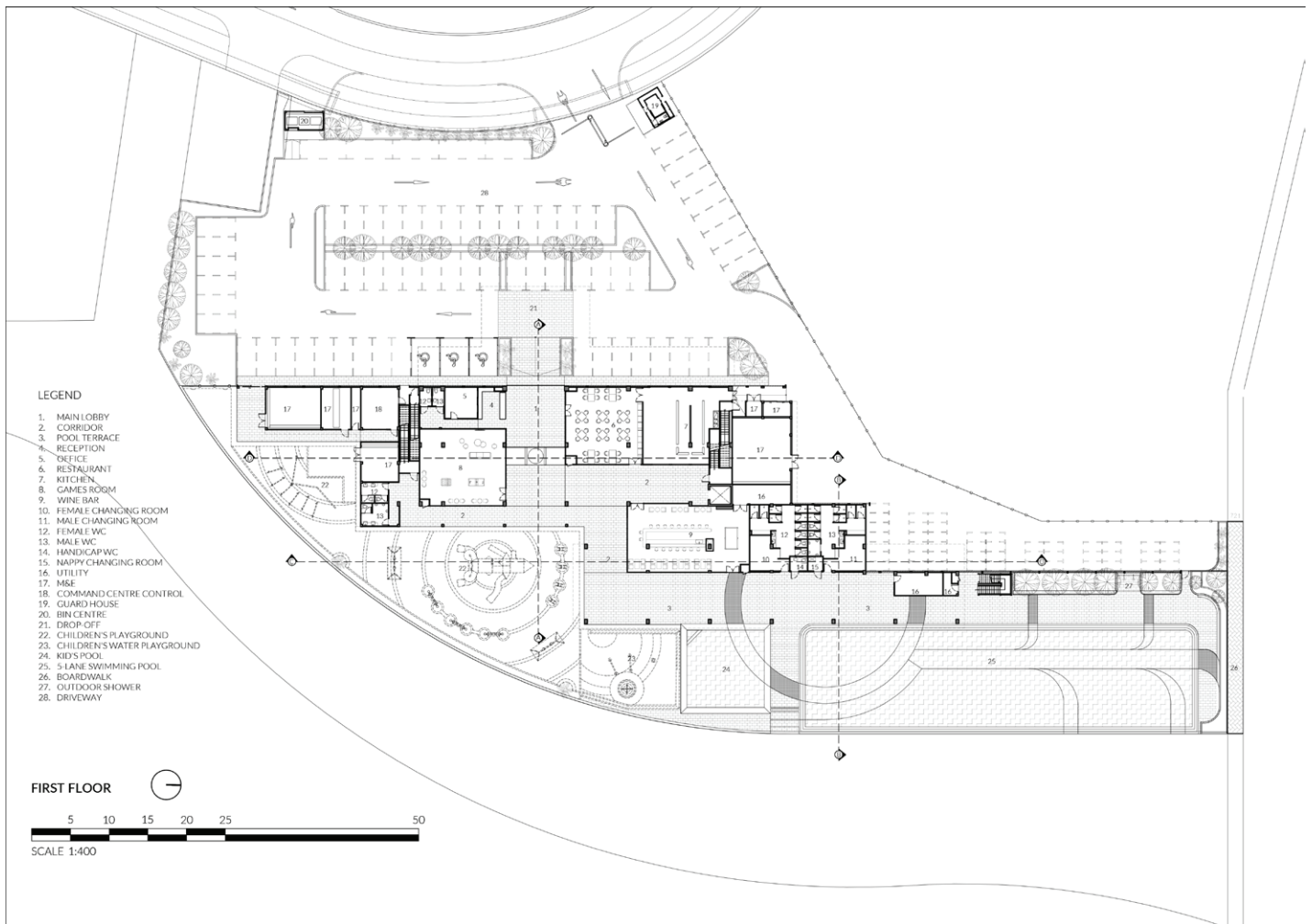


Initial sketch of The Northbank Club.



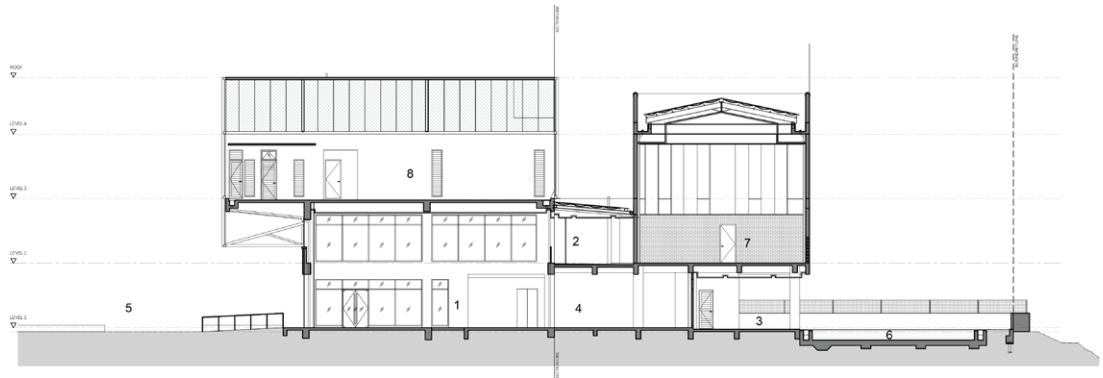
Physical model showing the rooftop multi-court.

END



- LEGEND**
1. MAIN LOBBY
 2. CORRIDOR
 3. POOL TERRACE
 4. GAMES ROOM
 5. DROP-OFF
 6. KID'S POOL
 7. INDOOR BADMINTON HALL
 8. OUTDOOR MULTI COURT

SECTION A-A



- LEGEND**
1. POOL TERRACE
 2. GAMES ROOM
 3. MALE CHANGING ROOM
 4. MALE WC
 5. 5-LANE SWIMMING POOL
 6. INDOOR BADMINTON HALL

SECTION B-B



Client	: Ibraco Berhad	Quantity Surveyor	: FCH Quantity Surveyors Sdn. Bhd.
Architect	: SML Architects	Interior Designer	: Motto Designs Sdn. Bhd.
C&S Engineer	: Jurutera Perunding Sedia	Design Team	: Leong Gian Wen, Arlene Chew, Mark Eng
M&E Engineer	: Perunding WES Sdn. Bhd.	Photography	: Mark Eng, Sean Wee, Melvin Chan
Landscape Architect	: Earthscape Inhabitant Sdn. Bhd.		



Steel frames for the outdoor multi-court.



Construction of the enclosure of the rooftop outdoor multi-court.



Construction in progress.



The Badminton Hall hovers above the pool deck flanking the swimming pool.



Main entrance and lobby.



The main entrance-cum-lobby is a double-storey space that unveils the various facilities housed in the complex.



Al fresco dining area and pool deck overlooking the pools.



Outdoor play facilities.



The rooftop Outdoor Multicourt acts as the 'fifth' elevation.



The facilities are expressed as two rectilinear blocks perched lightly on a series of linear fair-faced brick walls.



ZAABA EXPERIENTIAL CENTRE @ KUALA LUMPUR

by tangu ARCHITECTURE Sdn Bhd

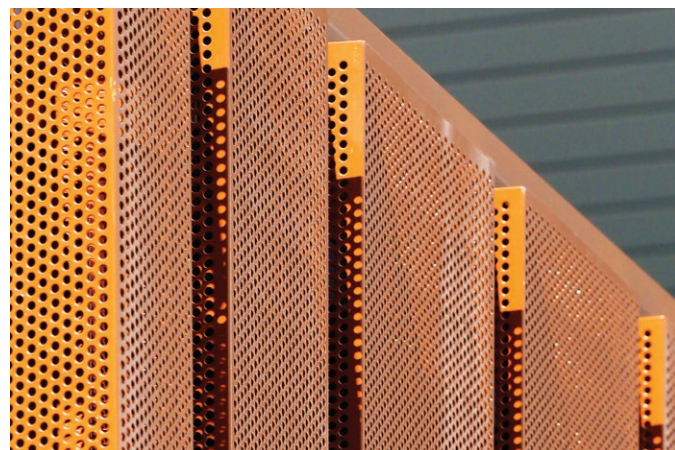
ARCHITECT'S STATEMENT

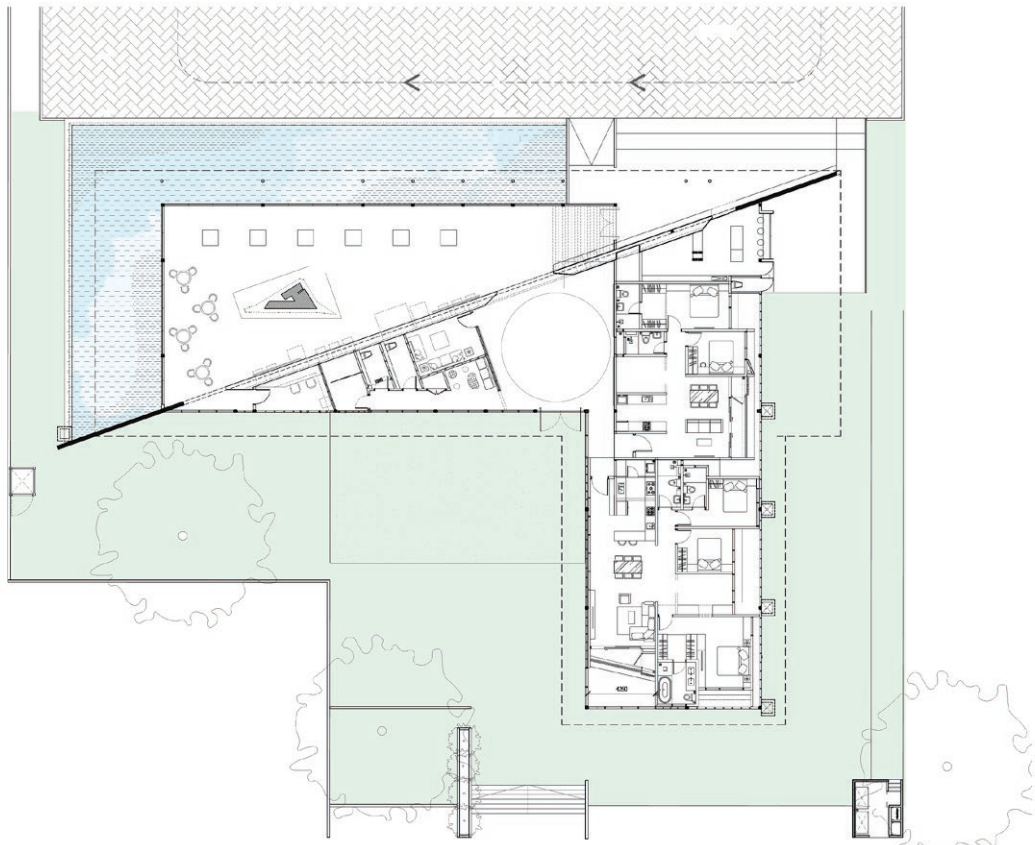
Zaaba Experiential Centre is built with the intent of goes beyond a typical sales gallery by creating a memorable, engaging and informative experience for visitors and potential buyers. It's a response to the changing preference of consumers who seek more than just sales pitch when making a decision. This modern and innovative approach hoping to make a lasting impression and building strong connection with visitors by creating an interactive environment.

The design approach stems from a minimalistic standpoint that "lightness" - of building footprint and massing articulation, construction / materials and site response - applied through well considered design of the spatial configuration, envelope and form. Response to environment, a glass pavilion carefully and thoughtfully placed in response to preserved existing trees, with a majestic canopy tree as a backdrop, to create a harmonious and captivating architectural experience.

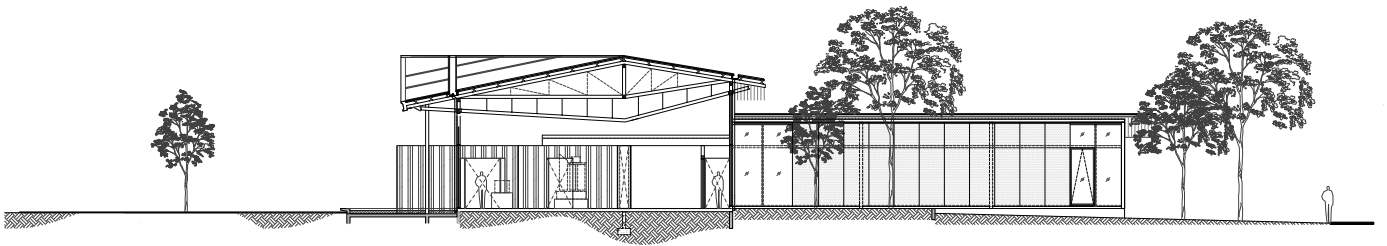
A glass pavilion is an exercise of transparency, "*manifesting a maximum exposure with minimal environment impact*". As a design idea, the glass pavilion trace a form that resembles a stylist depiction of a pyramid. The pavilion is formed as a light lantern structure to provide a visual contrast to disorderly street, as a venue for experiential gallery and arts events.

Steel members is fitting together, engineered folding roof geometry is shaped progressively. It is the time when two-dimensional drawings take on a three-dimensional shape. Elaborated engineered folding roof system, which appears to float above the glass pavilion. The underside of the roof is an inverted pyramid ceiling clad in reflective metal strip, can be lit up at night to suggest a poetic-shaped form hovering above the singular event space. During the day the lenses inject varying qualities light into the gallery, while at night the sculptured pavilion structure glows with their internal light.

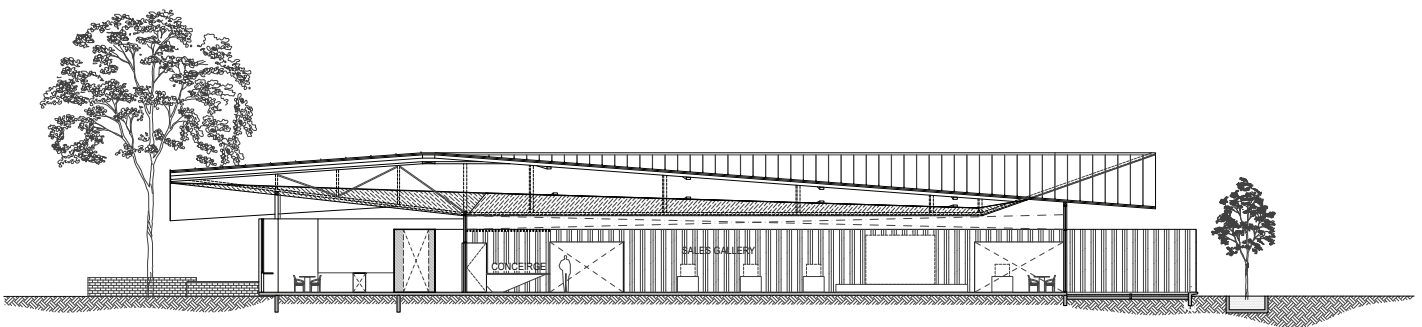




Ground Floor Plan



SECTION | A
SCALE: 1:100



SECTION | B
SCALE: 1:100

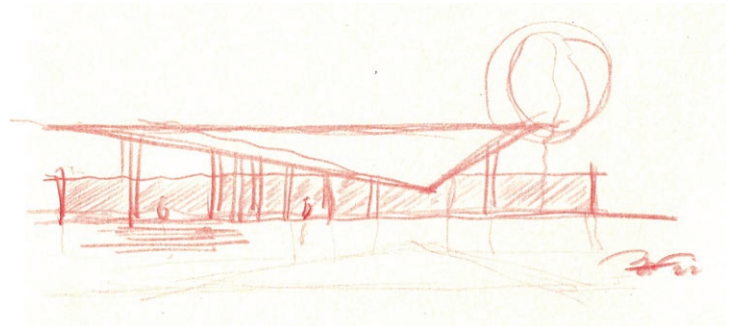
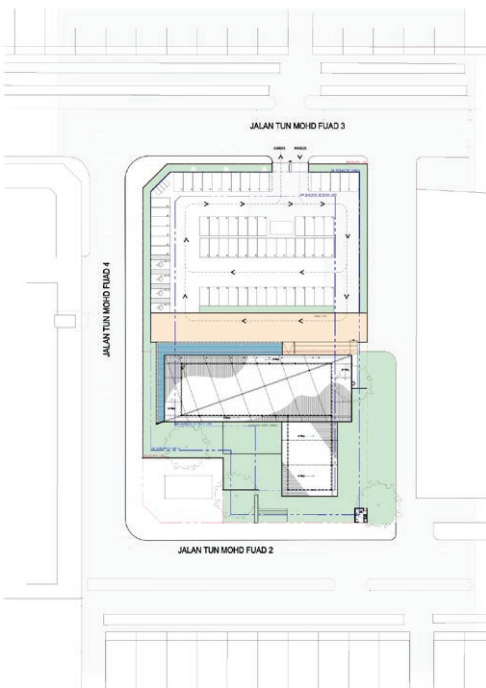


CONSTRUCTION PHOTOS

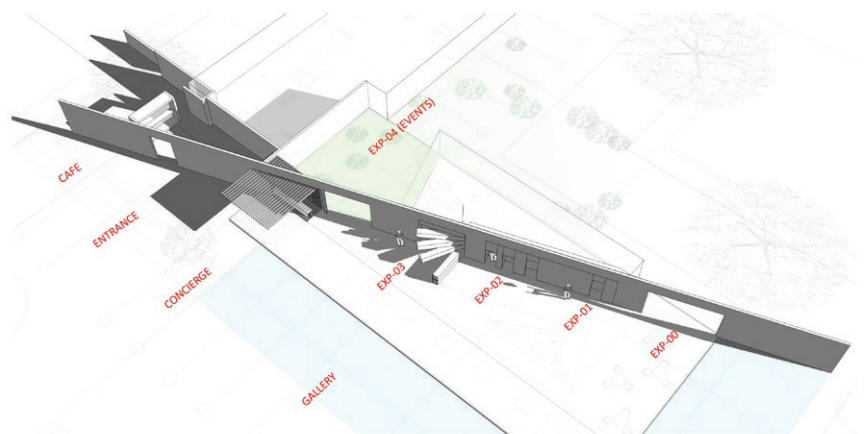


A glass pavilion with a pitched roof can create a stunning and contemporary architectural structure. The combination of glass and a pitched roof allows for ample natural light, a sense of spaciousness, and an aesthetic that seamlessly blends with the surrounding environment. Meanwhile, an interactive feature wall has been introduced and seamlessly integrates with the design of glass pavilion. The perforated copper bronze aluminium panel feature wall sliced through glass pavilion diagonally, separating back of house spaces while standing as stunning backdrop wall of gallery spaces. The feature wall has complement the architecture without obstructing views or causing visual clutter.

The interactive feature wall served multiple purposes, from providing information and entertainment to creating an immersive experience for visitors. It is then engage multiple senses by incorporate sound touch, and even scent that relevant to the centre's theme. Overall, the interactive feature wall is a powerful tool for conveying the unique selling points and the overall vision of the development in experiential centre. Its also complements other elements within the Experiential Centre, such as physical models, architectural displays, and community engagement initiatives.



Design sketch - articulation



Interactive feature wall diagram



Large reflective pond has been incorporating at the main entrance of the gallery, create sense of arrival and welcoming atmosphere. It does set a positive tone for visitors, creating a sense of calm, beauty, and sophistication. It serves as a focal point and an inviting space that encourage people to linger, explore, and engage with the Experiential Centre. This reflective pond that edging the glass pavilion indeed create a stunning contemporary architectural approach. The interplay between water and glass can enhance the aesthetic appeal, create a sense of tranquility, and provide several functional and visual benefits. At night, magical nighttime ambiance of Experiential Centre where the glass pavilion's reflection on the pond becomes a breathtaking and memorable part of architectural experience, enchanting visual effect. It served as a striking focal point and an artistic representation of the pavilion's beauty.



Considering the disorderly street as an inspiration and context that design could respond to. The irregularly spaced columns has been introduced, tried to symbolize or mimic the irregularity of the surroundings. Incorporating disorderly or irregularly spaced columns as a design feature on the front facade of a glass pavilion also create a visually striking and intriguing structure that blends with a disorderly street context. The irregularity has been well thought out to create an aesthetic impact without compromising structural integrity.

Ultimately, the Experiential Centre as a glass pavilion with the aim of making it a landmark and a focal point is an exciting architectural endeavor.



END

Project Name	: Zaaba Experiential Centre
Project Location	: Taman Tun Dr Ismail, TTDI Kuala Lumpur
Year Of Completion	: 2023
Building Area	: Approx. 7,500 Sq.ft
Building Program	: Experiential Gallery, Cafe & Show Units
Architect Firm	: Tangu Architecture Sdn Bhd
Lead Designer	: Ar Steven Ngu Ngie Woon
Associate Designer	: Ar Albert Chua
Photographs	: Steven Ngu



GAWAI ANTU

by INTODESIGN Lab

THE FILM DOCUMENTATION

(Synopsis from the Producer)

Battling the march of modernity, an ancient tribal community in Borneo works to retain its identity and traditions by calling back the dead to reassert the orderly relationship between their world, the human world, and the surrounding jungle. As one of the various ethnic groups in Borneo, the island's Iban have their own language, values and a rich cultural heritage that has been compared to legendary Greek mythology. They are known as a feared jungle tribe hunting heads to display courage and exact revenge on enemies as they fought to claim a tropical jungle territory they could call home. The orderly relationship between the human world, the world of the dead, and Borneo's jungle lies at the core of Iban existence. But as generations now drift into modern city life, the Jabu family is returning to their communal longhouse to reassert a revered tradition - a three day festival of homage to call the dead back and reaffirm their relationship with the living. Gawai Antu will involve a year of planning and draw tribal members in their thousands to the Iban's remote jungle homeland to recall the spirits of the dead in a ritual so complex and powerful most will experience it only once in a lifetime. In a modern world, Gawai Antu- "The Festival of the Ghosts" is a rare affirmation of ancient tribal identity and unity, as the spirits of the ancestors are called to defy the modern erosion of tribal identity and once more bind new generations behind the Iban mind and spirit.

Client	: Jabu Family in collaboration with Borneo Cultures Museum
Designed by	: INTODESIGN Lab
Project Team	: Tay Tze Yong, Lam Choi Suan, Sim Siok Pheng, Wong Jun Xiang, Yong Chin Hee, Lim Guo Kai
Contractor	: Absolute Cool Event
Photographer	: INTODESIGN Lab



CAPTIONS:

1. The Ruai - a bamboo screen defines and seamlessly connects three distinct spaces: The Ngempi, Garong Basket, and Rugan.
2. The Buah Melanjan and Garong Basket in the backdrop.
3. The Miring ceremony, graced by the presence of Yang Berbahagia Datuk Patinggi Tan Sri (Dr.) Alfred Jabu, his family, community leaders, production and exhibition teams, and guests.
4. Captured moments during the official launch of the documentary and exhibition, officiated by the Premier.

THE EXHIBITION

This exhibition, hosted at the Borneo Cultures Museum, is a collaborative effort prompted by an invitation from the Jabu Family in August last year. The exhibition seeks to introduce visitors in the immersive world of Gawai Antu Film Documentation—a comprehensive documentary by the Jabu Family and Image Farm Productions Sdn. Bhd. over the course of a year.

Spread over three vibrant days at the Borneo Cultures Museum, this exhibition serves as a lively celebration of the year-long cinematic journey. The exhibition's design is carefully curated to encapsulate the essence of the film documentary. It goes beyond mere artifact display, creating an immersive narrative that breathes life into the story itself. The design of the exhibition is predominantly centered around bamboo, a material of profound spiritual significance in the Gawai Antu ceremony. Bamboo is used for a wide range of purposes, from preparing *Tuak* and weaving to crafting, praying, chanting, food preparation, and offerings. The exhibition space is thoughtfully composed using bamboo screens, creating distinct themed areas in sequence:

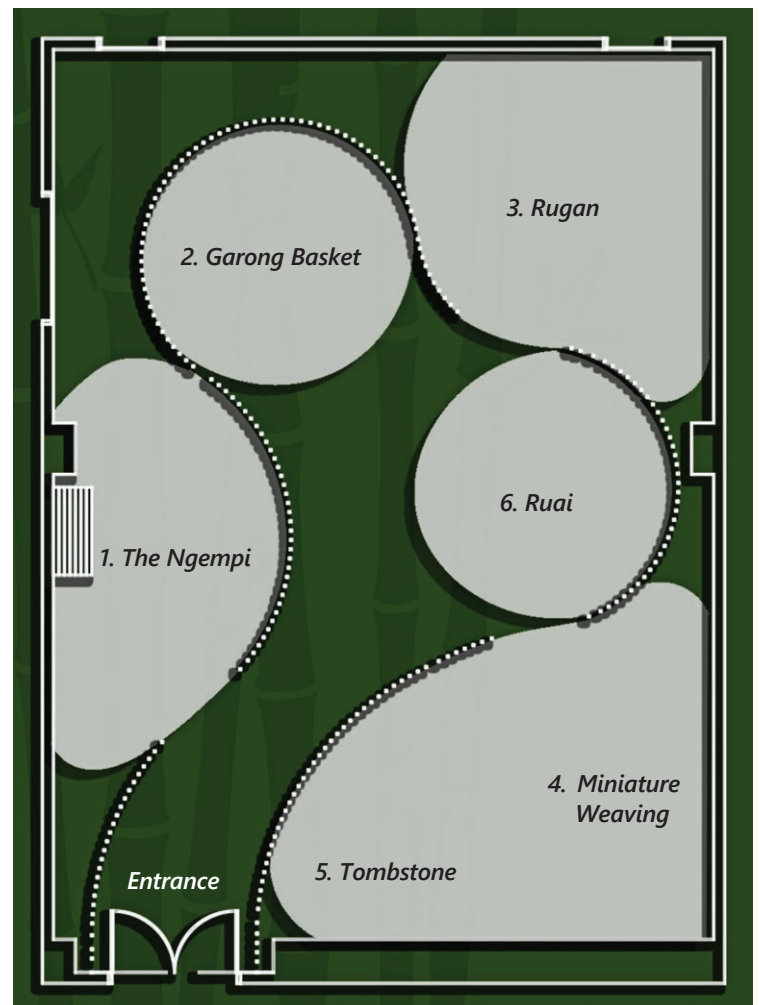
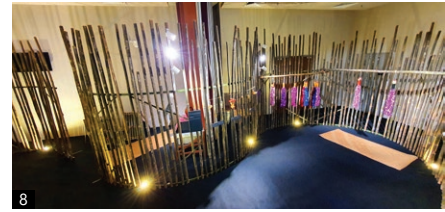
1. **"The Ngempi"** - This section focuses on the making of *Tuak Indai Billai*, where glutinous rice and *Ragi* are fermented and transformed into *Ai Tuak Indai Billai* under the guidance of experienced individuals.
2. **"Garong Basket"** - In this area, miniature woven baskets symbolize the status of the deceased, skillfully crafted by accomplished women weavers.
3. **"Rugan"** - A bamboo structure that signifies the beginning of the Gawai Antu celebration and is erected at the *Ruai*.
4. **"Miniature Weaving"** - This section displays small, everyday items that are also offered to the departed.
5. **"Tombstone"** - All the items woven during Gawai Antu are hung under the *Sungkup*, which is the shed protecting the tomb from the weather.

The exhibition comprises a series of interconnected rooms of the above, with bamboo walls playing a crucial role in connecting the spaces and mirroring the ambiance of an Iban longhouse. The atmosphere of the Gawai Antu celebration is further enriched by the resonating chants and prayers, accompanying the visual presentation of the film in each room. Overall, the Gawai Antu exhibition acts as a bridge between the past and present, offering insight into the traditions of Gawai Antu and emphasizing the ongoing importance of cultural preservation. It leaves visitors with a deeper understanding of this unique tradition through film and exhibition design.

Text by Tay Tze Yong

CAPTIONS:

- 5 & 6. Transforming a function room into an exhibition space posed a remarkable challenge.
7. The *Rugan* and a projection of the Gawai Antu documentary displayed on the wall.
- 8 & 9. The *Ruai* became a temporary gathering space for guests after the *Miring* ceremony, fostering a warm atmosphere.



Layout plan of the Exhibition Room

PDF2023 DESIGN FORUM : INTRODUCTION OF SPEAKERS 2/6

As a run up to our PDF2023 Design Forum, we will be introducing our speakers over the next few issues of NEWS and FLASH - this is our first speaker: **Richard Kirk from KIRK, Brisbane. AUSTRALIA**



KIRK

Richard Kirk is the Principal Director of KIRK, formerly Richard Kirk Architect, which he established in 1995, after graduating from the University of Queensland in 1991 with first class Honours. Richard's noted academic achievements (QIA Memorial Medal & the Board of Architects Award for Academic Excellence) provide an intellectual basis for the foundation & direction of the practice which now has studios located in Brisbane & Kuala Lumpur.

Richard Kirk established the practice as a leader in design for buildings of cultural significance, on sensitive & important sites, with the majority of its commissions awarded through design competitions. Achievements include the first prize award in design for the University of Queensland's flagship buildings, the Advanced Engineering Building & UQ Business School, Singapore's Nanyang Technological University, Learning Hub North Spine, & the Mon Repos Turtle Centre.

There is great interest in the work of the KIRK practice both nationally and internationally with work published widely. Richard's career was profiled in the book From the Ground Up as one of 20 selected architects in Australia. He has also been selected to speak at key conferences including the 2012 AIA National Conference Experience, Singapore's Green Building Council Conference in 2012, and the PAM Lecture Series in Malaysia in 2013. A project of the practice was also selected as one of only three Australian Architectural practices to be included in the British Councils 2013 Exhibition Atlas of the Unbuilt World.

KIRK is committed to developing and establishing new benchmarks for sustainability in the buildings the practice creates. An example of this is the recently completed Advanced Engineering Building that will set entirely new standards for sustainability in sub-tropical and temperate climates. It is this dedication and development of innovative design, in response to climate, that sets the KIRK apart.



WEATHERBOND[®]

SERIES

Now stronger with

QUARTZ
Technology



Scan to find out more



Formulated with microcrystalline quartz minerals that deliver the strongest, toughest, and hardest paint for your exterior walls.



Keep Clean Technology

Excellent dirt, alkaline, and efflorescence resistance.



Micro Block Technology

Excellent fungus and algae resistance.



Sunblock Technology

Reduces surface temperature.



Colour Care Technology

Ensures longer-lasting colours.



Fibra Technology*

Reinforced with microfibres for maximum durability of the paint film.

*Only on Weatherbond Ultimate

**GET ONE
TODAY!**

ALL-WEATHER WALL CLADDING

"The IKEA Blue coated steel is from our premium high durable **envioSHIELD** series which provides a plethora of benefits when applied to architectural surfaces.



IKEA PASAY CITY MANILA CLADDING BY ASTEEL BV-DEK



+60 82-433 888



enquiries@asteel.com.my



www.asteel.com.my

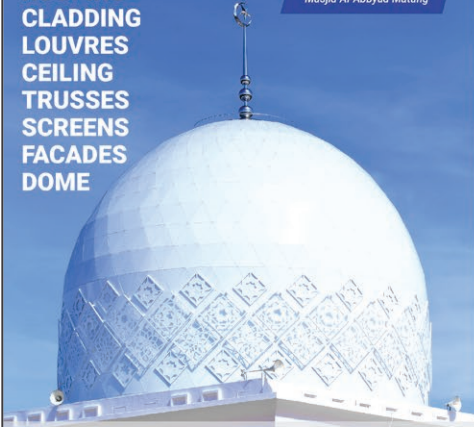


asteelgroupmy

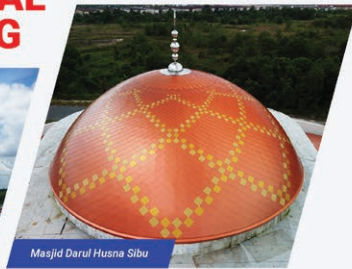
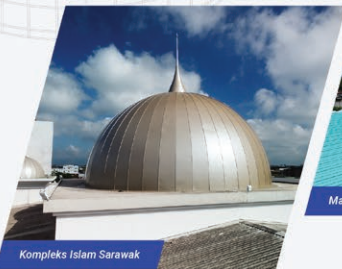


ROOFING
CLADDING
LOUVRES
CEILING
TRUSSES
SCREENS
FACADES
DOME

Masjid Al-Abbyad Matang



DOMES STRUCTURAL & FINISHING



Kuching Tel : +6010-982 0235 / +6082-496336

Bintulu Tel : +6012-852 8712

enquiry@imetal.com.my

www.imetal.com.my

LEADING PORCELAIN & CERAMIC TILE BRAND IN MALAYSIA



Contact us for more information:

KIMGRES MARKETING SDN. BHD.
[Registration No.: 198401001796 (114311-T)]
4 1/2 Mile, Kung Phin Road, Off Penrissen Road,
93250 Kuching, Sarawak.
Tel: +6082-451 567/ 451 017

SIMPLICITE
Light Grey (600x600mm)



@Kimgres



@kimgrestiles



@KimgresTiles

Follow us!



Armstrong Flooring

Maximum flexibility and value for

**Healthcare,
Education, Residential
& offices etc.**



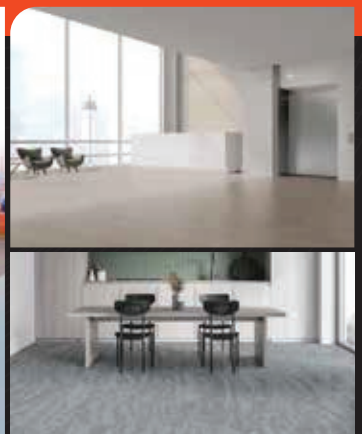
+6082 333 929

+6082 336 929

kenlaw@globalniaga.net

www.globalniaga.net

Lot 1618, Sublot 10, Lorong 6A, Jalan Setia Raja, Muara Tabuan Light Industrial, Phase 2, 93350 Kuching, Sarawak, Malaysia.





SIKA CAR PARK & TRAFFIC COATING

Floor coating systems for parking garages have to meet the highest demands as outdoor, multi-story and underground car parks are subject to many different stresses, including atmospheric conditions, automotive fluids as well as vehicular and pedestrian traffic load.

Main advantages of Sika parking flooring

- High wear resistance
- Dynamic and static crack-bridging properties
- Chemical resistance
- UV stability
- Rapid-curing
- Slip resistance

SIKA KIMIA SDN BHD
Level 3, No. 42, Block C1,
Saradise Kuching,
93350 Kuching, Sarawak

Contact
Phone +6082 288 766
Fax +6082 288 766
www.sika.com.my

BUILDING TRUST



UNILOK®
STEEL ROOF & CLADDING



ONE-STOP CENTRE FOR STEEL ROOFING SOLUTIONS

UGI offers warranty against perforation due to corrosion for your roofing & walling application

UP TO 25 YEARS*

*warranty T&C apply



Certified To MS 2500 : 2012
Certification No.: PC003380

UGI.com.my

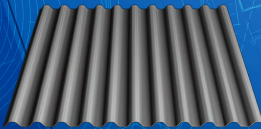
082-439 257

UGIProducts



Colorbond®

LYSAGHT



LYSAGHT® SPANDEK OPTIMA™

The Versatile and Economical Choice for Commercial and Industrial Cladding

Upgrade with LYSAGHT® SPANDEK OPTIMA™ - Advanced cladding with versatility, durability, and cost-effectiveness. Its bold trapezoidal ribs, wider coverage, and long spanning capability make installation quick and efficient. Experience reliable performance and cost savings with fewer sheets required. Enhance your building with LYSAGHT® SPANDEK OPTIMA™ for form and function in one solution.



NS BlueScope Lysaght Sarawak Sdn Bhd

+6082-333621



Lysaght Malaysia

Learn More



ADHESIVES & GROUTS
for ceramic tiles & stone materials



www.mapei.com.my

MAPEI®

ADHESIVES • SEALANTS • CHEMICAL PRODUCTS FOR BUILDING

Follow us on social media
@MapeiMalaysia

