

FLASH

34

Term 2023-2024 8th Sept 2023
PPK469/01/2017(034673)

News+FLASH is the digital offspring of INTERSECTION. It is published digitally each fortnight for the foreseeable future, until we run out of ideas, articles or money.

**ALSO
IN THIS ISSUE :**

KENALI KAMI, PAMSC
Written by SiYong



1 PROJECTS FEATURE:
BORNEO INTERNATIONAL SCHOOL @ KUCHING
by PDC Design Group Sdn Bhd
- PG 1



2 PROJECTS FEATURE:
TAMARIND SQUARE & SUITES @ CYBERJAYA, SELANGOR
by Garis Architects Sdn Bhd
- PG 6



3 PDF2023 DESIGN FORUM : INTRODUCTION OF SPEAKERS 1/6
DIRGATARA DIRGENT : DDAP ARCHITECT, BALI, INDONESIA
- PG 12



BORNEO INTERNATIONAL SCHOOL @ KUCHING

by PDC Design Group Sdn Bhd

ARCHITECT'S STATEMENT

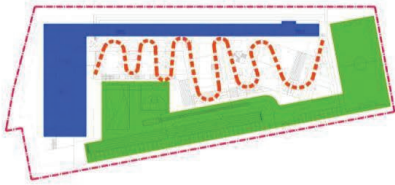
Breaking the Boundaries

Schools are not just places for education; they are the nurturing and inspiring grounds for developing young minds. The way a school is designed is crucial in shaping the learning journey. Unfortunately, due to constraints like cost and time factors, standardized material and building system guidelines, and planning regulations, school design, in general, has become conventional and lost its role in the creation of immersive learning environment. This often leads to unquestioned conformity to typical school building typologies, resulting in less than ideal environment for the students, teachers, parents, or the community. In this project, we aimed to break the boundaries and search for improved outcomes within these constraints.

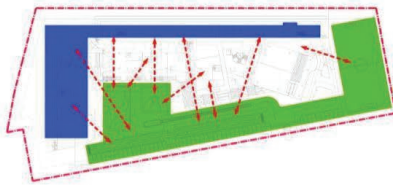
Initially, the heart of the Borneo International School's architectural innovation lies in the concept of the 'Living Street', which combines structured, focused learning with casual, physical and social development. This approach enhances the connection between indoor and outdoor spaces; offering a wide range of spaces for creative interactions, active participation, quiet observation and contemplation. This inclusive approach ensures that the school is not just a place for education, but also for personal growth, creativity, and social development. Despite some constraints, we have managed to keep some 'Living Street' elements intact, avoiding the typical school with 'runway'-style corridors that discourage social interaction. It is our hope that the school management would continue to embrace, expand and implement these creative elements to the benefit of future students, and develop the school into a more vibrant and engaging learning environment.



CONCEPT - PROPOSAL



- A BLEND OF FOCUS LEARNING AND PHYSICAL DEVELOPMENT
- CREATING INTERMEDIATE SPACES TO BRIDGE THE POLARITIES

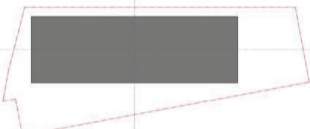


- INCREASE EXPOSURE BETWEEN THE POLARITIES

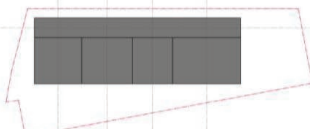


- CREATE PLACES FOR QUIET OBSERVATION & CONTEMPLATION
- ENCOURAGE VARYING DEGREE OF PARTICIPATION, EXPERIMENTATION AND CREATIVE INTERACTIONS

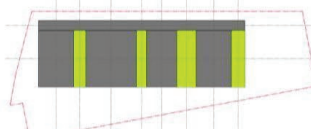
CONCEPT - FORMS



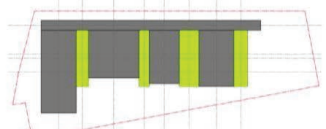
1. Setback & Massing



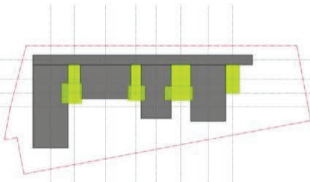
2. Subdivision



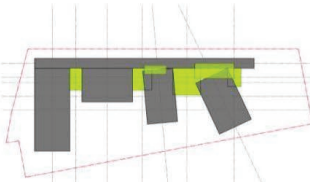
3. View & Air



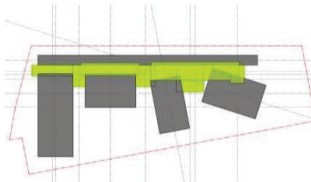
4. Expansion & Contraction



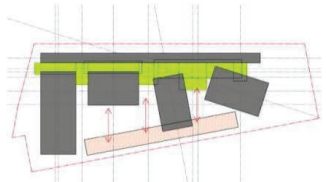
5. Indoor vs. Outdoor



6. Context Adjustment



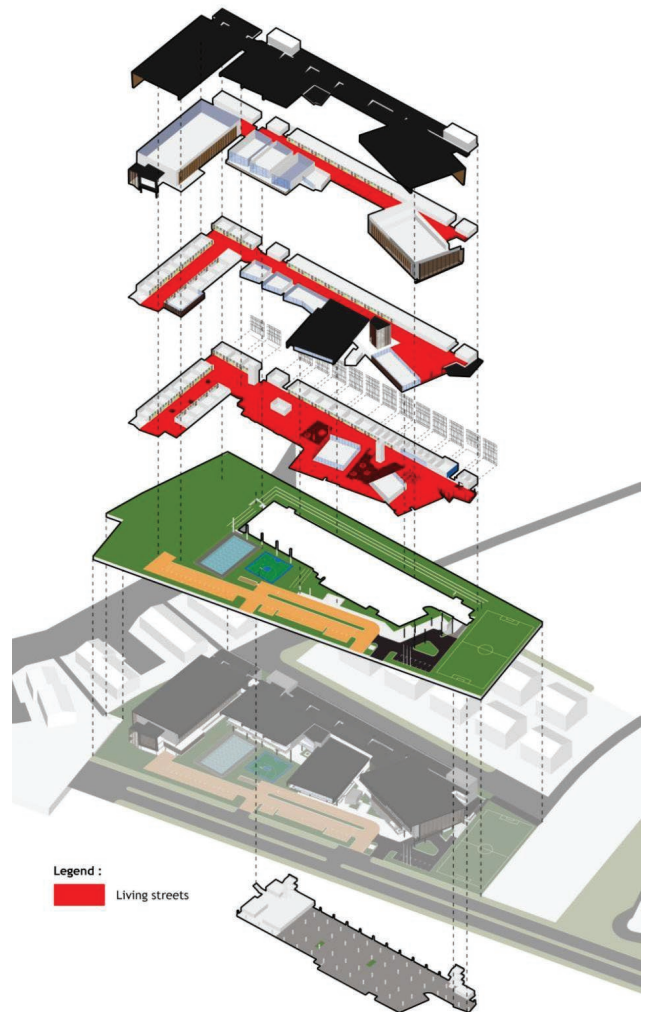
7. Living Street Expansion



8. Living Street & Sports

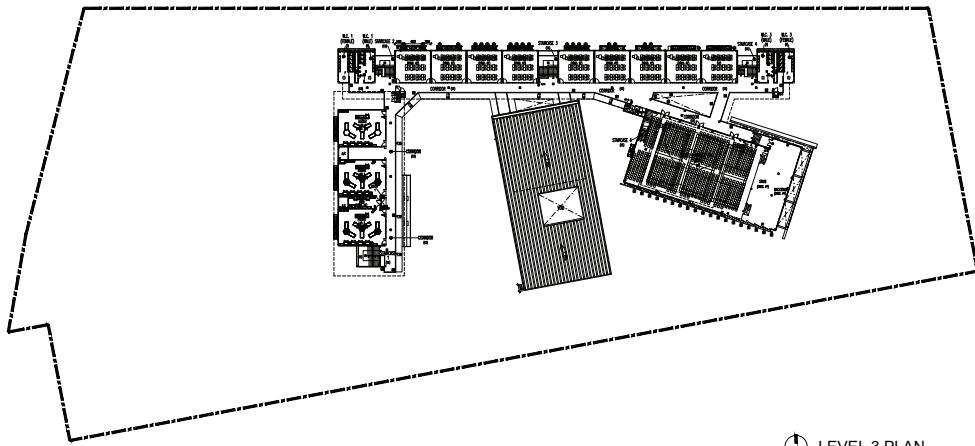


Diagram illustrating the exploration of spatial connectivity and the interplay between the interior and exterior of a classroom.

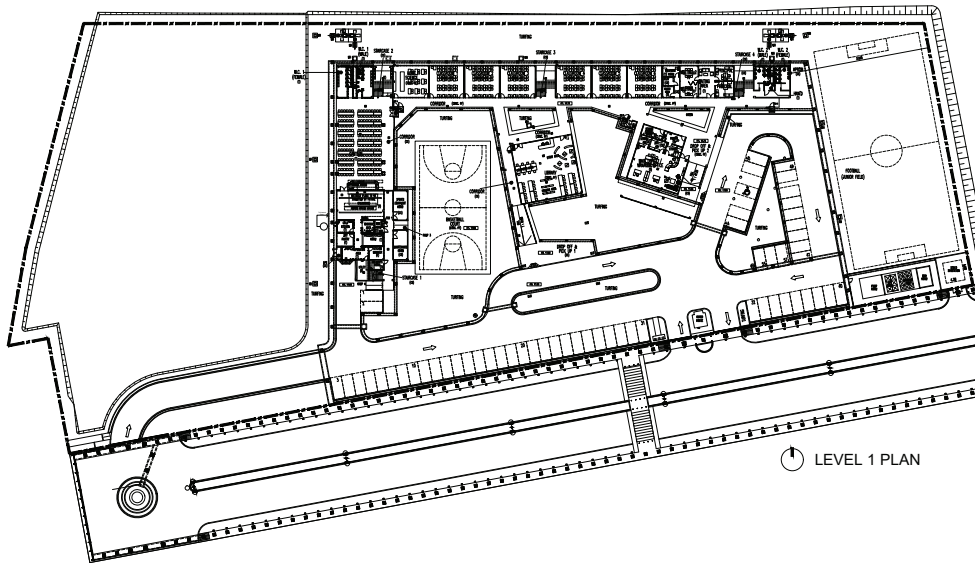


Legend :
■ Living streets

Client	: Borneo Covenant Sdn. Bhd.
Contract Adviser	: Saradise Sdn. Bhd.
Architect	: PDC Design Group Sdn Bhd
Project Principal	: Ar. Wong Siew Ling
Project Team	: Ar. Lau Chun Leong, Lai Yun Heong, Jong Pik Sien, Tay Tze Yong
C&S Engineer	: KTA (Sarawak) Sdn. Bhd.
M&E Engineer	: APK Engineering Consult Sdn. Bhd.
Quantity Surveyor	: PUBM Quantity Surveyors Sdn. Bhd.
Photographer	: Lance Vun



LEVEL 3 PLAN



LEVEL 1 PLAN

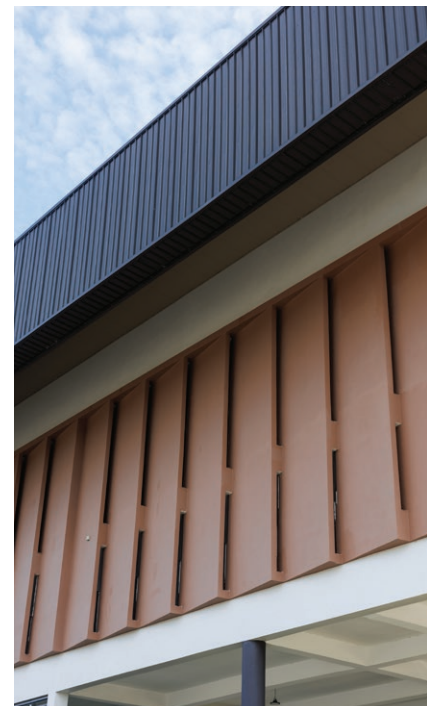


The school's design takes a simple and cost-effective approach by considering the local weather conditions. With the building predominantly facing north-south, it maximizes cross-ventilation, harnessing the prevailing winds from the northwest, southwest and southeast. This design strategy not only promotes energy efficiency but also ensures a comfortable learning environment for students and teachers. In addition to this, features such as verandas, courtyards, large roof overhangs, screens, and landscaping further enhance the school's functionality and effectively address the challenges posed by the local climate.

The Borneo International School is strategically situated in Saradise, Kuching, offering a promising proximity to an up-and-coming residential development. Beyond its educational role, the design of the school aspires to be a new landmark in the Saradise neighbourhood. It seeks to connect with the surrounding commercial and residential context, contributing to the creation of walkable neighborhoods. Encouraging students to walk or to cycle to school promotes a healthy lifestyle, independence, and instill a strong sense of community. The design aims to become a centre of the community, with its influence and benefits radiating throughout the neighbourhood. By fostering a sense of community connection, the school ensures that it does not exist in isolation but rather as an integral part of the lively fabric of Saradise.

In conclusion, the Borneo International School sets a compelling example of how school design can break free from conventions and serve as a catalyst for positive change. The project, aptly titled "Breaking the Boundaries," boldly challenges the conventions that have long constrained school design. The Borneo International School's approach demonstrates that even with all the typical constraints faced by school design, creativity can still thrive.

Text by: Tay Tze Yong





TAMARIND SQUARE & SUITES @ CYBERJAYA, SELANGOR

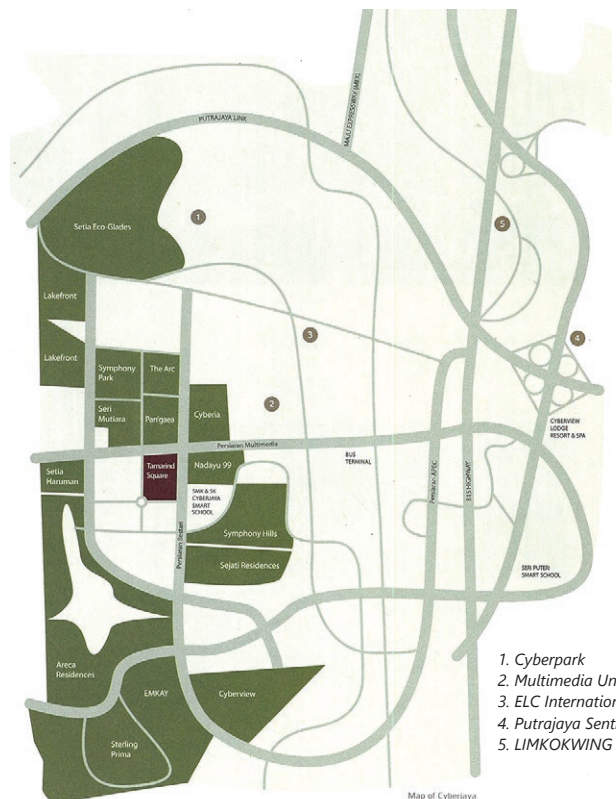
by *Garis Architects Sdn Bhd*

ARCHITECT'S STATEMENT

Tamarind Square, named after Tamarind tree is a mixed commercial development comprising of 28 units, 4-5 storey semi-d shop offices and 72 units, 3 storey garden shop offices with multilevel podium carpark. The symbolic Tamarind trees planted at the northeast main arrival plaza are highly visible at street view.

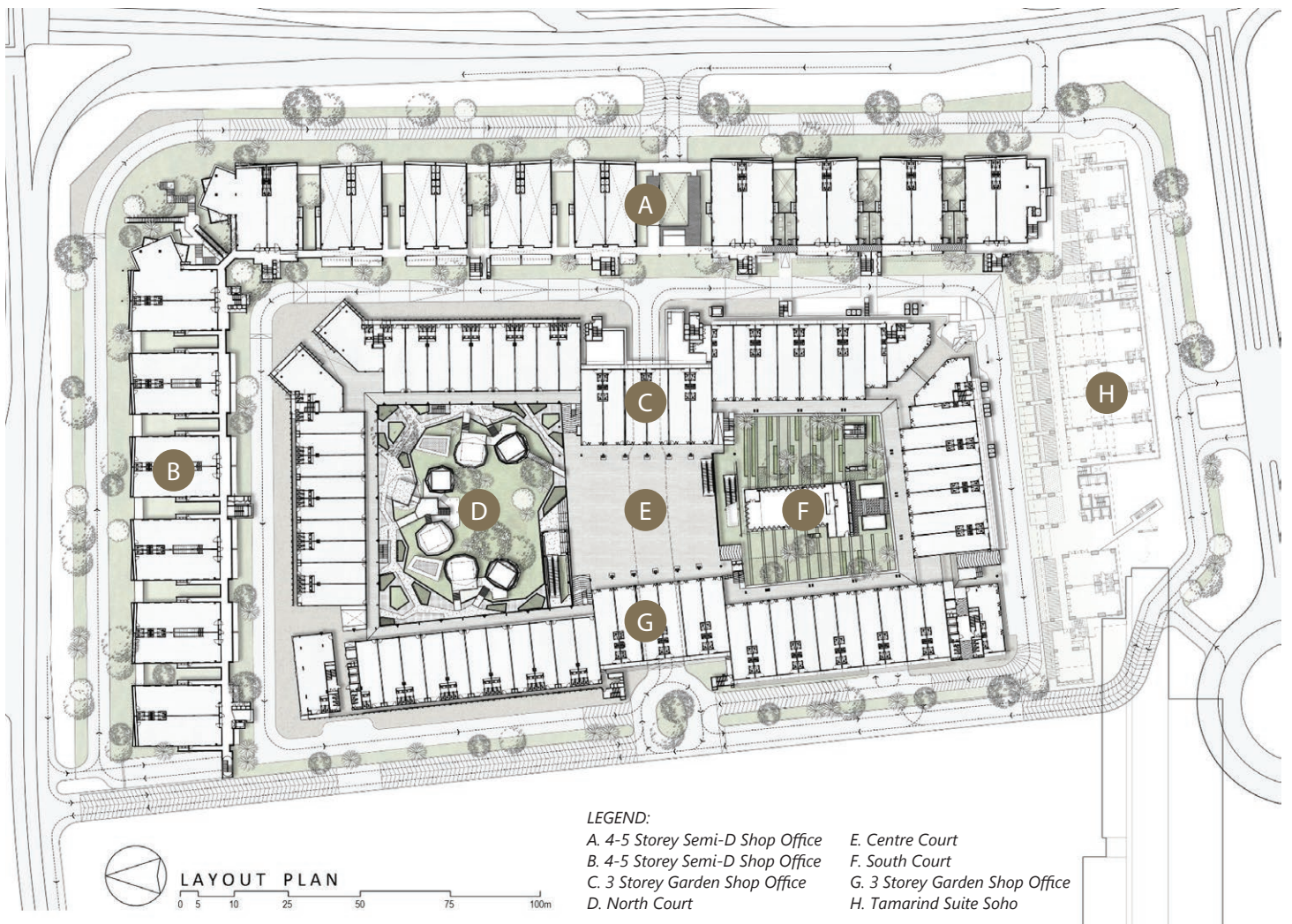
The noble design objective of the developer was to break away from the ordinary, to innovate and reinvent the sense of space and belonging with old village charm neighborhood and retail ambience with sustainable design that fit within local context and climate, providing multiple functional spaces with adaptability, engaging the community with public amenities, creative social events and educational showcase to foster the community spirit and to inspire the youth of today.

Tamarind Square was planned to overcome the typical problem of traditional shop office development by integrating overall commercial entities with communal amenities for charity initiatives, community market and green workshops; providing escalators for ease of movement; allowing ample and convenient carparks, efficiently planned traffic circulation and carpark system to ensure smooth vehicular flow and implementing good security and proper management services for a clean environment.



1. Cyberpark
2. Multimedia University
3. ELC International School
4. Putrajaya Sentral
5. LIMKOKWING University

Map of Cyberjaya



LEGEND:

A. 4-5 Storey Semi-D Shop Office
 B. 4-5 Storey Semi-D Shop Office
 C. 3 Storey Garden Shop Office
 D. North Court

E. Centre Court
 F. South Court
 G. 3 Storey Garden Shop Office
 H. Tamarind Suite Soho

Together with the idea of 'mall in the garden' is the idea of 'gathering under the tree'. In the villages and small towns of Asia, people have always gather under the tree - to have a meal, haircut, to gossip, to watch a puppet show or a movie.

Garis Architects undertook the low rise commercial and community development for larger semi-detached commercial units with public road frontages, smaller retail & enterprise units with pedestrian access including various community spaces and garden courtyards in phases 1&2.

Unit One Design developed the design for the high rise serviced apartments for residential accommodation, both for short and long term stays in phase 3.

Semi-detached units having the highest value are located with prominent frontage to the main public streets. By stacking another layer of semi-detached with access from the inner elevated podium street, these units also enjoy the same street frontage as those below.

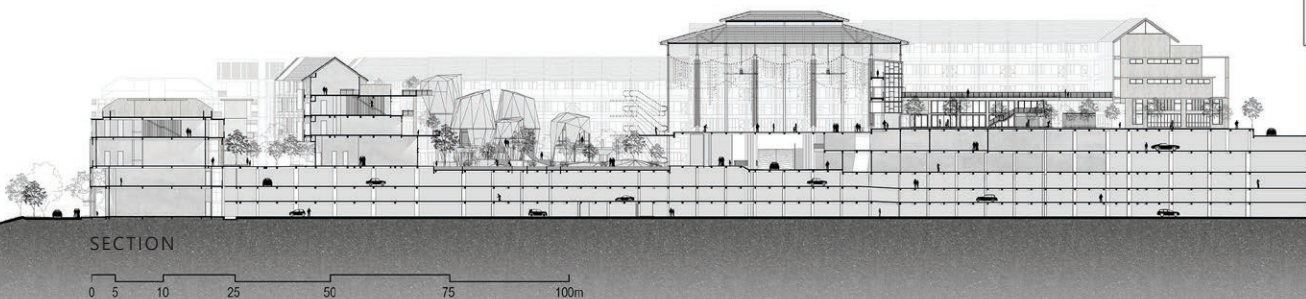
The overall buildings are stratified in multiple ascending layers starting with lowest public street layer, followed by inner elevated podium layer (+6m) and finished with the

garden courtyard pedestrian layer. This has similarities with medieval city of Porto, Portugal where the activities rise from busy water front to the town square on a hill.

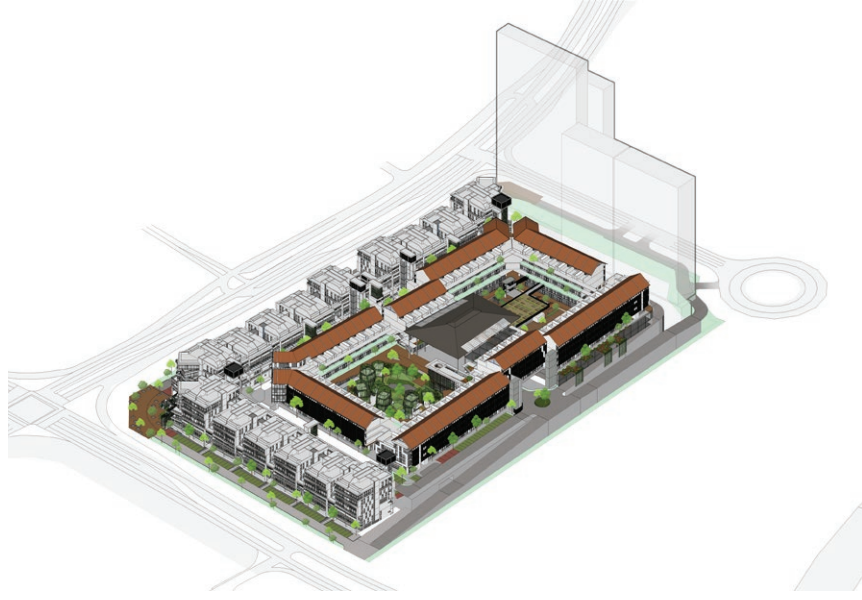
On plan, the buildings are arranged in 3 concentric rectilinear rings from public streets transitioning towards the pedestrianized garden courtyards, replicating the pattern found in the Medina city of Tripoli, Libya. Wide streets gradually narrow to lanes and alleys, reducing in busyness and ambient noise with each layer.

Two major garden courtyards, each with distinctive landscaped features, sandwich the large covered central court for community events.

Forming the backdrop on the south rises the Tamarind Suites, comprising 33 level (225 units) and 39 level (449 units) residential tower of lofts and studios with some retail & offices at the lowest floors.



SECTION



Tamarind Square recalls an era of traditional urban principles of entering a "wallet" city through Portal Gates, meandering through alleyways and arriving at the heart of the city to discover a world unlike any other.

Tamarind Square fulfils the primary function as an entrepreneurial hub within the Enterprise Park designation of Cyberjaya, but exceeds by providing a venue for an Agora, gathering people to engage in the meeting of minds, to interact, to exchange, to trade, to create, to recreate, to live.

It relives the charm of generational friendships and bonding in an environmental that reunites shelter and nature. Like a cloister in an ancient city, the serenity and calm allows a reprieve from the outside world.

The building breaks the mould of convention and takes a journey of exploration into diversity and nonconformity, perhaps resulting in the antithesis of predictable retail expectations.



These are pinnacle-like structures, greened by creepers, and connected by series of stairs. The perfect place for children to explore and students to hang out. The tree houses can also be used as small shops, reading rooms, yoga zones, meeting rooms and other activities.



South Court was designed as a simple outdoor space with benches and sound of water. An open lawn to facilitate the community hall with hosting of events or community activities. Multipurpose Hall functions as a dedicated space to bring the community together.

PUBLIC PARTICIPATION

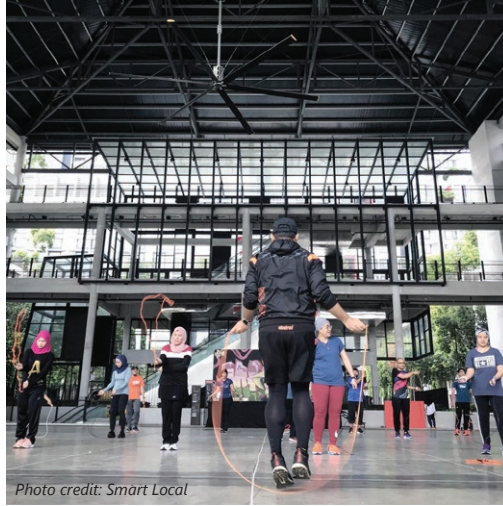


Photo credit: Smart Local

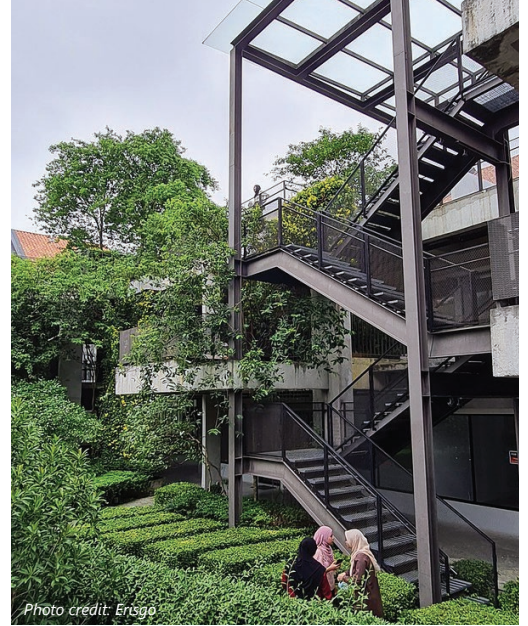
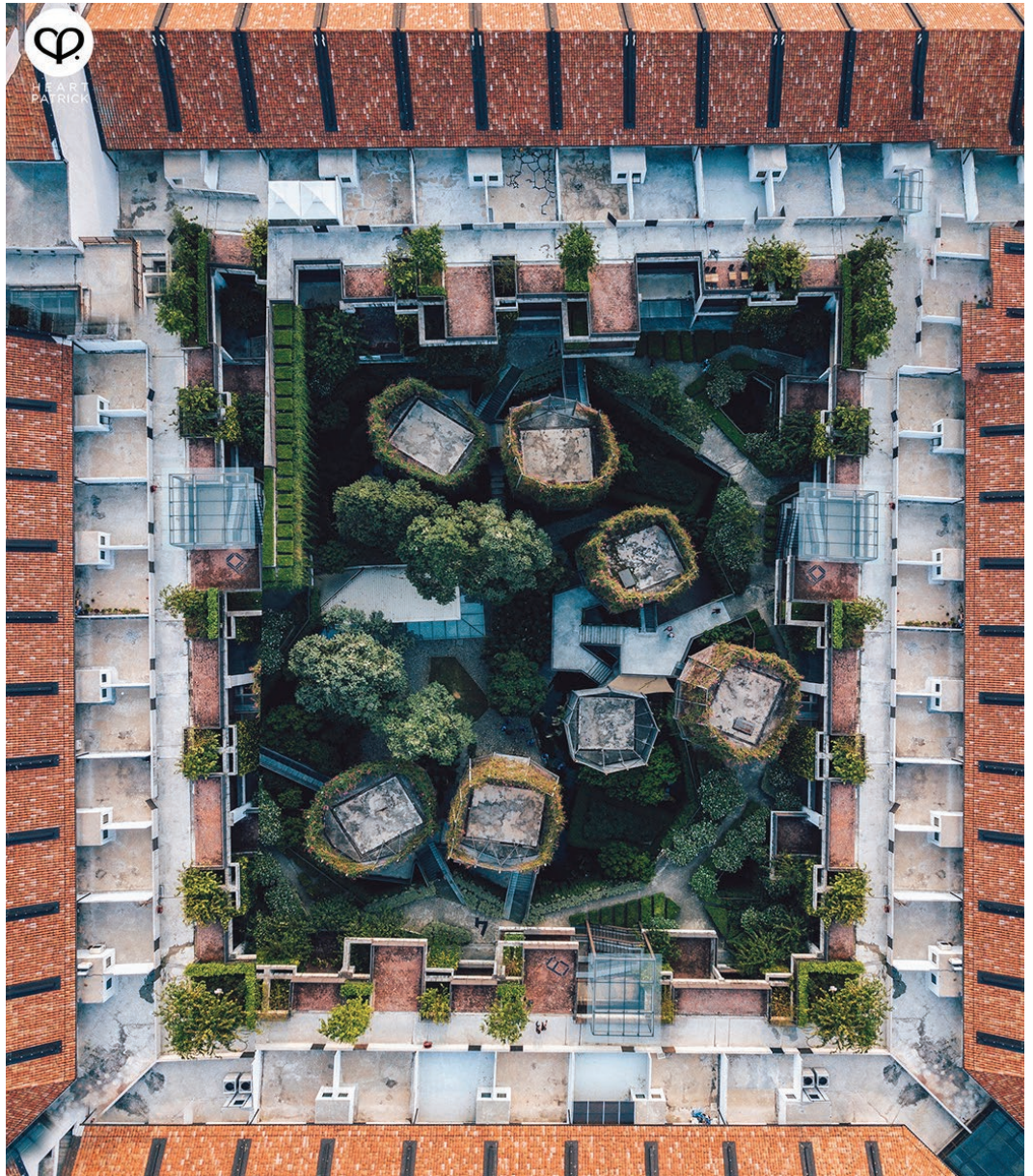


Photo credit: Ensgo

Tamarind Square is the reinvention of the traditional Malaysian shop-office, the modern-day mall, and the Asian village square.



Terracotta Roof, reminiscent of traditional shop houses.



- | | |
|--------------|---|
| Client/Owner | : Tujuan Gemilang Sdn Bhd |
| Architect | : Garis Architects Sdn Bhd (Tamarind Square - Low-rise commercial enterprise Retail-Office)
Unit One Design Sdn Bhd (Tamarind Suites - High-rise Residential Suites) |
| C&S Engineer | : JPS Consulting Engineers Sdn Bhd |
| M&E Engineer | : MEP Engineering Sdn Bhd |
| QS | : YSCA Consultancy Sdn Bhd |
| Landscape | : Seksan Design Sdn Bhd |
| Contractor | : Nova Global Construction Sdn Bhd & Castmet Sdn Bhd |

KENALI KAMI, PAMSC

Written by SiYong

Last Sunday, Noraini, Ivy, Stephen Liew and I travelled from Kuching to Pontianak, following an invitation from the Ikatan Arsitek Indonesia Kalimantan Barat (IAI KalBar) to attend a series of events held in Kota Pontianak in conjunction with the 34th Anniversary of IAI KalBar.

The event includes a 1-month exhibition of architectural projects and a seminar on Monday. PAMSC participated in the exhibition theme “*Kenali Kami, PAMSC*” to give a brief introduction of PAMSC and 11 selected project features by local Sarawakian architects.

JOURNEY TO THE SOUTH

We arrived at Tebedu ICQS around 9 a.m. on Sunday. After the customs clearance, we met our Indonesian driver Pak Yoga and began the 5-hour road journey from Entikong to Kota Pontianak. The journey was quite pleasant with a few quick stops for local kopi and a quick bite.

After arriving in Pontianak, we headed straight to Khatulistiwa Park, which was not very far away from the city centre for the Equator Monument. We then met our host Pak M. Ridha Alhamdani from IAI KalBar there for the arrangement to visit their office at Port99.

One of the objectives of this trip was to promote cross-border engagements and strengthen the ‘*ikatan*’ between PAMSC and the IAI provinces in Kalimantan (there are 5 provinces; KalBar, KalTim, KalTeng, KalSel & Kaltara).

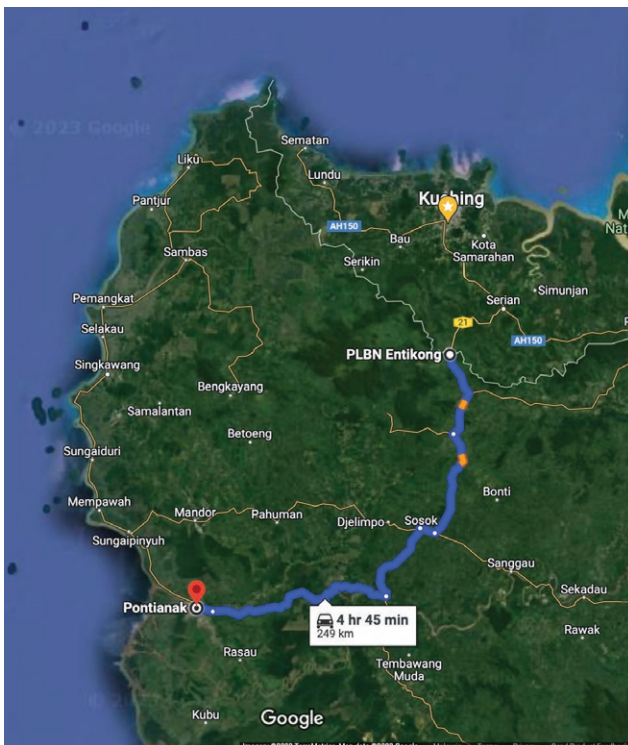
A year ago, I travelled to Kota Singkawang on a similar mission. That time PAMSC was invited as a speaker for the 1st Borneo City Forum. (The trip was featured in our newsletter: NEWS PAMSC Circular 26 - 21st Oct 2022 Issue)



Group photo of PAMSC contingent at Tebedu ICQS.



Standing at the Equator Monument located exactly at 0° N, 109°20'E





Courtesy call to IAI KalBar's office at Port 99, welcomed by the committee member Ms. Kiki and met with Ar. Mohd Ridha (Ketua IAI KalBar)



IAI KalBar hosted a welcoming dinner at Port99 for PAMSC and the speakers of the seminar.



Group photo after the welcoming dinner at Port99.



PAMSC received souvenir from the organiser presented by Dr. Uray (most right) and Ar M Ridha.

BEYOND KALBAR: ARCHITECTURE FOR ALL

The 1-day seminar was organised by IAI KalBar, Bappeda Pemerintah Provinsi Kalimantan Barat and Program Studi Arsitektur Universitas Tanjungpura in Hotel Ibis, Kota Pontianak.

In line with the theme of the seminar, **Dr. Uray Fery Andi** shared his view on how architecture should not be limited to a certain group of users by emphasising the importance of universal design. **Ar. Yacobus Getot Subroto** showed how he turned the negative spaces into a more vibrant event venue in Jakarta (M Bloc Space & POS Bloc) not only as a designer but also as an operator himself.

Ar. Gregorius Antar Awal (a.k.a. Mas Yuri Antar) impressed the audience with his passion for documenting the traditional ways of building construction with his students and volunteers for Waerebo Village and many rural places around Indonesia. He also stressed the importance of architects in Indonesia being involved in the IKN projects.

Anton Siura shared how his studio helped to revitalise the Tebet Eco Park to resolve the disconnect accessibility, flooding and social issues in Jakarta. The project won the President's Design Award 2023 in Indonesia. **Ar. Andy Rahman** demonstrated how his research on bricks using local earth in various places transformed the unique architectural façade of his design. He also studied in detail the material and started manufacturing his own bricks including the unburnt brick or "*bata hidup*".

The seminar was attended by government officers from the province, members of IAI KalBar and students from Universitas Tanjungpura. Later this year, we can expect some of our Indonesian peers to travel to Kuching to attend our PAMSC Design Festival in November.

END



PDF2023 DESIGN FORUM : INTRODUCTION OF SPEAKERS 1/6

As a run up to our PDF2023 Design Forum, we will be introducing our speakers over the next few issues of NEWS and FLASH - this is our first speaker: **Dirgantara Dirgent from DDAP Architect, Bali. INDONESIA**



Tekuni Dua



Tekuni Dua



Jia Pavilion

DDAP ARCHITECT

DDAP is based in Bali, Indonesia and renowned for their ability to create unique design solutions which is grounded in the natural environment. Their works often reflect local values, and sensitivity towards the environment.

I Ketut Dirgantara, is the principal at DDAP, he grew up in Ubud strongly influenced by its strong sense of culture and relationship with nature. After graduating from ITB, he worked as a senior architect at an urban planning consultant in Singapore before starting DDAP in 2015. In addition to practising architecture, Dirga was often invited to give lectures at various universities, seminars and architectural events. His interest in contextualism earned him the position as the curator of the Indonesian Pavillion at the 17th Venice Architecture Biennale 2020.



Urban Asia Industri

ALL-WEATHER WALL CLADDING

"The IKEA Blue coated steel is from our premium high durable **envioSHIELD** series which provides a plethora of benefits when applied to architectural surfaces.



IKEA PASAY CITY MANILA CLADDING BY ASTEEL BV-DEK



+60 82-433 888



enquiries@asteel.com.my



www.asteel.com.my

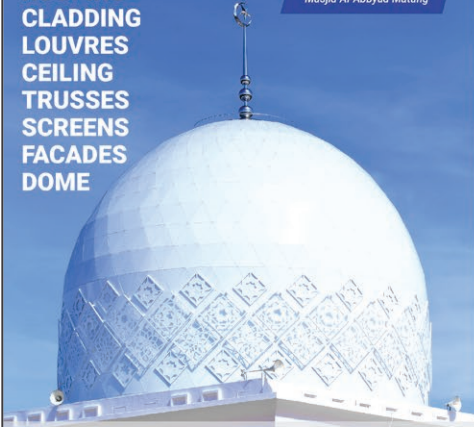


asteelgroupmy

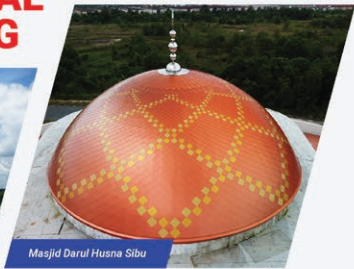
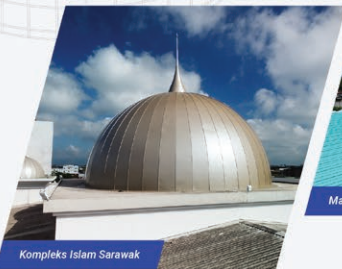


ROOFING
CLADDING
LOUVRES
CEILING
TRUSSES
SCREENS
FACADES
DOME

Masjid Al-Abbyad Matang



DOMES STRUCTURAL & FINISHING



Kuching Tel : +6010-982 0235 / +6082-496336

Bintulu Tel : +6012-852 8712

enquiry@imetal.com.my

www.imetal.com.my

LEADING PORCELAIN & CERAMIC TILE BRAND IN MALAYSIA



Contact us for more information:

KIMGRES MARKETING SDN. BHD.
[Registration No.: 198401001796 (114311-T)]
4 1/2 Mile, Kung Phin Road, Off Penrissen Road,
93250 Kuching, Sarawak.
Tel: +6082-451 567/ 451 017

SIMPLICITE
Light Grey (600x600mm)



@Kimgres



@kimgrestiles



@KimgresTiles

Follow us!



Armstrong Flooring

Maximum flexibility and value for

**Healthcare,
Education, Residential
& offices etc.**



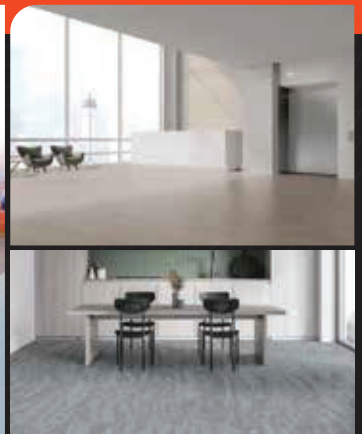
+6082 333 929

+6082 336 929

kenlaw@globalniaga.net

www.globalniaga.net

Lot 1618, Sublot 10, Lorong 6A, Jalan Setia Raja, Muara Tabuan Light Industrial, Phase 2, 93350 Kuching, Sarawak, Malaysia.





SIKA CAR PARK & TRAFFIC COATING

Floor coating systems for parking garages have to meet the highest demands as outdoor, multi-story and underground car parks are subject to many different stresses, including atmospheric conditions, automotive fluids as well as vehicular and pedestrian traffic load.

Main advantages of Sika parking flooring

- High wear resistance
- Dynamic and static crack-bridging properties
- Chemical resistance
- UV stability
- Rapid-curing
- Slip resistance

SIKA KIMIA SDN BHD
Level 3, No. 42, Block C1,
Saradise Kuching,
93350 Kuching, Sarawak

Contact
Phone +6082 288 766
Fax +6082 288 766
www.sika.com.my

BUILDING TRUST



UNILOK®
STEEL ROOF & CLADDING



ONE-STOP CENTRE FOR STEEL ROOFING SOLUTIONS

UGI offers warranty against perforation due to corrosion for your roofing & walling application

UP TO 25 YEARS*

*warranty T&C apply



Certified To MS 2500 : 2012
Certification No.: PC003380

UGI.com.my

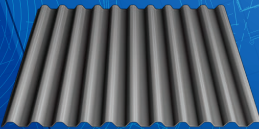
082-439 257

UGIProducts



Colorbond®

LYSAGHT



LYSAGHT® SPANDEK OPTIMA™

The Versatile and Economical Choice for Commercial and Industrial Cladding

Upgrade with LYSAGHT® SPANDEK OPTIMA™ - Advanced cladding with versatility, durability, and cost-effectiveness. Its bold trapezoidal ribs, wider coverage, and long spanning capability make installation quick and efficient. Experience reliable performance and cost savings with fewer sheets required. Enhance your building with LYSAGHT® SPANDEK OPTIMA™ for form and function in one solution.



NS BlueScope Lysaght Sarawak Sdn Bhd

+6082-333621



Lysaght Malaysia

Learn More



ADHESIVES & GROUTS
for ceramic tiles & stone materials



www.mapei.com.my

MAPEI®

ADHESIVES • SEALANTS • CHEMICAL PRODUCTS FOR BUILDING

Follow us on social media
@MapeiMalaysia

