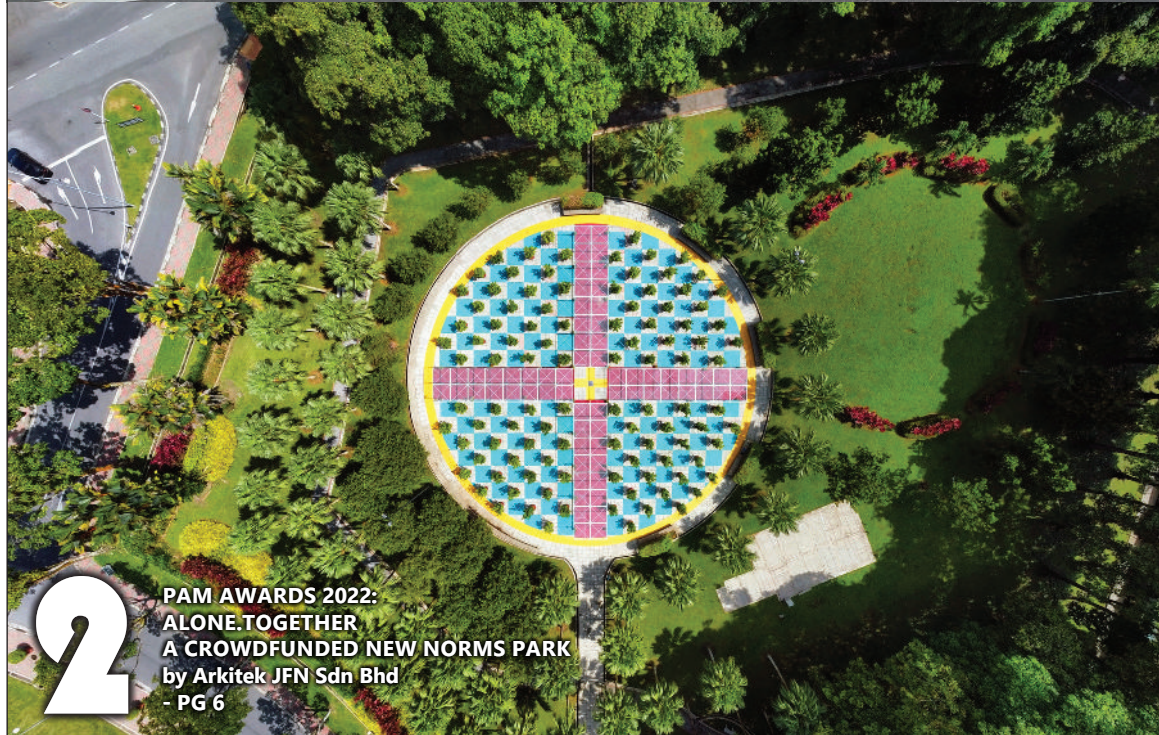


Term 2022-2023 8th July 2022
PPK469/01/2017(034673)

News+FLASH is the digital offspring of INTERSECTION. It is published digitally each fortnight for the foreseeable future, until we run out of ideas, articles or money.

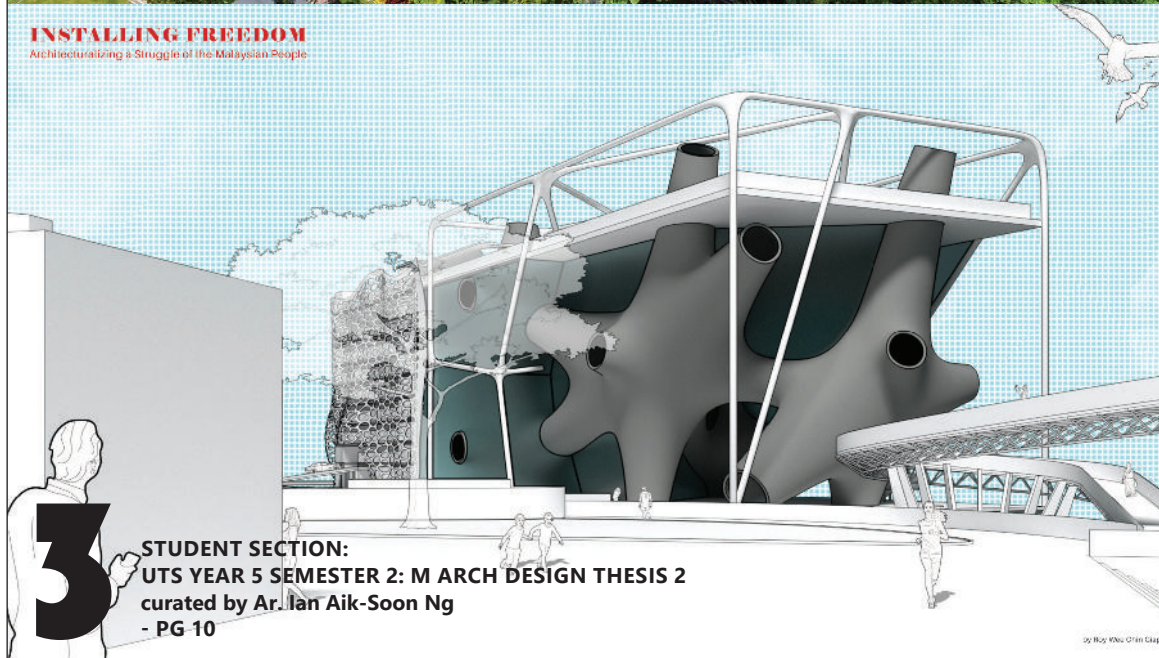


PROJECTS FEATURE:
PEI MIN MIDDLE SCHOOL, MIRI
by James Sie & Associates
- PG 2



2 **PAM AWARDS 2022:**
ALONE.TOGETHER
A CROWDFUNDED NEW NORMS PARK
by Arkitek JFN Sdn Bhd
- PG 6

INSTALLING FREEDOM
Architecturalizing a Struggle of the Malaysian People



3 **STUDENT SECTION:**
UTS YEAR 5 SEMESTER 2: M ARCH DESIGN THESIS 2
curated by Ar. Ian Aik-Soon Ng
- PG 10

ALSO
IN THIS ISSUE :

**UNIVERSITY OF
TECHNOLOGY SARAWAK,
INDUSTRIAL ADVISORY
PANEL (IAP) VISIT 2022**





The New Entry gesture opening with 22.5m prestressed beam's design.

PEI MIN MIDDLE SCHOOL, MIRI

by James Sie & Associates

ARCHITECT'S STATEMENT

The new administration building block was designed to be open and welcoming. The first ever school in Miri to use a prestressed beam structure, which is at 22.5m long. This is to create a wide-open space down below to cater for many functions such as welcoming VIP guests, a gathering place for musical bands, an amphitheatre, a drop-off point and so on.

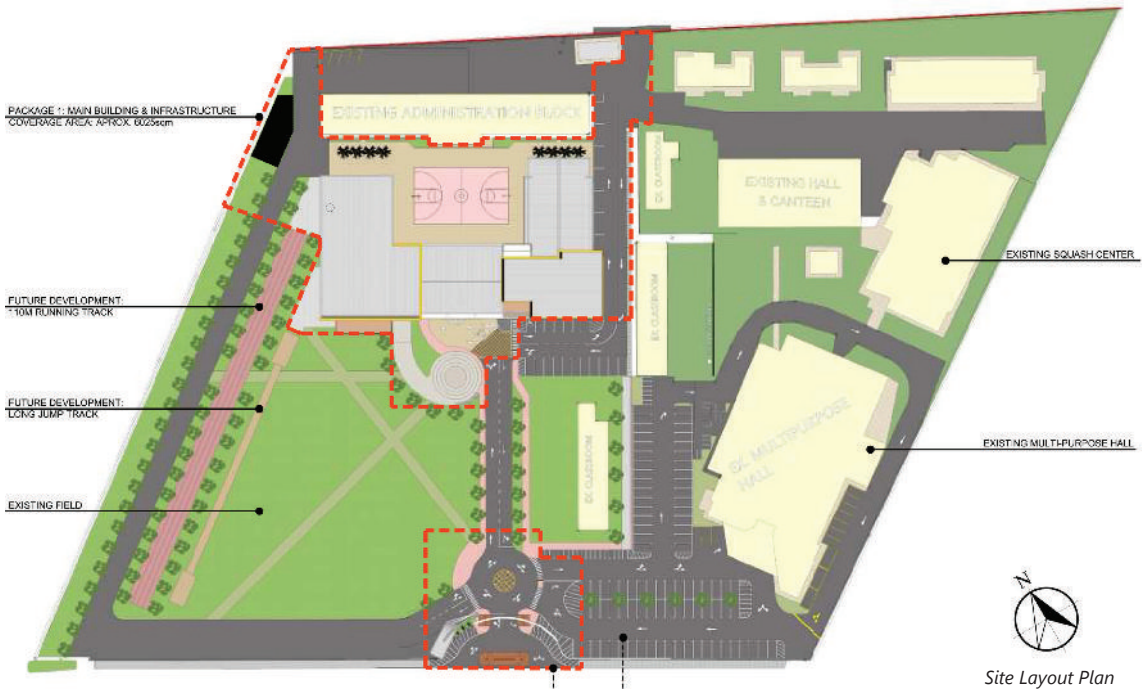
The transparent main entrance with the modern façade invites the view into the centre, where the old basketball court remains standing. Hence, the idea of a "courtyard" concept is created. All the communication areas and classrooms are situated around the courtyard with room-high windows, which allows direct connection to the outside with plenty of natural light, as well as easily gathering students at their corridor since the classes are situated around this public space.

The main building is connected by 2 other buildings, creating a 'C' shape, with the building on the left being the library, and to the right being the reception as well as the gallery of the school, where the public who would like to know more about the school could come here and visit. The building on the right also features a lecture hall that can be used for indoor and outdoor performances.

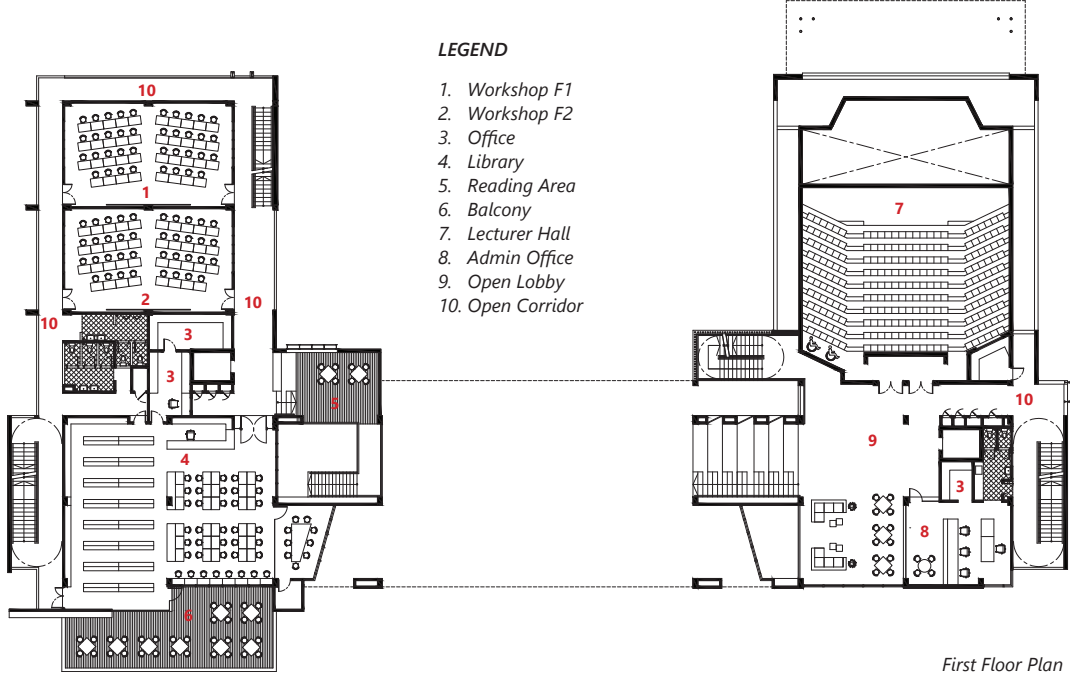


Curtain Glass design towards the school field.

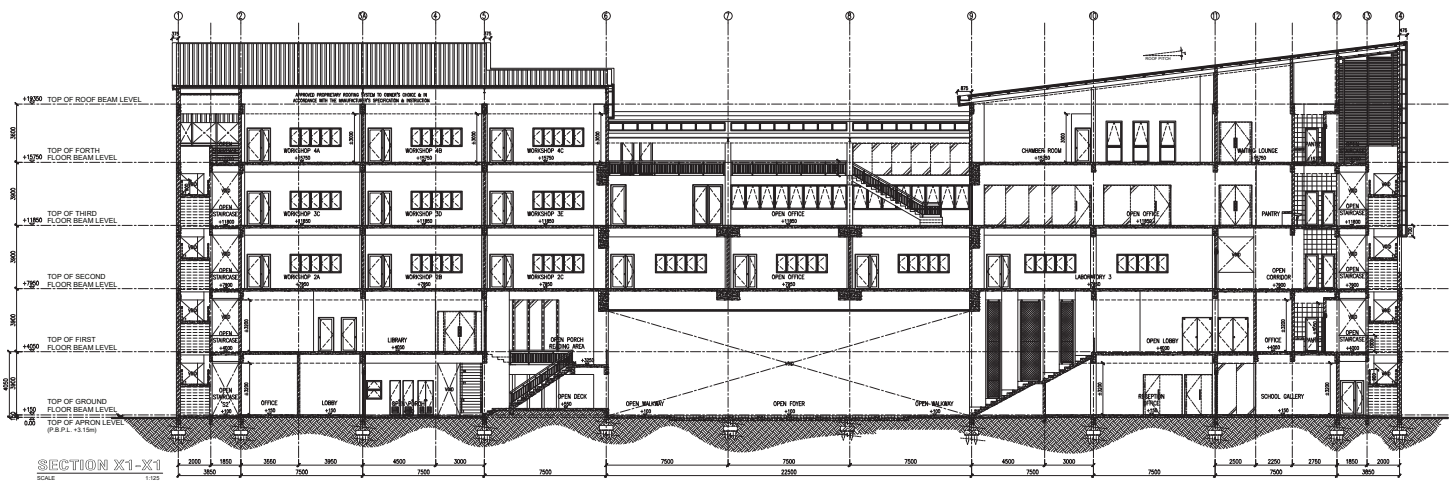
END



Site Layout Plan



First Floor Plan



Section



The past of Pei Min Middle School.



Construction of Monument.



Construction of Roof Fin.



Construction of Monument.



Construction of Roof Mezzanine.



Construction of Front Facade.



Construction of Top Span Handrail.



Construction of School Gate Roof.



Inspection by Engineer and Employer.

Architect	: James Sie & Associates
Design Team	: Chin Chee Hong, Andrew Wong, Eveline Yoong
Client	: Pei Min Middle School Miri
Quantity Surveyor	: ELP Quantity Surveyors (Sarawak) Sdn. Bhd.
M&E Engineer	: Perunding CH Engineering Sdn. Bhd.
C&S Engineer	: PCS Konsultant Sdn. Bhd.
Builder	: Green Summit Construction Sdn. Bhd.



1



6



2



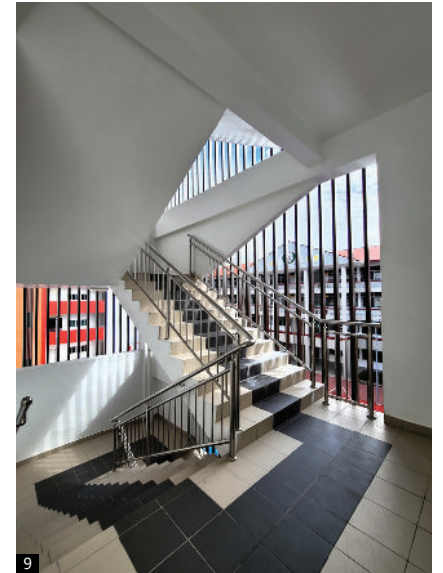
7



3



8



9



4



10



5

CAPTIONS:

1. A 'U' shape building form create a 'courtyard' space in between new and old school building block with corridor all round and allows students to watch the event from the top.
2. 22.5m wide opening creates a high ceiling reception lobby cum covered drop-off for parent pick-up the student during raining and an open space for event.
3. A single storey lecturer hall link to reception lobby.
4. New teachers' office with high ceiling design.
5. New director's board room with discussion room and balcony fronting school field.
6. Create a safer entranceway by setting backward the new iconic school gate. Remain the existing gateway as memorial sculpture and create multiple "gateways" "门中门" in eye vision.
7. The New Entry gesture opening with 22.5m prestressed beam's design.
8. Pathway towards lecturer hall.
9. Open staircase design.
10. A lecturer hall's stage that design for indoor and outdoor usage.



ALONE.TOGETHER
A Crowdfunded New Norms Park
by Arkitek JFN Sdn Bhd

Commendation - Special Projects Category, PAM Awards 2022

We first featured this crowd funded project on the 14th of August, 2020, so it is to our immense pride that this local project won an award at the PAM Awards 2022 recently, especially when it is a project by two young architects - Ar. Goh Tze Hui and David Boon. We met up with Tze Hui to gain an insight into this project and their current work.

ARCHITECT'S STATEMENT

Written by David Boon & Goh Tze Hui

In 2020, at the peak of the Coronavirus pandemic, during the Movement Control Order (MCO); like a majority of Malaysians nationwide, it was also our first time working from home.

I remember clearly that it was a Wesak day afternoon. We were having a conversation on how the pandemic has redefined our roles as architects, the designers of the built environment. That conversation went on to spark the defining discussion on what we, as young professionals under mentorship, can do to develop and provide something for the community in the New Normal.

To us, architecture is a form of functional art, where its beauty is derived from the narratives associated by the community that it serves.

We designed a public installation that explores how architects, designers of the built environment, can raise awareness on environmental sustainability whilst encouraging outdoor activities; and to stay safe through promoting good design in facilitating proper social distancing. Imbued with symbolism and life; the installation is a grassroots movement, a project by the people, for the people.

With the design in one hand, and its narrative in another; we pitched our idea to our Mayor of Kuching City South Council, that we will volunteer our time, resources, and develop the design from the installation's inception to conception on a pro-bono basis. Under the patronage of our Mayor, the project was born!

Our Mayor launched a ground-breaking crowdfunding drive through social media, which exceeded its crowdfunding goals in less than 24 hours! It is a testament of collaborative joint endeavour between the architects, and the local council; with strong support of the community.

Following through with the successful crowdfunding, we secured sponsorship from Trans Paint Sdn Bhd, a local paint manufacturer; and facilitated the engaged fabricator, Wan Li Wan Welding Works, in material procurement.

We managed the coordination in its entirety between the fabricator, painter, and council officials through the entire process which ranges from detailing, mock-up prototyping, off-site fabrication, installation on site, and landscaping works.

To encourage thoroughness and transparency, we have also created a regularly updated blog (<https://arkitekjfn.blogspot.com/p/new-norms-park.html>) that documents the entire process from initiation, delivery, and beyond. A plaque bearing an engraved QR code has been installed, linking patrons with access to the documentation and to an online space to continue discussion and conversations.



CAPTIONS:

1. The installation reactivates a forgotten space, re-integrating it into surrounding recreation parks encircling the Majlis Bandaraya Kuching Selatan City Hall (in background).
2. The installation brings a series of prefabricated reversible additions constructed using upcycled materials.
3. The installation has steadily encouraged streams of discourse on how we as a community, can collaborate in opportunities to reshape our existing built environment in adapting to the new normal.
4. The bold striking colours and unique form of the installation makes it a popular check-in spot for park regulars and visitors alike.

07.05.2020 (Wesak Day . 卫塞节)

这是在进入行动管制令快两个月后的卫塞节假日。从行动管制令开始，许多工作遭到搁置或延后，闲暇之余，我们不断思考，这新冠疫情究竟带来什么启示，又如何改变我们未来的生活方式？

当我们隔着电视、电话屏幕观看医务人员为抢救生命而日夜奔波时，我们除了“禁足在家”，还能如何为社会出一份力，致敬这些伟大的前线人员呢？

这期间，最不能适应的是以往被视为理所当然的自由：出入家门、户外活动、与亲朋好友见面等。随着时间的推移，从最初的焦躁感演变成孤独和疏离感。

在这种情况下我们又如何能够确保在足够的社交/人身距离下，安全的回归户外？

未来的公共空间又是如何？

念头一转，我们不正是空间的设计师，那为何不从周遭的空间开始尝试。

赫然记得，MBKS Kuching Park有一座太极公园。不过因其位置隐蔽，一般人都会不会注意到，这空间多为闲置。

话不多说，我们就立刻着手从Google Earth 上搜索了场地的照片，来预测场地的面积周遭环境等。从起稿，讨论到建模，不消一天，初步设计就完成了。

接下来更困难的就是考虑如何推行及筹募资金来实现这个计划了！

18.05.2020

既然我们改造的是南市的公园，当然要寻求南市大家长的意见。感恩南市市长，拿督黄鸿圣在了解我们的计划后不但给予支持，还借出他每周六的Facebook Live 直播平台来推介并发起众筹活动，实现全民参与。

30.05.2020

终于来到直播当日。

这是我们首次的直播，除了兴奋，更多的是担心。为了避免临场发挥失常，我们可是默默的彩排好一段时间。庆幸在市长的引导下，直播顺利结束。也感谢市长强大的号召力，在直播后的24小时内就筹够了资金。

30.07.2020

在筹够资金后，我们也很幸运地找到慷慨的建造方(Wan Li Wan Welding Works)及油漆制造商(Trans Paint Sdn Bhd)的倾情相助。经过了约一个月的时间，这个计划终于完成了。

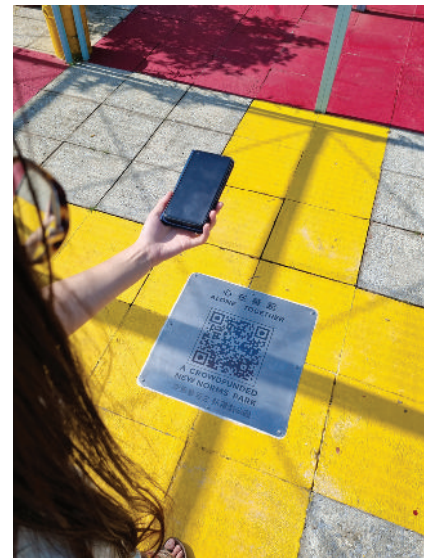
06.07.2022

回首2020年，确实是难忘的经历。新冠疫情在不同程度上都影响了大家的生活。虽然我们现已逐渐习惯了后疫情的新常态，希望大家都能从中获得正面的启发。而我们也借此设计勉励大家勇于改变、适应也积极探讨如何共同塑造未来的公共空间。

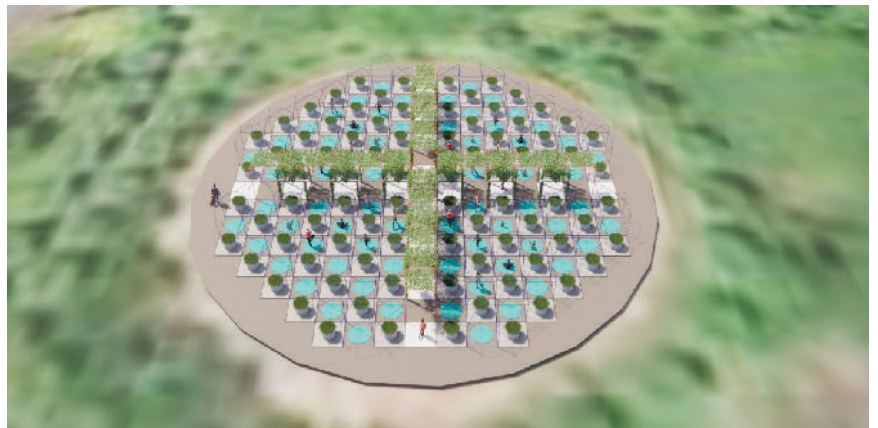
Written by David Boon & Goh Tze Hui



Crowdfunded under the Mayor's patronage, this installation demonstrates public and private joint effort.



Installed in the centre of the installation is a QR code engraved on a plaque providing information of the project from initiation to delivery.



Q & A WITH TZE HUI GOH

F : Flash T : Tze Hui

F : ***Congratulations, this is not the first time Arkitek JFN has won PAM Awards - but we believe this is your first time. Tell us what this means to you personally, does it make you strive for more awards in the future?***

T : This award is definitely momentous for me, and is a huge encouragement from the Architecture fraternity for us to continue striving to deliver good design and to promote the same to the community.

F : ***What does this award mean to your team? Do they share your joy?***

T : The team is delighted to receive this joyful surprise, as we did not expect to win, let alone with a small project budget of less than RM 12,000. This award means a lot to the project team, as this is their first time participating in an award-winning Architecture project.

F : ***What is the client's role in winning this award?***

T : The actual Client for this project is the public, who have supported and funded this project, through our crowdfunding drive via City Council of Kuching South (MBKS) Mayor's Facebook livestream.

MBKS as the owner of the site has taken up the role to prepare the site, implement the soft landscaping, provide security and ongoing maintenance of the installation.

F : ***Does winning this award mean that more people will be seeking you to design and build projects of a similar nature?***

T : Previously, we have self-initiated community engagement projects of similar nature, to advocate for heritage conservation and awareness.

With public interest always in mind, we find that projects in this vein to be quite fulfilling, and look forward to do more as the opportunities arise.

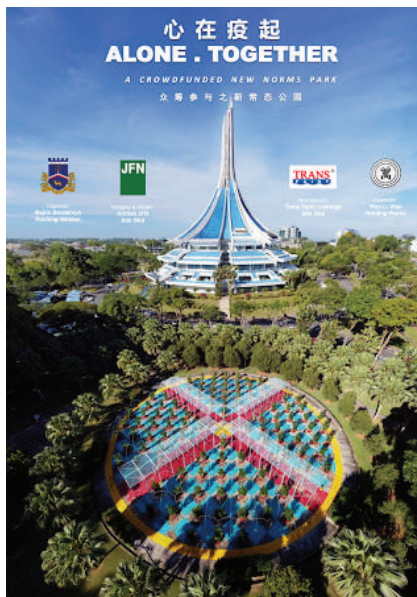
F : ***Is there another award winning scheme on the drawing board at the moment?***

T : We treat each of our projects with reverence, but winning an award is not just up to us.

It requires good rapport with a client who is open to ideas, good site context that allows narratives to develop, so that there can be opportunities to push boundaries; and proper execution of the works.

I suppose we can summarise it with the Chinese Proverb “天时、地利、人和” (*when heaven and earth align, man prospers*).

We are currently working on some interesting projects, and you may read about it soon from our blog <https://arkitekjfn.blogspot.com/>

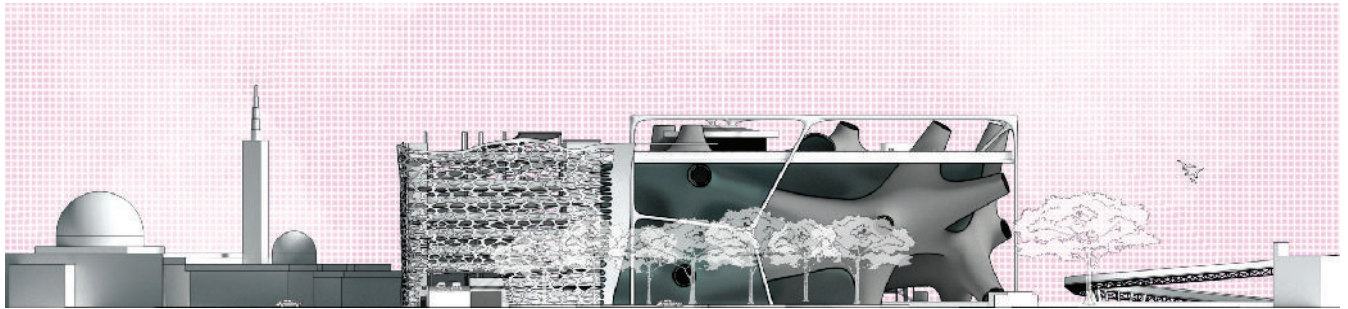


END

UTS YEAR 5 SEMESTER 2: M ARCH DESIGN THESIS 2

Curated by Ar. Ian Aik-Soon Ng

BA (Hons) (Leeds), Dip Arch (Plymouth), MSc (Architecture) (UM), PhD (Hospitality & Tourism) (Taylor's)

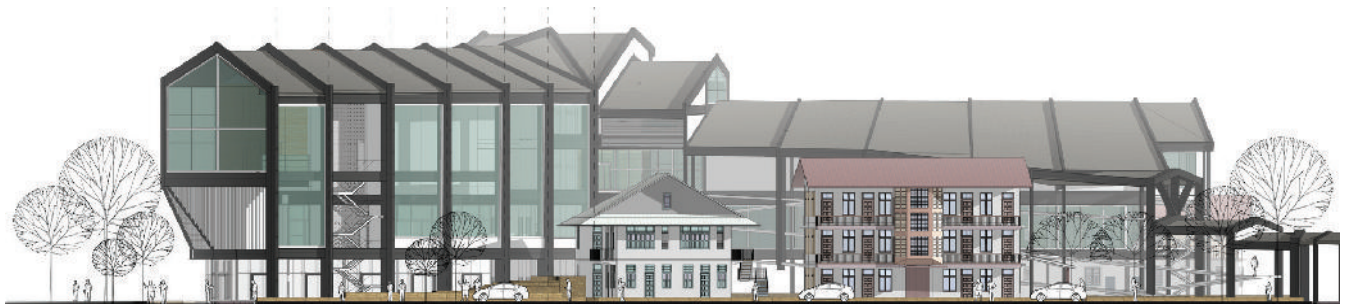


Elevation towards Kuching Court House in NSTALLING FREEDOM by Roy Wee Chin Giap.



Four students of the School of Built Environment, University of Technology Sarawak, completed their Design Theses 2 recently and were reviewed by Ar Adrianta Aziz (L2), Ar Ng Chee Wee (R2), Ar Awang Hashim (R3), and Ar Samuel Lee (R1). This 3rd cohort of the university's accredited M Arch programme explored Critical Borneo Regionalism in the 4th Industrial Revolution going forward. The programme encourages bold theoretical thinking underpinned by strong constructional knowledge. Featured are sample work by Wong Lin Sze (L3), Thomas Tiong (L4), Kong Zhe Ming (L6), and Roy Wee (L5). Design Thesis 2 was led by Ar Dr Ian Aik-Soon Ng (R4) and supervised by Ian and Ar Haris Fadzilah (R5). Contact: Ian Aik-Soon Ng -

iannghd@gmail.com <https://www.instagram.com/iannghd/>



Gable ends frame the historic landmarks of Sibü; modern insertions embrace existing heritage buildings.



Cultural centre as an anchor of memory.

THE RETURNING OF PROMISED LAND

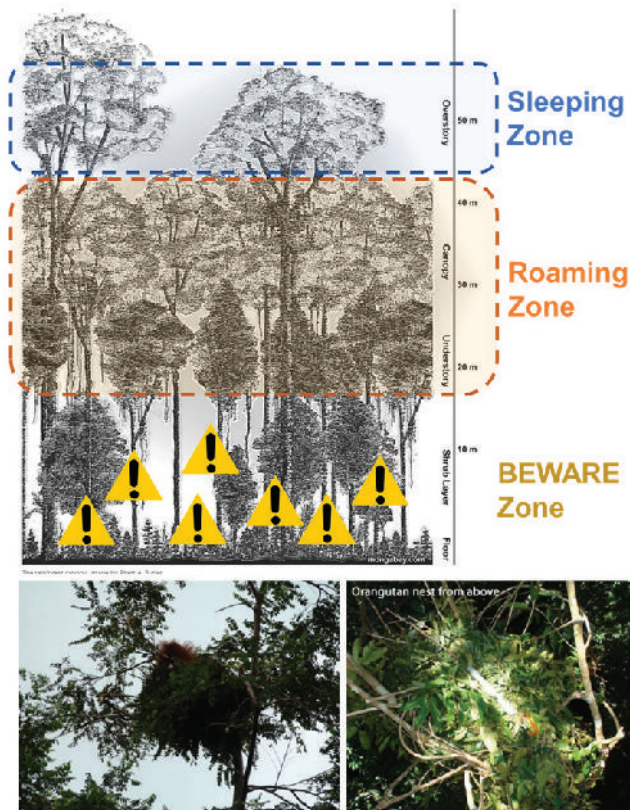
Design Thesis by Wong Lin Sze

<https://www.instagram.com/lzwong1001/>

How can an innovative architecture evoke the layers of cultural memory associated with a historical patch of a town that is marching forward with urbanization? This challenges communities whose social memory is synonymous with the architectural fabric created by their ancestors. Bukit Assek in Sibü, Sarawak, is such a community. The vibrancy of their inherited built forms is diminishing, succumbing to evolving living patterns and contemporary architectural tastes. As developmental replacement is inevitable, the task, then, is to understand the genius loci, and sensitively reinterpret some of the original character and persistent forms so that identity—whatever it might have meant—is reinterpreted and given a place in perpetuity.



Congenial architecture undifferentiated from the orangutan's habitat.



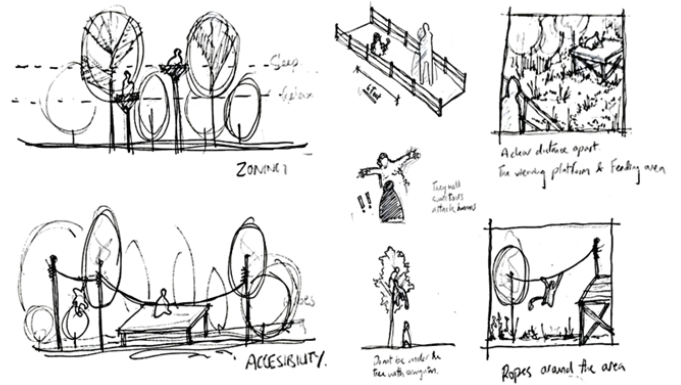
3.1 Behaviour Analysis

According to Cannon (2017), orangutans prefer interlocking canopies that allow them to move from tree to tree, orangutans will descend to the forest floor to reach another tree in search of food or branches for their nests. That behavior does, however, come at a cost as it takes more energy, and the stroll makes them vulnerable to predators and diseases that can't reach usually them in the treetops.

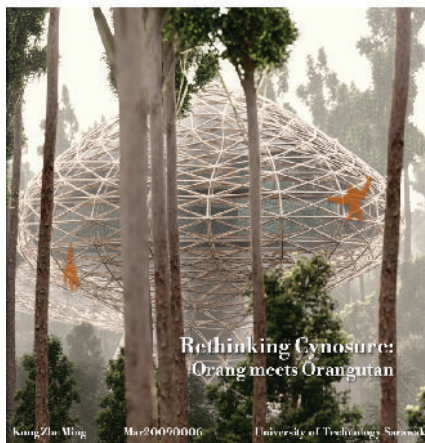
Physical contact with the orangutans is not permitted, and is in the best interest of the orangutans (Orangutan Appeal UK,

n.d.). Orangutans are very susceptible and vulnerable to human diseases, and therefore exposure is strictly regulated to reduce as far as possible any potential infection. In addition, human contact is kept to a minimum, not only for the safety of the orangutans but to avoid unnecessary risks to visitors (orangutans are very strong and as wild animals can be unpredictable).

To ensure their best possible chance of survival once they are eventually released back into the wild, dependence or familiarity with people is strongly discouraged.



CYNOSURE



Rethinking Cynosure:
Orang meets Orangutan

Kong Zhe Ming Mar 20090006 University of Technology, Sarnack

Built canopy in the natural canopy.

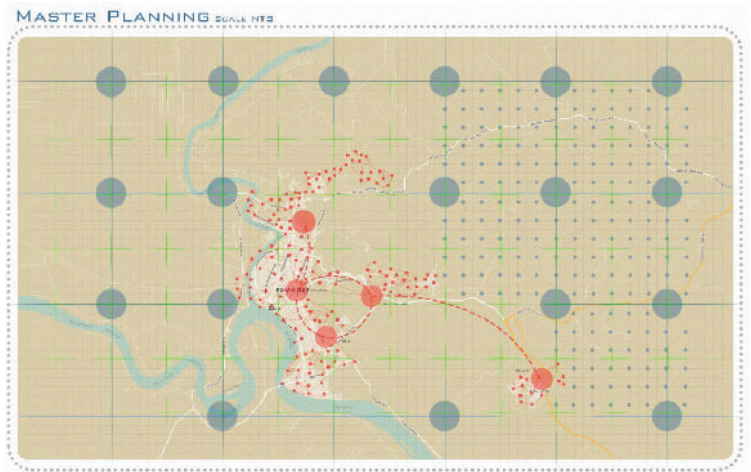


Prioritizing the primate, rejecting the recti-linearity of man.

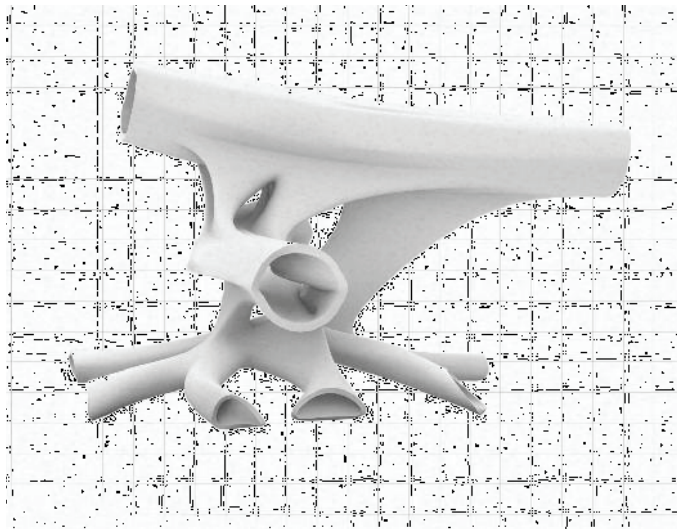
VERTIPORTATION: Towards an architecture of drone accommodation.

Design Thesis by Thomas Tiong Xun Xian
https://www.instagram.com/thomas_6_73/

From the fictional self-tightening Nike sneaker to the not-fantasy "Back to the Future" movie, and to the creation of the hoverboard, mankind has defined and tested the possibilities of technology throughout centuries. How do we make the imagined real? They have continually asked about technological advancement that will be entrenched. Drones, once imagined, are here to stay, and will one day—with the fusion of artificial intelligence—transport us into another level of existence. It will be a world where the automobile has been replaced as the primary means of travel and mobility. My thesis examines a system that is an algorithmic network for unmanned aerial vehicles (drones) that is organised/facilitated/dictated by nodal terminals blended into towns and urban centres, be they old or yet to come.



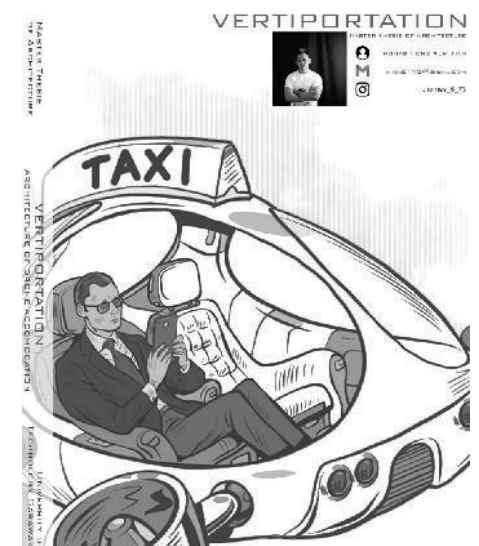
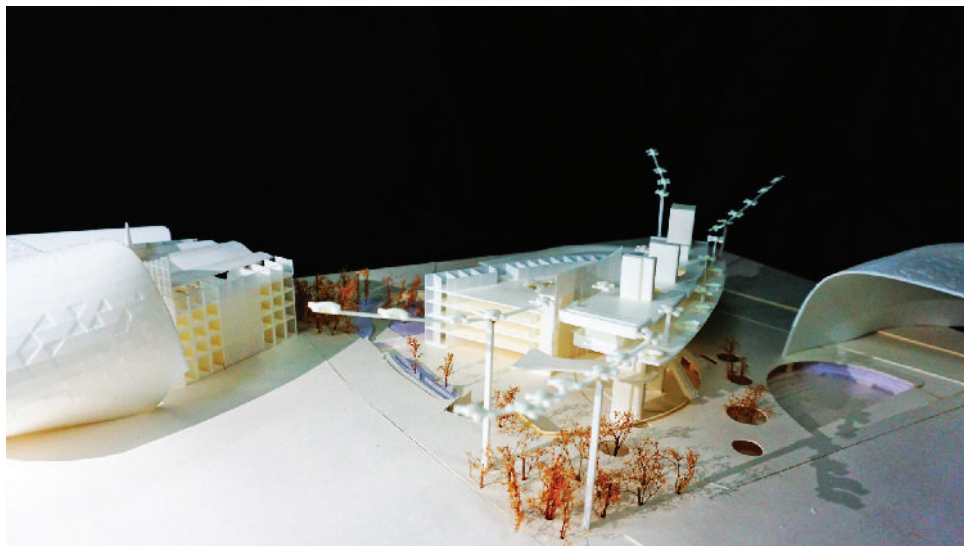
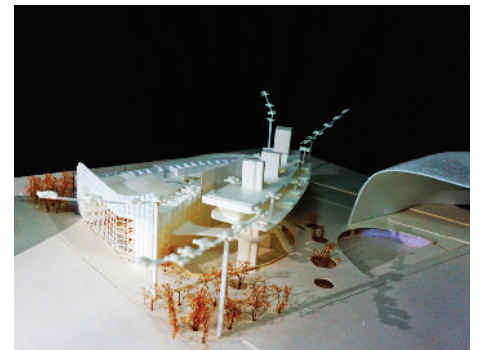
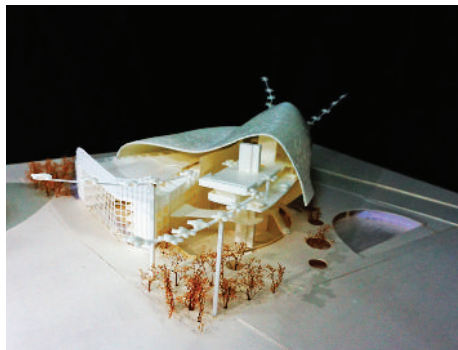
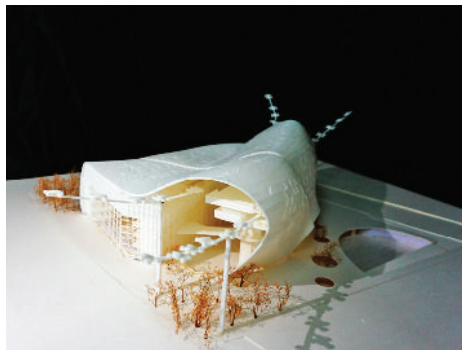
Vertiportation – a future transportation system that amalgamates a state matrix (blue) and an adaptive matrix for existing organic conurbations (pink)

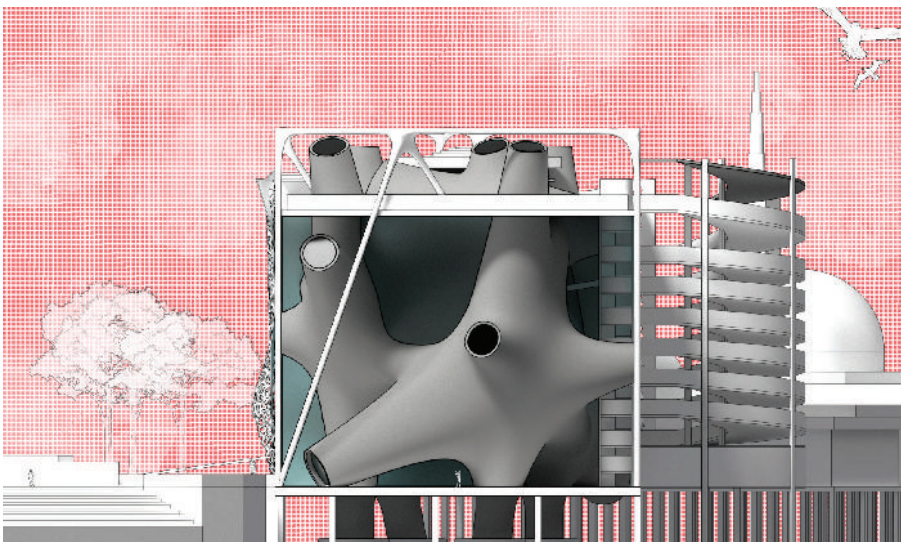


Exploratory model.



A node of the adaptive matrix fuses drone terminal and mall



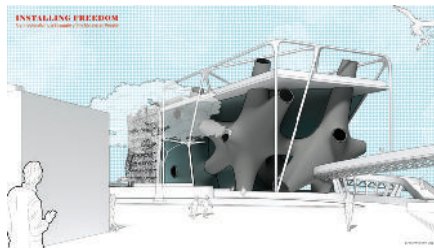
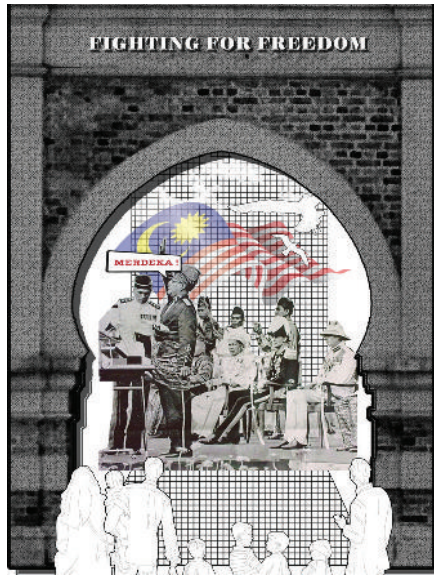


Elevation of Museum of Freedom facing Darul Hana Bridge.

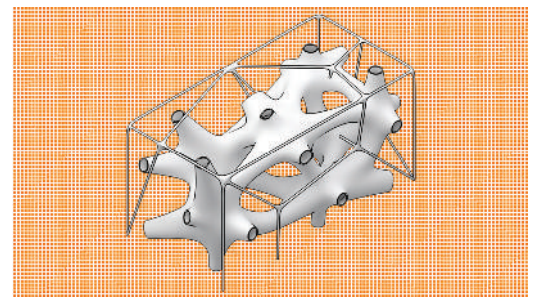
**INSTALLING FREEDOM:
Architecturalizing a struggle
of the Malaysian People.**

Design Thesis by Roy Wee Chin Giap.
behance.net/CrwcG

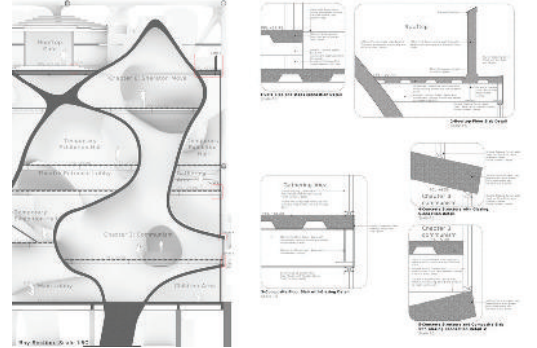
How do we present a narrative through architecture in a way that demonstrates its distinguishable plot-acts without losing the cohesive wholeness of the story's main theme? This design thesis extracted six chapters from the historical experience of the people of/in Malay(sia)—from the onslaught of colonialism that began with the Portuguese invaders and which was followed back to back by the Dutch and the British, making the first chapter in an account of the common man's fight against subjection. With the remaining chapters—The Japanese Occupation, Communist Insurgency, The Independent Nation, Bersih Uprising, and the Phenomenon of The Sheraton Move—I posit a subjective history of a people's struggle for freedom that stretches from subjection to subjugation.



Theme-Issue-Architecturalization.



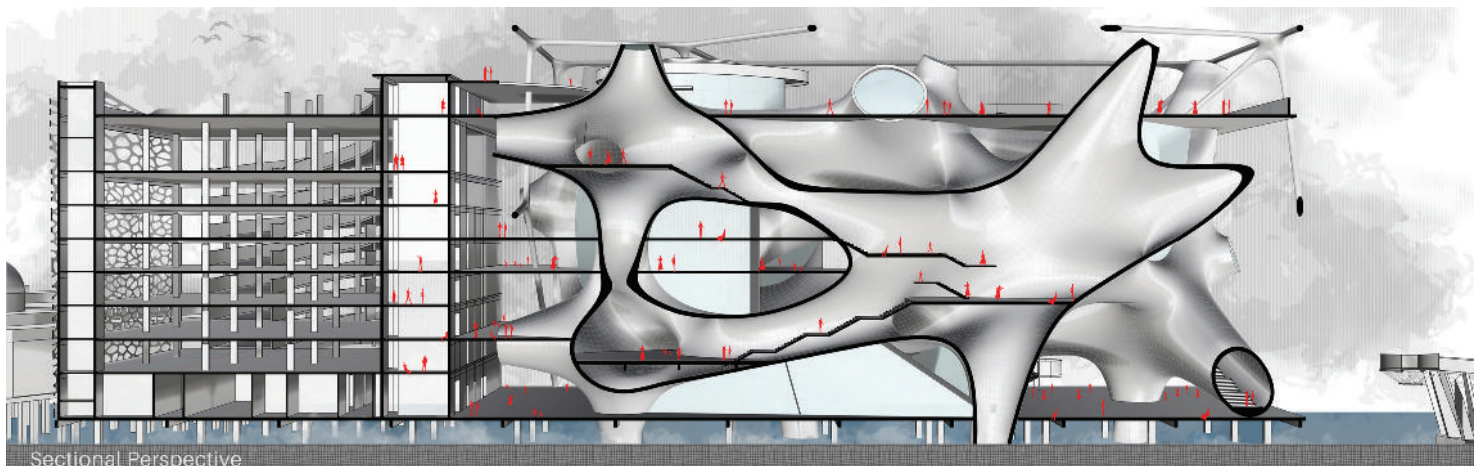
Framed and interconnected history.



Details of In situ reinforced concrete and steel-framed construction.

The narrative is architecturalized as a cross between a museum of phenomenological spaces and a semiotic landmark. Following Libeskind's symbolic consciousness (Jewish Museum), Orwell's totalitarian dread of "the Big", and Ito's architectonic language (Taichung Opera House)—among other literature and precedents, this thesis-building is located in an urban heritage site in Kuching, Sarawak to intentionally provoke conversation by being juxtaposed against a colonial prison, the humble man's shophouses, a modern mosque and an engineering feat of a bridge that leads people to the State Assembly Hall. The thesis finds that folding architecture can convey the soft and emotive aspects of a people's experience over time as much as it can be an imposing installation in the city landscape to constantly remind us of the ongoing dynamics of a society in the process of formation.

END



Sectional Perspective

UNIVERSITY OF TECHNOLOGY SARAWAK, INDUSTRIAL ADVISORY PANEL (IAP) VISIT 2022

by Ar. Brendan Tong



Afternoon Panel in action.



Group photo with students

On the 16th of June 2022, University of Technology Sarawak (UTS) hosted a discussion between the five members of their Industry Advisory Panel (IAP) and their staff and students. The purpose of the session was to deliberate the Bachelor of Science in Architecture (Hons) and Master of Architecture programs offered by the school, so as to ensure they are in line with the current industry needs. The invited panel members were as follows.

Dato' Ar. Dr. Ku Azhar Ku Hassan

Director of East Design Architect Sdn Bhd, Penang

Ar. Jafri Merican Bin Din Merican

Principal of Jafri Merican Architects & Associates Sdn Bhd, Board Member of Lembaga Arkitek Malaysia (LAM), President of Association of Consulting, Architects Malaysia (ACAM)

Ar. Nurina Binti Matnor

Principal of Arkitek Nurina Matnor, Kuching

Ar. Tong Jia Chian (Brendan)

Head of Unit of JKR Sarawak Central Regional Design Team (RTD)

Ar. Che Wan Ahmad Faizal Bin Che Wan Putra

Principal of Chewan Architecture Sdn Bhd, Selangor

The one - day event was divided into two sessions, with the panel meeting the staff in the morning, followed by a design talk and forum with the students in the afternoon.

On behalf of the panel, I like to thank UTS for their hospitality throughout the session, and hoped that the school had benefited from our views and opinions. I also wish to congratulate the students of the program; past, present, and future alike, in their fortune to be able to seek education from a well-structured program within their beloved state of Sarawak, and I wish them all the best in their future endeavour.

END

OUR PARTNERS



Contributing to Architecture in Sarawak

We specialize in a variety of residential and commercial glazing systems

- INFINI
- EUROGROOVE
- SOLIDE
- BI-FOLD & Laminated Glass

Seng Lee Glass Sdn. Bhd.
成利玻璃有限公司

Lot 2005, Jalan Semaba, Batu 5, 93250 Kuching, Sarawak. (387670-T)

☎ 082-576969 ☎ 082-579955

✉ info@sengleeglass.com

🌐 www.sengleeglass.com



ROOFING
CLADDING
LOUVRES
CEILING
TRUSSES
SCREENS
FACADES

CONCEPT TO REALITY

Kuching Tel : +6010-982 0235 / +6082-496336

Bintulu Tel : +6012-852 8712

enquiry@imetal.com.my

OUR PARTNERS



L&C GLOBALNIAGA SDN BHD



www.globalniaga.net

+6082 333 929

+6082 336 929

kenlaw@globalniaga.net

Lot 1618, Sublot 10, Lorong 6A, Jalan Setia Raja, Muara Tabuan Light Industrial, Phase 2, 93350 Kuching, Sarawak, Malaysia.

GL BALNIAGA
A Brand You Can Trust

- Interlocking Vinyl Flooring
- Sport Flooring
- Bamboo Outdoor Decking
- Vinyl Sheet
- Gym Flooring
- Artificial Grass
- SPC Flooring
- Carpet Tile
- PVC Ceiling & Wall Paneling
- PVC Decorative Panel

LEADING PORCELAIN & CERAMIC TILE BRAND IN MALAYSIA

KINGRES
BEAUTIFUL TILES FOR LIFE

Contact us for more information:
 PUSAT PASARAN KERAJAMALAYSIA Sdn Bhd
 (Kuching) No. 158, Kuching Road, Block 111
 11200 Kuching, Sarawak, Malaysia
 Tel: +6082-451 057/ 457 057

SIMPLICITE
Light Grey (600x600mm)

Follow us!
 Facebook: @kingres
 Instagram: @kingresid
 Pinterest: @kingresid

THE SMART PROFESSIONAL' CHOICE FOR TILE ADHESIVES!

Davco BUILDING TRUST **Sika**

SIKA KIMIA SDN BHD
 Level 3, No. 42, Block C1, Saradise Kuching, 93350 Kuching, Malaysia.
 Tel / Fax : 082-288 766
 www.sika.com.my

UNILOK
STEEL ROOF & CLADDING

Sarawak Shooting Range

ONE-STOP CENTRE FOR STEEL ROOFING SOLUTIONS

UGI offers warranty against perforation due to corrosion for your roofing & walling application

UP TO **25 YEARS***

*warranty T&C apply

UGI.com.my | 082-439 257 | UGIProducts

ALL-WEATHER WALL CLADDING

"The IKEA Blue coated steel is from our premium high durable **envioSHIELD** series which provides a plethora of benefits when applied to architectural surfaces.



Resists dirt and self-cleans with rain.



Jotashield Ultra Clean with revolutionary AntiDirt Technology

Contact us today to have your project protected with Jotashield

Tel: 082-339958
Fax: 082-411863

Armstrong Flooring

Maximum flexibility and value for

Healthcare, Education, Residential & offices etc.



(Sarawak Exclusive Distributor)

+6082 333 929

+6082 336 929

kenlaw@globalniaga.net

www.globalniaga.net

Lot 1618, Sublot 10, Lorong 6A, Jalan Setia Raja, Muara Tabuan Light Industrial, Phase 2, 93350 Kuching, Sarawak, Malaysia.



Practicality and Convenience at Your Finger Tips: The All-New Lysaght BIM Object Collection



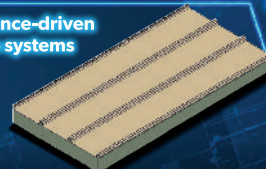
Download Today!



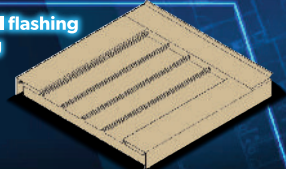
Single-layer metal cladding BIM objects



Performance-driven built-up systems



With essential flashing and capping detailing



NS BlueScope Lysaght (Sarawak) Sdn Bhd

+6082-333-621

www.lysaghtasean.com