

FLASH

13

Term 2021-2022 22nd Oct 2021
PPK469/01/2017(034673)

News+FLASH is the digital offspring of INTERSECTION. It is published digitally each fortnight for the foreseeable future, until we run out of ideas, articles or money.



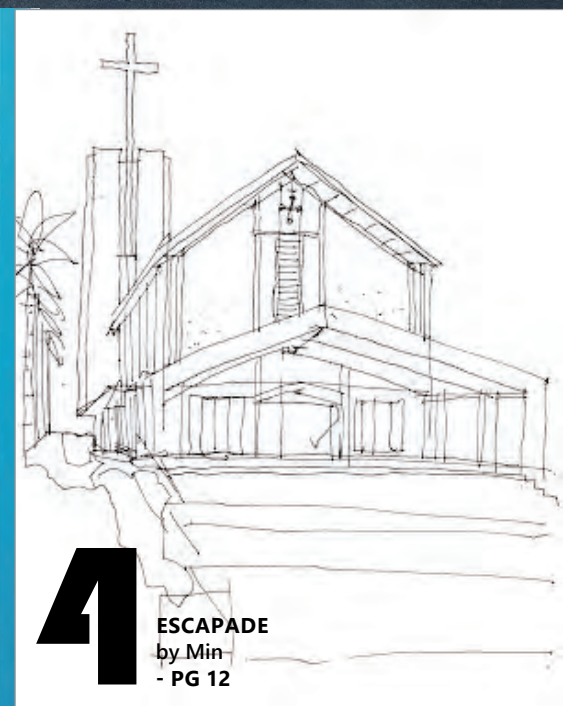
1 PROJECTS FEATURE:
SONG HOUSE
by SML Architects
- PG 2



2 PROJECTS IN PROGRESS :
LA PROMENADE PRECINCT GRANDE
by David Ong Architect
- PG 6



3 ID PROJECTS FEATURE:
YOFFEE CAFE
by INTODesign Lab
- PG 10



4 ESCAPADE
by Min
- PG 12





SONG HOUSE

by SML Architects

ARCHITECT'S STATEMENT

Brief & Response

Song House is an urban bungalow located at the fringe of a housing area off Jalan Song, Kuching. The client is a couple in their fifties who shared their house with their elderly parents and siblings.

The brief was to have a modern tropical house which is naturally ventilated, naturally lit, open yet secure. Natural ventilation was a key requirement as the family avoided air-conditioning as much as possible.

The site lies at the end of a residential cul-de-sac with one side facing a large open land which we were immediately drawn to as a source for views, wind and relief from neighbours. The design intent for this house was to embrace the natural elements and to harness the sun and wind as part of the living experience.

This was done through the introduction of parallel north-west/south-east spines to organize and layer the living spaces. These spines are either punctured or pulled apart at various sections to harvest light and air. Attached to the spines at opposite ends are two light and wind funnels that continuously draw air into the spaces within.

Architect	: SML Architects
C&S Engineer	: Perunding J.L. Maju
Contractor	: Syarikat Kah Seng Construction Sdn Bhd



Planning

Planning-wise, the house is divided into three main parallel zones or cores. The service areas containing the wet-kitchen, maid's room, washing and drying yards are concentrated on Western side. This single-storey section shields the living spaces on ground floor and on the first floor serves as a roof garden that shelter the bedroom beyond.

Next to the service zone lies the intermediary spaces containing the entrance foyer, dry kitchen and relaxation area. A central circulation spine then slices through the house, divides and serves this and the Eastern main living core of the house, containing the living room, dining, gymnasium and home-office.

This spine is expressed as a feature wall within the house with an attached timber walkway running through the length of the building. It then continues to journey outwards only to end at the garden walls, extending the living experience outwards.

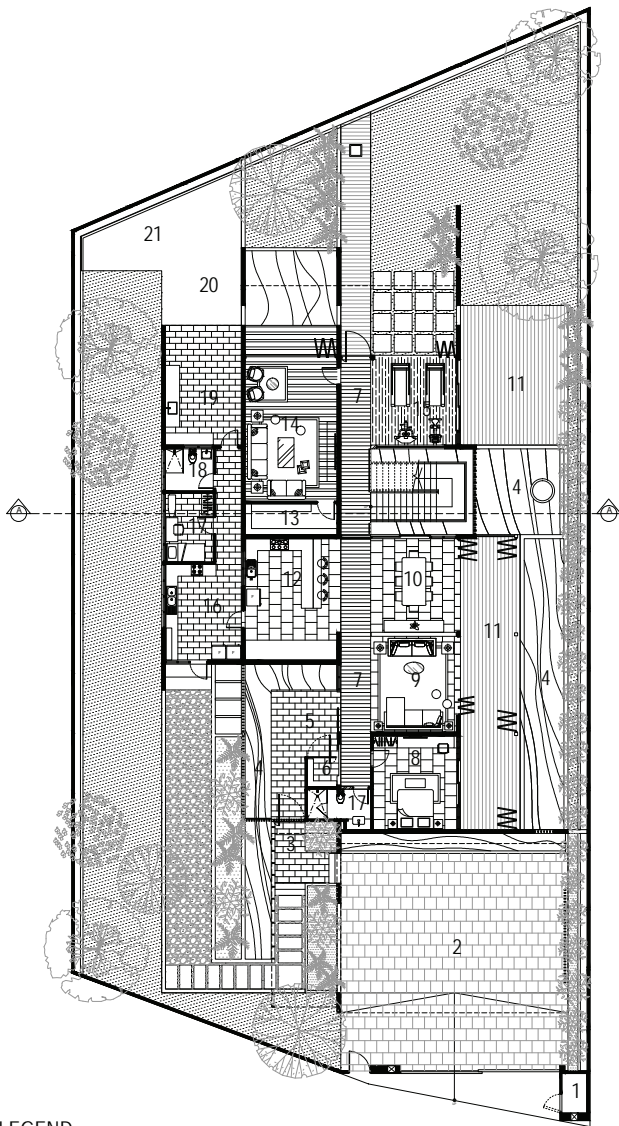
Terraces & Water

The main living core is sheltered by a band of transitional terraces with folding screens and cooling water bodies. Cooling water elements, terraces or courtyards are also placed around the house to serve their inner counterparts. The intent to harness as much natural light and ventilation as possible really set out how we approached the design and expressed the form.

CAPTIONS

1. Song House singing at dusk.
2. Naturally ventilated and lit, the screened staircase wind funnel allows users to securely move between floors.
3. Natural light and air are channeled into the first floor gallery serving the bedrooms. The other end of this gallery lies the main staircase which simultaneously helps the house breathe.
4. The main staircase floating above water. This is one of two 'funnels' that constantly draw in breezes and light into the whole house.
5. The screened main entrance foyer viewed from the garden. Permeability to views, natural light and air.



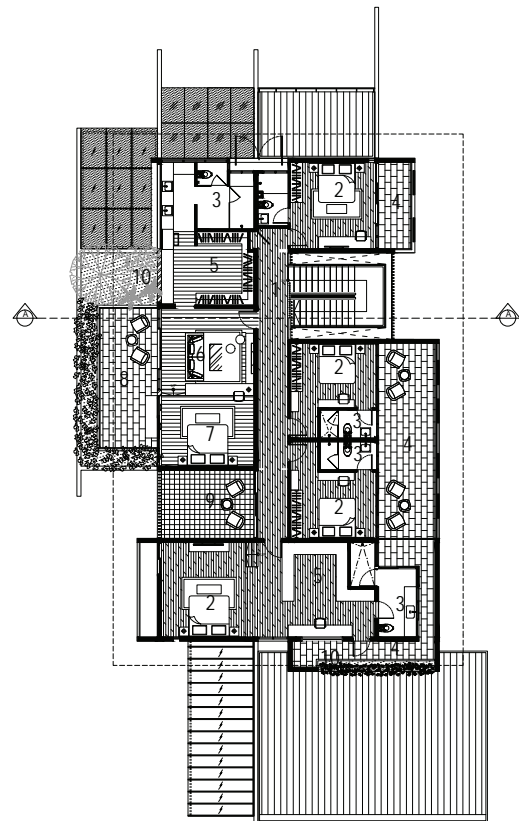
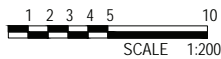


LEGEND

- | | |
|-----------------|-----------------|
| 1. BIN CENTRE | 11. TERRACE |
| 2. CAR PORCH | 12. DRY KITCHEN |
| 3. ENTRANCE | 13. STORAGE |
| 4. POOL | 14. FAMILY ROOM |
| 5. FOYER | 15. GYM |
| 6. SHOE STORAGE | 16. WET KITCHEN |
| 7. GALLERY | 17. MAID'S ROOM |
| 8. GUEST ROOM | 18. WC |
| 9. LIVING | 19. LAUNDRY |
| 10. DINING | 20. DRYING YARD |
| | 21. DOG HOUSE |



GROUND FLOOR PLAN

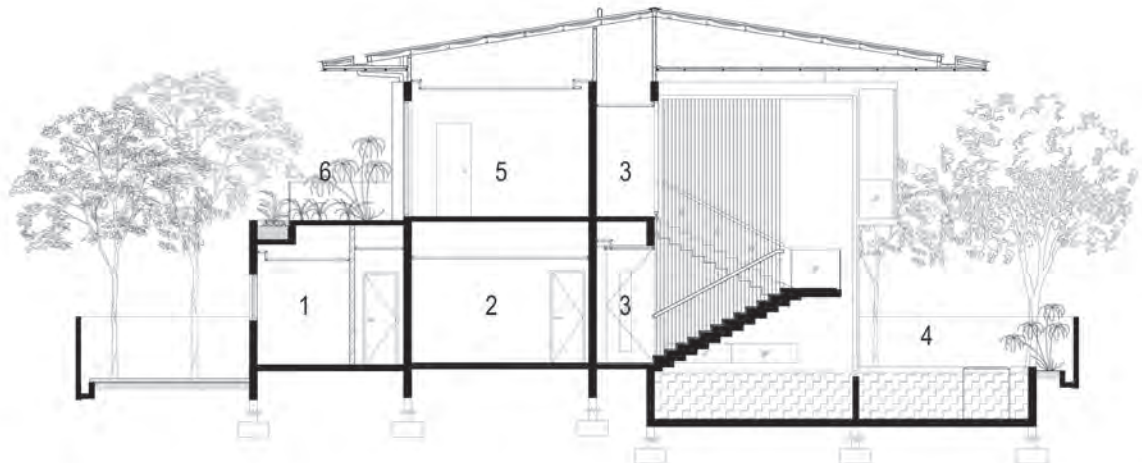
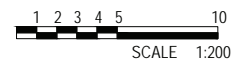


LEGEND

- | |
|------------------------|
| 1. GALLERY |
| 2. BEDROOM |
| 3. WC |
| 4. TERRACE |
| 5. WALK-IN-WARDROBE |
| 6. PRIVATE LIVING |
| 7. MASTER ROOM |
| 8. PRIVATE TERRACE |
| 9. CONVERSATION FUNNEL |
| 10. PLANTER |



FIRST FLOOR PLAN



LEGEND

- | |
|--------------------|
| 1. MAID'S ROOM |
| 2. STORAGE |
| 3. GALLERY |
| 4. TERRACE |
| 5. MASTER ROOM |
| 6. PRIVATE TERRACE |

SECTION A





6



9



7



10

Cooling Down & Lighting up

The planes are firstly punctured or pulled apart at various sections to harvest light and air. To really draw in constant breezes into and around the house and to make the spaces breathe, two open wind funnels were inserted at opposing ends of the house.

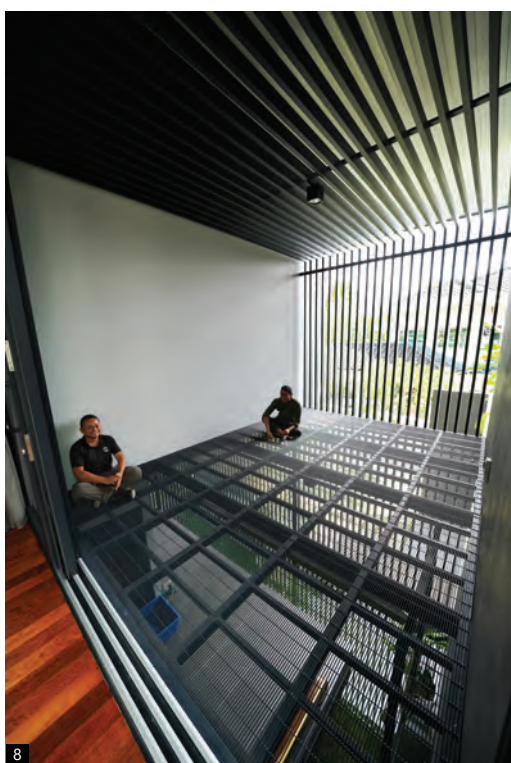
One of the funnels takes the form of a double volume screened entrance foyer with a permeable floating balcony. The other, a floating staircase and stairwell open to the elements. Both funnels are also integrated with waterbodies to further cool down passing air and then screened to filter direct eastern or western sun-light and for security.

Light on the other hand, is drawn into the building through large windows and doors, forming most of the external skin. A roof with deep overhangs hovers over the whole house like a big umbrella, in some areas overhanging up to 8 metres. On the upper floor, a sky-light lights up the central circulation spine that feeds the bedrooms and connects the two wind funnels.

END

CAPTIONS

- 6. The central spine & walkway slices through.
- 7 & 8. An 'invisible' floor hovering above the main entrance foyer. Letting light and air in as play happens.
- 9. The form speaks as the house takes shape.
- 10. Load-testing with project heavy-weights.



8



La Promenade Precinct Grande

by David Ong Architect

ARCHITECT'S STATEMENT

The 20-acre Precinct Grande is one of the residential precincts within the 200 acres of La Promenade Development by Hock Seng Lee Construction Sdn. Bhd.

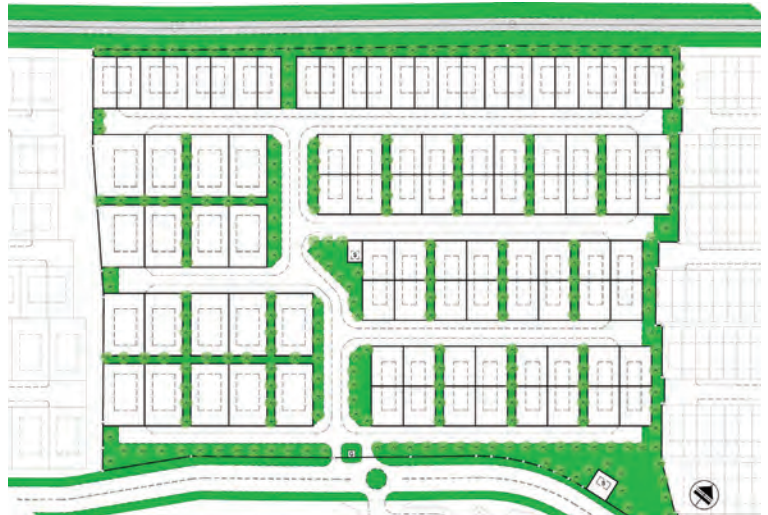
The Master Plan

This is the result of a re-planning exercise by David Ong Architect in 2016 into a unique master plan where every residential unit is directly linked to an open space. Inspired by green building and biophilic design concepts, Precinct Grande focuses not only on outdoor connections within itself, but also to the entire La Promenade open space as a whole.

The Open Spaces

The overall open space provision is approximately 18% of the development site area, comprising 2 main open spaces designed as recreational playgrounds, rest areas and community interaction spaces.

The rest of the open spaces are linear landscaped corridors/strips networked around the development to benefit all the residential units both as visual and physical connectors. This provides a safe and pleasant environment for active recreation activities such as walking, jogging and cycling.



Master Plan



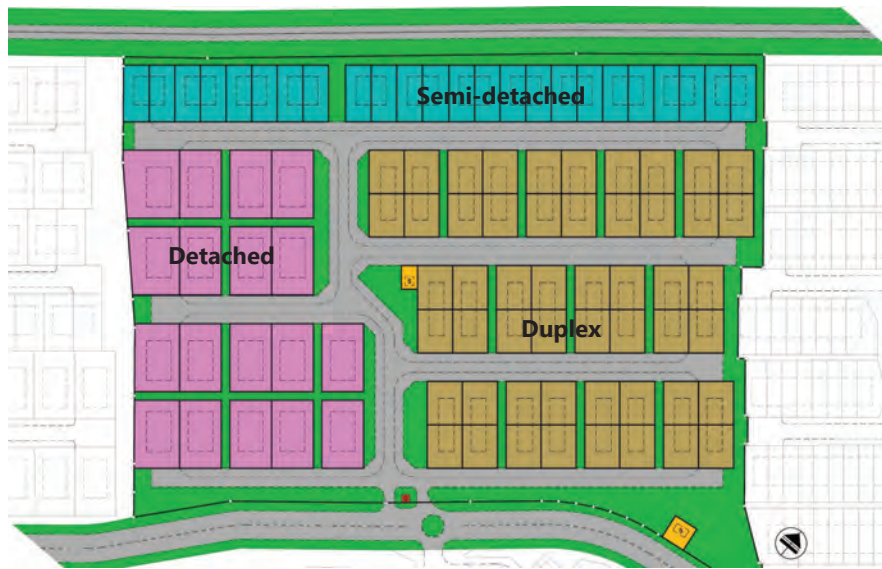
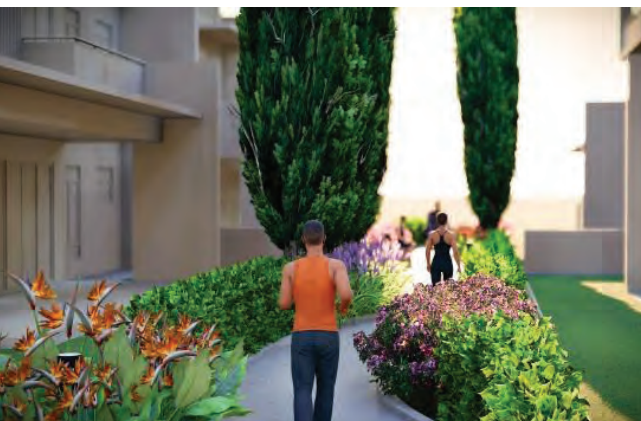
Open Spaces



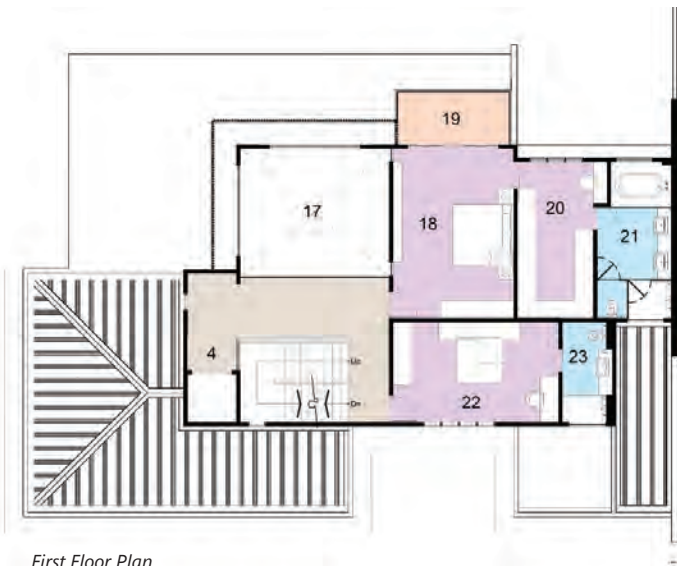
The Residential Plots

In this precinct, there are 18 detached plots, 52 duplex and 24 semi-detached plots with a low density of 4.7 units per acre. The detached and duplex designs are 3-storey while the semi-detached designs are 2-storey.

The detached and duplex plots are planned in clusters of 2 and 4 units respectively; each separated by a 4.5m wide landscaped strip. This greater separation between units reduced the visual impact of continuous and repetitive 3-storey units. Each of these 3-storey units effectively becomes an "external" corner unit which value adds to the development. The semi-detached plots on the other hand have a green space at their rear boundaries.



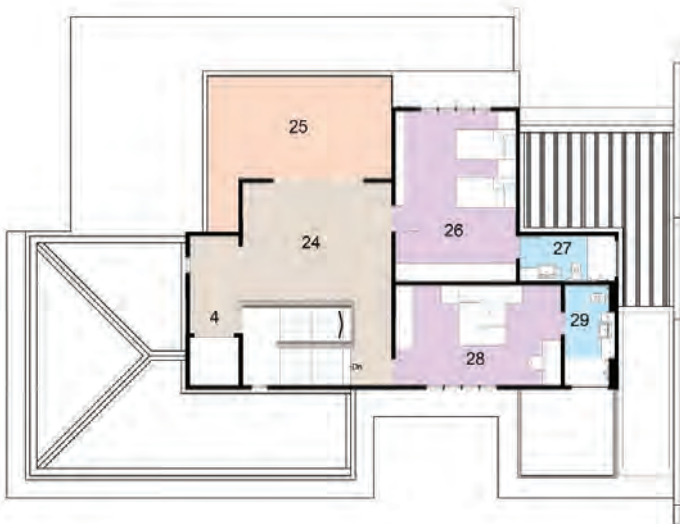
Client	: Hock Seng Lee Construction Sdn. Bhd.
Planner	: David Ong Architect
Architect	: David Ong Architect
Civil Engineer	: Jong & Associates
Structural Engineer	: J.K Bersatu Sdn Bhd
M&E Engineer	: Perunding CHL
Landscape Architect	: Intodesign Lab



First Floor Plan



Ground Floor Plan



Second Floor Plan

LEGEND

- | | |
|-----------------------------|------------------------------------|
| 1. Car Porch | 16. Patio |
| 2. Entrance Porch | 17. Void Over Living |
| 3. Foyer | 18. Master Bedroom |
| 4. Lift Lobby | 19. Balcony |
| 5. Living | 20. Dressing |
| 6. Dining | 21. Master Ensuite |
| 7. Parent's Bedroom | 22. Bedroom 1 |
| 8. Elderly Friendly Ensuite | 23. Ensuite 1 |
| 9. Store | 24. Home Gym / Multi-Purpose Space |
| 10. Powder Room | 25. Roof Terrace |
| 11. Dry Kitchen | 26. Bedroom 3 |
| 12. Wet Kitchen | 27. Ensuite 3 |
| 13. Utility | 28. Bedroom 2 |
| 14. Maid's Room | 29. Ensuite 2 |
| 15. Bathroom | 30. Garden |

The Duplex

Green building design principles and biophilic concepts are baseline requirements applied in the Duplex design in line with Precinct Grande Master Planning concept.

Natural ventilation by way of effective openings and natural lighting harnessing are important attributes of the Duplex design. Openings are shaded by large overhangs while the roofs are sufficiently insulated to reduce heat gain into the internal spaces.

The living spaces on the Ground Floor are served by big openings facing the linear landscaped corridors. Residents have the benefit of a 4.5m visual extension to natural settings as well as a direct access to the open space network.

Main bedrooms and multi-purpose space (as family room, study room or home gym) and balconies are also placed with the visual benefit of the linear corridor. Other special features include a Parent's room with an elderly friendly bathroom on the Ground Floor. These Duplexes appear like Detached units from the street front.

Both La Promenade and all precincts within are gated and guarded without the typical fencing and gate which allows a seamless access to each unit along a visually pleasant streetscape.

END



Classic Type



Modern Type





YOFFEE CAFE

Good Food Good Mood

Written by Lam Choi Suan (INTODESIGN LAB)

"We are going to open a cafe at the SGH, can you help us to design and build it in 2 months?"

I was engaged in this job a week before rumors were spreading about a full lockdown in Sarawak. In view of this, I was quite amused by the adventurous spirit of the business owners, venturing into an *"unbranded"* cafe when franchise cafes are the all-time favorite for cafe goers. From inception to completion, this project was built with a tight budget (*well... in business, who doesn't want to earn the most with the least expenditure*) and limited resources due to the lockdown. The project team overcame the challenges such as closure of factories, limited materials supply due to warehouse closure, restrictions on the number of workmen, and even travel restrictions from place to place.

For commercial design, the designer needs to understand the products and brand of the business. I was invited for a few rounds of food and drink tasting during the process of branding and planning for operation before designing take off. Their signature drink product - fruit yogurt with smooth chewy seaweeds crystal balls is rather refreshing visually (*even before tasting it*) especially the soft layers of colors when served in the see-through cup. I believe the serenity of pastel colors is the color of self-care, brings wellness, calmness, and comfort, soothes the soul in the tension of the pandemic. Since the target customers for the cafe are the medical staff, the cafe is designed to create a dreamy ambiance with a semi-open shop front through the lightweight translucent pivots screen bringing the daylight into the space as well as natural ventilation. The bright pink LED signage and logo (*designed in-house by us*) were intended to draw attention from the outside. The layout is a functional open plan with the flexibility to transform for dine-in and no dine-in operation mode, maximizing the dining area (*about 75%*) and maintaining sufficient operations area.

I believe creating a good ambiance brings good mood to people, as do good food. The cafe has become a hang-out place for busy medical staff wanting to take a break with cold drinks, hot food, and coffee, and maybe find something good for a day.



END



CAPTIONS

1. Color is the tool of designing, the wall of pastel colors palettes remind of childhood, clouds, sweets, daydreaming.
2. Combining translucent lightweight panels in pivoted and folded manner.
3. Multifunctional pivoted panels as screens, doors, advertising panels.
4. A simple serving counter for the main operation of the cafe functions as a display, receiving the order, preparations, payment, etc, is also a stage for the staff.
5. A touch of highly saturated color (turquoise) to pivots doors, furniture, and fittings to inject branding color into memory psychologically, for those who visited once will remember the location.
6. Exterior view along the walkway.
7. No fancy design for furniture and simple layout arrangement for the time being due to unpredicted SOP for cafe.
- 8 & 9. This will not be completed on time without the skilled foreign workers, our carpenter who traveled to the site for work with the risk of being fine, contractors, and fabricators who make every effort to deliver their jobs in the mists of high Covid cases haunting us.

Escapade

by Min



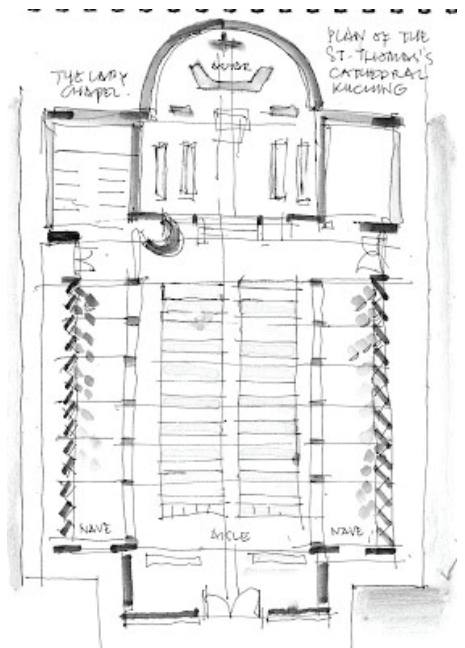
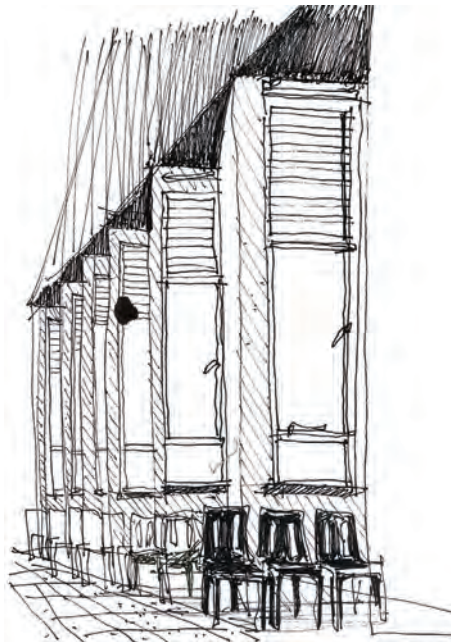
Last week, under a cloud of mounting deadlines, I chose to go for a bicycle ride instead of sitting down to work. Working from home has become an endless trail from Monday to Sunday, from morning to evening and through lunch as well.

The swimming pool announced that it was re-opening. This fits neatly into a morning's escapade; a bicycle ride to sketch outdoors (and even add water colours if the weather allows) followed by a swim before lunch. One of the luxuries of living in a small town (that calls itself a city).

Habit caused me to gravitate to the landmarks of my childhood so I ended up at the St. Thomas Cathedral; it was quiet and on higher ground (I had originally intended to sketch the buildings around the 'padang'). Habit also caused me to draw the church building once more, and appreciate its well thought-out details - climatic control devices, choice of material for the bell tower, the serrated walls of its aisle. Humble and practical details which work, for the most part - the glass louvre celestery must have let in misting raindrops for there was a later addition of some steel framed glass vents. Again this additional feature was humble and respectful, taking care to still allow light and air to enter and percolate.

I often tell my students not to simply sketch a building like how one takes a photo. Instead they should draw plans and imagine sections through the space - and in this way, they record more than what is seen on the surface. I also tell them that the church is part of a collection of buildings which typically frame the village green (our 'padang'); the Police Station, the Clinic, the Bank, the Courthouse, the Treasury, the Post Office, the Museum and of course the Church.

End of escapade - total time 120 minutes.



UPCOMING ISSUES...



OUR PARTNERS



Contributing to Architecture in Sarawak

We specialize in a variety of residential and commercial glazing systems

- INFINI
- SOLIDE
- EUROGROOVE
- BI-FOLD & Laminated Glass

Seng Lee Glass Sdn. Bhd.
成利玻璃有限公司

Lot 2005, Jalan Semaba, Batu 5, 93250 Kuching, Sarawak. (387670-T)

☎ 082-576969 ☎ 082-579955

✉ info@sengleeglass.com

🌐 www.sengleeglass.com



www.imetal.com.my

CONCEPT TO REALITY

Roofing | Wall Cladding | Louvres | Ceiling | Trusses | Screens & Facades

OUR PARTNERS



L&C GLOBALNIAGA SDN BHD



www.globalniaga.net

+6082 333 929

+6082 336 929

kenlaw@globalniaga.net

Lot 1618, Sublot 10, Lorong 6A, Jalan Setia Raja, Muara Tabuan Light Industrial, Phase 2, 93350 Kuching, Sarawak, Malaysia.

GL BALNIAGA
A Brand You Can Trust

- Interlocking Vinyl Flooring
- Sport Flooring
- Bamboo Outdoor Decking
- Vinyl Sheet
- Gym Flooring
- Artificial Grass
- SPC Flooring
- HDF Laminated Flooring
- Carpet Tile
- PVC Ceiling & Wall Paneling
- PVC Decorative Panel

LEADING PORCELAIN & CERAMIC TILE BRAND IN MALAYSIA

QUALITY GUARANTEED

TILES THAT BEAUTIFY ANY SPACE

BEAUTIFUL TILES FOR LIFE

Follow us on

@Kimgres

@Kimgrestiles

@KimgresTiles

Contact us for more information:
KIMGRES MARKETING SDN. BHD.
 [Registration No.: 198401001796 (114311-T)]
 4 1/2 Mile, Kung Pin Road,
 Off Penrissen Road,
 93250 Kuching, Sarawak,
 Malaysia.
 T : +(60 82) 451 567 / 451 017
 www.kimgres.com

DAVCO SKIM COAT MORTAR

PREMIXED to ensure good consistent QUALITY

ECO FRIENDLY

LOW CARBON FOOT PRINT

EASE OF USE

SIKA KIMIA SDN BHD
 Level 3, No. 42, Block C1, Saradise Kuching , 93350 Kuching, Malaysia
 Tel / Fax : 082-288 766

BUILDING TRUST

UNILOK
STEEL ROOF & CLADDING

Sarawak Shooting Range

ONE-STOP CENTRE FOR STEEL ROOFING SOLUTIONS

UGI offers warranty against perforation due to corrosion for your roofing & walling application

UP TO **25 YEARS***

*warranty T&C apply

UGI.com.my

082-439 257

UGIProducts

ALL-WEATHER WALL CLADDING

"The IKEA Blue coated steel is from our premium high durable **envioSHIELD** series which provides a plethora of benefits when applied to architectural surfaces.



MAJESTIC
PREMIUM INTERIOR PAINT



BEAUTIFUL
FLAWLESS FINISH



SUPERIOR
EASY CLEAN



LOW
ODOUR

Available in both Gloss and Silky Matt finish.

Contact us for more information Tel: +6082 339 958 Fax: +6082 339 959 Email: info@jotun.com.my



Bring the best
out of your design with
QuickMix® Wall & Floor
solutions



Building perfect walls & floors requires proper selection of quality materials at every stage. At YTL Cement, we are passionate about delivering the perfect finishing for you. So, do what the professionals do, design with QuickMix Wall & Floor solutions, and take the guesswork out of your project.

Find your Perfect Wall & Floor Solutions at
www.ytlcement.com



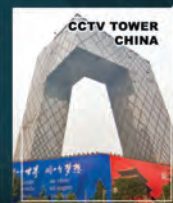
FRAMING THE NATIONS' ICON

We manufactured a comprehensive range of roll-formed steel roofing products and solutions, which are highly versatile and adaptable for different market segments.

For more than 50 years, our robust products and innovative solutions have been strengthening prominent buildings and international icons across Asia.



If you can
design it,
we can
make it.



NS BlueScope Lysaght
(Sarawak) Sdn Bhd

+6082-333-621

facebook.com/lysaghtMYBN



lysaghtasean.com