



SARAWAKIAN FIRMS EXCEL AT PAM AWARDS 2009



More....on Pg 6

FEATURE ARTICLE CONTENTS



PARK 2 @ PARK
LANE BY CC CHAN
ARCHITECT

P4



VISIT TO BEIJING INSTITUTE
OF ARCHITECTURAL
DESIGN (BIAD) -
MAY 2009

P8



MARKING OUT

P17

CONTENTS

BEIJING GOOD EATS

P10

BEIJING ADVENTURES

P11

LAUNCHING OF COMMUNITY
HERITAGE CONSERVATION
PROJECT - "REMINISING
FORGOTTEN TREASURE...
SINIAWAN"

P12

PROFESSIONAL GAMES 2009

P13

PAMSC DONATE A BOOK
PROJECT

P14

"PRACTICAL" TRAINING IN
SARAWAK

P15

'ONE STOP CENTRE' FOR
APPLICATION OF BUILDING
PLAN APPROVAL

P18

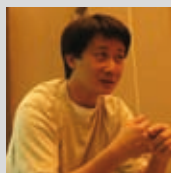


Coming events to watch out for.....

DESIGN FORUM 2010 - THEORY INTO PRACTICE

Date: 24 April 2010

Speakers:



Kevin Low, Principal
Small Projects,
Malaysia



Design Inc
Designer of CH2
Melbourne,
Australia



Professor Roger Fay
Head of Architecture
School UTAS,
Australia



Singh Intrachooto,
Principal - OSISU, Head
of Building Innovation
and Technology Program,
Kasetsart University of
Architecture Bangkok,
Thailand



The 34th PAMSC Annual General was held on 1st August 2009 at PAMSC center. First of all, I would like to thank all our follow members for their confidence in electing me as Chairman for PAMSC committee 2009/2010 and also retaining most of previous committee members except

for Ar. Law Kim Chui and Ar. Dominic Chuo. The committee would like to thank them for their contribution during their terms with PAMSC.

The new committee members are Ar. Ivy Jong and Ar. Tan Soon Kiat. We warmly welcome our four nominated co opt members. They are Ar. David Ong, Ar. Wee Hii Min, Mr Lee Chai Guan and Mr. Kelvin Phua. (Both Graduate members).

I also would like to welcome Ar. Ivy Jong, the new editor for the INTERSECTION. She will be assisted by Ar. Wee Hin Min and Ar. Stephen Mong, as the advisor. We warmly extend our thanks to Ar. Stephen Mong who has done an excellent job as the publication sub committee chairman in 2008/2009 PAMSC committee. I also have the confidence in the current publication sub committee which led by Ar. Ivy Jong, shall be able continue

and spearhead their plans to bring INTERSECTION to new heights.

The committee would also like to extend sincere thanks and appreciation to our immediate past Chairman, Ar. Ng Chee Wee for his invaluable contribution and hard work during his last two terms as the PAMSC Chairman. I hope that the current committee can live up to the fine and strong teamwork which has being established in PAMSC. We aim to maintain the strong dedication in the new committee so to achieve our objectives and be ready to face new challenges in the coming year!

Wishing you all a blessed and great year ahead!!

Ar. Desmond Kuek
Chairman
PAMSC



Ar. DESMOND KUEK (Chairman)
Ar. MIKE BOON (Deputy Chairman)
Ar. PETER WONG (Vice Chairman)
Ar. STEPHEN MONG (Honorary Secretary)
Ar. STEPHEN LIEW (Honorary Treasurer)
Ar. NG CHEE WEE (Immediate Past Chairman)

Committee Members:
Ar. BONG JOON HIN
Ar. KHO MENG KANG
Ar. KEVIN WONG YII SING
Ar. TAN KIAT SOON
Ar. IVY JONG
Ar. CHAN KHENG LEONG

Absence in photo:
Ar. DAVID ONG
Ar. KEVIN ONG YII SING
Co Opt Members:
Ar. LEE CHAI GUAN
Ar. KELVIN PHUA
Ar. WEE HII MIN
Ar. DAVID ONG



PERTUBUHAN AKITEK MALAYSIA SARAWAK CHAPTER (PAMSC)

www.pamsc.com

2nd Floor, Sub-Lot 56, Jalan Wan Alwi, Lot 7915 Queen's Court, 93350 Kuching, Sarawak.
Tel: 082-457182 Fax: 082-451180 E-mail: pamswk@streamyx.com

Greetings and salutations!!

With the encouragement from my fellow architects (and their promises to be part of the editorial team!) I have been entrusted with the publication of 'INTERSECTION'.

This is the 'new' committee's inaugural issue. As it always will be, the issue is a working progress and so, we humbly apologize should there be any short comings. (Let us know constructive criticism is most welcome.)

Our editorial team is indeed delighted to once again present you with our latest issue of INTERSECTION; our chapter's newsletter to inform our members on the happenings within the Sarawak architectural community. We will also highlight the developments and efforts made within the chapter with various statutory and institutional bodies for the interest of the architectural profession.

INTERSECTION can only be as good as the contribution made by our fellow members. (As too with PAMSC, I might add.) With INTERSECTION, we hope to further create and foster

more awareness and hopefully develop a more intimate sense of community for Sarawak's architect within and abroad.

It is with this vision that we open the floor (so to speak) and warmly invite all fellow members to be part of the editorial team.

We would love to hear from YOU... your news, your work, your opinions (if it's printable!!), your sketches, and your ideas.... after all, this newsletter is for you and should be about you!

Last but not least, as we embrace the 2010, on behalf of PAMSC committee, we wish one and all a happy, happy new year!

Ar. Ivy Jong
Editor



Please contact the secretariate at 082-457189 (Melinda) or mail: pamscintersection@gmail.com should you wish to contribute.

PAMSC SUB-COMMITTEE STRUCTURE 2009-2010

**GOVERNMENT
LIASON**
Chairperson
Ar. Stephen Liew
Other Member
Ar. Bong Joon Hin

EVENTS
Chairperson
Ar. Mike Boon
Other Member
Ar. Ken Chan
Kelvin Phua (Graduate)
Ar. Tan Soon Kiat

**PUBLICATION &
INFORMATION**
Chairperson
Ar. Ivy Jong
Other Member
Ar. Wee Hii Min (co-opt)
Ar. Stephen Mong (Adviser)

**CONSERVATION &
SUSTAINABLE DESIGN**
Chairperson
Ar. Ng Chee Wee
Other Member
Ar. David Ong (co-opt)
Ar. Mike Boon (Adviser)

IT & EDUCATION
Chairperson
Ar. Kevin Wong

GRADUATES
Chairperson
Lee Chai Guan

成利玻璃有限公司
SENG LEE GLASS SDN. BHD.
(387670-T)

INFINI
SL38

SOLIDE
SL28 / SL886 / SL18

BIFOLD
SL86

eurogroove



Seng Lee Glass
Your Right Choice

☐ Security ☐ Beauty ☐ UV Screening ☐ Acoustically Insulating

Agent of :

SAINT-GOBAIN
GLASS

World Leader in Glass Manufacturer



Casement Window



Top Hung Window



Sliding Window



Sliding Door



Swing Door

Lot 9575, Jalan Pending, 93450 Kuching, Sarawak, Malaysia.

Email : info@sengleeglass.com

Tel : + 6 082 337733

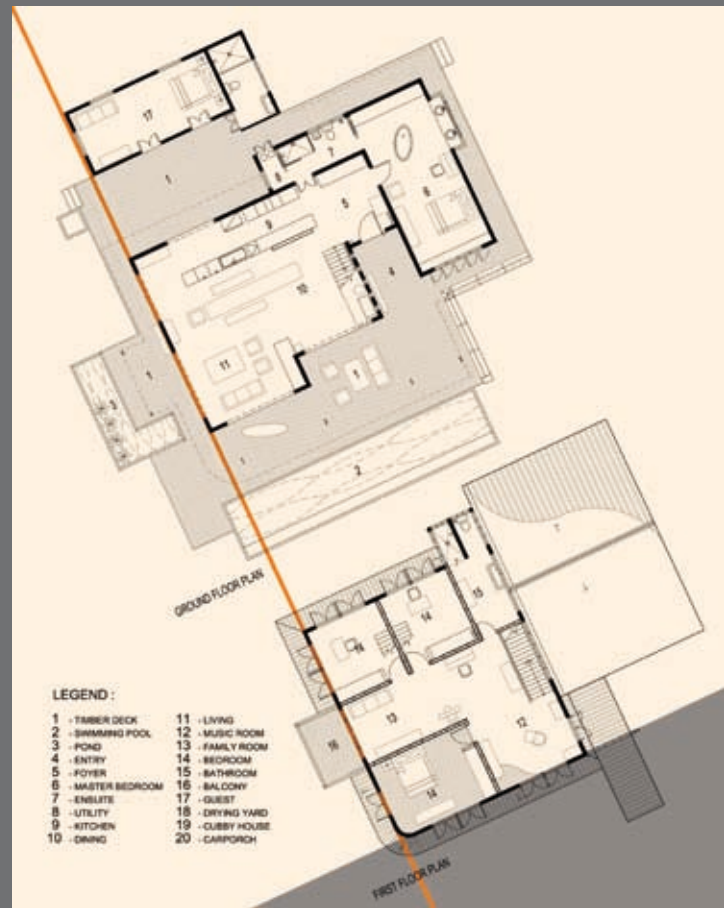
Fax : + 6 082 332255

www.sengleeglass.com



PARK 2 @ PARK LANE BY CC CHAN ARCHITECT

Park 2 is renovated Kampong style house in the centre of Kuching; the architects CC CHAN decided to retain the existing house and mould it to suit the client's requirements. The result is a modern house with an old soul; one which manages to retain and even re-capture the nostalgia and personal history of the original house. INTERSECTION interviewed the Architects for the project; CC Chan and Megan Chalmers.




BEFORE
AFTER

What made you consider keeping the old house? Some architects would consider demolishing the house and starting with a 'clean slate'

Our Client originally wanted to demolish the old house and start afresh. But we thought that it is more appropriate to retain the original house with its spirit intact and use it to embellish the client's brief. Furthermore, certain requirements by the Authorities made it more suitable to regard the project as a renovation.

Tell us what you did to capture the essence of the original House?

The Authorities required the original footprint to be maintained; leaving us no choice but to re-model the house from the inside. This turned out to be a blessing; the ground floor was opened up to achieve a more modern plan and to merge the interiors with the garden. Actually, this was more in keeping with the original drawing of the house. We kept only one room downstairs with the other bedrooms on the first floor; creating an open undercroft with a timbered upper floor – similar to a Kampong Style House.

We used materials such as Belian, raw concrete, rusted steel and the cement screed floor to reflect the Spartan quality of a kampong house. Modern materials such as stainless steel are used sparingly to enhance and reinforce the pared back ambience of the house.

Were there any "modern" features to this Kampong house?

From the onset, the client was adamant that they do not need air-conditioning – so we designed large openings for the ground floor living spaces. These openings allow good cross ventilation, and could be shut easily through the usage of remote controlled roller shutters. The swimming pool in the front of the living room can be considered a modern luxury; though it also has a spare quality through the use of cement screed as internal pool finish.

How much of the original material did you use in the new house?

We tried to recycle as much material as possible. The original cladding and timber structure of the house was reused to build the Guest House; the original timber staircase was reused but extended in steel.

We opened up the roof space to expose the trusses; this expression of integrity also adds to the volume and airiness of the First Floor.

What are the most challenging aspects of this renovation?

Perhaps experimenting with materials that are not commonly used in Kuching. Fortunately, we had a good Contractor who was willing to try things out and experiment with us. Examples include using off form concrete for walls, reusing the original timber to build the Guest House, bamboo from the garden for a screen in the Guest bathroom and modifying an old sewing table to support the wash hand basin.

Does Park 2 reflect your practice's design approach?

Yes, we like the idea of having a journey through the house, with the unfolding of spaces and views, sometimes with an element of surprise. We like our buildings to have a story to tell. We design our houses to be private while maintaining the openness suited to tropical living.

We prefer the use of materials in their most natural form....off form concrete, rusted steel beams, natural timber, polished concrete floor and the exposed mechanism of the roller doors. All these features in Park 2 are testimony to our design belief.

Did the client participate in the design and construction process?

Yes, we were fortunate to have clients whom we could collaborate with the design and construction process. Further, they had a very authentic collection of antique furniture and artworks, and they had clear ideas how these would fit into the house design.

They share our passion for using raw materials and encouraged us to experiment with materials and interesting ways of detailing; to reduce the budget and come up with something different.

We understand that this house was shortlisted for a PAM Award, tell us about it. How has this affected your work attitude?

We were very pleased to be shortlisted for a PAM award because it shows that our design has earned the recognition of our peers. It gives us the confidence to propose alternative design solutions to our future clients. And of course, it gave us a good excuse to take our office to the PAM annual dinner in Kuala Lumpur.





SARAWAKIAN FIRMS CLINCH TOP PRIZES AT 2009 PAM AWARDS

The Chew House @ Kuching

Two Sarawakian firms received top prizes at the recently held 2009 PAM awards night. Design Network Architects Sdn. Bhd. emerged as the winner in both the single-residential building category and the commercial building category. The winning entries are the Chew House and the Ark Cafe & Gallery. This is the fourth year in a row that Design Network Architects Sdn. Bhd. has won prizes at this annual event.

Ar. Mike Boon, another Sarawakian architect received an honorary mention for the M&M House in Kuching while Gordon Architect's entry, Sarawak Rainforest & SFM Discovery Centre in Bintulu made it to the list of shortlisted entries.

The Chew House was commended for being 'an unpretentious scheme that displays a high level of craft in its planning and response to its climatic and physical context'. This residential house is located on a piece of land adjacent to the old family house at Central Road, Kuching and continues the generational thread of the clan's foothold in this old pre-war residential precinct. While the house seeks to reflect the owner's contemporary lifestyle, it is mindful of the precinct's history.





The Ark Cafe & Gallery @ Sibü - view from the street



The Ark Cafe & Gallery @ Sibü - the inner sanctuary

The Ark Cafe & Gallery is conceived as part tree house, part cafe, viewing platform and urban landmark in Sibü. The catalyst for this project grew from two mature rain trees on the riverside esplanade. These trees provide a quiet backdrop and act as a lush green wallpaper that changes hues and characters throughout the day to all the dining spaces. The jury commended it for being 'a well articulated and yet unintrusive landmark at the riverine esplanade'.

The annual PAM Architectural Awards, organized by the Malaysian Institute of Architects, are conferred to recognize Malaysian architects who pursue excellence in design. The award promotes 'the advancement of quality built environment that has beneficial, social, physical and cultural impact in Malaysia and to recognize the diversity of Malaysian Architecture'.

The Awards programme is arranged so that the selection and recognition of winners serve two purposes; Firstly, PAM benefits from an information archive on important projects by Malaysian Architects and secondly, the public promotion of local architects, quality architecture as well as the recognition of the informed client.

WINNERS OF PAM AWARDS 2009 (PERTUBUHAN AKITEK MALAYSIA)

Category 1 - Single Residential Buildings

- Winner : Chew House

Design Network Architects Sdn.Bhd

Category 3 - Interior Design

- Winner : GSC 13 @ Pavilion Kuala Lumpur

Arkitek Maju Bina Sdn.Bhd

Category 4 - Commercial Buildings

- Winner : 1) The Ark Café and Gallery

Design Network Architects Sdn.Bhd

- 2) One Sentral Office Tower

Veritas Architects Sdn.Bhd

Category 6 - Adaptive Re-Use Buildings

- Winner : Back Home

Masyerlin M.N. Architect In association with
MMN Design Sdn.Bhd

Category 7 - Industrial Buildings

- Winner : Hap Seng Star 2S Centre

Ar See Toh Yew Han

Category 8 - Special Category

- Winner : Melaka River Rehabilitation and Beautification

Focus Architects & Urban Planners Sdn.Bhd



M & M House @ Kuching - exterior view



VISIT TO BEIJING INSTITUTE OF ARCHITECTURAL DESIGN (BIAD) – MAY 2009



Beijing National Stadium

PAM Sarawak Chapter made a study tour to Beijing in May 2009. Included in the itinerary was a visit to the Beijing Institute of Architectural Design. The purpose of the visit was to understand a bit more about the architectural scene in China.

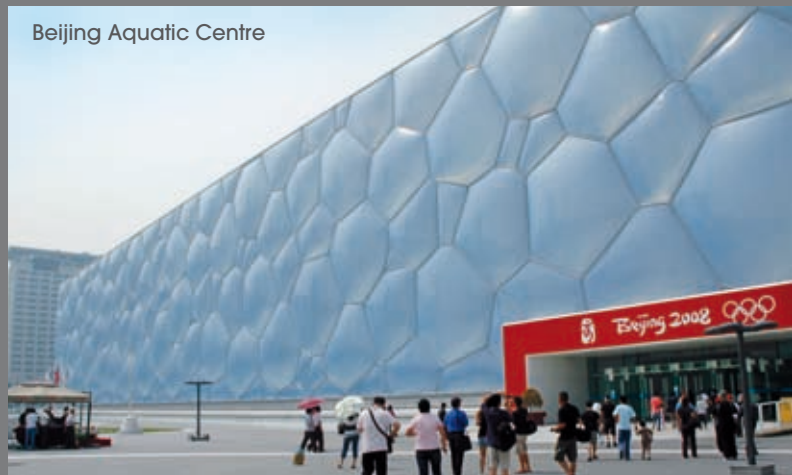
Architectural Practice in China is slightly different from other countries. Here the practice is dominated by huge state-owned design institutes. These institutes are usually confined to their geographical regions, but recent efforts in liberalizing the practice have opened up the field for the institutes to compete for jobs outside of their normal territory.

Established in 1949, the Beijing Institute of Architectural Design is the oldest and the biggest architectural design institute in China. It currently employs around 1,200 architects. The 2nd biggest design institute is probably in Shanghai.

BIAD is responsible for most of the major projects in Beijing, including all the Olympics Buildings. Foreign architects working in China will have to team up with the local architectural design institutes to carry through the project to detailed design and implementation stage, and being the largest and most established they have the greatest advantage. They are often the first stop for foreign architects looking for a local partner.

Due to the exposure to so many foreign architects practicing in China, BIAD has undergone very fast transformation into a modern organization. Instead of a traditional centralized

Beijing Aquatic Centre



top-down management, BIAD is highly de-centralized and organized into many different design studios. Each studio is managed by its own team of people, and operates quite independently. Remunerations are based on the performance of each unit, and the staff is allowed to apply for transfer to a different design studio as long as it is willing to take them.

The design studios are like smaller firms under the parent firm, and they have the protection of a big umbrella. Sometimes these design studios can break out to form independent practices, and this is actually encouraged. In this sense, BIAD essentially function as an incubator for architectural talent.

The Cummune At The Great Wall-See & Seen House by Cui Kai



The Commune At The Great Wall-Bamboo House by Kengo Kuma

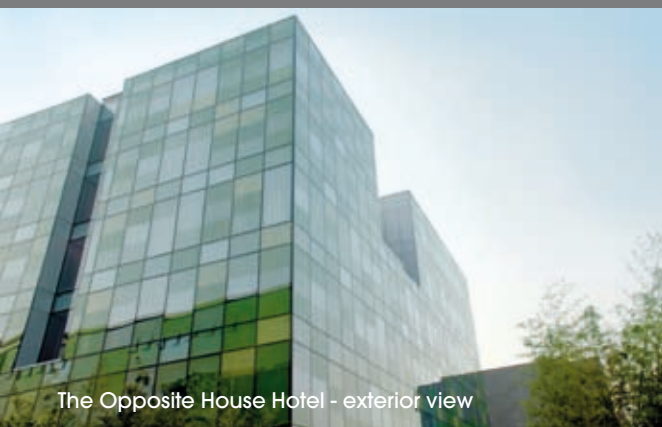




The Commune At The Great Wall-Reception Building



The Opposite House Hotel by Kengo Kuma



The Opposite House Hotel - exterior view



BIAD has a total of 6 branches. These are in Shenzhen, Hainan, Fuzhien, Sichuan, Chongqing and Xiamen. Shenzhen was the first branch to be established.

To become a Registered Architect in China, a graduate architect needs a minimum of 2 years practical experience. After that they can sit for a professional exam and if they pass, they can become a Registered Architect. The system seems to be quite similar to our Malaysian system. BIAD currently has around 600 Registered Architects. The starting pay for a graduate architect is around RMB 1,000. Besides local architects, BIAD can also employ foreign architects.

In order to ensure that the quality of design and drawings is up to standard, BIAD has a Quality Control Department which will carry out spot checks on the design and drawings. The firm is also ISO 9001 certified.

One lasting impression from the visit was how hot the meeting room was. We were in fact sweating. This was late spring and the outside temperature was quite warm, but the air-cond was not set at full blast. We later found out that China has a national policy to conserve energy, and the internal working temperatures are set much higher than we are used to in Malaysia. In fact the internal working temperature is around 26 degrees C – most Malaysians would be complaining! Perhaps this is one lesson we can learn from China in order to reduce our carbon footprint.

All in all, the visit to BIAD was an eye-opening experience. No longer can we remain complacent, thinking that we are far ahead of some of our Asian neighbours in terms of professional practice. Their speed of progress is astonishing, and soon they will be able to leapfrog us and beat us at our own game. It is time for us to buckle up!

By Ar. Ng Chee Wee



The Village At Sanlitun Shopping Centre

BEIJING GOOD EATS

Like any big city in China, Beijing is a food haven. As it has been the cross road of China for hundreds of years, the food in Beijing is a mixture of cuisines from all parts of China. Here are some of the interesting places to visit:

Guijie Food Street

Guijie or "Ghost Street" may have a name which sounds sinister, but it is actually named after the throngs of hungry patrons walking the street at all hours of the day looking for good food. This roughly 1 km of street houses hundreds of eateries on both sides, from simple hole-in-the-wall noodle stalls to lavish restaurants. The options are endless! Try the "Mala" restaurants for a bit of authentic local cuisine which the Beijingers love. Be warned that your tongue and mouth will be numbed for hours afterwards.



Wangfujing Food Street

Wangfujing Food Street is more of a tourist attraction than a serious food venue. A 1 km street is pedestrianized on one side and lined full of stalls offering a dizzying array of food – from meat skewers to desserts, soups, noodles, dim sums, etc. You can also get the famous "Ping Tang Hu Lu" – basically a candied fruit skewer, here. The more daring may want to try the scorpions, cockroaches, grasshoppers, seahorses, star fish, etc.



Quan Ju De Peking Duck Restaurant

Beijing is famous for the Peking Duck, and one of the most famous Peking duck restaurant here is Quan Ju De Peking duck Restaurant. They actually have many branches in the city. As a popular tourist destination, the prices are quite high, but it is worth trying for the experience. The Peking Duck here is not bad, but probably not as good as some of our better restaurants back in Malaysia.



Maison Boulud

Besides the traditional Chinese restaurants, Beijing now has a large number of upscale restaurants serving Western food. Maison Boulud is the first restaurant by famous New York French Chef Daniel Boulud outside of USA. It is housed in the restored former American Embassy Building – a handsome complex of Classical Colonial buildings which now accommodate several restaurants and bars. The food here is classic French. A dinner here would probably cost you around RMB400 per person without wine, but it's worth it for the experience.



Tengelitala Mongolian Barbecue Buffet Restaurant

Tengelitala is a Buffet Restaurant specializing in Mongolian Barbecue. The dinner comes with an elaborate show featuring Mongolian dancers. The show is about 1 hour long, and throughout the show you can revisit the buffet for more food. There is quite a large array of food at the buffet, including the famous Mongolian roast lamb. The cost is around RM150 per person.



Hutongs

The Hutongs are the old residential areas of Beijing. In the past, these areas were occupied by the officials and servants of the imperial court. After the revolution, the quarters were turned over to the masses as mass housing. Some of the courtyard houses – "Shiheyuans" are remarkably well preserved. Many of these have now been converted into boutique hotels, cafes and restaurants. It is worth wandering around in some of these Hutongs to find that obscure little place that few outsiders would know for the ultimate "Beijing Experience".

By Ar. Ng Chee Wee

BEIJING ADVENTURES

(Min's travel journal)



Locals dancing in the public parks; the diversity of age, skill and dress sense was impressive



The super-market's great great grandfather



In May this year, the PAM Sarawak Chapter invited its members to a study trip to Beijing; on the 'menu' was the promise of a sumptuous feast of Olympic architecture and cultural exchange. The Bird's Nest, the Water Cube and other buildings completed for the 2008 Olympics have been well documented by architectural journals; Architecture however, is to be experienced - to walk through her rooms, to gaze up at her ceilings and rub shoulders with her locals.



One of the locals



More locals 'hanging' out with comrades in the most well used corridor in China

The historical sites were thought provoking; the rutted cobbles of the Forbidden City echo the sound of ancient hoof beats and along a corridor leading to the Temple of Heaven, locals variously chat, dance, sing, play chess, practise English and Chinese calligraphy in the everyday of their lives. I realized then, that buildings aside; the highlight of my trip were the people that we met - inside and

outside the tour bus. After all, if people give Architecture its context, there is no shortage of context in Beijing.

Next year..Shanghai.



Calligraphy lessons at the Summer Palace



The distinctive silhouette of the 'dragon's backbone' of Mother China.



While the TVCC was burnt to a crisp; the CCTV appeared a tad undercooked for a high-profile project.



1937



TODAY 2009

Sarawak Heritage Society (SHS) and Wujiaoji (The Talent and Art Performing Group) have initiated a community-based heritage conservation project with Siniawan local community through the Siniawan Heritage Conservation Committee. This project is supported by BlueScope Lysaght (Sarawak) Sdn. Bhd. to deliver social corporate responsibility to the community.

Siniawan had been a vibrant town associated with mining and rubber plantation during different periods of its past. It has had a very interesting social and cultural history woven together by the co-existence of the Bidayuh, Malay and Chinese communities.

This project intends to rekindle the local pride and sense of belonging through a series of activities. Among the activities are research and compilation of local history, documentation and establishment of guidelines to encourage conservation of the historical buildings (tangible cultural heritage), and to develop programs for the continuation of the cultural traditions (intangible cultural heritage).

Acknowledging the fact that Siniawan in the near future may not be the main economic, industrial or agriculture centre, this project intends to bring Siniawan to public attention and to attract visitors. This has the potential to tap on the cultural tourism industry, which in turn helps to develop the local supporting industries. Through local participation, this project aims to develop a way to sustain the live of the township without greatly affecting the spirit of the place.

Through recent contact with Malaysian Nature Society (MNS), it was brought to our attention that Peninjau, located at the foothills of the Seremba Mountain, is a significant natural heritage site. This information was learned through the works of Alfred Russell Wallace who had been researching in Peninjau to develop his theory of natural selection during James Brooke's era, which is believed to have contributed to Charles Darwin's theory of evolution. As such, MNS has expressed their interest to contribute to this project.

Although the project started much earlier with a lot of preliminary works and background research, it was officially launched on the 23rd August 2009 at Swee Guk Kung Temple at Siniawan Old Town.

This was also in collaboration with the temple's main celebration. The launch was celebrated with local cultural performances put together for the first time by the local community on stage in front of the temple.

Since this is an on-going community conservation project, Sarawak Heritage Society and Wujiaoji invite and welcome all interested participants to join us in preserving an essential part of our Sarawak heritage.

For more information, please write to: sarawakheritagesociety@gmail.com



Launch night in August



Launch night in August



Mooncake Festival in September

Mooncake Festival in September



PROFESSIONAL GAMES 2009

Date : 01 October – 25 October 2009

Games played : Bowling, Golf and Badminton

Around 40 PAMSC members participated in this year Inter-Professional Games, games played are Bowling, Golf and Badminton. One month prior to the actual games event, training for each game were held at various sport venue and was fully subsidy by sponsors; ICI Dulux paints and Bluescope Lysaght . In total both ICI Dulux Paint and Bluescope Lysaght have sponsored 30 caps, 54 t-shirts and RM5,000 cash to PAMSC for on-going PAMSC activities purposes. Ar. Ng Chee Wee (Immediate Past Chairman) had also generously sponsored RM400 'Mr.Ho' dinning vouchers for PAMSC best players.

Games closing dinner was held on 25 October 2009 at Sarawak Club, Kuching. With much anticipation from PAMSC members, we ranked 5th in the overall standing.

	Position:	Team
Team Captain for PAMSC	1	Accountants (MIA)
Bowling Mr. Ricky Hong	2	Engineers (IEM)
	3	Lawyers (AAS)
Golf Ar. Peter Wong	4	Surveyors (ISM)
	5	Architects (PAM)
Badminton Ar. Stephen Liew	6	Chemists/Agricultural Scientists (MIC/SIAS)
	7	Doctors (MMA)
	8	Planner/Pharmacists (MIP/SPS)



LEMBAGA AKITEK MALAYSIA

Report on The Practice Committee Meeting held on the 27th August 2009 at the Board's Premises, Kuala Lumpur at 9:30 am.

The following points were discussed:

- 1.0 Proposed Amendment to Architects' (Scale of Minimum Fees) Rules**
The amendment was in the final stage with the Attorney General Chambers.
- 2.0 Proposal for LAM as Stakeholder for Architects' Fees**
The matter is now being brought up to the Minister and suggestion is that to start perhaps with housing projects first.
- 3.0 Clerk Of Works (C.O.W.)**
PAM is to work out a schedule to start training; however, CIDB has to acreditate the course, as they feel that the role of the C.O.W. should be under them.
- 4.0 Submission of Plans for Planning Approval from Architects**
Scheduled meetings with the Minister of Works had to be postponed and reschedule.
- 5.0 Scope of Works for Interior Designers**
Draft done and the Working Group will deliberate further before approval for circulation.
- 6.0 LAM Strategic Plans**
Dato Esa will chair the steering committee together with four other sub-committees. These are LAM'S visions and missions of the body in Malaysia.
- 7.0 Appointment of Consultants by the Ministry of Education (MOE) Projects in Sarawak**
Complaints from two Sarawak Firms were reported to the meeting involving double appointment of architects for the same job.

On checking, the letters presented were letters of intention and not award. As such, it was deemed that the Ministry have not committed any wrong. However, it was also suggested that the firms concerned should also write to the second architect and at the same time to submit claims for work to MOE carried out and agreed by them notwithstanding it was only a letter of intent. Not that they will always pay but this may help to make MOE more aware of such action.
- 8.0 Meeting ended at 12:00 noon.**

PAMSC rep: Ar. Chew Chung Yee

We warmly extend our appreciation to Ar. Chew Chung Yee for his time and effort to represent PAMSC at LAM.



PAMSC Donate a Book Project



The MBKS Library is located on the mezzanine level of the MBKS Gallery, to the left of the main lobby. It is open to the public, and has a wide collection of books on various subjects, as well as magazines and newspapers. Currently it is well utilized by members of the public and also students as a convenient place to read, and a quiet and conducive environment to study.

After several discussions with PAMSC and other professional institutes, the Council has started an initiative to develop the library into a Resource Centre for the Building Industry. In order to achieve this objective, the Council has called for the support and assistance of all the related professional institutes. PAMSC fully support this initiative by the Council which would be highly beneficial to the building industry. On 20th October 2009, PAMSC arranged for a contribution of 14 architectural books with a total value of around RM 2,000 to the library, with the aim of helping to build up the collection. PAMSC has also pledged to make an annual contribution towards the library.

The idea of setting up an Architectural Library has always been one of PAMSC's big objectives. Instead of each firm building up its own library of reference books, we can pool our resources together to avoid duplication and to achieve an even bigger collection than otherwise possible individually. This initiative from MBKS fits in perfectly with our objective, with the added advantage of having a free and existing venue for the collection.

With this in mind, PAMSC would like to call upon all the architectural firms in Sarawak to make a small contribution towards the MBKS Resource Centre. There are currently around 70 firms in Sarawak. If each firm can contribute one book, we can instantly add a collection

of 70 books to the library. This would immediately provide a much needed boost to the architectural collection in the Resource Centre and make it a useful reference and research centre for all architects in Sarawak.

PAMSC is calling all firms to make a cash contribution of RM200.00 towards this "Donate a Book Project". To contribute, just write a cheque to "Pertubuhan Akitek Malaysia Sarawak Chapter" for RM200.00 and send it over to the PAMSC Centre. Your contribution will be recorded and a list of all contributors will be forwarded to the Council together with the books. Please also suggest a book title which we can add to the collection.

In addition to the cash contribution, should you wish to donate a book from your existing collection, it is also more than welcome. Just send over the book to the PAMSC Centre - please include a label on the front inside cover clearly marked:

With Compliments

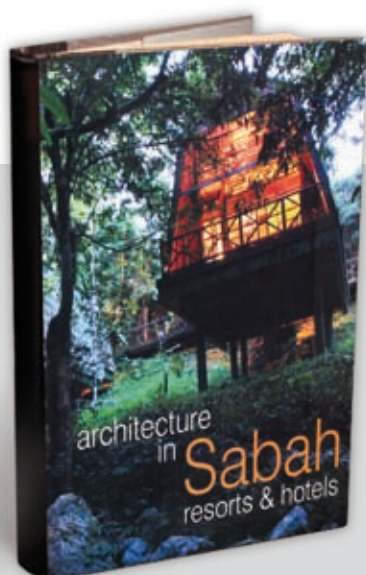
This Book is a Gift to the MBKS Resource Centre from "Name of Firm"

We look forward to your generous contributions towards this most worthy cause !

Pertubuhan Akitek Malaysia Sarawak Chapter



BENEFITING THE PEOPLE: Boon (third left) hands over the 14 architectural books to Chan (centre) witnessed by Kuching City South deputy mayor Councillor Alfandi Anuar (right, back row), PAM Sarawak Chapter members and councillors.



BOOK ON ARCHITECTURE IN SABAH: RESORTS AND HOTELS

PAM Sabah Chapter has presented the Sarawak Chapter with a copy of "ARCHITECTURE IN SABAH - Resorts and Hotels. The book highlights many of the key resort and hotel buildings in Sabah; with photos and descriptive text for the diverse selection of buildings. For a limited time only, PAM members may buy this book at a special discounted rate of RM100 (Recommended retail price is RM150). Contact PAMSC Secretariate to view and/or buy this book (082-457189).



The site before commencement of construction



Commencement of construction - Yee Sheng and Ka Yee preparing the HW nailers



Installation of the HW nailers - Michelle in white-T is the QA, QC officer



“Practical” Training In Sarawak



Sue-Ann mocking up the belian boards while the owner tests for springiness



Doing the floating edge detail - Qi Lin is our skilled labourer from Zhong Qing



Worked from 8 am to 8 pm - timber deck completed !



Subcontractors installed the aluminium and glazing later. The prop is not part of our design



Load-testing, as usual QA, QC is doing her job

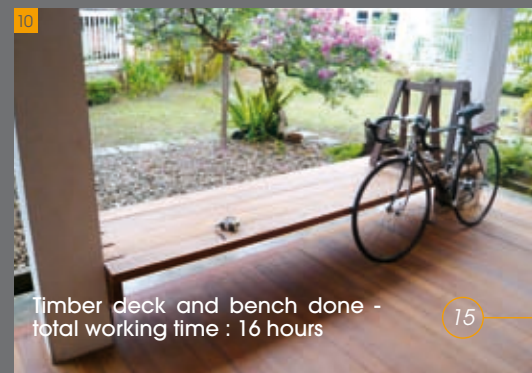


Day 2 - the construction of the timber bench



Our lecturers taught that architecture must have firmness, commodity and 'delight'. The floating edge is our delight!

Client: Eng Hooi, Belinda and Sarah
Project site: Taman Saramax
Construction Period: 2 days



Timber deck and bench done - total working time : 16 hours

A USER FRIENDLY GUIDE TO SITTING FOR (AND PASSING*) YOUR LAM PART 3 EXAMS

BEFORE EXAMS

A. THE READING LIST

- Check latest reading list via LAM examination website / printout to all candidates
- LAM circulars and PAM bulletins - they are usually 'Hot' topics for exam questions.
- Contact past exam candidates for compiled materials to save time;
- Make sure all notes, books, etc are up to date. (This is the easiest part, and should be done first. Getting all the information in front of you would also give you a clear indication of the task ahead.)

B. TUTORIAL CLASSES

- Attend tutorial classes. At least once, twice is even better (once before the exam year)
- There are privately run tutorials as well as LAM and PAM organised ones. Enquire with past candidates;
- Get the 'elders' in the architecture community to give tutorials at the PAM centre.
- Tutorials are good places to meet other exam candidates and a starting point to form private study groups:

C. STUDY GROUPS

- Form study groups with other candidates to share ideas and have critical feedback;
- Different people from different practices mean different point of views and a sea of experience;
- Group support is good;
- Email: pamswk@streamyx.com to register your interest in taking part of a study group.

D. STUDY TIME-TABLE

- Prepare a realistic study time-table and STRICTLY FOLLOW IT!!!
- Start planning at least 6 months ahead of Oral exams.
- Important to understand the scope of materials as well as the contents.
- Must practise past year questions. Train your speed by writing the answers out in 'exam' situation.
- Revise & attempt to answer at least last 10 years exam paper.

E. BE WELL

- Make sure you eat, drink and sleep well;
- Exercise to relieve stress;

DURING EXAMINATION

- Plan your time.
- Read all Questions and Understand.
- Try to answer ALL questions
- Answer in short sentences and make sure your handwriting is legible,
- Make sure you have a good pen and big 12 digit calculator.
- Stay calm and don't panic.
- Don't argue too much with your oral examiner, on second thoughts, DO NOT argue with your oral examiner

F. HOW TO APPLY FOR LEAVE

- If you have leave available, then the task is quite simple. But apply for leave ahead of time, to enable your employers to re-schedule your work load.
- Length of leave - one to two weeks is adequate if you have been studying regularly throughout the year. It is like training for a run; the more miles you can get into those legs, the better prepared you will be on race day.
- If you do not have enough leave available; you can opt for unpaid leave OR you can arrange with your employer to pay you back when you PASS your Part 3 exams. Of course, if you fail, then it IS still unpaid leave.

The fine print

* *The authors bear no responsibility for those who follow this guide and still fail the exams; if so, then sorry la.... This article's main purpose is to provide a friendly how-to guide to make the task of sitting for the Part 3 less daunting; much like a Jamie Oliver recipe for chocolate sponge.*

Co-authored by

Ar. Arlene Chew

Ar. Thang Suh Chee

STUDY GROUP

Several Part 2 Graduates are planning to set up a study group for those planning to sit for the Part 3 Exams. The local chapter has agreed to the usage of the PAM Centre for group study sessions, once there are enough participants (6-10 persons would be a good starting number)

For those who are interested; please register your interest with Ms Melinda (pamswk@streamyx.com).

AR JOHN LEE APPOINTED AS ACTING SECRETARY FOR MAJLIS BANDARAYA KUCHING SELATAN

PAMSC is pleased to announce that Ar John Lee has been appointed as the Acting Secretary for Majlis Bandaraya Kuching Selatan will effect from November 2009. Ar. Lee will continue to serve in his capacity as City Architect in the Council.

CONGRATULATIONS !!

The Playhouse is physically an expression of the minimal numbers and sizes of timber being placed together in order to mark out a habitable space.

Psychological man is lost when confronted by this void,
even the vastness void of nature.

It is an exercise to separate and to connect, to form and to un-form.

The material of nature (timber) is used to connect with nature.

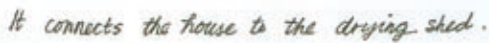
By detailing, the space which now stands between man and nature is familiarized. It has become material space. It is now habitable.

Location : Belize, Central America

Architect: Louis Tiong

Builder : Louis Tiong, Marto Kib (Maya Indian)

Client : Louise, Adam, Abraham



PRACTICE NOTES : 'NEWS FLASH FROM KEMENTERIAN KEWANGAN'

PERMITAN DUTI SETEM KE ATAS SURAT CARA PERJANJIAN PERKHIDMATAN

Merujuk kepada pemberitahuan bertarikh 9 Septambar 2009, YB Menteri Kewangan selaras dengan kuasanya di bawah seksyen 80(2), Akta Setem 1949 telah bersetuju supaya surat cara perjanjian perkhidmatan yang disempurnakan mulai 15 September 2009 hingga 31 Disember 2010 hanya dikenakan duti setem sehingga RM50 sahaja dan duti selebihnya diremitkan.

Sehubungan itu, bagi melaksanakan keputusan tersebut, sukacita dimaklumkan bahawa Perintah Duti Setem (Permitan) 2009 / P.U. (A) 391/2009 telah diwartakan pada 5 November 2009.

Selaras dengan pewartaan perintah permitan berkenaan, surat cara perjanjian perkhidmatan yang disempurnakan mulai 15 September 2009 hingga 31 Disember 2010 boleh disetorkan di mana-mana Cawangan Pejabat Duti Setem, Lembaga Hasil Dalam Negeri Malaysia pada kadar sehingga RM50 tanpa perlu memohon surat kelulusan daripada Kementerian Kewangan.

Bahagian Analisa Cukai
Kementerian Kewangan

10 November 2009

Kementerian Kewangan had announced on the implementation of Flat Rate of RM50 for the stamping charge on MOA for consultancy services from 15 September 2009 to 31 December 2010.

MAJLIS BANDARAYA KUCHING SELATAN OPEN COUNTER SESSION

Majlis Bandaraya Kuching Selatan (MBKS) has organised an open counter session on monthly basis since June 2009 to attend to any members of the public and consultants that may have problems or queries with their applications for building plan approvals. PAMSC has commented MBKS on this effort and hope that MBKS will maintain these regular sessions to expediting the submission process.

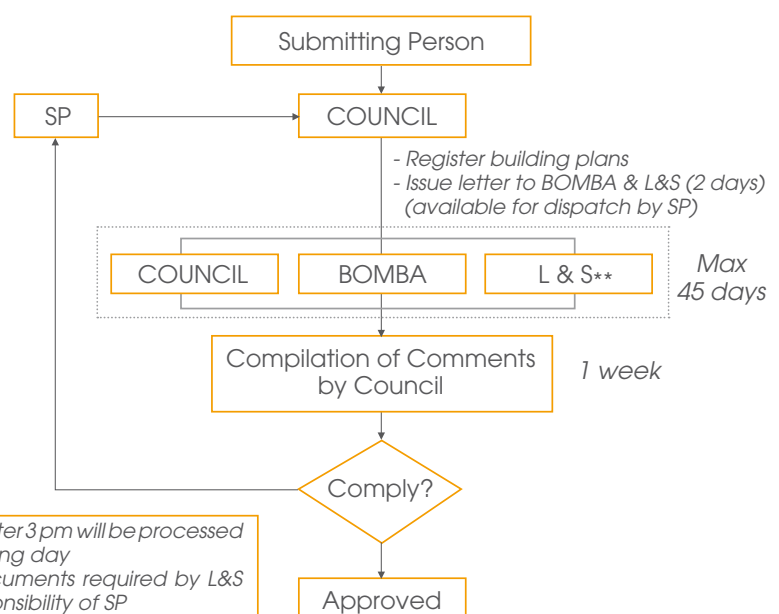
PAMSC also urges members to attend to the open counter session as to show our support and appreciation to this effort to assist on our building plan submission. PAMSC will fax the flyer on the schedule of the open counter session to all members once we receive from MBKS.

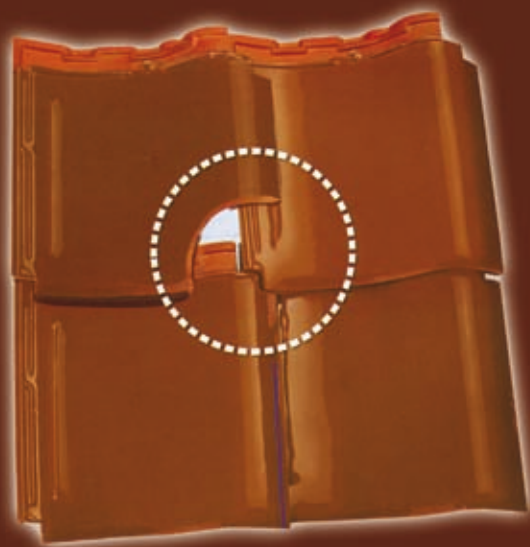


'ONE STOP CENTRE' FOR APPLICATION OF BUILDING PLAN APPROVAL

MBKS (Majlis Bandaraya Kuching Selatan) has settled up 'One Stop Centre' for registering and monitoring the status of application of Building Plan approvals on the relevant departments within the council and related authorities as follows:

- A. Council - Building section
 - Health section
 - Engineering section
 - Licencing section
- B. Bomba
- C. Land & Survey Department





The Excellence of M-Class

Ceramic
Roof Tile
with
Interlocking
System
Established Since 1997

M - Class®

Sistem Interlocking / Interlocking System

Mencegah bergeser dan bocor.
Prevents movement and leakage.



Tanggul Air / Water Resistant
Mencegah tampias dan rembesan air.
Prevent splash and water penetration.



Dilapisi Glazur / Glazed
Air tidak merembes, anti lumut dan warna terjaga.
Resistant to water penetration, moss and color fading.



Sistem Pengepakan / Packing System
Mengurangi risiko retak dan pecah pada saat pengiriman.
Minimizes risk of cracking and breakage during transit.

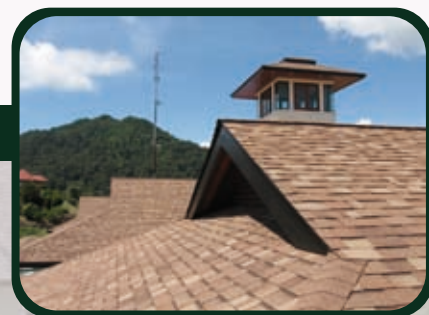


CAMBRIDGE 30

Laminated Shingle

IKO Cambridge shingles are laminated to provide a remarkable dimensional thickness, not only for strength, durability and weather resistance, but also to create an extraordinarily beautiful look for your home. Cambridge is manufactured in a larger size with more exposure to create a high definition "shake" look for your roof. Its double layer construction, using an extra-heavy fiberglass mat and tough modified sealant, provides superior durability and wind resistance. All Cambridge shingles are surprisingly affordable and are the perfect choice to protect and beautify your home. Cambridge 30 Western shingles feature an angle cut design.

- Fiberglass asphalt shingles
- Laminated architectural design
- F.M. tested class "A" Fire Resistance Rating**
- Limited wind warranty coverage up to 60 mph (97 km/h)
- Limited 30-Year Warranty*
- 3 year IKO "Iron Clas" protection*



*See Limited Warranty for details.

**All IKO fiberglass shingles require an approved underlayment when applied on roofs with a slope less than 8/12. Class "A" Fire Resistance Rating is achieved only with the installation of an approved underlayment.

Note: Cambridge shingles available from Calgary and Sumas plants are designed with an angle cut.

Onduline

ROOFING MADE EASY

Good Heat / Thermal Insulation

One of the best thermal insulation.
Good Heat Insulation $\lambda = 0.098 \text{ w/m}$.

Strong Sound Absorbency

Extremely effective against rainfall noises thus creating a unique living and working comfort in residential / commercial premises and improving productivity in farm buildings.

Waterproof

Waterproof is guaranteed 10 years in proper fixing instruction and normal usage conditions.

Light Weight

Only 6.4kg per sheet less purlin support needed.
(Length: 2000mm, Width: 950mm, Thickness: 3mm)

Strong

Withstands winds up to 120mph (192km/h) proving its suitability in hurricane and earthquake conditions.

Durable

Not subject to rust, corrosion and brittleness.

Asbestos Free

Onduline does not contain asbestos. Asbestos has been classified as a cancerous material in 1977 by the International Agency for the Research on Cancer. Many countries in the world have already adopted new regulations accordingly.

Cost Effective

Needs very little maintenance once the roof is installed according to our fixing instruction.

優越建材有限公司
ADVANCE BUILDING PRODUCTS SDN BHD

Vincent Ling

H/P: 013-365 5962

Kuching

SL 4, Lot 496, Jalan Muara Tuang
93250 Kuching, Sarawak
Malaysia.

H/P: 013-365 5962

Sibu No. 58, G/Flr, Jln. Sg. Antu 3,
Sg. Antu Industrial Estate 96000 Sibu,
Sarawak Malaysia.

Fax: 084-328 044

KL No. 4, Jalan Ara SD7/4B, Bandar
Sri Damansara 52200 KL, Malaysia.

Tel: 603-6277 6488

Fax: 603-6277 6489

Email: jerus_deco@yahoo.com



Certification No. 032-065

OUR PAINTS COME IN THOUSANDS OF COLOURS. BUT THE ONE WE'RE MOST INTERESTED IN IS GREEN.

Nature is the mother of all colours. We, at Nippon Paint, dedicate our best efforts to protect and preserve mother nature for the benefit of our future generations. We reduce energy consumption and minimise water disposal. We also developed ultra low VOC and energy saving products. As one of the leading paint manufacturers, we remain firmly committed to a better, brighter and cleaner future for the planet.

Contact us and let us show you more reasons why we are the paint experts.



The Paint Expert
www.nipponpaint.com.my



INDUSTRIAL | MARINE | AUTOMOTIVE | RESIDENTIAL | COMMERCIAL | PUBLIC DEVELOPMENTS