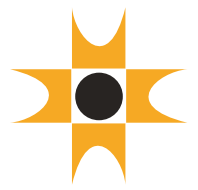


Intersection

March 2011



PAM
Pertubuhan Aitek
Malaysia
Sarawak Chapter

For Members Only

PAMSC Quarterly Newsletter No. 02/2011

www.pamsc.org.my



DESIGN FORUM 2011

...more on page 8

FEATURE ARTICLE CONTENTS



INTERVIEW WITH
AR. ANDREW TAN

P10



ALVAR AALTO'S VILLA
MAIREA: A METHODICAL
DEVELOPMENT OF
AN INCLUSIVE
ARCHITECTURE

P14



PAM TRIP TO LAOS

P16



CHINESE NEW YEAR
OPEN HOUSE AT
PAMSC

P17



SPOT SURVEY

P20



SINIAWAN REVISITED

P22

CONTENTS

BTS GALA DINNER
PROGRAMME

P5

HOW TO BE A HIPPIE

P6

DOUBLE-EDGED SWORD

P15

KEN YEANG SEMINAR

P18

REMINISCING KUCHING

P21

EDUCATION FAIR

P21



March will be the busy month for PAMSC; as we are organizing the Building Trade Show (BTS) 2011 which takes place on the 24th – 27th of March 2011. This is the 6th Edition of the BTS which is held once every two years.

We have a series of events and activities planned in conjunction with BTS 2011 and the major ones are:

BTS 2011 Trade Exhibition (Thursday 24th to Sunday 27th March 2011) held at the Borneo Convention Centre Kuching (BCCK) with ample space for companies to showcase their product and services. PAMSC is pleased to announce that the two major sponsors for BTS 2011 are ICI Paints and WEIDA; we record our appreciation for their support and participation.

BTS Networking Golf games are organized on Wednesday 23rd March, 2011 at KGS Golf Course and all PAMSC Golf members are invited to join BTS exhibitors and invited guests in a round of golf.

BTS Gala Dinner with the theme “Hippies Nite” will be held on Thursday, 24th March 2011 at Majestic Riverside Hotel. The evening will feature comic Diva Extraordinaire Joanne Kam Po Po and her troupe; the MC is radio celebrity “Non” who will give out prizes for best dressed guests and for lucky draws. The response has been very good as usual and PAMSC members are requested to book early to avoid disappointment. (Register with the PAMSC Secretariat)

Design Forum – “Sustainable Architecture – Building the Future” to be held on Saturday 26th March 2011 at the BCCK. This is a full day CPD event with 5 experienced speakers; they are Dr Ar. Tan Loke Mun from ArchiCentre, Malaysia; Dr. Davise Boutharm from NUS; Dr. Graham Crist from ‘Antarctica’, Melbourne; Dr. Darko Radovic from Keio University, Tokyo and our PAMSC member, Ar Wee Hii Min from DNA., Kuching. In conjunction with the design forum, there will be an architecture exhibition commemorating selected works from the 1920s to the present.

Lastly, I would like to thank all PAMSC committee members who participated in organizing the BTS 2011 Events and look forward to a successful BTS 2011!

Best Regards

Ar Desmond Kuek
Chairman
PAMSC



We are excited to present to you the March 2011 issue of INTERSECTION.

Since the last issue, we have received numerous comments and feedback.

It is encouraging to know that our readers are taking a keen interest in the articles published and we look forward to your continuous support so that we can be more informed and expand the content in INTERSECTION.

I would very much like to whole heartedly thank all authors featured in INTERSECTION and my editorial team for taking time-out to contribute to the newsletter which we hope will make INTERSECTION a relevant publication in promoting Sarawakian architecture and PAMSC activities.

Together, we can make PAMSC a much more vibrant community of architects!

Thank you!

Ar. Ivy Jong
Ar. Ivy Jong
Editor

EDITORIAL

March 2011 Editorial Team:

Ar. Ivy Jong	Editor
Ar. Wee Hii Min	Co-editor
Ar. Arlene Chew	
Ar. Leong Gian Wen	

Contributors:

Ar. Andrew Tan Boo Seng
Noraini Narodden
Intan Syazwani Bt Hj Sazali
Peggy Wong
Ar. Ng Chee Wee
Ar. Stephen Liew
Ar. Chew Chung Yee

Please contact the secretariat at 082-457189 (Melinda) or mail:pamscintersection@gmail.com should you wish to contribute.

'A Note to PAM Sarawak' from Ar. Andrew Tan Boon Seng

My heartiest congratulations to all the award winners from our PAM Sarawak Chapter (PAMSC) at the recent PAM award dinner. I hope this standard of excellence in architectural design will continue and will spur on all our members to achieve even greater heights and recognition in international circles.

Congratulations also to Ivy Jong and her editorial team in producing the excellent quarterly newsletter 'Intersection'.

PAM Sarawak Chapter has certainly come a long way since the inaugural date of November 6th, 1976 when we have fewer than 20 members then, to on present 130 members.

I hope PAMSC will grow even stronger in the coming years as a mouthpiece for architects in Sarawak.

ADDENDUM:

INTERSECTION WOULD LIKE TO CORRECT THE FOLLOWING FROM THE DECEMBER 2010 ISSUE:

DR. PAUL YONG MIN HIAN
Building Consult Integrated Sdn. Bhd.

The printed heading, BUILDING CONSULTANTS INTERGRATED SDN. BHD. should be BUILDING CONSULT INTEGRATED SDN. BHD.

Mr Bradford mentioned as the architect in charge of Kuching branch for Booty Edwards and partners is to be corrected to **Mr. David James Blatchford**.

Intersection has obtained feedback from a member reading the last issue that Mr. David James Blatchford had sadly passed away last year. His wife Thelma has visited Kuching last year from Cyprus, where they had been residing since leaving Brunei. She had come to see his works in Kuching and in particularly the St. Joseph's Cathedral.

INTERSECTION would like to convey our condolences to the late Mr. David James Blatchford's family.



Claytan®

Since 1920

Accompany You For Life



**The BrandLaureate
 SMEs Chapter Awards 2008
 Best Brand in Product Branding
 Ceramic Tableware & Sanitaryware**



CLAYTAN CORPORATION SDN. BHD. (25398-P)
CERAMICS CENTRE SDN. BHD. (78141-K)

Lot 1035, Jalan Kemajuan, Pending Industrial Estate, 93450 Kuching, Sarawak.

Tel: 082-343262 Fax: 082-343263

BUILDING TRADE SHOW 2011



The biggest show of its kind in Borneo, BTS 2011 will be even more compelling with its informative, innovative and inspiring displays and exhibits in the purpose-built venue, the Borneo Convention Centre Kuching. Established since 2003, BTS brings together planners, builders, manufacturers and suppliers to showcase the latest architectural innovations, engineering feats, attractive housing and industrial designs, potential new sources of materials and networking among professionals in the various fields. BTS is the launching pad for penetration into the vast potential of Borneo states of Sarawak, Sabah and Brunei where mega projects like Sarawak Corridor of Renewable Energy (SCORE), Sabah Development Corridor (SDC) abound with development of aluminium and timber industries, oil and gas, fishery, tourism and infrastructures of roads, rails and ports. The transformation of Borneo states will see a steady influx of foreign capital investments which

BTS participants can tap into in collaboration with local expertise and agencies aligned to these projects. BTS 2011 is the gateway to new business opportunities in Borneo, an event where the best, latest and innovative products and services will be on show; book your booth now and prepare for an overwhelming show in Kuching, Sarawak.

Borneo Convention Centre Kuching - The first purpose built convention centre located on the mystical island of Borneo opened for business in August 2009. Built on the idyllic riverfront of the Kuching Isthmus, this latest development for Kuching City will also feature a shopping centre, marina, offices and on site hotel in the near future to compliment the convention business.

BCCK is just 5 km from Kuching city centre and close to Kuching International Airport. Major tourist attractions are also located nearby. BCCK has a unique multi-purpose design that is able to accommodate traditional conventions, conferences, exhibitions and multi level. This highly versatile facility will be accompanied by five star services and the warm hospitality that awaits you in Borneo.

To date there is a total of 97 exhibitors from local and regional companies participating in the exhibition.

Supported by :



Sponsored by :



LAUNCHING OF TELE-CONFERENCING FACILITIES AT PAMSC SOON

PAMSC is in the process of setting ICT facilities to enable members to benefit from tele-conferencing with PAMKL in the near future.

This will enable members to participate and interact in 'virtual' lectures and seminars held in KL at PAMSC, Kuching !

BTS GALA DINNER PROGRAMME

In conjunction with the BTS 2011; a themed Gala Dinner is organised on the 24th of March 2011 as a culmination of events leading up to the weekend.

This is an excellent opportunity to meet fellow architects, suppliers and friends.

- When? 24th March 2011 (cocktail reception at 6pm)
 Where? at the Crown Majestic Hotel
 Wassup? theme - HIPPIE NITE
 Who? hosted by DJ Non
 Who?? entertainment by Diva extraordinaire
 Joanne Kam Po Po and local supporting act,
 The Simple Rhythm Band.
 lucky draws
 prizes for best dressed guests
 How? Book Now! RM 180 per ticket or
 RM 1800 per table

contact PAMSC to book your table early to avoid disappointment:
PAMSC secretariat: 082-457189



Joanne Kam Po Po Diva extraordinaire

The emancipation of Joanne Kam into the entertainment industry in the 90s introduced a whole new meaning of comedy and turned around the conservative night scene of Kuala Lumpur. The explosion of her talent on stage also catapulted the success of Kuala Lumpur's first cabaret club, the *Boom Boom Room*. *Boom Boom Room* quickly became the Studio 54 of Kuala Lumpur where Joanne Kam reigned as its risqué mistress, dishing out her scandalous jokes to her ocean of eager fans that commuted weekly to pay tribute to the "Diva Queen of Comedy". Kuala Lumpur was never the same again.

Her versatile talent has made her one of the most sought after artist in the industry, with her knack of entertaining all levels of audiences at countless events, dinners and functions. Her quick wit coupled with her ability to adapt allows her to charm her crowd with professional ease and have them lapping up her inimitable brand of humor that her audience can't seem to get enough!

Joanne Kam is currently still the only female stand-up comedian in Malaysia and her reign remains unchallenged, sealing her DIVA status.



MC for the evening
 will be Aanont Wathanasin
 aka 'Non'

Non, or Aanont Wathanasin has been part of the Malaysian radio scene since joining Mix FM in 1999. 7 years hosting a variety of shows for Mix Fm has seen him interviewing some very interesting people including Duran Duran, Jason Mraz, Sheila Majid and many others.

When not on the air, he often lends his experience in hosting to corporate clients for various functions including annual dinners, award ceremonies and team-building seminars.

His favourite claim to fame is that he has Jason Mraz's handphone number. Ask him nicely and he might just let you peek at the first few digits.

PROGRAMME FOR GALA DINNER*

Time	Event
6:30	Cocktail reception
7:30	Welcome by DJ Non BTS Opening ceremony 8-course Dinner commences Performance by local entertainer
8:00	BTS Golf - presentation of prizes Lucky Draw (3 prizes) PAM donation to two local charities
8:30	Local entertainment Prizes for Best Dressed Male and Female (4 prizes)
9:00	Lucky draw (2 prizes) Performance by Joanne Kam Lucky draw (2 prizes)
10:00	Finale

*subject to change in sequence



HOW TO BE A HIPPIE

Come this 24th March 2011, we are going to be stepping back into those days of the psychedelic tripping 60's!!! Researching online and interviewing some retired hippies, we have put together a list of Hippie-how-to's for you hippie wannabes.

A Quick Guide to Achieving The Hippie Look

- * Do have a flower. I know the song says "in your hair" but the truth is that it's hard to get the things to stay put.
- * No flower? Go for the Pocahontas headband. Pleated leather headbands or fabric headbands, your choice, your freedom.
- * Hair is long and "unkempt looking", almost like you crawled out of bed without giving a care to how you are looking.
- * Women could wear a mini or even micro skirt provided she had decent legs. A chain belt was groovy. Boots or go-go boots were okay too.
- * Jeans, the grungier the better. Leather vests were big too.
- * Fringe on anything, from vest, jackets, pants, shirts to even bags. Anything could be fringed.
- * Peace symbol. Every last one of us had at least one peace symbol. If you didn't want to wear it around your neck you could have a peace symbol belt buckle or pin.
- * Beads around your neck. Lots of colorful plastic mardi-gras beads to wooden beads.
- * Tie dye shirts, t-shirts, pants, ponchos, etc. Twist or gather the fabric, secure it with a rubber band and pitch it in a pot, bleach it or dye it. You don't get great multicolored perfect patterns, but what you do have is authentically handmade.
- * Facial hair - on men only! Beards or moustashes, but never nicely trimmed.
- * Finally, just as Ken Kesey once said "The 60s aren't over yet, not until the fat lady gets high!" Get ready to get the party on!

MAKE LOVE, NOT WAR!

60'S THEME PARTY BTS 2011 GALA DINNER

@ RIVERSIDE MAJESTIC HOTEL ON 24 MARCH 2011

6.30PM ONWARDS

Get into the Groove!

PAMSC CORDIALLY INVITES ALL MEMBERS TO JOIN THE FUN!! TICKETS CAN BE OBTAINED FROM PAMSC.

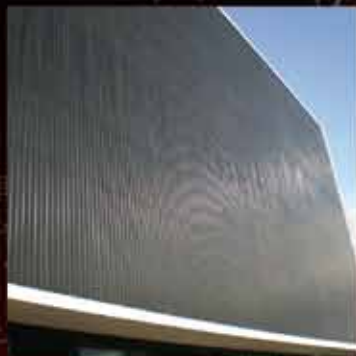


DML Products (Borneo) Sdn. Bhd.

Manufacturer of Metal Ceiling and Louvers



● Strip Ceiling ●



● Strip Fascade ●



● Sun Louvres ●



● Ventilation Louvres ●



● Box Louvres ●



● Aerofoil ●



● Aeropoint ●



● Tile Ceiling ●

DML PRODUCTS (BORNEO) SDN BHD (742099-D)
(Manufacturer of Metal Ceiling and Louvers)

Lot 872, Demak Laut Industrial Park, Phase 3, Jalan Bako, 93050 Kuching, Sarawak Email: service@dml.com.my Website: www.dml.com.my
Tel: 082-432062 Mobile: +6016-889 0172 (Angeline Lim) / +6016-889 0173 (Alex Ting) Fax: 082-432049



PAMSC DESIGN FORUM 2011

Theme : Sustainable Architecture – Building the Future
Date : 26th March 2011 (Saturday)
Venue : Borneo Convention Centre (BCCK)
CPD Points : 4 CPD Points

Entrance Fee

PAM Corporate	RM200	Non-Member	RM250
PAM Graduate	RM150	Student	RM100

(limited space)

contact PAMSC to book your seat early to avoid disappointment:

PAMSC secretariat: 082-457189

The PAMSC Design Forum is back !

This year the Forum will feature a total of 5 speakers from Malaysia, Singapore, Australia, including one visiting Professor from Keio University, Tokyo. The main Theme for the Forum is "Sustainable Architecture – Building the Future". Most Architects would agree that "Sustainable Design" is one of the key concepts of building for the future. The problem is where to start. The design principles and technologies may seem complex and unfathomable, and getting a handle on these would take time and constant updating of knowledge and new information.

This series of Design Forums on Sustainable Architecture was started as a way to showcase designs by practicing architects as well as architectural academics in various fields, with different approaches to sustainable design. The premise is that "Sustainable Architecture" is not just limited to those body of work labeled as such. "Sustainable Architecture" also encompasses architecture of high quality which can withstand the passage of time. The Parthenon may not have been conceived as "Green Architecture" but it has withstood thousands of years of history, and even today it stands and is admired. By that measure, it may be one of the most "sustainable buildings" in the world.

Looking at sustainability from this angle, then achieving "sustainability" is not just a technological quest which maybe engineers are more suited to pursue, but also a design pursuit which all architects should be aiming for. It also puts the focus back on the architect – the architect becomes the main facilitator which brings all the various elements together to achieve the sustainable objective.

The Speakers

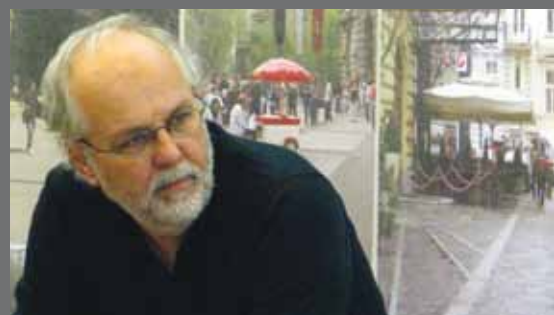
Professor Dr Darko Radovic

Professor of Architecture and Urban Design, Keio University, Tokyo

Dr Radovic received his doctorate in Architecture and Urbanism from the University of Belgrade, Yugoslavia. He has taught, researched and practised architecture and urbanism in Europe, Australia and Asia.

Dr Radovic's research in architecture focuses at the nexus between environmental and cultural sustainability and situations where architecture and urban design overlap, where traditional "architectural" and "urban" scales blur, where social starts to acquire physical form.

His investigations of the concepts of urbanity and sustainable development focus on culturally and environmentally diverse contexts which expose difference and offer encounter with the other. He argues that neither the path of ecological nor that of cultural sustainability can be undertaken separately, and indeed that there is no viable future without their harmonious synthesis. On that basis, he has developed the concept of eco-urbanity, which constitutes one of the hubs of his recent research, teaching activities and publications.



Dr Graham Crist

Senior Lecturer – RMIT Architecture
 Practice Director of Antarctica, Melbourne

Dr Graham Crist is a founding director of Antarctica and brings many years professional experience to the group. He has worked in offices in Melbourne, Perth and Paris prior to Antarctica, including his own practice, the partnership of Harrison and Crist.

His post-graduate education in Perth studied that city intensely, and his recently completed PhD by project at RMIT examined the practice of Antarctica's work based in Melbourne. He now studies the built environment closely through building and through parallel academic activity at RMIT University. He participates broadly in the profession-teaching, writing and sitting on Institute of Architects Environment and Education committees.

Graham's work has been published in Architecture Australia, Monument and AR-both as a writer and a designer, and he has participated in exhibitions of his work on many occasions. Through these activities he aims understand architecture's contribution in the fullest sense both in relation to its physical environments and to the social processes around it.





Professor Dr Davisi Boontharm
Assistant Professor, Department of Architecture, National University of Singapore

Dr Davisi Boontharm is currently the Assistant Professor at the Department of Architecture, National University of Singapore. Prior to her current appointment she was Assistant Professor at the Faculty of Architecture, Kasetsart University, Bangkok. Her research focus is on Culturally Sustainable Built Environments; Commerce, Consumption and Creativity in Asian Cities (Tokyo, Singapore, Bangkok); Creative Reuse and Recycle of Vernacular Urban Form; Shophouse Typology; and Tropical Urban Architecture. At NUS she teaches Theory of Urban Design and also supervise postgraduate research work.

Among the many awards and honours received by Dr Davisi are the Japan Foundation Japanese Study Fellowship, and the JSPS Post Doctoral Fellowship (2006-2007).

Dr Davisi has also collaborated on a number of books on Sustainable Design and Urban Design., most notably "CityHome: Adaptive Reuse of Urban Shophouses (2006)"; "Cross Cultural Urban Design: Global or Local Practice (2007)"; and "Mobile Vendors: Persistence of Local Culture in the Changing Global Economy of Bangkok (2008)".



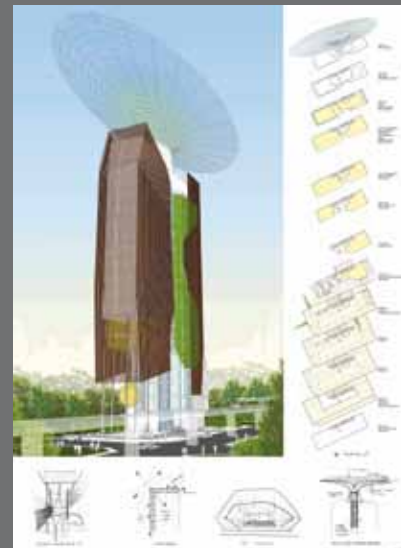
Ar Dr Tan Loke Man
ArchiCentre, Kuala Lumpur, Malaysia

Arch. Dr. Tan Loke Mun, is a Director of ArchiCentre Sdn. Bhd. The architectural design company operates out of Kuala Lumpur, Malaysia where they are involved in a variety of projects around Malaysia and overseas. He is a Past President of the Malaysian Institute of Architects (PAM) and a member of the Board of Architects Malaysia.

Ar Dr Tan obtained his architectural training from Deakin University and later his doctorate from Melbourne University, Australia. Dr Tan's field of expertise is in social and self-help housing and he has worked in many parts of urban and rural Australia, Uruguay and Brasil. He is also a registered Builder in Victoria, Australia.

ArchiCentre's architecture embraces and interprets regionalism in a modern context.

In a rapidly changing world landscape, ArchiCentre believes that well designed buildings actually create value for all its users. As such, it endeavours to find the balance between the rush towards modern standardization and the extra effort and details that can create the requisite ambience for its projects. Often working from the basis of typologies, ArchiCentre has managed to interpret and translate simple regional metaphors into its interesting architecture.



Ar Wee Hii Min
Design Network Architects (DNA), Kuching, Sarawak, Malaysia

Wee Hii Min graduated from Deakin University in 1989. Before returning to Sarawak, he worked in Australia for several years – for the Ministry of Housing in Melbourne, later for several small practices in Geelong – learning lessons about buildability and resource management in architecture.

In 2000, he and three others formed DNA (Design Network Architects) – a collaborative group interested in the development of architectural solutions for the tropics which reflect local culture and lifestyle. They believe that the size of projects is not as important as the design and learning possibilities within. They seek to incorporate existing site elements into their design to continue the site's personal history.



DNA advocates the continuous process of training and improving themselves in their craft with priority given to the training of young architects and students in their office. When not practising architecture, Min spends his time practicing brick-laying at Habitat for Humanity job-sites.



INTERVIEW WITH **AR. ANDREW TAN**

Ar. Andrew Tan Boo Seng is one of Sarawak's first few architects. A graduate from the renowned Architectural Association School of Architecture London (AA) with a Certificate in Tropical Studies; in 1965, he returned to serve his homeland. Geared with early training and working experience gained at Sarawak Public Works Department (PWD), he started Konsortium Malaysia (KM) in July 1971. Ar. Andrew Tan was instrumental in the design in many of Kuching's landmarks such as the original Dewan Undangan Negeri Kenyalang Park Shopping Centre and Housing Scheme.

INTERSECTION caught up with him in Australia during which he recounts his past and shares with us his thoughts and advice on architecture....

When did you first become interested in architecture? How were the early years of studying architecture?

From an early age I was very fond of pencil sketching; copying from comic books and strips. My interest in architecture started when I came across a magazine featuring floor plans and perspectives of American houses. I was captivated instantly; curious to discover how plans evolved into built houses. I remember thinking that architects must be very talented.

In 1956, I was one of a handful of students who passed the Cambridge Overseas Higher Certificate; giving me hope of winning a Colombo Plan scholarship for a full degree in Architecture. Instead I was offered a State Government's scholarship for a 4 year course at the Technical College, Kuala Lumpur (now known as UTM). And so began the long road of my journey in architecture...

I underwent apprenticeship training in Public Works Department (PWD) before starting the course. This training proved very beneficial and enjoyable as I entered the PWD Divisional office straight out of school and learnt basics in draughtsmanship and site-work.

In 1957, we were the second group of Sarawak Government sponsored students to enter the Technical College and I was the only one reading architecture! Others were pursuing various engineering courses. The architectural course had just been restructured with Professor Julius Posener from the Brixton School of Building, London as the new Head of Department, tasked to ensure the diploma course met the standards of intermediate level of the RIBA. Norman Lehey, an Australian architect was appointed to assist in setting up and running the course (Norman would later become a good friend of mine). In 1962, I graduated and started work with the Building Branch, PWD Headquarters.

When did the opportunity arise for you to go to the AA?

On my leaving Kuala Lumpur, Professor Posener personally recommended to the Director of PWD that I would benefit from further training to qualify as an architect with qualification attained at intermediate RIBA. At the advice of Mr. J.K. Wardzala (director of PWD then), I successfully applied for the Commonwealth Scholarship for post graduate studies in the UK.



At current office: Arkitek KM Sdn Bhd



Technical College '57 - '61



With the late Norman Lehey (in tie)



At the AA '63 - '65
Trafalgar Square,
London



At the PAMSC inauguration dinner, 6 November 1976

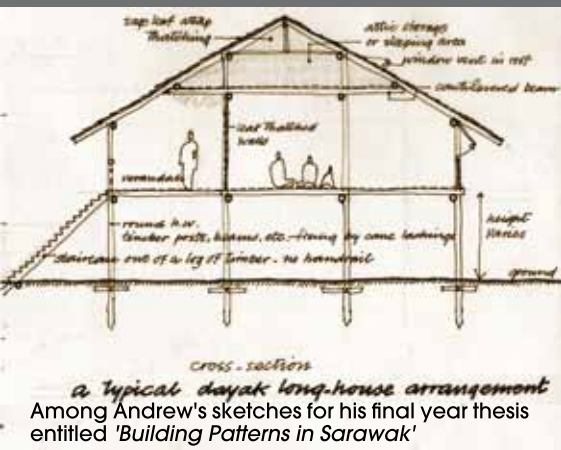
My colleague, the late Harry Alderton advised me to apply to study at the A.A. where he studied. I did so; applying for a place in 4th and 5th years leading to their graduate diploma. I was accepted into the course after passing a design test.

In mid 1963, I left for London amid great apprehension and excitement and after 2 years at the AA, managed to graduate with honours; earning a certificate in Tropical Studies and Part 2 RIBA. After which, I returned to work at PWD Headquarters to fulfill my scholarship contract.

When did you decide to venture into your own practice?

My former lecturer, the late Norman Lehey had left teaching and started a private practice in Kuala Lumpur. He was commissioned to undertake the design of the master plan and housing for Kenyalang Park (for BDC), the largest housing scheme in Kuching at the time. Norman encouraged me to join his practice. After serious thought, I decided to venture into private sector with all its uncertainties. So in 1967, I left the government service to join Norman Lehey & Associates.

We were the pioneer architectural practice then and saw a need for other specialist consultants to be involved in large building projects. There were no practicing consultant engineers or surveyors, so in 1971, a group of us decided to form Konsortium Malaysia (KM), a multi disciplinary practice of offering integrated services in architecture, town planning, civil and structural engineering and engineering survey. We practiced as such until 1998 when KM was restructured into Konsortium Malaysia, an engineering consultancy firm and Arkitek KM Sdn. Bhd., solely practicing architecture. I have been associated with the new architectural group since.



Among Andrew's sketches for his final year thesis entitled 'Building Patterns in Sarawak'

Artist's impression for the Banquet Hall Astana



Old Miri Airport Control Tower



The completed Banquet Hall Astana



Completed Konsortium Malaysia Office Building located at Kenyalang Commercial Centre

"Architecture is a continuous growth process which keeps evolving; with new emergent global societies, new technologies and materials. Until today, I am still very much interested and inspired by all the new works taking shape around the world."

Images of Kenyalang Park Commercial Centre - Nearing completion



Are there works of any architects which inspire you?

In my student days and during practice, the works of Mies van der Rohe, Oscar Niemeyer, Lucio Costa, Frank Gehry and Paul Rudolph inspired me. More recently - perhaps Moshe Safdie.

How do you integrate your design philosophy/vision while fulfilling the client's perception of the project?

I don't think I have a design philosophy as such. I take every project as an individual challenge to provide the best solution. I believe in clear communication between all parties from client down to all team members; to fulfill the project brief within time and budget. The successful completion of a project is about team work and giving credit where it is due.

You have been practicing for many years; tell us about the projects that you particularly enjoyed working on?

I practiced for 40 years with projects mostly in Sarawak and a few in Sabah; the early years were very exciting. I worked mostly single handedly from conceptual design to the handing over of the finished building - even doing working drawings manually! Nowadays, the computer shortens the production time a great deal.

I enjoyed my involvement in the large housing projects notably; Kenyalang Park, (including Kenyalang Park Shopping Centre) and Tabuan Jaya in Kuching; Rejang Park and Sungai Antu Industrial Estate in Sibu. We did prefabricated timber housing for the Settlers Land Development Schemes under Sarawak Development Finance Corporation (forerunner of SEDC) in the main divisions in Sarawak.

I particularly enjoyed working on the Kenyalang Park Shopping Centre, especially the planning and detailing of the pedestrian precincts of the shopping centre. I am especially pleased to see that these public precincts and shops are still so vibrant and successful today.

We did the renovation and restoration works to the Astana; including the construction of a new Banquet Hall and second tower in 1988. The project was meticulously carried out to preserve original design and condition.

The documentation (including interior design) of the Dewan Undangan Negeri (DUN) Complex was a satisfying experience, especially the artificial lake and fountains in the axial forecourt leading to the Council Negeri especially with the maturing of the trees and shrubs. Sadly, this DUN Complex is in disrepair and no longer in use.

Other major projects included the Kota Samarahan New Town Master Plan, the Miri Airport Terminal and Miri Courthouse, Basic Science Institute Complex (in UPM Bintulu), Telekom Headquarters and Training College (at Jalan Simpong Tiga).

How do you perceive architecture in general and especially in our tropical climate?

Simply put, I perceive architecture in different phases. As a student, we were attracted to works of famous architects around the world and viewed these as great works to emulate, especially in their forms and composition.

After graduation and entering actual practice, you try your best to put all these theories and design ideas into practice. Only to realize that you are designing and building for society and have to fulfill other aspects such as site context, climate, clients' brief, budget and aspirations. **I believe that successful architecture one that satisfies the clients' brief after careful thought and analysis of these considerations.**



Images of Kenyalang Park Commercial Centre nearing completion

It is important that we design buildings to suit our tropical climate. It is of utmost importance to keep the weather out through correct orientation and the use of suitable materials. The use of sun breakers and fins help climatically while creating interesting forms and facades. It saddens me to see that there are still buildings being built in Kuching that uses full curtain walls without sun shading in their facades; practically glass boxes!

Landscaping is a very important aspect that is often neglected; every project should have proper landscape design to suit their particular needs with the appropriate planting to shade and beautify. Site topography and existing greenery should be retained as much as possible. PAMSC should hold workshops and seminars conducted by professional landscape architects.

Every architect practicing in the tropics should produce design solutions that are sensitive and responsive to climate.

“Architecture is a continuous growth process which keeps evolving; with new emergent global societies, new technologies and materials. Until today, I am still very much interested and inspired by all the new works taking shape around the world.

We thank you for the time; a final word of advice for our fellow architects?

Architects must to retain their role as the lead consultant in projects although this role has been eroded somewhat. We should practice with humility, full professional integrity and responsibility towards our clients, fellow professionals and colleagues. We should design in the right context; sensitivity for climate being of utmost importance.

In this world of rapid change and advancement, architects should keep abreast with the latest building methods and technology, and strive for environmentally friendly, energy efficient and sustainable buildings.

PAMSC EDITORIAL TEAM WOULD VERY MUCH LIKE TO EXTEND THEIR THANKS TO MS. INTAN SYAZWANI BT HJ.SAZALI AND MS. NORAINI NARODDEN OF KONSORTIUM MALAYSIA FOR THEIR GENEROUS TIME AND EFFORT IN THIS ARTICLE.



Dewan Undangan Negeri (DUN) Aerial view



Dewan Undangan Negeri (DUN)



Dewan Undangan Negeri (DUN)
Water feature and landscape

LECTURE BY JOHN GAMBLE: ALVAR AALTO'S VILLA MAIREA- A METHODOICAL DEVELOPMENT OF AN INCLUSIVE ARCHITECTURE

John Gamble is a lecturer at the University of New South Wales; currently undertaking a Doctorate on the works of Alvar Aalto. For a while, he had a private practice in Australia and he has also worked with Malaysia for a spell in the 1990s. He was in Kuching to speak to the local architectural fraternity about Aalto's work on the 11th of December 2010.

INTERSECTION met up with John and the following is an excerpt from their conversation...

Can you tell us in a few words why you chose to do your doctorate on Alvar Aalto?

How do you think current practitioners can learn from Aalto's work?

I'm doing the doctorate on Aalto solely for the reason that I think that his work offers important lessons for contemporary architectural practice. In particular this is to do with the inclusive character of his work. Aalto believed that 'humane' environments require design approaches that address, as fully as possible, the entire spectrum of human and environmental factors associated with each project. It is my belief that the differences between high levels and low levels of inclusiveness are not just quantitative - it is not just a matter of 'more'. They are also qualitatively different. In terms of both design intentions and material/formal strategies, a highly inclusive design approach necessitates the accommodation of 'contradictory' perspectives and ideas. One way to further an understanding of this is to study the work of an architect who is a master of the approach.

Aalto also believed that the two great obstacles to the creation of 'humane' architecture in the twentieth century were formalism and technological determinism. His concern is still relevant today - probably even more so.

It is obvious from your presentation that you are truly immersed in Aalto's work - does this affect the other aspects of your professional life - such as teaching and private practice?

Inclusive approaches to architecture have always interested me. So Aalto is just the current focus of that for me (although his work has influenced me more than any other architect). As a student in the 1970's I was very impressed by Christopher Alexander's essay 'A City Is Not A Tree' in which he argued that good environments are multi-structured, not single-structured, and by the Californian architect Joseph Esherick (who houses I admired and studied) and his statement that he tries to develop a dozen or so spatial patterns within each house. And the 1970's was a very good time to be a student because there were so many things being discussed in architecture - alternative forms of energy and building construction, user-participation, critiques of modernist notions of space and place, urbanism, regionalism, anthropology, environmental psychology and sociology, climate design, etc. And before researching Aalto in depth I spent quite a few years thinking about work by other 'inclusive' architects such as Frank Lloyd Wright and Charles Moore. After thirty or more years of studying such work I feel very familiar with this general approach to architecture. So, it inevitably comes out, at least in terms of intentions, in my (part-time) teaching and (part-time) design practice. The key thing is seeing things from multiple perspectives. I try to do that in my design work; and I try to help the students become familiar with that way of thinking by presenting architectural examples and critiquing their work with that in mind.

You have many former students in Malaysia and have worked with some of them, can you tell us a bit about your 'Malaysian' experience?

I started part-time teaching at the University of New South Wales in 1981, my second year out of university. There was then a very high percentage of Malaysian students in the early years of the architecture course and I became good friends with quite a few of them - I was only eight years or so older than them. They were generally very easy-going and good-humoured, but also very bright, extremely hard-working and enthusiastic. And they had a strong sense of comradeship. I admired all those qualities. Since then the number of Malaysian students has decreased significantly. I worked for Q. Jade Saw Architects in Kuala Lumpur in 1996-97. Jade and her sister Kim are very good friends and I enjoyed living in KL very much - Sydney seemed quite boring in comparison. My impression of KL was that there was a wealth of ideas to explore - the city structure, the multi-cultures, climate, lifestyles, history, topography, landscape, architectural heritage, building types, etc. I don't know what research is currently being done on such topics by the universities, research-oriented architectural practices and other bodies. Hopefully, they are receiving the attention they deserve.

Is there life after Aalto? What do you plan to do after this doctorate is completed?

Once the Aalto thesis is finished I hope to get it published. But after that - yes, there is life after Aalto. Since my undergraduate days I have moved between private practice, teaching and research. I love all three and try not to be away from any one of them for very long. So I will be looking for private architectural work. But I also have in mind a range of topics that I would like to research and publish. The Aalto research is primarily concerned with a general approach to architecture but these other topics, although connected to this approach, are more specifically concerned with Sydney. They include: public spaces - I think some of the beaches (the landscapes, not the urban design that has been built around them) are among the best public spaces in Sydney and for reasons that go to the core of what makes good public spaces; the geography and history of Sydney and how these might contribute to contemporary architectural design; early- to mid- nineteenth buildings in Sydney - perhaps surprisingly, some of these buildings manifest the ordering ideas that I'm researching in Aalto and they deserve to be considered in terms of the lessons they provide for contemporary design practice, and not solely as items of historical 'heritage'; 'popular' building/architecture (e.g. project/kits homes) and 'elite' architecture in Sydney - I believe that critical appraisals of both of these 'architectures' - they each have their strengths and weaknesses - can lead to the desirable outcome of a stronger connection between the two.



John meeting members of the audience

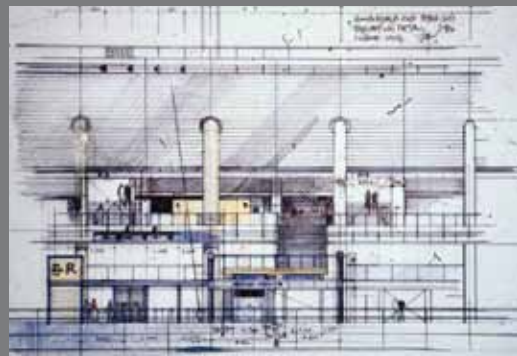


Interior view of Villa Mairea



John's talk had a good turn out despite the short notice

LECTURE BY RYU CHOON SOO -DOUBLE EDGED SWORD



Choon-Soo Ryu is one of Korea's leading architects. He has been involved in the design of a number of large-scale international projects, including sports stadia in Austria and Malaysia and the 868 Tower in Haikou, China. His practice, Beyond Space, is known for buildings that combine the latest technology with Korean traditions, while making the most of the natural characteristics of the site. Ryu is the designer of the award-winning 1988 Olympic Village and the 2002 World Cup stadium in Seoul.

He has also worked in Kuching and collaborated to build our Indoor Stadium in Petra Jaya. Last week, Mr. Ryu spoke to local architects at the PAMSC during which he shared his views and thoughts about local and international architecture.



成利玻璃有限公司
SENG LEE GLASS SDN. BHD.
(387670-T)

eurogroove

INFINI
SL38

SOLIDE
SL28 / SL886 / SL18

BIFOLD
SL86



Seng Lee Glass
Your Right Choice

Security Beauty UV Screening Acoustically Insulating



Agent of :

SAINT-GOBAIN
GLASS

World Leader in Glass Manufacturer



Casement Window



Top Hung Window



Sliding Window



Sliding Door



Bifold Door

Lot 9575, Jalan Pending, 93450 Kuching, Sarawak, Malaysia.
Email : info@sengleeglass.com

Tel : + 6 082 337733 Fax : + 6 082 332255
www.sengleeglass.com



PAM TRIP TO LAOS

PAM trip to Laos on the 18th to 22nd Dec 2010

From the 18th to the 23rd Dec 2010, three PAMSC representatives; Ar. Desmond Kuek, Ar. Mike Boon and Ar. Stephen Liew joined eight PAM members to visit Laos at the invitation of the President of ALACE. The PAM contingent was led by PAM President Ar. Boon Che Wee.

ALACE is the Association of Lao Architects and Civil Engineers

The objective of the trip was to foster closer collaboration on issues pertaining to the practice of Architecture within the ASEAN region, and exchange of ideas.

The following is a brief account of our trip which includes visits to the 3 major provinces and their respective ALACE branches. Our entire trip within Laos was conducted by road; giving us an in-depth view of this exotic country.

1st Stop Vientiane

The party arrived in Vientiane late in the afternoon, we were whisked away to our host's (Mr. Sengkham) riverside hotel - The Vansana where we were treated to a wonderful sunset with Thailand as a backdrop across the river.

Later that evening, a formal meeting was held between PAM and ALACE executive committee members at The Vansana. The ALACE (Association Of Lao Architects and Civil Engineers) is a combined institute for Architects and Engineer in Lao due to small numbers of qualified professionals. There are 16 branches in total throughout the country with about 1000 members comprising 600 Engineers and 400 Architects. ALACE is based in Vientiane and publish a bimonthly ALACE Magazine. We were informed that there is not a CPD program in place, ALACE sought PAM assistance on the setting up of a CPD program covering issues such as Code of Ethics, Regulations in relation to the Code and Cross border architectural practice.

The most lasting impression of Vientiane are the wide boulevards and the gridded city planning; a legacy of the French colonial rule. At the end of the main boulevard, the Luang Stupa, national symbol of Laos marks the end of the axis. Every year in November, hundreds of monks gather to accept alms and floral votives from the people.

Next stop - Vangvieng and Xieng Khong

On the way to the mountains, we travel via Vangvieng and Xieng Khong. Vangvieng is eco tourism spot afforded by its spectacular landscape and rivers and very popular with foreigners especially Australians and Koreans.

The main activities are canoeing, hiking and mountain climbing with plenty of affordable hotels and restaurants.

Luang Prabang

This is a UNESCO World Heritage Site consisting of 29 villages(ban); named after the Prabang Statue of the Buddha, which was brought from Khmer by King Fa Ngum who founded Lan Xang Kingdom, or the 'Land of One Million Elephants' in 1354.

Lan Xang (later renamed Luang Prabang) remained the religious and spiritual centre of the region and is situated on a tree lined peninsula between the Mekong and Khan rivers. One of the most fascinating things to do while in Luang Prabang is get up at 6 a.m to observe monks walking in single file collecting alms.



Temple - Vat Xiengthong



Xieng Kuang - Plain of Jars



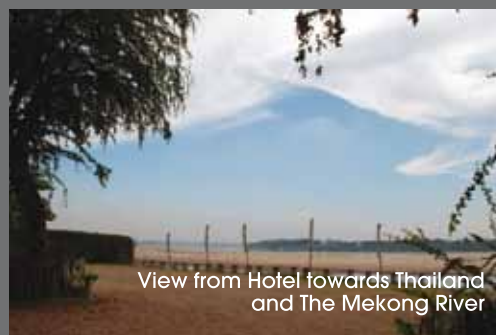
View from Mount Phousi



Dinner hosted by local ALACE branch and vice governor of Luang Prabang



Mountain top rest house



View from Hotel towards Thailand and The Mekong River



ALACE President mr. Sengkham and PAM President Ar.Boon Che Wee at the Vansana Riverside Hotel

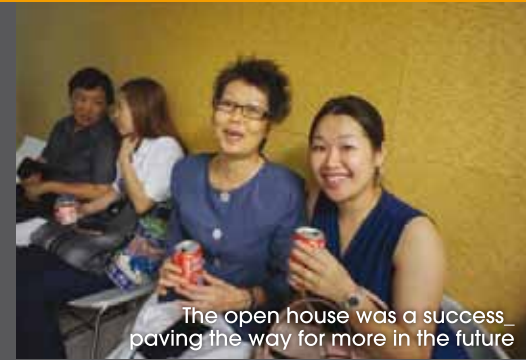
CHINESE NEW YEAR OPEN HOUSE AT PAMSC



PAM member fraternising with the lion dance troupe



For a change - no signing in for CPD points



The open house was a success paving the way for more in the future



PAM members enjoying the food and conversation

This year for the first time, PAMSC hosted a Chinese New Year Open House on the 11th Feb 2011 (Friday). The evening gathering was a joint celebration as it was also an opportunity to thank the sponsors and the organising committee of the upcoming BTS 2011. The event started with a lion dance and the setting off of fire crackers, followed with food and drinks at the seminar room. The function was attended by approximately 120 PAM members and industry partners.



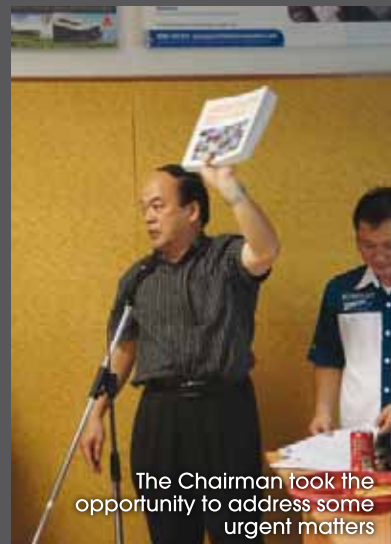
Family members were invited to add festivity to the event



The event got on the way with a lion dance



The lions pays respects to the PAM Chairman



The Chairman took the opportunity to address some urgent matters



A large variety of refreshments were served

PAMSC would like to thank Ar. Chew Chung Yee for attending the LAM Practice Sub-committee meeting held in K.L on the 18th February 2011 on PAMSC behalf.

Points To Note

1.0 LAM to act as stakeholder for Architect's fee

Review and further discussions are still on between LAM and PAM.

2.0 Architect's responsibilities after taking over a project

A circular guidance to architect's in this area is being drafted out.

3.0 Architect's have social responsibility

In a high court case in Sabah, forty-six house owners sued the developer of a housing project for negligence and breach of contract in the construction of their homes and were awarded RM4.6 million in compensation.

These purchasers relied on the professional expertise of the developer to ensure that the houses were built with good workmanship and material. The last thing purchasers want is to take possession of buildings that were defective and required massive remedial work and repair.

LAM reiterated that architects also have social responsibility as well as professional responsibilities when it comes to discharging duties. The Sabah Chapter enquired whether LAM should carry out an investigation on the architects. To this LAM will act if there is a complaint brought up against the architect.

LECTURE BY DATO' DR KENNETH YEANG



Dato' Dr. Ken Yeang posing with some of PAMSC committee members

PAMSC had the pleasure of hosting Dato' Dr. Ken Yeang's lecture on the 26th February 2011 in Kuching.

Dato' Dr. Ken Yeang presented his seminar on the business of architecture in 4 key factors for success (KFS). He also shared with our members attending, his ideas and recent works in particular on green design and master planning.

The members attending also had the benefit of listening to the representative from Victory Plaster Ceiling Sdn. Bhd. on the products benefits. They are the manufacturer brought in by Advance Building Products Sdn. Bhd. who made the seminar possible by their sponsorship.



With some of the members attending, Ar. Hilbert Kueh and Ar. Dato' John Lau



CEILING QUEEN ENERGY BOARD

Advance Building Products Sdn. Bhd.
(768045-H)

WHY IS IT GREEN?

Ceiling Queen Energy Board uses bio technology from Japan and Korea that can generate and emit negative ions and far infrared rays using natural radiation materials, i.e. Tourmaline, Radium, Thorium and Potassium.

Its low thermal conductivity and excellent insulation properties can help to reduce heat generation and energy consumption of the air conditioning system. The micro-ber insulation can also be installed in contact with the ceiling to further enhance its thermal qualities and provide additional heat penetration control.

PRODUCT FEATURES

Safe

- Does not produce toxic fumes of hazardous substances that are harmful to health.
- Passed Emission Test and Formaldehyde Test from PSB Singapore.
- Passed ROHs (Restriction of Hazardous Substances) of Europe Standard.
- Passed heavy metal tests from SGS Malaysia and PSB Singapore.

Energy Efficient

- Energy saving
- Heat/thermal insulation
- Alternative to ionizer and air purifier

Improves Indoor Air Quality

- Purifies the air and provides a fresh environment
- Reduction on sensitiveness such as asthma and sinus
- Prevents the spread and protects from haze, secondary smoke, pollen, bacteria, viruses and fungi
- Neutralises odour, smoke, dust and CO₂
- Neutralises volatile organic compounds (VOCs)

Eco-friendly

- Maded from reuseable and recycled content materials

Economical

- Fire-resistant
- Multiple functions and longer usage



Ms. Lydia Tee, manufacturer and group Director of Victory Plaster Ceiling Sdn. Bhd. introducing the energy board to the audience.

PRODUCT SPECIFICATIONS	Suspended Ceiling	Plaster Ceiling
Thickness in mm	5.5mm	8.8mm
Length x Width in mm	600mm x 1,200mm	900mm x 1,800mm
Average Weight in kg/m ² at EMC	6.7 kg/m ²	7.9 kg/m ²

APPLICABLE GBI CREDITS

NRNC	EE1, EE5, EQ4, MR2
NREB	EE1, EE5, EQ4, MR2
RNC	EE1, EE3, EQ5, EQ6, MR4

GREEN LABELS / ACCREDITATION



Cert No: 041-037
Made from reused Waste Materials

OTHER RATINGS



For The Most Beautiful Roof That Works!

FIBREGLASS ASPHALT SHINGLES

- Fibreglass asphalt shingles
- Laminated architectural design
- F.M. tested class "A" Fire resistance rating
- Limited wind warranty coverage from 60 to 70 mph (97 to 113 km/h)
- 20 to 50 year product warranty
- Easy product installation and maintenance



THE EXCELLENCE OF M-CLASS

- Ceramic Roof Tile with Interlocking System
- Established since 1997
- Water resistance
- Glazed & unglazed finish
- Packing system
- Superior Quality
- Life time durability
- Environment friendly



ONDULINE ROOFING MADE EASY

- Good Heat/Thermal Insulation
- Strong Sound Absorbency
- Waterproof
- Light Weight
- Strong, Durable & Asbestos Free
- Cost Effective
- Easy installation and maintenance



ADVANCE BUILDING PRODUCTS SDN BHD

KUCHING

SL 4, Lot 496, Jalan Muara Tuang,
93250 Kuching, Sarawak, Malaysia.

H/P: 013-365 5962 / 016-877 5801
FAX: 082-628 608

SIBU

No.58, G/Fir, Jln Sg. Antu 3,
Sg. Antu Industrial Estate, 96000 Sibu,
Sarawak, Malaysia

H/P: 014-877 1999 • FAX: 084-328 044

KUALA LUMPUR

No.4, Jalan Ara SD7/4B, Bandar Sri Damansara,
55200 Kuala Lumpur, Malaysia.

H/P: 013-365 5962 • TEL: 603-6277 6488 • FAX: 603-6277 6489
Email: jerus_deco@yahoo.com



SPOT SURVEY SPOT SURVEY SPOT SURVEY SPOT SURVEY

THIS IS YOUR SPOT. Welcome to INTERSECTION's new member-driven segment, which spotlights your views, ideas and 'theories' about anything and everything under the sun. Here, we dive into the mind of the 'Archi-creature', in particular, the Sarawakian Architect.

Our first segment evolves around buildings (surprise, surprise); what buildings you love and why, what buildings you'd be if you were one. Architects, Architectural Graduates and students participated in this questionnaire, which generated many diverse and interesting insights. Enjoy...

WHAT IS YOUR FAVOURITE LOCAL BUILDING IN SARAWAK & WHY?

- 1. ST. JOSEPH'S CATHEDRAL** – Localized form – *Stephen Mong* / Real tropical architecture – *Arlene Chew* / Architecture that never grows old – *Voon Choon Hin* / Not just a building, it is good architecture – *Lau Ming Ng*;
- 2. OLD DUN BUILDING** – Historic, timeless modernist design, beautiful & very good detailing – *Kushahrin Hj. Kushairy*;
- 3. NEW DUN BUILDING** – Contains unique elements of Sarawak's heritage – *Mohd. Khairul Na'im*;
- 4. SARAWAK MUSEUM** – Historic – *Lau Chai Sing* / Makes me happy – *Vincent Tan*;
- 5. KENYALANG PARK SHOPHOUSES** – Good urban-planning; cozy, compact & vibrant; simple, functional and good workmanship; concrete fins put contractors today to shame – *Suh Chee*;
- 6. CIVIC CENTRE** – Because its UFO design reminds me of my childhood – *Kueh Yen Chiew*;
- 7. MASJID JAMEK** – Simple but architecturally pure and powerful – *Nurina*;
- 8. ASTANA** – Distinctive & fantastic living environment – *Ricky Hong*;
- 9. PULLMAN HOTEL** – Interesting skylight – *Abg Razali Abdillah*;

WHAT IS YOUR FAVOURITE BUILDING IN THE WORLD & WHY?

- 1. LOUVRE, PARIS** – I can't think how it can be done better – *Vincent Tan* / Simple yet stunning, iconic – *Alison Ong* / It houses so many great paintings...I want them all! – *Suh Chee*;

- 2. SYDNEY OPERA HOUSE** – Iconic form, breathtaking location – *Stephen Mong*;
- 3. GHERKIN, LONDON** – Purity in Form & refined choice of finishes – *Nurina*;
- 4. REICHSTAD, BERLIN** – Concept of transparent government translated into Architecture through material, lighting and space planning – *Abg Razali Abdillah*;
- 5. FORBIDDEN CITY, BEIJING** – Systematic & well thought out – *Ricky Hong*;
- 6. FALLING WATER, USA** – A timeless monument to organic architecture at its best – *Lau Chai Sing*;
- 7. CHAPEL OF NOTRE DAME DU HAUT @ RONCHAMP** – Timeless architecture – *Lau Ming Ng*;
- 8. MY HOME** – Because it's home sweet home – *Suh Chee*;

IF YOU WERE A BUILDING IN MALAYSIA, WHICH BUILDING WOULD YOU BE AND WHY?

- 1. PETRONAS TWIN TOWERS (winner by far)** – To be famous internationally – *Abg Razali Abdillah* / So that everyone can see me from a distance standing tall and marking the cityscape – *Nurina* / Gives identity to country – *Vincent Tan* / I can see the furthest from this height – *Voon Choon Hin*;
- 2. KLIA** – So that I can welcome people from over the world to our country – *Kushahrin Hj. Kushairy*;
- 3. 20-FOOT CONTAINER** – Because I get abused and by default, become 'multi-purpose' – *Stephen Mong*;
- 4. MY HOME** – My dwelling place – *Lau Ming Ng*;
- 5. I DO NOT WISH TO BE A BUILDING.** – *Alison Ong*.





The old nurse quarters at jalan crookshank



Under the hammer, Kuching's past being dismantled

REMINISCING KUCHING

It is our pleasure to inform you that we are starting a column entitled 'Reminiscing Kuching'. We will be featuring a series of public building projects completed by the Public Works Department amongst others in Kuching during the early decades of our independence. This period saw a drastic progress in building and infrastructure development nationwide.

Many of these early buildings evoke memories of a bygone era and capture the spirit of an epoch that witnessed social and political changes that were taking place in the country. Their architecture is set against the backdrop of the globalisation of architectural ideas and an ongoing nationalist endeavour to evolve a national architecture. As more and more buildings from this era buckle under the name of progress and development, it is perhaps timely that we should revisit these buildings that hold a special place in our collective memory.

In conjunction to this new column in INTERSECTION, members are requested to write in with information on buildings in this era. In particular, information relating to the persons responsible for these buildings; photos, anecdotes, letters, drawings - all are welcomed. contact PAMSC (insert contact details)

EDUCATION FAIR 19TH - 20TH MARCH 2011



(Group pic) PAMSC members and architectural students posing with fellow co-counsellors for the 19th February session. Seen are representative from the Accounting, Town Planning, Land Surveyors and the Law fraternity.

Recently Ultimate professional Centre (S) Sdn. Bhd. accepted an invite by the organisers of the International Education Fair 2011 held at Borneo Convention Centre, Kuching to provide career guidance and counselling for the public attending the fair.

PAMSC committee members along with a few architectural students participated in the event on the 19th and 20th February 2011.



The public viewing UPC booth





Article by Wong ZiXin
Photos by ZX and Henry



A street food festival takes place here on weekend evenings, where you can experience a different, energetic and young Siniawan.



A relaxing Saturday morning breakfast in Siniawan, watching and listening to the locals.



REVISITING SINIAWAN

Having heard so much about Siniawan, it certainly did more than impress when I saw it in the flesh. This tiny town is a great source of historical and architectural pride; within our community and the wider context.

A mere thirty minutes drive from Kuching, Siniawan is a treasure trove for photography, architecture and history enthusiasts, the recent night market adds to her potential to bring in visitors. This is critical in boosting Siniawan's local economy while increasing our awareness towards the importance of preserving and protecting local history.

As an architecture student – Siniawan presents herself to me most vividly in her architectural features and details in the normally mundane elements; fenestration on shophouse fronts, carvings and decoration on timber doors and windows usually with evidence of belief in fengshui. One cannot help but notice the weathered textures, the beautiful and almost romantic materiality are presented to us; a quietly spoken narrative of her past if you are willing to listen.

Since its 'revival', Siniawan has produced more attractions other than its architectural charms such as the night market and food fair. Arrive before dusk and watch the transformation from a quiet sleepy town into a bustling hive of good food and music. This initiative slowly makes us aware of Siniawan's great potential as a cultural tourism spot. It affirms our belief that our local architectural heritage can be harnessed to be sustainable commercially with the involvement of the inhabitants and in doing so, guarantee its historical and cultural preservation.

End



It is a great way to unwind and spoil yourself with the selection of food available (and perhaps enjoy the singing of karaoke enthusiasts on stage).

The Advanced Materials

The Significant Differences...



POLYUREA SEAMLESS MEMBRANE WATERPROOFING



Exposed Trafficable Waterproofing for Concrete Roof



Anti-Corrosion Coatings

Anti-Carbonations Coatings

Resin Flooring

Roof Coating

Waterproofing

- Resin Flooring
- Anti-Static Coatings
- Epoxy & PU Grout
- Roof Coatings
- Anti-Skid Coatings
- Concrete Repair Materials
- Anti-Corrosion Coatings
- Anti-Bacterial Coatings
- Waterproofing
- Anti-Carbonations Coatings
- Underwater Epoxy Coatings
- Tank & Pond Lining



For more information, please contact:

PLC Laboratory Sdn. Bhd. (345458-D)

No. 8, Jalan TPP 6/13, Taman Perindustrian Puchong, 47160 Puchong, Selangor Darul Ehsan.

Tel: +603 8060 4584 Fax: +603 8060 4676 E-mail: email@plc.com.my



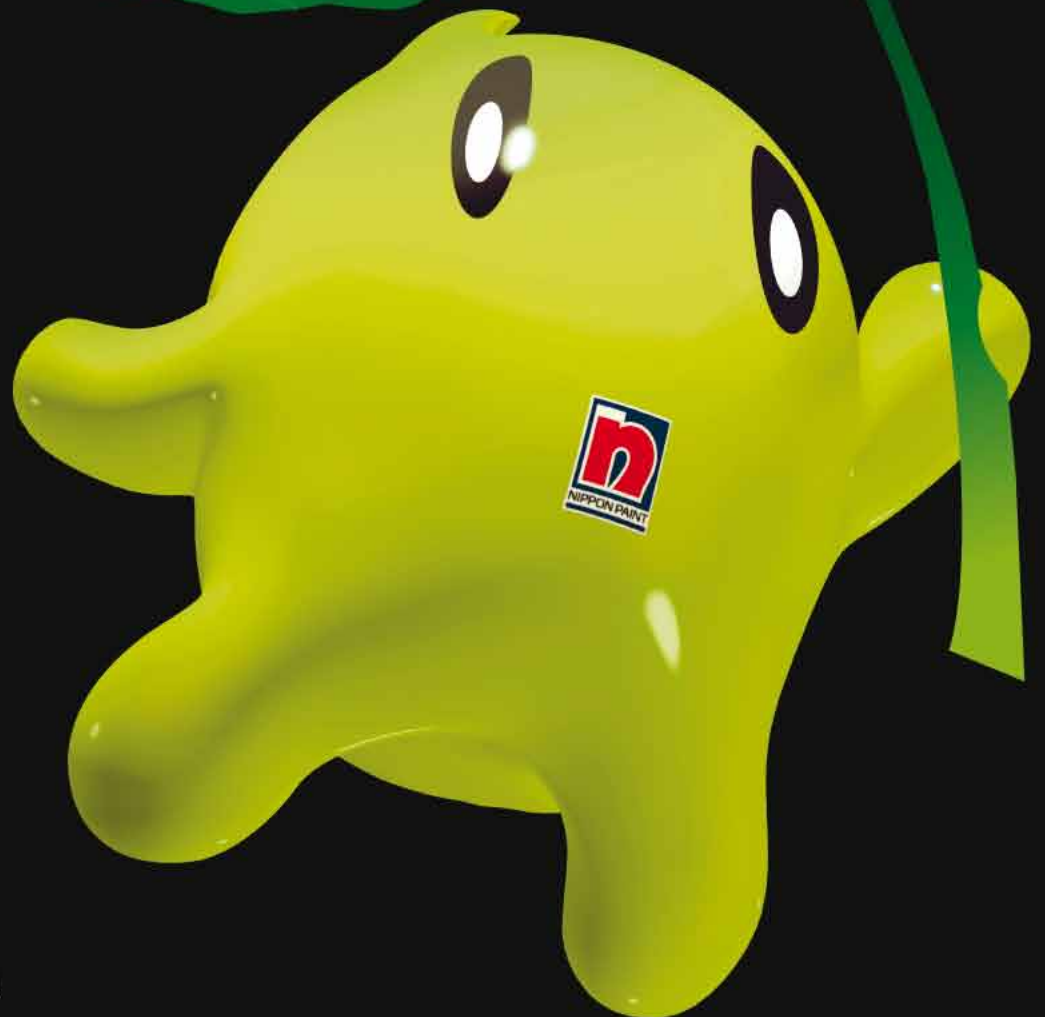
www.plc.com.my

THE COMPLETE RANGE OF HEALTH AND ECO-FRIENDLY PAINTS

The Green Choice Range, with near-zero VOC*.

Visit nipponpaint.com.my or contact us at 1800-88-2663.

We'll be pleased to share more information about our total green solutions.



GREEN CHOICE



Interior



Exterior

Wood and Metal

Wall Sealer

*VOCs (Volatile Organic Compounds) are harmful chemicals that cause air pollution, global warming, soil and groundwater contamination, and contribute to various health problems.



The Paint Expert™

1-800-88-2663 www.nipponpaint.com.my