



**PAM**  
Pertubuhan Akitek  
Malaysia  
Sarawak Chapter

# PAM AWARDS

- The Backstory-



# INTERSECTION

Architectural practices in Miri  
Taking Europe by Storm  
BTS & Gala Dinner 2013

ISSUE NO 1/2013  
July 2013

For Members Only

# CHAIRMAN'S ADDRESS



**W**armest greetings to all PAMSC members and friends!

First of all, I would like to express my sincere gratitude to our Immediate Past Chairman, Ar. Peter Wong for his exceptional dedication, leadership and guidance for the past two terms.

It is a great honour to be given the trust to lead the chapter for the coming term.

One of the first activities in my term was the Study Trip to Europe covering Frankfurt, Dusseldorf, Antwerp, Brussels and Paris. On the

24th of May, the Chapter hosted a gathering where several of our members presented slide shows documenting their experience. My thanks to Meng Kang, Kelvin, Chee Wee, Peggy, Mike and others who worked to make the event a success; I was especially touched by the spirit of camaraderie and good cheer among members.

The PAMKL annual dinner was held on the 11th May during which three local firms won awards in several categories; congratulations to our members who again did us proud - namely

- i) Design Network Architects won Gold in the Sports and Recreation category .
- ii) JFN Architect won Gold in the Alteration and Addition category and
- iii) Integrated Design Consultants won a Commendation in Sport and Recreation category.

Details of these entries are featured in this issue, together with the other entries from Sarawak.

As we face increasingly challenging times in our profession, PAMSC will continue to engage with the government agencies and local authorities on policies that affect our profession and the building industry.

In the coming month, KASKA (JTCC) Joint Technical Consultative Committee will raise issues pertaining to the Sarawak Building Ordinance (SBO) and the Building Plans Approval process. Members are reminded that while the JTCC was set up to improve efficiency on all matters related to BP approval, it is also an appeal body for architects - so members are strongly encouraged to take advantage of these avenues that are open to them.

In relation to this, we are planning outreach programmes for our members in other towns and cities of Sarawak in the coming months.

Lastly I would like to thank my committee members as we continue to engage with government agencies and local authorities on policies that affect our profession. To serve you better ,we urge members to continue to contribute ideas and highlight issues to take up with relevant authorities. This will improve PAMSC's standing and influence in our community.

Thank you.

**Ar. Stephen Liew**  
PAMSC Chairman



From left ( sitting ) : Ar. Mike Boon, Ar. Stephen Mong, Ar. Peter Wong, Ar. Bong Joon Hin, Ar. Stephen Liew, Ar. John Lee Hok Kong, Ar. Tan Kiat Soon, Ar. Kho Meng K'ang and Ar. Felix Wee Lik Chiang ( standing ) Ar. Chai Si Yong and Ar. Ivy Jong. Absent: Ms Peggy Wong, Ar. Ng Chee Wee, Ar. Wee Hii Min and Mr Kevin Phua.

## COMMITTEE LIST 2013 - 2014

### Chairman

Ar. Stephen Liew Ngian Chin

### Deputy Chairman

Ar. Mike Boon Chee Khian  
Conservation & Sustainable Design  
(Chairman)

### Vice Chairman

Ar. Kho Meng K'ang  
Events & Exhibition (Chairman)  
Government Liaison  
(Sub-committee Member)

### Hon. Secretary

Ar. Stephen Mong Vui Min

### Hon. Treasurer

Ar. Tan Kiat Soon  
Government Liaison  
(Sub-committee Member)

### Immediate Past Chairman

Ar. Peter Wong King Lai  
CPD & Practice (Chairman)  
Government Liaison  
(Sub-committee Member)

### Committee Member

Ar. Wee Hii Min  
Media & Publication (Chairman)

Ar. Bong Joon Hin  
Government Liaison (Chairman)

Ar. Chai Si Yong  
IT & Education (Chairman)

Ar. Felix Wee Lik Chiang  
Secretariat & PR (Chairman)

Ar. Ivy Jong - Graduates (Chairman)

Ar. John Lee Hok Kong

### Co-opt Members

Ar. Ng Chee Wee  
Conservation & Sustainable Design  
(Sub-committee Member)

Mr. Kevin Phua Siaw Chiat  
Conservation & Sustainable Design  
(Sub-committee Member)

Ms. Peggy Wong Bik Kay  
Events & Exhibition  
(Sub-committee Member)

### Sub-Committee Members

Mr. Michael Cheu Teck Lian  
Media & Publication  
IT & Education  
(Sub-committee Member)

Mr. Tay Tze Yong  
Media & Publication  
IT & Education  
(Sub-committee Member)

En. Mohammad Royzaid  
Media & Publication, IT & Education  
(Sub-committee Member)

Mr. Mark Curtis Anak Josem  
Media & Publication, IT & Education  
(Sub-committee Member)

Ar. Philip Chang Foh Ping  
Government Liaison  
(Sub-committee Member)

Mr. Ricky Hong Kok Kiong  
Inter Prof. Games  
(Co-ordinator)

# “It’s the water we drink.....”



The Bau Civic Centre was one of the first buildings to win a PAM Award; it won Gold in the Institutional Buildings category in 1991. It was my first experience with the Awards, helping to prepare the submission documents. I was working with KDI then and asked to the awards ceremony, John Lau, Marcel Wu and Roger Chu attended instead. And rightly so. How naive to think that putting some text on paper on the end of the project gives one ownership of the project.

We live and learn - I have forgotten the embarrassment but not the lesson. Thanks, John.

- I tell them when asked why Sarawakian firms feature consistently at the PAM Awards. Together with a strong dose of motivation and pride in one’s work; I neglect to tell them.

**T**his year, 3 out of the 16 nominated entries from Sarawak won prizes in their categories. All 16 are featured in this issue to gain an insight into this cross section of selected work. INTERSECTION will feature some of these projects in detail soon and work with the IT subcommittee to upload them on to the PAMSC website. In doing so, we fulfil one of our Chapter’s ambitions, which is to showcase our members’ projects and promote a culture of sharing and talking about our work.

As promised, our ‘outreach’ project started by contacting our peers in Miri to share details of their practice, projects and philosophy. Some of whom are seasoned ‘campaigners’ while others are no longer practicing and one is on the edge of starting his great adventure into sole proprietorship. They all share one thing in common - the willingness to talk about their work and their thoughts about architecture. Even those not currently in practice, express strong opinions about architecture, as they perhaps now have had time to reflect and continue learning as Andrew Chin (page 10) tells us in our conversation with him.

I encountered that same ‘sparkle’ when speaking to the PAM Award nominees - they become more animated like parents talking about their child. Pride is strong motivation, which to my mind is a good thing. Like proud parents queuing their children to recite poetry or play Bach on the cello in front of a crowd - we can use others as benchmarks to raise our own standards. Asian families are raised on the concept of each generation doing / being better than the previous.

And it is like parenting, we are in for the long haul in order to improve our buildings, and like absent fathers we need constant reminding that design does not end at the stage of conception (though for the fathers the analogy may be too close to the truth) Neither does it end at the butter-paper (schematic design) stage, but continues well into the construction stage. Good designers keep a watchful eye over their creations, collaborating with technicians, engineers, builders and fabricators to refine their designs.

Renzo Piano is known to monitor the development and production drawings after hours by marking and making comments in distinctive green ink. Glenn Murcutt spends entire weekends on site with builders to discuss construction details.

There is plenty of local potential as can be seen in the projects in this issue; we might need to take it up a notch and if it involves taking risks - then do so. Especially those of us blessed with projects whose programme has public impact, now is your chance to leave a legacy.

As a final note and along the theme of producing good design - here are two of our latest local creations; Josiah Lau and Chai Yung Enn - conceived with detail and forethought, developed with care and both handed over after a standard construction period of 9 months, but with incredibly long defects liability periods (18 years at least. Longer for girls, I hear)

Congratulations, Si Yong and Siew Lee; Mingi and Suh Chee.

Keep Calm and support breast feeding,

**Min**  
Editor (July 2013)  
with the invaluable assistance of  
Ivy, Hui Joo and Si Yong



Yung Enn



Josiah and Eunice

# PAM AWARDS 2013

## The Backstory

**This year**, PAM bestowed a total of 22 awards from 14 categories, selected from 182 entries throughout the country.

**This year**, 3 entries from Sarawak won prizes thus prolonging our run of winning PAM Awards since 2006.

**This year**, instead of focusing solely on the winners - we decided to turn the spotlight on the 16 entries from Sarawak - to congratulate them on their efforts and to encourage other Sarawakian architects to participate in showcasing their work.

Well done, guys - keep up the good work!



### Jury's Citation

The project offers a lesson on the concept of cradle to cradle in architecture. It re-uses materials to erect a new community hall. The careful juxtaposition of different functional volumes and common materials has produced an inviting architecture for the everyday.

## GOLD WINNER



### Jury's Citation

The stand-alone gymnasium is an outcome of a thoughtful plan with a pragmatic use of the site terrain. Its spectacle arises from the celebration of solar shading and an integration of facade maintenance need. There is a witty innovation in which the perforated panels of a proprietary landscaping element or component are left unplanted and improvised imaginatively as sun screen for the glazed facade.

### Veil-suited by Design Network Architects Sdn Bhd \*(S&R)

This custom designed gym and health centre is located on a difficult site, a small and angular piece of land near a major highway with its main frontage facing west and to compound its problems, the terrain slopes from the front to the rear where the site entry is located. The completed building appears to take advantage of these disadvantages. The terrain is carved to create a sub-basement carpark, seeming to elevate the building onto a plinth especially when viewed from the highway. The angles of the site are "borrowed" to shape the building whose sculptural form befits its small stature. Throughout the building, there is an economy of finishes; what appears to be a lush and complex sun shade on its facade turns out to be affordable irrigation mats mounted in a matrix.

## GOLD WINNER



### Jury's Citation

This house contributes a refreshing approach to renovation in which spatial versatility and intimacy are achieved with architectural interventions using profile sheeting, screens, louvres and moving panels. It fully utilizes the in-between realms created for light filtering, garden inserts and an illusion of depth for small dwelling.

### Container House by Arkitek JFN Sdn Bhd \*(A&A)

This project explores the potential of reimagining a tired 1980s semi-detached house design, and the possibilities of common industrial materials. The house was reduced to its 'core' structural frame and brick enclosure. An insulated metal 'skin' was wrapped around the 'core' to improve thermal performance. Internal spaces were then rearranged to suit current needs with cabinetry doubling as sliding doors, and walls concealing cabinetry. Intergrated 'outside rooms' were created with dense foliage and materials salvaged from the demolition. The house became an elevated, unitary, metal-clad, extruded form, with metal screens finishing the glazed ends. Screens, which provide shading and privacy, transform when viewed from moving vehicles. The architect's identity was masked during construction to gauge the public reaction to the construction and to generate discourse about the project. Slowing traffic suggests that people are interested in the changing character of the front elevation, thus engaging the public in the process.



**KTS Anniversay Park & Function Hall  
by Integrated Design Consultant  
(IDC) \*(S&R)**

This project started as a corporate social responsibility initiative to convert a vacant property into a public space for the benefit of Kuching residents, while waiting for the right opportunity to be developed. It consists of a landscaped public park, a multi-purpose function hall with capacity for 600 persons. The main structural steel frame of the function hall is salvaged from a disused warehouse. Due to its temporary nature, the construction method and most of the materials were selected based on their ability to be recycled or relocated.

Used the steel structure of an old industrial shed  
columns coupled with the selective adornment of



**Integrated Design Consultant &  
DesignEast Offices, Jalan Chan Chin Ann,  
Kuching by Integrated Design Consultant  
(IDC) \*(A&A)**

This is a conversion of two adjoining 1960's shop house units into offices for IDC – creating a spacious and light-filled work environment with views of the Sarawak River. The project uses recycled elements - discarded newsprint tubes is a feature wall while exposed brick is a backdrop for their art collection; the reception desk is lined with oxidized steel plate and recycled timber boards and an industrial steel screen is now a light fixture.

This is a good example of how difficult-to-rent spaces can be re-purposed in exciting new ways.



**Unimas Student Pavilion by David Ong Architect \*(P&I)**

USP originated from the idea of a Student Centre where most students' activities converge into one common place. USP achieves this on a bigger scale with more facilities provided for students to socialize and relax, at the edge of a man-made lake. The informal setting is achieved by a series of independent single-storey building structures at ground level linked by a covered walkway; blending themselves into the natural surroundings.

USP is a pilot GREEN project by UNIMAS achieving a GBI GOLD Rating.



**Visitor Centre at Taman Negara Gunung Gading, Lundu by Atelier Timur Sdn Bhd \*(P&I)**

This Visitor Centre is an annex to the Park's existing timber Baruk building on a small sloping site. The new annex reads clearly as the main administrative and information centre, with legible public spaces designed for multiple activities; enhancing ones' experience of the building and the park. The new open deck with 'forest of columns' beneath The Baruk completes the physical and visual linkages while giving the old structure a new lease of life.

Built on a tight budget, the 'raw boldness' of the new concrete structure contrasts and highlights the finely detailed existing timber Baruk structure; imparting a graceful co-existence.

**Cove 55, Santubong by Atelier Timur Sdn Bhd \*(SR)**

COVE 55 is a family retreat on two-acres facing the Buntal-Santubong bay with Mount Santubong as its backdrop. The L-shaped plan and careful site placement maximizes views of the bay and creates a semi enclosed courtyard which acts as a buffer between the site and the sea. Vernacular yet contemporary in design, this stately home is imbued with the owner's rich cultural identity.

The house is spacious yet intimate with thoughtfully articulated interior spaces that highlight the family's art collection.



**56 Hotel by Intodesign Laboratory in Collaboration with J.H. Bong Architect \*(P&I)**

The facade of this 6-storey business hotel was derived from the hotel's corporate logo which is inspired by the Dayak 'manik' beads- transforming it into a 3-dimensional pattern that envelopes the building. This vibrant and colourful treatment aims to make up for the hotel's lack of visibility from the main road; being on lower ground and behind shop houses.

The exterior motifs are continued into the ground floor lobby area, wrapping the ceiling and interior wall like a band that loops outside in. The facade design then becomes the new 'corporate identity' of the hotel; through its architecture.



**Sarawak State's Education Department Office (JPNS) by PU Architects Sdn Bhd \*(P&I)**

Located at Petra Jaya as part of masterplan for Federal Complexes, this 5-storey office building is the new headquarters for the State Education Department. It sits on a hilltop along an East-West axis to optimize views all around & to maximize natural light on all sides. It contains administrative spaces, public areas, a reception lobby, 240-seat auditorium with conference and meeting rooms as well as space for a future Multipurpose Hall.

The building aims to portray the strength and authority of a public institution reminiscent of the past.



**Sarawak Youth & Sports Complex & New Aquatic Centre by PU Architects Sdn Bhd \*(P&I)**

The Sarawak Youth & Sports Complex cum New Aquatic Centre is one of the best sports training facilities in the country, complete with an all-weather 8 lane FINA standard swimming pool, badminton courts, a gym and courts for futsal, basketball and volleyball. An administrative block with lecture halls, two hostels blocks and a canteen completes the list of facilities.

The building's long street frontage faces west - deep overhangs and a rhythmic facade of louvres were used to address the street, shield from the sun and to break down the buildings' mass.



**Sungai Apong's Public Toilet by Majlis Bandaraya Kuching Sarawak \*(P&I)**

This public toilet was one of Majlis Bandaraya Kuching Selatan's in-house project implemented in 2012. It supports the popular Sg. Apong market where different ethnic communities congregate to sell seafood, vegetables and jungle produce. The toilet structure is planned with a central courtyard in order to preserve an existing tree; there a tank collects rain water to cleaning and flushing of toilets.

This project succeeds in its aim to be a 'green toilet' - designed to maximize the use of natural ventilation, daylight and rain water.



**Sarawak's Civil Defence District Office (JPAM) by P U Architects Sdn Bhd \*(P&I)**



The Sarawak Civil Defence District Office (JPAM) is located at Jalan Diplomatik, Petra Jaya, Kuching, sits on a 5.10 acre land that comprises 3 storeys of Operation Block, & a 4 storey Training Tower. The facilities were designed based on the operation of the agency to provide a conducive, comfortable, effective and efficient working environment. The linear gridded design, like built-up lego blocks is to accommodate the usage of IBS system in this project (IBS blocks, precast concrete slab, metal roof structures, standardized windows and doors). The architecture is responsive to the client's needs for a strong public identity, clockwork-like efficiency, discipline & organized, thus, character strongly etched and imbued in the design.



**Academic Complex for Universiti Putra Malaysia Bintulu Campus by PU Architects Sdn Bhd \*(EDU)**

The project is conceived as a series of low rise buildings symmetrically laid out in response to the site and is interconnected with pathways around a central courtyard in order to optimize natural daylight and protection from glare while open courtyards ensure air movement to ensure comfortable work environment. The building forms interact with the open spaces to allow interaction between movement of people and their activities.

The building complex is able to sit comfortably in context with its surroundings while presenting itself as a unique and engaging landmark.

**Under One Roof by Intodesign Laboratory in Collaboration with Chaisiyong Architect \*(SR)**

The owners' family has occupied this site for three generations in an old timber house which was later extended to serve as an automobile workshop. Recently, the old house was demolished to make use for a weekend house for three families; not before salvaging components from the old house to be used in the new one.

As such, the rebuilding of the house was much like a process of reassembling remnants of the owner's past for the owner.



**Upgrading Of Teachers Training Institute, Batu Lintang, Kuching by Konsortium Bumi Consultants & Services Sdn. Bhd \*(EDU)**

The upgrading of the Teacher's Training College in Kuching required a sensitive approach as many of the adjacent buildings were built in 1960's and possess significant architectural values. The siting of these existing 'regional modern' buildings became the guiding force for the new buildings' planning and design.

The design also took into consideration the visual impact created upon arrival at the campus where one would view buildings from afar and be drawn towards it; wanting to see more.

The buildings which comprise the administrative block, the library cum student centre and existing ICT block are arranged to address formal issues such as axes and approach while creating intimate spaces in between; it is exemplary in finding a sensitive balance through the application of basic architectural principles.



**Rodway House by Arkitek Nurcipta Sdn Bhd \*(SR)**

This house was designed for the needs of a small family with large art collection. As such, it appears that the house is a gallery with living spaces inserted into its functions; starting from the entry through the living spaces into the studies and bedrooms.

The choice of finishes complements the atrium and staircase with seamless glass to visually connect the interior spaces and brings the whole house together. Good climate control is attained with a well insulated roof, double glazed doors and windows and double brick walls on the east and west.



\* Categories: **P&I** - Public And Institutional, **A&A** - Alterations and Additions, **EDU** - Education, **S&R** - Sports and Recreation, **SR** - Single Residential

# ARCHITECTURAL PRACTICES IN MIRI

We record our conversations with them here to highlight what our peers are doing in their home-towns.

Some battle on in the field of architecture while some have ventured into construction and development. Dato' Wee and Ar. Jeffrey Phang have done one better by positioning themselves in the City Council to advise in the shaping of their city.

We tried our best to connect with all the architects listed in the PAMSC contact list, if we have missed anyone, it is not intentional.

## INTRODUCTION

Dato Ar. Wee Han Wen was the former Chairman of Miri Council and founding partner of United Consultants, Miri. Intersection spoke to him about his journey as architect-city builder-mayor.

**I: Intersection** D: Dato Wee

**I: Dato, were you born and bred in Miri ?**

**A:** Yes, I was born in Miri. Other than five years studying in Australia and one and half years working in JKR Headquarters, Kuching, I have been living in Miri all this time.

**I: Where did you complete your University education ?**

**A:** I graduated from University of Newcastle, Australia with a degree of 'Bachelor of Science (Architecture)' in 1972. Another degree of 'Bachelor of Architecture' was obtained in 1974 with the same university.

**I: After serving at JKR Miri, you set up United Consultants, Miri in 1981 - how was UC different from the other architectural practices then ?**

**A:** At that time, UC was probably the only architectural cum engineering consultant firm with qualified architect and engineer based in Miri. The key difference of our firm as compared to other consultant firms was perhaps the full range of consultancy services which could be provided within the same firm in the old days.

**I: Tell us how you became Chairman of the Miri Council and how your training as an architect helped in the shaping of city planning policies and Miri itself ?**

**A:** I was quite active in SUPP since 1985. In 1988, I was appointed as a councillor of Miri Municipal Council through recommendation by SUPP Miri. After serving five years as a councillor, the party recommended me for the post of chairman in the Council. This was 1993 when I started serving the Miri community as the chairman of Miri Municipal Council and later on as the Mayor of Miri City Council on 20th May 2005 when Miri was elevated to its city status.



Dato Wee presenting Grading Award to Coffeeshop Owner.

**A:** As an architect by profession, perhaps I was more particular in terms of built environment when I was serving in the Council. My experience and knowledge in architecture made it more relevant when dealing with matters in relation to town planning, landscaping, environmental protection, traffic circulation, building design and concepts as well as many other smaller aspects of council's daily routine works.

With my involvement and along with other councillors and council staff who were all able to cooperate well in planning and formulating policies for the Council, we were able to carry out tasks and draft new policies in more practical and effective manner.

In terms of meeting the requirements of city status, quite a few critical aspects were also closely related to the architectural field. The main ones are requirements of having a museum, an university, reasonable development and facilities in the town. As an architect, it was certainly an advantage for me to understand better and able to plan towards achieving the goal with full support of my other colleagues in contributing efforts on other aspects.

**I: Now that you are no longer in practice, what do you think of the new developments in Miri ?**

**A:** In order to be a city having sustainable development, Miri needs to look into proper planning of future developments especially if Miri is to become an attractive resort city.

Miri was quite fortunate in the past because a lot of facilities such as hotels, resorts, educational centres and medical facilities were built by the private sector in enhancing the government's effort. This contribution from the people of Miri made it faster in city development. Hopefully this trend can continue but we also wish to urge the private sector not to sacrifice our environment when developing their projects.

To go alongside with the focus on tourism, the people of Miri must also foresee the potential of this objective and be friendly, honest, humble plus providing good hospitable services to tourists coming to the city.

## UNITED CONSULTANTS ARCHITECTS SDN BHD

(1981 - present) United Consultants was established firstly in Miri, Sarawak in 1981 and a year later in Kuching; both offices providing architectural and engineering services. In 2000, in order to abide by current professional board regulations, United Consultants was re-structured to be solely Engineering while a new entity, United Consultants Architects Sdn Bhd, was created to continue its services in Architecture, Interior Design, Landscaping and Urban Design.



Ar. Yong Wan Lian, who heads the Miri office joined the firm in 1985; Ar. Phillip Chang is the Managing Partner. They are involved in a wide range of projects in particular, educational centers and medical centres. They believe that their concepts and designs are based strongly on functionalism with a constant view of the surrounding context of development. A wider perspective of how each project fits into the surrounding built environment is necessary to the built design.

## RECENT PROJECTS



Library and Auditorium Complex for Curtin University Sarawak Campus Miri.





**TT ARCHITECT** (March, 1994 – present); Principal Architect: Ar. Tang Tiong Ping was born in Sibü; he attended Do Nang Primary School, later Kwong Hua Middle School and Methodist Middle School in Sibü. In 1984 he entered University of Melbourne, Australia after a spell at Elwood High School.

After graduation, he worked with Public Works Department in Kuching; in April 1987, he joined Kuching Rural District Council. Since 1994, TT Architect is involved residential and commercial projects; industrial, institutional and religious buildings as well as contract/project management.

**RECENT PROJECTS**



Proposed Church Building



**GORDON ARCHITECT** (1997 – present) Principal Architect: Ar. Gordon Chew Pak Tung (B:Miri); he attended Pujut Primary School and St. Joseph's Secondary School in Miri before graduating from University of Arkansas in the States in 1987. Worked with Perunding Dayacipta until 1997 when he formed Gordon Architect. His office is involved in a wide variety of building; well known for large to very large bungalows.

**RECENT PROJECTS**



Emart Sibü



**HBL ARCHITECT** (1992 – present) Principal Architect: Ar. Lau Hin Bee. Cipta Teguh Architects Sdn Bhd, Kuala Lumpur (Director). Graduated from Strathclyde University, Scotland, United Kingdom after his school at Kolej Tun Hj Bujang, Miri. After graduation, he worked with HLM Architects, Glasgow (Scotland), John Clark Architect (London), Building Design Partnership (London) and Wise Consortium Sdn Bhd (Kuala Lumpur) before forming HBL Architect in 1997.

The practice is involved in a large variety of projects and believes that it is important "Not to jeopardize 'good architecture' whilst fulfilling the needs of our Clients."

**RECENT PROJECTS**



Hotel



John Lau Architect Miri office

**JOHN LAU ARCHITECT** (1997 – present) Principal Architect: John Lau Ngee Tack was born in Sibü where he attended S.R.K. Chung Hua, Sibü and S.M.K. Chung Hua, Miri. In 1991, John graduated from University of New South Wales, Australia, after which he worked with Freddie H K Chia Architects, Singapore and later with Shin Yang Group of Companies in Miri.

In 1997 he formed John Lau Architect and has been involved in houses and housing, commercial, industrial, school and hotel buildings as well as project management services. They believe that - "A good piece of architecture should not only meet the comfort of the inhabitants but also the larger context of sustainability that covers economical, ecological and social needs of humankind."

**RECENT PROJECTS**



Housing

AND OLD LADY



60 room Boutique Hotel in Sepang, KL

## JEFFERY PHANG ARCHITECT (July 2013)

Quietly spoken and amiable, Jeffery agreed to be interviewed during a DATUM tea-break.

We talked about his practice due to start in July and his first job after graduating from University Technology Malaysia (UTM), Johor - as Municipal Architect and subsequently as the City Architect in 2005 when Miri was elevated to City Status. He served for more than ten years (Aug '99 to Mar '10) and was entrusted with work relating to building control, building development and building maintenance. He even found time to study part time obtaining an M. Sc in Emergency Response and Planning from University Putra Malaysia in 2002 and passed his Past Part III exam in 2007.

In 2010, Jeffery joined United Consultants Architect in Miri, which he regarded as a good learning experience for the past three years. He feels he better appreciates architecture now as he is able to see it from different perspectives; as a practitioner and a law enforcer in the past.

We wish every success in his new practice.



2005 Award for Best Building Design for Wah Ming Optical Factory By Shenzhen Longgang District Council, China PRC.

## CATCHING UP WITH ITINERANT FRIENDS

**Andrew Chin obtained his B.A (Hons) Arch in Birmingham, Post Graduate Diploma and Masters in Architecture from the Mackintosh School of Architecture. He worked in the UK before working in Singapore with William Lim and Associate in 1993.**

**I first met Andrew when we were working at Kumpulan Design in 1997. Since then, he has been to many places and done even more. So it seemed like a good time to catch with him since he is from Miri. (interview conducted via WeChat)**

**I: Intersection** A: Andrew

**I: You returned to Sarawak in 1997 after a long spell overseas...**

A: I decided to return to Asia after 9 years overseas to improve my chances of finding an Asian wife.

But after 4 years in Singapore, I decided on a change of scene and returned to Sarawak and that's where we met, together with Sia Peh Swee, William Khoo and Johnson Tan, at KDI.

**I: ..and then you left Sarawak,**

A: When I was working in KDI, my wife (then fiancée) was in Hong Kong, so in 1991, I went to work in Hong Kong as a design and project architect for two firms; Nelson Chen Architects for a year and then Ling Chan & Partners Ltd, doing some large housing projects.

**I: ...then came to interesting part;**

A: Yes, then came the interesting part which was the setting up of my own practice Fosa Ltd - doing some nice projects in China and Taiwan (pictured) and winning awards.

**I: ..and then you returned to Sarawak again...**

A: The decision was made in 2002, my mother was unwell and my father needed help with his business. So, wanting to fulfill the duty of "good son" after 18 years abroad, compounded by the prospect of HK Cantonese education for my children, hectic architectural life, limited apartment space, poor quality of life - all contributed to the decision to return after 36 years.

A: The first 2 years of business were challenging. In fact, my target was 2 yrs and if things didn't work out, I would return to architecture. Somehow the business picked up and I discovered that selling products is easier compared to 'selling' architecture - it's a piece of cake!! Time flies and we now 10 years in Miri. Now I have more time with the family, playing badminton twice a week; my wife and kids are happy, my dog is happy. So I guess that's enough for now.

A: I still love architecture, it gives me hope that William Lim only started his practice at 49! But I would not return to mainstream architecture as I believe the process is very unsustainable.

**I: ..good to hear that architecture is still part of your life...**

A: Of course! It is in my blood. I am still buying architectural books; one a year. I am currently reading "Cities for People" by Jan Gehl; I spend 10 minutes on Archdaily every morning and still subscribe to SA Journal. Lately I am very interested in the work of Anna Heringer and TyinTegnestue as their architecture genuinely contributes to humanity.

**I: Always good talking to you Andrew, thanks.**

Guan Yu Pavilion Shenzhen 2006 : can be opened and closed during worshipping Guan Kung.



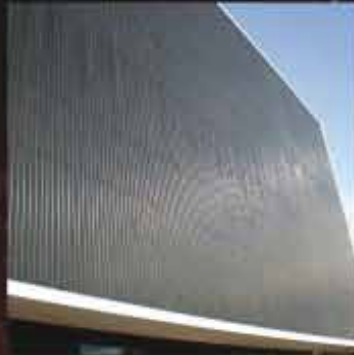


# DML Products (Borneo) Sdn. Bhd.

Manufacturer of Metal Ceiling and Louvers



• Strip Ceiling •



• Strip Fascade •



• Sun Louvres •



• Ventilation Louvres •



• Box Louvres •



• Aerofoil •



• Aeropoint •



• Tile Ceiling •

**DML PRODUCTS (BORNEO) SDN BHD** (742099-D)  
*(Manufacturer of Metal Ceiling and Louvers)*

QUALITY ENSURED:        

Lot 872, Demak Laut Industrial Park, Phase 3, Jalan Bako, 93050 Kuching, Sarawak. Email: [service@dml.com.my](mailto:service@dml.com.my) Website: [www.dml.com.my](http://www.dml.com.my)  
Tel: 082-432062 Mobile: +6016-889 0172 (Angeline Lim) / +6016-889 0173 (Alex Ting) Fax: 082-432049

build better, live better

# SHERA™



License No. 043-005  
Made from 90% Recycled Materials

# SHERA



www.SHERAsolution.com

residential commercial industrial



## SHERA wood SHERA board

**GREEN  
INNOVATION**

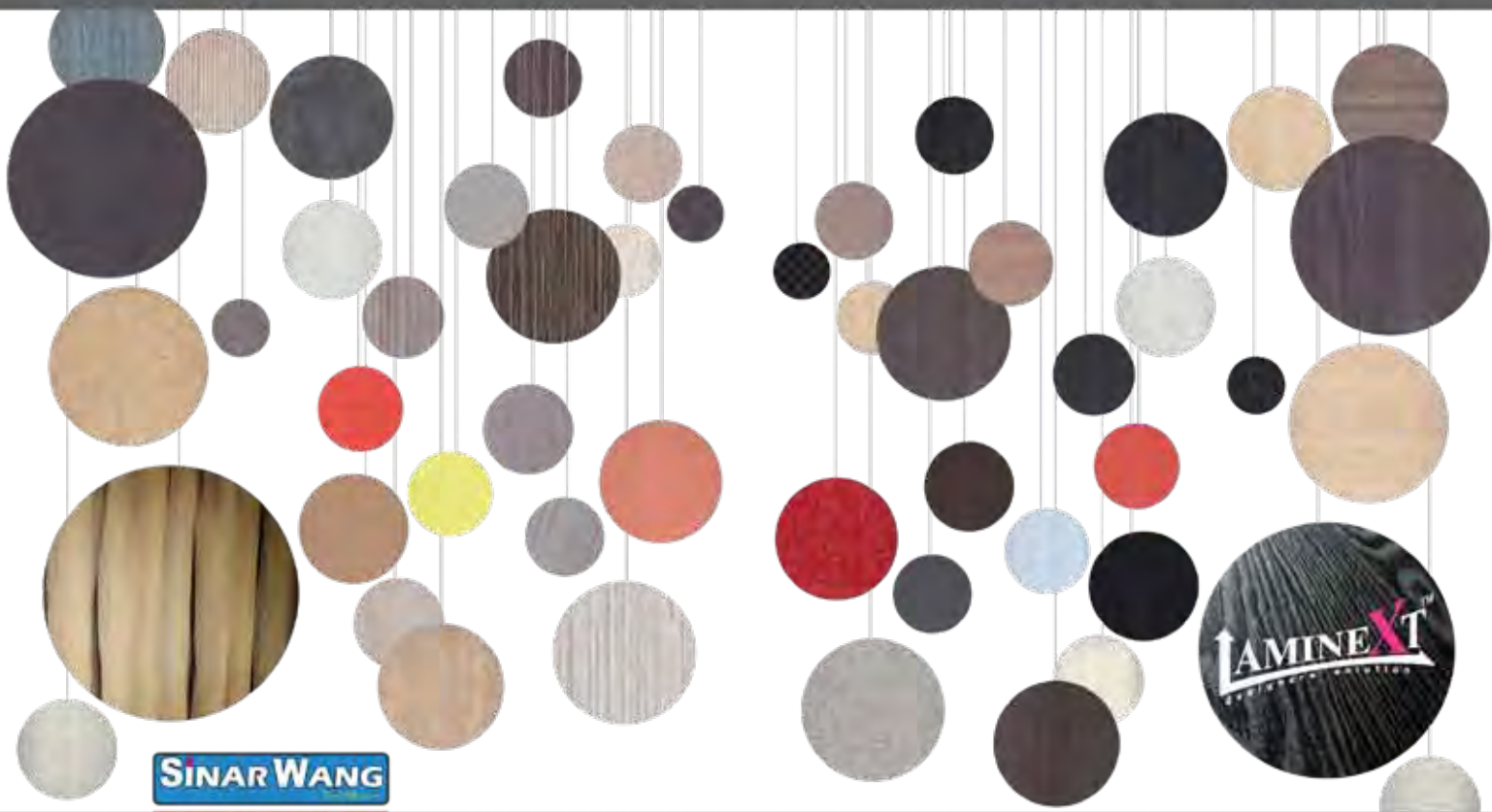
GBI Credits  
LEED Credits  
IBS SYSTEM



**Head Office & Showroom** | Lot 79 & 80, Lorong Perak 22, Sri Mergong Industrial Park, 05150 Alor Setar, Kedah, Malaysia.  
T>04 733 6567 F>04 7311220 w> www.suriwong.com.my

**PJ Office & Showroom** | Block B-08-03, Plaza Kelana Jaya, Jalan SS7/13A, Petaling Jaya, 47301 Selangor Darul Ehsan, Malaysia.  
T>03 7877 8121 F>03 7877 9121 e> shera@suriwong.com.my

**East Malaysia** | **Syarikat Global Niaga**  
Sublot 1618, Lot 10, Lrg 6A Muara Tabuan Light Industrial Park, 93350, Kuching, Sarawak Malaysia.  
T>082-333929 F>082-336929 w>www.globalniaga.net e>kenlaw@globalniaga.net



**SINAR WANG**

**2013-2014**  
**collection**

Sinar Wang Products & Services (S'wak) Sdn Bhd  
No. 630, Blk 11, Lot 762, MTL D, Phase 1,  
Tabuan Jaya Shophouse,  
Lorong 2B1, Jalan Urat Mata,  
93350, Kuching, Sarawak, Malaysia.

h/p : 012 - 68 66 567 / 013 - 83 38 929  
tel : 082 - 36 69 69 / 082 - 3663 28 / 082 - 36 67 67  
fax : 082 - 36 69 69  
website : www.sinarwang.com  
email : dorina@sinarwang.com



We supply the latest building & decorative materials & products.



• HETTICH (GERMANY)  
Furniture Fitting & Application  
• SIBU DESIGN (AUSTRIA)  
Decorative Surface Material

• PROJECT RAHMENPROFILE (GERMANY)  
Door & Shutter Profile  
• REHAU ROLLER SHUTTLE (GERMANY)  
• UV MEMBRANCE CABINET DOORS

• SHERA (THAILAND)  
New Cement Products  
• TOSCAN PANEL  
Decorative Wall Panel

• VINYL IN TILES & ROLL FORM (USA)  
• INTERFACE CARPET TILES (USA)  
• LAMINATE FLOORING (GERMANY)  
• IRONMONGERY

• CERICH  
Solid Surface Material  
• VENEER PLYWOOD  
Both Formal And Decor Veneer



SYARIKAT GLOBALNIAGA

# TRUWOODS



globalniaga.net

**OUTDOOR DECKING** SUSPENSION SYSTEM

**DIY DECK TILES**



Walkways



Pool Surround



Restaurant



Residential



**Pro-Innovation**



**Pro-Solid**

**Dimension**

- 25 mm x 145 mm x 2200 mm
- 20 mm x 145 mm x 2200 mm

**Colour**

- Brown (STC 01)
- Gray (STC 02)



**EASY FUN THAT'S LIFE**



Decorate your balcony / porch / patio, garden / courtyard with this innovative eco-friendly wood plastic composite DIY deck tile system now available from Anhui sentai WPC. It is not only affordable but also very easy to install by yourself or even your kids!  
The WPC DIY deck tile system is consists of tiles that can be quickly and easily to snap together to form a very nice, neat and professional look that you will be proud of!!!  
Just enjoy playing it with your family in a lovely weekend that is fun and happiness, and that is outdoor life!!!



Tiles have a grooved anti-slip surface



Stainless steel screws secure the tile to the base



The base is made from recycled PP (polypropylene) UV resistant material

SYARIKAT GLOBALNIAGA  
Main Office / Warehouse :  
Lot 1816, Sublot 10,  
Lorong 6A-Jalan Setia Rain,  
Taman Perumahan @ Muzia Tabuan,  
Phase 2,  
93350 Kuching,  
Sarawak, Malaysia.  
Ms Angel  
H/P : 019 - 827926  
Tel : 082 - 333 926  
Fax : 012 - 336 929  
Email : kenliw@globalniaga.net  
Website : www.globalniaga.net

For this year's PAMSC study trip, Chee Wee' s programme saw 24 Sarawakians

# T A K I N G E U R O P E



Spring has sprung,  
Travel guides said,  
But not in Frankfurt  
her flowers still in bed.



We stopped at **Cologne** on the way to **Dusseldorf** - and visited the Cologne Cathedral ( or Koln Dom moving statues in the plaza entreated us with "guo-lai pa, guo-lai pa". This is birthplace of the 4711 Cologne, the favourite of our grandmothers who sprinkle some on their hankies on a hot days.



**Antwerp** was memorable because of its mussels which Desmond paid for, and the dark beers which he also paid for. Other highlights included the Law Courts (not pictured) by Forster and MAAS Museum near the docks, the facade of this building is dotted with replicas of a cut right hand. (\* the first 3 readers to tell us the significance of this in relation to Antwerp wins a free lunch at the Carvery. Email answers to weehiimin@gmail.com)



Group photo taken at the gardens of the Dusseldorf Museum.



**Amsterdam** was a sunny change of scenery; the first leaves of spring, sparkling canals even the people seemed friendlier. There was a sudden spring to our step, and for a promise to visit the Gassan Diamond factory, we were taken on a free canal cruise.



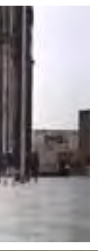
The Louvre, met Mona here. Mystic smile or caustic sneer? There's a myth, it's just bad teeth.

The Eiffel Tower was meant to be a temporary structure as the entrance arch to the 1889 World's Fair, but has remained to become a distinctive silhouette in the Paris skyline and in wedding portraits all over the world.



# E B Y S T O R M ,

...a little bit like Napoleon



) where Eau de

In **Dusseldorf**, we visited the MediaHafen or Media Harbour which is a revitalised part of the city with many buildings by prominent architects such as Gehry. The problem is it did not feel re-vitalised, even the offices that we looked into were half empty.



**Brussels** was cold and bleak even her trees have gone to sleep, their arms crossed, heads bowed in repose. We have no much to report.

We visited the WoZoCo housing project, by MRVDV - later that day we visited another of their housing projects; the Silodam.



At the Gassan Diamond Showroom some couples renew their vows.



Lè ping pong



The following day, we visited the Paul Klee collection and modern art installations at the Dusseldorf Modern Art Museum - a historic building restored with a glass atrium and set in scenic gardens.

Stedelijk Museum in **Amsterdam** is perched like a sea bird on the verge of flight while the NEMO museum (not pictured) clad in green copper alludes to sea faring vessel of the past.



Keen to keep abreast on all time zones - Bong, JH Bong shows how - 'it is not a watch, it is an investment'.

Nicole our local guide told us that love story that was the genesis of Versailles; she had us captivated and wishing that our Sejarah teachers were more like her.



# RE-IMAGINING MEMORY

PAMSC Workshop with UPM



Crit at St Mary's assembly hall.

In March, PAMSC conducted another design workshop with Universiti Putra Malaysia; this is the second such workshop - this time with 24 Fourth Year students. The workshop was conducted by Ar Chai Si Yong, Tay Tze Yong and Wong Siew Ling with UPM Puan Kalsom Mohd as coordinators. The students were in Kuching as part of the design studio site analysis and PAMSC offered to add value to their outing, which the school gladly accepted.

This time the brief centred around the premise that

- **That** not all we remember is true
- **That** fiction becomes fact with repeated telling
- **That** in the long run, it is not important to distinguish myth from history;

The teams were challenged to take on an underutilised part of Kuching and re-activate its modern day usage by re-writing its history or its re-imagined 'past'.

The site selected was at the Kuching South Town (MBKS) Hall compounds, the Jubilee Hall, the Jubilee Sports Grounds and the Kuching South Swimming Pool.

The students were briefed on their first day in Kuching and told to nominate times and place for the supervisors to meet up with them over the next 5 days. The flexibility in the programme was to cultivate initiative and self motivation in the students and to cause them to explore beyond the fringes of Kuching town.

The students managed to get permission to use the St. Mary's school assembly hall for their 'crits' room which took place after work at 5:30 p.m. each day. The workshop culminated in the presentation of 3 schemes at the PAMSC Centre Monday, 25th March 2013. It was attended by members of the local chapter to offer feedback and advice.

The schemes submitted by the 3 groups were varied; dealing the city's identity associated with its continual functional as a cultural, social and recreational hub - through a series of interventions that re-adapted themselves to suit the planned activities. A simple dinner was hosted by PAMSC which capped off a productive week long exercise.

**These workshops are part of PAMSC's initiative to reach out to architecture schools in order to promote interaction between students and practitioners, and to alleviate the value of design thinking and camaraderie amongst members of our profession.**



The students put up a good 'show' despite the short time given.



Si Yong lends an understanding ear as these Fourth Year students make their point.



Xing Yi explains their scheme with Mohd. Hisham using a series of light box images.



Grace Teoh and See Chin presenting their "skyweb" scheme.



Hand sketches and simple models are efficient means of communication for design workshops.





the  
**architecture**  
that makes our brand today

# BTS & PAM GALA DINNER 2013



Committee member, Ar. Ivy Jong welcoming Dato Abg. Johari with a copy of INTERSECTION.



PAMSC Chairman presenting a memento to Dato Abg. Johari as Ar Peter Wong and PAM President looks on.

In March this year, PAMSC held their 3th Building Trade Show (BTS) at BCCK with a total of 105 exhibition booths with thousands of visitors over the one week period. The event was officially opened by Minister for Housing, Dato Seri Abang Johari Tun Openg; and sponsored by WEIDA.



Mr Kevin Phua and director of HomeMax, Paul Lim.



Mr Teo, GM Johari about



From left: Sr. Paul Tiong, Ar. Law Kim Chui, Ar. David Wong, Ar. Ken Goh, Mr. Kevin Phua and Mr. Adrian Kong.



Speakers from the Design Forum being interviewed.



Peggy Wong, Clara Voon, Jeffrey Yeung and amongst the guests that evening.

The Shanghai-themed Gala dinner saw many of the guests arriving in costume; in hope of winning prizes for Best Dressed categories. PAMSC gala dinners are held every two years in conjunction with the BTS while the 'Members Night' is held on the intervening years. This year's Gala Dinner was held at the Four Points Sheraton and attended by more than 400 people.



2nd Prize winner of Best Dressed Male - Alan Lau from IDC.



3rd Prize winner of Best Dressed Male - Bensen from Lysaght.



The Grand Prize Gangnam.



Kelvin Hong of Titan (Sarawak) Sdn. Bhd. in a duet.



Entertainer Janet Lee and Ar. Tan Beng Kung.



Finalist doing "gangnam style" for grand prize.



of Nippon Paint is giving Dato Abang his products as Ar. Peter looks on.



Dato' Abang Johari being briefed about Lysaght products.



Opening ceremony of BTS 2013 at BCCK.



Best Booth Design - First Prize WEIDA; Second Prize AMCAN; Third Prize KIMGRESS



Irene Lim were



A prominent member of the Shanghai Triad.



Mr. Gregers Reimann, one of the speakers at Design Forum 2013.



3rd Prize winner of Best Dressed Female - Denise Boon.

From left: PAMSC Chairman, Ar. Stephen Liew and winners of Best Booth Design : WEIDA (Gold Award), AMCAN (Silver Award), KIMGRESS (Bronze Award), and Kevin Phua.

In conjunction with BTS 2013, the PAMSC Design Forum 2013 was held on 23rd March with the theme "Sustainable Architecture - Greening the Future"

There were 6 speakers invited this year; Mr Khew Sin Khoon - CEO of **CPG Corporation Pte Ltd**, Singapore talked about Gardens by the Bay and the Khoo Teck Phuat Hospital, where the public are engaged in green initiatives such as looking after the hospital's vegetable gardens.

Mr Haoru Chen - Principal of **Citiarc International Architects** in Hanzhou presented a more cerebral approach to sustainable architecture which requires immersion into the history, culture and "aura" of a place. Prof. Dr Donald Ellsmore from **University of Melbourne** questioned the sufficiency of preserving our physical heritage only whilst culture is often lost along the process; raising the need for architects to be more engaged on the intangible aspects of conservation. The other speakers were Mr Gregers Reimann - **IEN Consultants**, KL , Mr Darren Neo - **Vertical Greens**; Mr Poh Choon Hock - **Centre for Urban Greenery and Ecology**, both from Singapore.

The Forum was attended by around 210 architects, architectural graduates, students and members of the public and sponsored by Bluescope Lysaght Sdn. Bhd.

## 38<sup>th</sup> Annual General Meeting

On the 30<sup>th</sup> March 2013, PAMSC held their 38<sup>th</sup> Annual General Meeting which was attended by 25 members - resulted in the election of the PAMSC committee for a new term - Ar. Peter Wong handed over the reins to new Chairman of PAMSC; Ar. Stephen Liew.

## CPD Seminar : Flooring

This event was held on 27 Apr 2013 (Saturday) at PAMSC. Speaker Mr. Kumar Balen explained various type of flooring system and also examples of their common problems and solutions. The seminar adjourned by noon and 38 members attended the seminar.

## Sharing + Movie Nite: Apr 2013

On 5 April 2013, Jeffrey Yeung of KTS shared his experiences and the design process of the KTS Garden with 15 persons at the PAMSC premises. Two movies were shown after the sharing session, namely 'Adaptive Reuse in Netherlands' & 'Architecture 2030'.

## Post Europe Trip Gathering at PAMSC

As part of the Europe trip, PAMSC organised a get-together for members to share some of the insights and stories from the Europe trip that took them through Germany, Belgium, Netherlands, France and Italy.

Kevin Wong talked about his German experience while Peggy and Min talked about Paris and Amsterdam. Chee Wee gave an informative talk about Italy, Carlos Scarpa and being pick pocketed by Italian women.

## Colour in Buildings Competition

**PAMSC** was represented in the judging of the "Colour in Buildings Competition" when Wee Hii Min joined PAM President Chan Seong Aun and MIID (Malaysian Institute of Interior Designers) Treasurer, Mr. Vincent Lee on the jury panel. There were two categories; interior and exterior with five prizes awarded in each category.

The Convenor for this competition is Ar. Chris Yap, who confirms that the results will be announced during the DATUM KL weekend.

## Professional Games 2013

This year's games will be held in the month of July unto August 2013. Great fun, commadarie cum net working with fellow professionals to be had. The confirm games organized are: Futsal, Golf, Badminton, Darts and Bowling.

PAMSC would very much like to invite all members to partake. Interested members to contact PAMSC to let Melinda or Christina know so the respective captains for the games can get in touch to organize the PAMSC teams for this two yearly event.



## Career Talk Smk Serian

In collaboration with other professional societies, Ultimate Professional Centre (UPC) invited PAMSC to a Career Guidance Talk at SMK Serian on 3 Apr 2013. Students were given a short introduction of the profession by various professional institutions and then followed by a Career Exhibition at their school's hall. Ar Ivy and Si Yong represented PAMSC in giving a talk to the hundreds of students from that school.



## PAMSC speaks to Kommuniti Kolej

In May, Ar. Ivy and Min were invited by Kommuniti Kolej to present a talk to their students about the role of draughting staff within the architectural practice. The talk was conducted in the Yayasan Sarawak in Santubong. The talk was attended by about 30 students and teachers, some of whom travelled from their Betong campus



## Team Corbusier

**T**eam Corbusier is an elite bicycle racing team started by a group of Kuching architects some five years ago. The original aim was to promote cycling, architectural awareness and camaraderie. However, they have grown highly competitive in the recent months and is now a top amateur club in Sarawak with podium placings in many races throughout the country.

In 2013, Team Corbusier will represent Sarawak for the first time at Tour of Malaysia and Tour of Borneo, both top tier UCI races. Meanwhile the mountain bike team will compete under Corbusier – PowerBar in the GP Malaysia Mountain Bike Series. They will be led by Ar. Safri Mohammed and Encik Mohammad Royzaid Musa, both from PU Architect.

## Reminiscing Forgotten Treasure... Simanggang



### Community-based Cultural Heritage Conservation Project in Sri Aman

**A**fter much anticipation, the Sarawak Government funded project to conserve Fort Alice for Adaptive Re-use as a local Heritage Museum, is scheduled to commence works on 28th May 2013. The project is implemented by JKR Sarawak. Jabatan Muzium Sarawak will be responsible to set up the local Heritage Museum with input from the Conservation Architect and a specialist consultant.

This conservation project provides an opportunity to engage all the relevant stakeholders in preserving their local cultural heritage. In conjunction but independent to the government's conservation project, the Sarawak Heritage Society (SHS) has taken the lead to initiate a community-based cultural heritage conservation programme called "Reminiscence Forgotten Treasure... Simanggang". This is SHS's second series of the much acclaimed community programme first implemented in Siniawan called "Reminiscence Forgotten Treasure... Siniawan".

This community-based project aims to promote awareness in cultural heritage conservation in Sri Aman. It is a community based project organised through Non-Government Organisations (NGOs), professional bodies, local community organisations and individuals, without government and political interference. This project is solely funded by SHS, Co-Organiser Malaysian Institute of Architects Sarawak Chapter (PAMSC) and their Corporate Partner NS Bluescope Lysaght (Sarawak) Sdn Bhd (Lysaght). Simanggang Soon Heng Society (SSHS) as the Local Partner plays an important role in programme implementation and logistic coordination. This project is also supported by Jabatan Muzium Sarawak (JMS) and The Talents and Arts Performing Group (WuJiaoJi).

Ar. Mike Boon



Fire at Upper Shoplot Next To PAMSC Premises (13 May 2013)

**DON'T WORRY!  
WE ARE FINE**

## Fire ! Fire !

**T**here was a small fire in the shop lot adjacent to our PAMSC premises on Monday 13 May - giving Melinda and Christina a scare as they arrived for work that day. Fortunately, Bomba and the police were at hand to save the situation and put out the fire which was apparently caused by a gas cooker.

PAMSC premises were undamaged.

Publisher: **PAMSC Publication and Information Committee**

Designer: **Aleph Tav Enterprise** (92250)

H/P: (HJ Chen) +6017 850 3683 (Lee) +6012 895 1334 Email: alephtavart@gmail.com  
FB page: Aleph Tav art Blog: (Eng)alephtavart.wordpress.com (Chi)alephtavart.blogspot.com

Printer: **WISMA PRINTING SDN BHD**

No. 1949, 1st Floor, Jalan Tekad, Pending Industrial Estate, 93450 Kuching, Sarawak. Tel: 082 338 131 Fax: 082 333 002  
Email: wisma@po.jaring.my

成利玻璃有限公司  
 SENG LEE GLASS SDN. BHD.  
 (087675-T)

eurogroove

INFINI  
 SL38

SOLIDE  
 SL28 / SL886 / SL18

BIFOLD  
 SL86

Seng Lee Glass  
 Your Right Choice

Security  Beauty  UV Screening  Acoustically Insulating



Casement Window



Top Hung Window



Sliding Window



Sliding Door



Swing Door

Lot 9575, Jalan Pending, 93450 Kuching, Sarawak, Malaysia.

Email : info@sengleeglass.com

Tel : + 6 082 337733

www.sengleeglass.com

Fax : + 6 082 332255

*Style, Quality & Comfort*

DOLPHIN TJP



*That's where it all begins*

T.J. POTTERY SDN.BHD. (176202-U)

TEL NO: +605-201 4525 (H/L), +605-201 1993 FAX NO: +605-201 4503

I-HOME MARKETING SDN . BHD. (497273-A) | KUCHING BRANCH

No. 30, 1st Floor, Lot 7050, Jalan Sekama, 93300 Kuching, Sarawak. | Tel /Fax : 082-345525 | HP : 016-5244383



# Innovating & Building for Environmental Sustainability



Weida (M) Bhd (“WEIDA”) is a diversified company listed on the Main Market of Bursa Malaysia Securities Berhad.

With a team of 1,600 professionals and support personnel in Malaysia, the Philippines and the Middle East, WEIDA and its subsidiaries (“the Group”) have maintained a keen focus on delivering comprehensive and viable environmental engineering solutions across a wide range of synergised divisions: full service engineering solutions, water resource management, renewable energy and environmental conservation, pipeline services, and rural infrastructure. Over the years, the Group has also marked its presence in telecommunication infrastructure and oil palm plantation.

- Full Service Engineering Solutions
- Water Resource Management
- Renewable Energy & Conservation
- Stormwater Management
- Recycling & Rehabilitation
- Rural Infrastructure Solutions
- HDPE Manufacturing
- International Technology Transfer
- Telecommunication Infrastructure
- Oil Palm Plantation



**Momento™**  
Special Effect Paint



Sparkle Pearl  
Lemon Peel **MP 049**

Complement with



Odour-less AirCare  
Mansion Gold **5043D**



Odour-less AirCare  
Star Magnolia **6031P**

# EVERY WALL IS A CANVAS FOR A MASTERPIECE.



**Elegant**

Showpiece textures



**Sparkle Gold**

Majestic shimmer



**Sparkle Silver**

Elegant reflections



**Sparkle Pearl**

Captivating glow

Rustic, yet chic. Grand, yet charming. Stylish, yet spectacular. Discover a new definition to works of art with Nippon Momento™. Turn ordinary walls into extraordinary masterpieces and explore myriad textures and colours with our Sparkle Gold, Sparkle Silver, Sparkle Pearl and Elegant variants. For inspiration and tips, visit [www.nipponpaint.com.my](http://www.nipponpaint.com.my)



**The Paint Expert™**

1-800-88-2663 [www.nipponpaint.com.my](http://www.nipponpaint.com.my)

*All colours shown are as close to the actual Nippon Paint colours as modern printing techniques permit. Colours appearance/finishing will vary according to amount of coats, style of stroke applied and individual painting methods.*