

Delight

Efforts in restructuring the Secretariat are starting to bear fruit. First off, PAMSC employed a new administrative assistant: Ms. Lee Kao Choo, to assist Ms. Melinda Leong in coping with increasing workload. Additionally, the Secretariat Standing Policy, which redefines the staff's job scope and responsibilities, have been implemented. Under the new system, staff track activity progress with a checklist system. The next attempt is to codify administration and operation procedures.

The Practice and Government Liaison sub-committee members have been busy attending many meetings with authorities. The sub-committee's key task is to review the Sarawak Building Ordinance 1994, and has been invited to present professional views through dialogues on regulations and submission procedures. It has been a long process but improvements to the system are expected to be announced by relevant authorities.

More events and CPDs have been scheduled, and the response from CPD sponsorships has been encouraging as we select relevant speakers to deliver interesting topics. The Chairman's Night has been revived, when traditionally the new Chairman throws a party for members.

Publication and Media sub-committee has been consistent in delivering a quality newsletter, and it sustains itself through advertisements. We also strive to maintain regular media exposure to heighten PAMSC's professional status in the society.



In addition to tutorials organised by the Education and Graduate sub-committee, the tutorials conducted by PAM President Ar. Mohd Zulhemlee An and Ar. Wan Sofiah Wan Ishak must have boosted the candidates' confidence. Following a successful 24-hour design workshop for architecture students at LimKokWing University (Borneo Campus), the winning entry will be installed at the Kuching Central Padang in October for World Architecture Day (WAD). The same programme will be conducted at UCTS in Sibiu in September, while we are hoping to offer the same opportunity to UITM (Samarahan Campus) students.

Recently, PAMSC with the Sarawak Heritage Society jointly organised two lectures by Dr. Jon Lim and John Ting, with two heritage site visits to the Old Hokkien Free School in August and Charles Brooke Memorial Hospital (Leprosy Museum) in September.

In October, PAMSC Centre will be undergoing a 15-week renovation to increase storage space and upgrade equipment - PAMSC would like to record our appreciation to Ar. Felix Wee who prepared drawings and documents for the renovation as well as Ar. Ivy Jong and Ar. Tay Buang Chuan who will supervise the work. The renovation work will be implemented in stages while the Centre remains in operation.

The Chapter continues to receive strong support from PAM President and Council Members. On the 5-6th of September, the PAM President and Office Bearers visited us for a dialogue session with members, and join the Charles Brooke Memorial Hospital visit, during which they will hand over subsidies for WAD (RM 20,000) and Centre Renovation (RM 50,000).

PAMSC would like to thank our industry partners who are sponsoring our events and the advertising in our newsletter, website and at the PAM Centre. In light of the current economic situation, we will try our best to weather the storm by working more closely with our industry partners in upcoming endeavours.

This year, PAMSC participated in the Inter-professional Games organised by UPC. The training sessions provided a fantastic platform for the young and old to foster closer relationships. We urge members to be more engaged with PAM to keep themselves updated on the local, national and international developments which will affect the profession. Finally, please visit PAMSC website to give comments and suggestions to improve our Chapter.

Mike Boon
PAMSC Chairman 2015-16

Delight

The topic for this issue is the result of an overheard conversation between two architects.

The topic of their conversation was whether more architectural good is achieved through policy changes in planning, or elemental revisions of the building guidelines such as the recent 'Revised Guidelines to Extension of Landed Residential Properties' issued by the Lands and Survey Department. One imagines that changes in planning guidelines would have large scale and sweeping impact in future projects. While the revised guidelines would immediately affect existing buildings, thus having more impact on the common man. This is small scale change to our built environment, but change often starts with something small. As Mies puts in - 'Architecture begins when two bricks are put together well'.

So, in this issue, we feature the 'less-than-large' projects; where the lack of size does not diminish the quest to provide beyond protection against the elements. And chooses instead to bring meaning and that other quality in their designs - one that reaches out to a soft part of your body, and squeezes; resulting in a 'ooohh' of appreciation - delight.

The church in Pa'dang by Ar. Wong Siew Ling uses simple details and local materials; thoughtful in its engagement of the end-users in its construction, grounded in its grassroots. Two other projects, the 'Plug-in House' and 'Cat House' are by women architects. They demonstrate how the built conditions can be expanded in clever and unconventional ways - one by melding the new and the existing with a new architectural 'fabric' while the other chooses to stand detached from its past. Our final project is an interior fit-out of a food court, one that uses intangible elements from our memory to enrich the act of eating.

The delight continues as we celebrate Akimedia's success at the PAM Awards - their UCTS - University College of Technology, Sibiu - won a Silver Award in the Education Category. This will be the venue for PAMSC's second 24-hour design workshop this year on the 26-27th of September for over 110 students from UCTS and Kolej Laila Taib.

Our Chapter has been busy taking part in and organising CPD lectures, heritage visits, design workshops, dialogues with government agencies, inter-professional games and much more. We have tried our best to report them and keep you abreast of these activities, and would like to thank our contributors.

Happy reading,
The Notorious Baldie



with Ivy, Pik Shia and Si Yong



.....more beneficial for the common man.



PAMSC EXECUTIVE COMMITTEE & SUB-COMMITTEES 2015 - 2016

First Row (Left to Right):
Ar. Stephen Mong Vui Min, Ar. Chai Si Yong, Ar. John Lee Hok Kong (Hon. Treasurer) Ar. Kho Meng K'ang (Vice Chairman), Ar. Mike Boon Chee Khian (Chairman), Ar. Bong Joon Hin (Deputy Chairman), Ar. Tan Kiat Soon (Hon. Secretary), Ar. Andy Ngu Tai Kong, Ar. Tay Buang Chua

Second Row (Left to Right):
Miss Nora Khalid, Ar. Leong Pik Shia, Ar. Peter Wong King Lai, Ar. Wee Hii Min, Ar. Hubert Kueh Peng Yaw, Ar. Ivy Jong, Ar. Ng Chee Wee, Mr. Kevin Phua Siaw Chiat, Miss Peggy Wong Bik Kay, Ar. Felix Wee Lik Chiang, Ar. Noraini Narodden, Ar. Bong Kuet Leng, Ar. Desmond Kuek Teck Hiong

Why Architecture Matters

Four selected projects that demonstrate why architecture matters - by invoking an emotional response in the user, by providing more than just the necessary, with solutions that verge on the artistic and impractical, with elements of delight.

Pa' dang Church

- A Volunteer Mission by Ar. Wong Siew Ling



Background

Pa'dang is a Penan settlement carved out of a small valley in the River Adang, about 5 hours' drive via logging roads from Lawas. About 15 years ago, Christian missionaries started a scheme to settle the nomadic Penans. It was quite successful and in 1997, they harvested the first rice crop which may have led to a change in the mindset of these nomadic people.

This is a joint community project between SIB (Sidang Injil Borneo) and Methodist Church of Sarawak to help the Penan community. The build was from 5th-11th July 2015 with 32 volunteers, only 5 of them had building experience. The site is accessible only by foot. The building was built completely by hand, and teamwork using simple details and local timber in an effort to include the local Penan people volunteers in the building process.

The church and community hall for 200 people is a simple architectural response to a magnificent site and climate.

Completed - 5th September 2015.

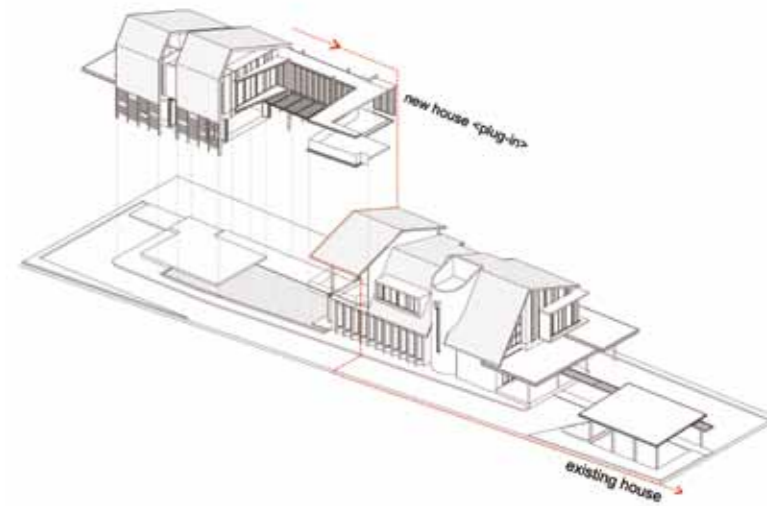


Plug-in House

by Suan Lam INTODESIGN Lab

This is an extension to a detached house in Kenyalang Park - built in the mid-1980s', with a linear plan due to its elongated site. The existing house is located on the middle of the land and was originally the site of their seafood business until a few years ago when the business moved to larger premises. With the back yard vacated, the original owners (the grandparents) wanted the house extended for three generations to live together.

The architect used two strategies to design the new house; the first was to maximize the build-up area without sacrificing natural lighting, ventilation and comfort. A planted courtyard garden and pool provided the relief space between new and existing - defining the link where the new house is 'plugged in' to the original house. The second aim was to synchronize the overall form of the old and new house. The extended house was designed in the manner of a modest steel shed with metal roofing material in the memory of the original cold storage sheds in the backyard.



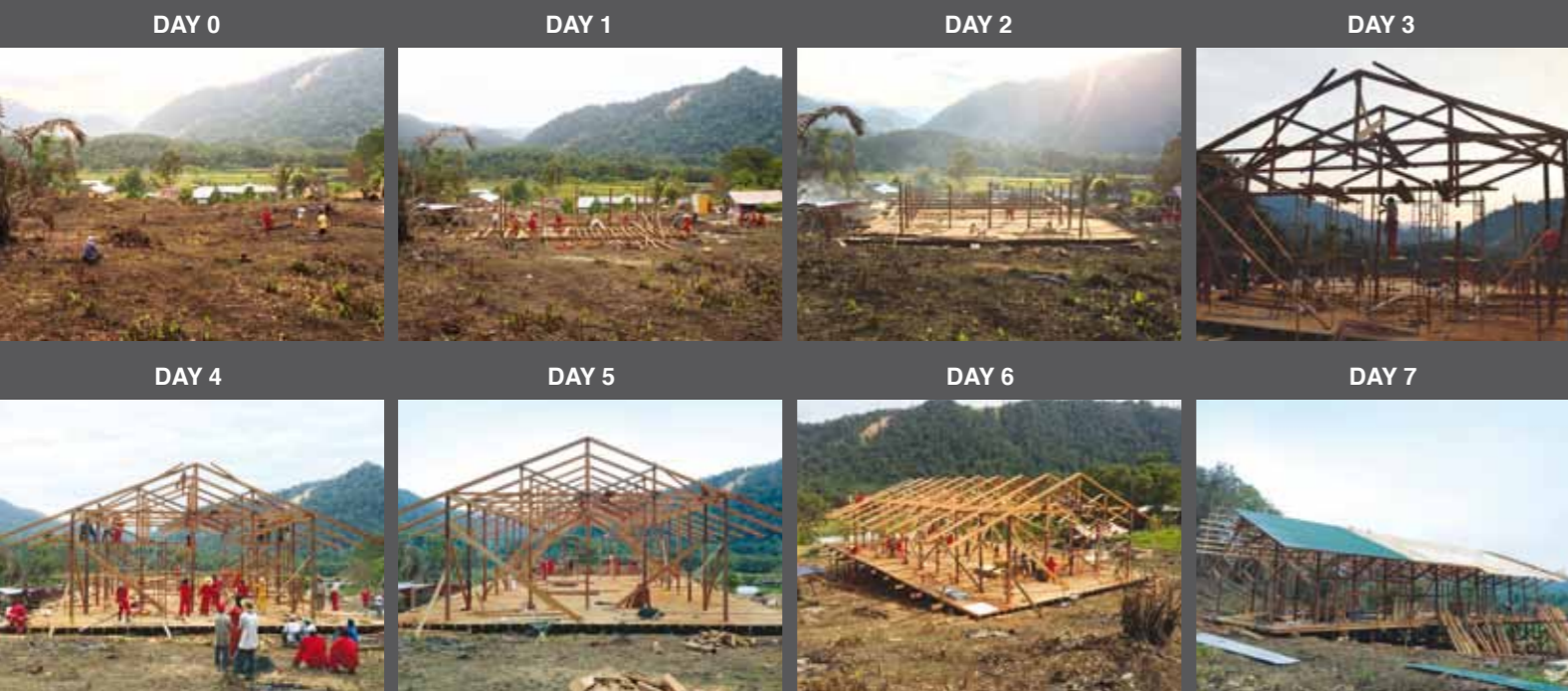
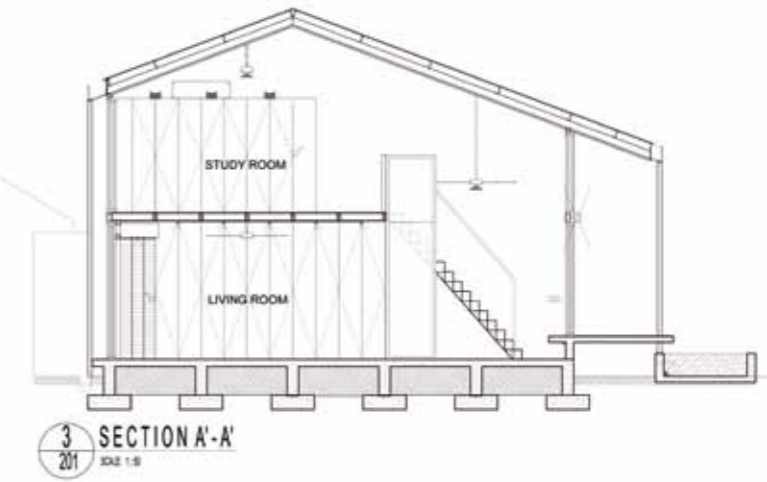
CAT HOUSE

by Jenny Chow, Lim Siew Yong & Michael Voon

Catherine wanted to extend her living room to allow more space for her two children and her work. We gave her stand-alone annex instead - for work and play, for sleep-overs and morning coffees, for fishes in a rainwater pool and kids to play in the shade.

The thin floor plan with a mezzanine and vaulted meant light and airy interiors with good climatic response, and its steel framed construction keeps it light on its feet. Innovative space planning and staircase design maximises storage and enabled the inclusion of a bathroom and toilet.

So while physiologically the pavilion alludes to the Malay kampong house, it reminds one of a Chinese saying - "麻雀虽小，五脏俱全" Small as it is, the sparrow has all the vital organs.



Food Gallery. Tun Jugah

by S.M.L. Architects

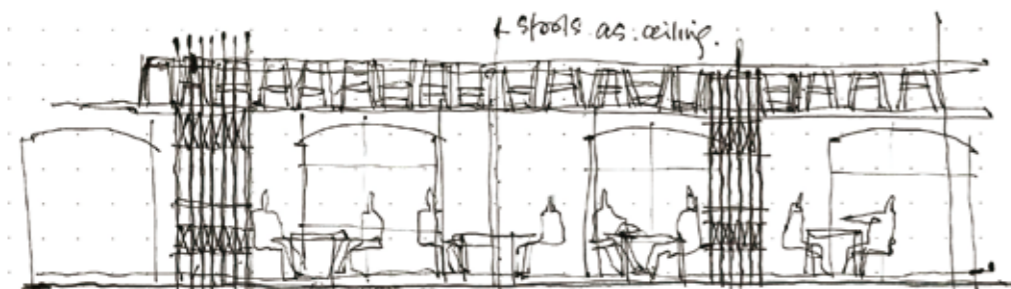
The TJFG was originally designed as the generic type of food court found in a shopping centre; one with something for everyone. In recent years, the clientele had changed; moving away from family groups towards young professionals wanting a conducive environment for a working lunch.

The client decided to re-vamp the image of their food court - aimed for a more contemporary feel and experience. The architects wanted to invoke the experience of eating street food; at the market, along the five foot way in the old part of town. Using the more intangible elements - the silhouette of the concertina grilles that allude to the Chinatown shop fronts while the incandescent light tubes are reminiscent of the market at night. Everyday coffee shop items are used in un-usual ways - plastic stools become the ceiling and screens for the dining rooms and enamel crockery from the 70's are used as part of signage and decor.

The furniture has been re-designed as well using simpler and cleaner lines. It has a back-to-basics feel that might remind some patrons of their school days; sitting on benches, sharing stories in "them days" when everything was "better" and the community was more closely knitted. Indeed, there are two oversized tables inviting patrons to share space and perhaps stories and friendship.

Perhaps this is more than a re-vamping or face-lift because it goes beyond the skin - it is more like a coming of age.

S.M.L. Architects is Arlene Chew and Leong Gian Wen, a new partnership working out of an 80-year old shophouse in Upper China Street, Kuching. They were formerly from Design Network Architects.



Elements of Delight



Amid the modular structure of the church - the architect found time to insert an element of frivolity; a timber screen at the gable-end, in the 'cracked ice' motif. Giving the builders a break from the systematic and orderly, to express their artistic side.

A steel mesh screen blurs the boundary between the new house and the existing, and helps in unifying the three generations under one roof.

A space saver stair built in folded interlocking steel plates - a steel angle provides the support for the handrail and acts as a valance for the stair lights.

The ubiquitous plastic stool is used in the construction of the ceiling - the red ones are lit, its wicker seat acting as the screen to its lantern.



DecoWood

Better than Timber



UCO DecoWood is a durable wood-like strip made of fibre cement. Autoclaved in high temperatures for toughness and stability, UCO DecoWood is environmental friendly, termite-proof and weather-resistant. It is ideal for both internal and external uses, and suitable for applications such as stair risers and treads, ceilings, feature walls, louvres, deckings and fencings. UCO DecoWood is recommended to be painted with Sissons™ Paints to achieve a long-lasting natural timber look-alike finish.



Level 10, Menara UAC, No. 12, Jalan PJU 7/5, Mutiara Damansara, 47800 Petaling Jaya, Selangor Darul Ehsan, Malaysia
Tel: +603-7721 9393 Fax: +603-7721 9300 Email:sales@uac.com.my





DML Products (Borneo) Sdn. Bhd.

Manufacturer of Metal Ceiling and Louvers



P A M AWARDS 2 0 1 5

UCTS (University College of Technology Sarawak)
(Silver Award – Educational Buildings Category)

The UCTS campus is designed to reflect the unique image of Sibul, founded on the banks of the Rejang River and its relationship with the timber industry. The design team envisaged a giant forest canopy under which education, recreation and community can take place – it was also designed to be rated under the “Green Building Index” (GBI). The key design elements include:

- i. Integrated photovoltaic panel which will generate 70kW of electricity per day;
- ii. Advanced building envelope to minimize heat gain including specialty low-emissive glass and insulated roofs;
- iii. Variable speed drive chilled with VAV system for the air conditioning system;
- iv. Rainwater harvesting and water recycling system;
- v. Energy saving lifts;
- vi. Low Volatile Organic Compound (VOC) building products and finishes; and
- vii. Non-chemical water treatment system for condenser or chilled water circuit.

PAMSC would like to congratulate **AKIMEDIA** for their current success at the PAM Awards; garnering a **SILVER Award** for their UCTS campus in the Educational Buildings Category while their Kuching Sentral was shortlisted in the Public and Institutional Buildings Category. Well Done !



Strip Ceiling



Strip Fascade



Sun Louvres



Ventilation Louvres



Box Louvres



Aerofoil



Aeropoint



Tile Ceiling



Kuching Sentral

(Shortlisted – Public and Institutional Buildings Category)

This building was designed for two main activities; long distance bus transportation and shopping complex at a strategic corner site about 12 KM from Kuching City.

Architecturally, the building was conceived as a large over-sailing roof that offers shelter and community in its shade. Clad in aluminium panelling and glass in staggered and oblique configurations; it is a modern departure from the old terminal which was no more than a collection of steel sheds.



DML PRODUCTS (BORNEO) SDN BHD (742099-D)

(Manufacturer of Metal Ceiling and Louvers)

138 Block 15, MTLD, Jln Kuching Ranger Depot, Sg Tapang off BT 7, 93250 Kuching, Sarawak. Email: service@dml.com.my Website: www.dml.com.my

Tel (Office): 082-613099 Mobile: +6016-8890192 (Vivian Thian) / +6016-8890172 (Paddy Wong) Fax: 082-613105



BIM PART II

This second installment will provide you with tips on how to start implementing BIM in your office. Every practice is different, so bear in mind that you will need to make adjustments so it can work within your capacity.

THE TOOL

There are plenty of BIM-capable software in the market for you to choose from. Set a timeframe for your team to decide on the best option and then make a commitment for training. Navigating through any new software may become frustrating at times. Remember to always be in control the software, otherwise you will find that it will limit you in your tasks.

THE PILOT TEAM

You will require manpower with;

Architectural knowledge

- Utilizes BIM tools to build a model and produce documentation for the project
- Actively coordinates with other disciplines
- Appoint a Model Manager who will be responsible to do scheduled maintenance tasks, should you have more than one person working on the central model
- Setting up a filing system on the server for architectural data storage (i.e.: library, backup models, link files)

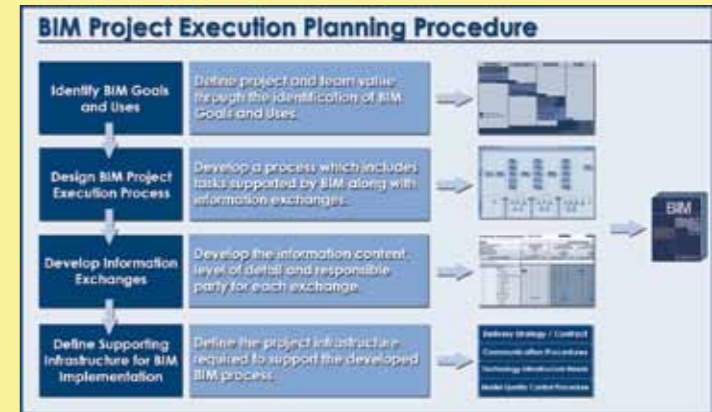
Management knowledge

- Records new work processes that will become a standard in the office for future projects
- Knowledgeable in BIM software capabilities and its requirements
- Allow for upgrading of office equipment to suit software requirements
- Setting up a filing system on the server for administrative data storage (i.e. : Gantt chart, drawing transmittals)

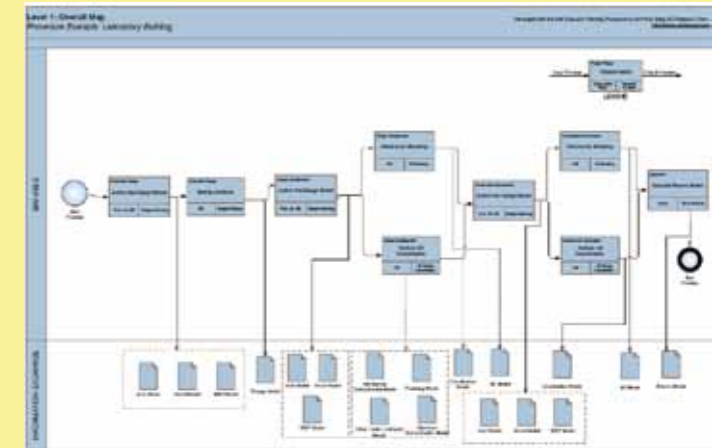
IT knowledge

- Setting up your server so your model can be accessed by clients and other collaborators

Your team can be as large of as small as you see fit for your chosen project. It is also perfectly fine to have one person carrying multiple roles, or to outsource certain services such as IT setup.



The BIM Project Execution Planning Procedure. (Pg 1, from BIM Project Execution Planning Guide Version 2.0)



BIM Overview Map for the Laboratory Project (Pg 19, from BIM Project Execution Planning Guide Version 2.0)

THE PILOT PROJECT

For your pilot project, you can opt to;

- recreate an existing project,
- build a fictional project, or
- build a new live project for a client

Before you start on your project, map out the goals that you want to achieve and draft your execution plan. The Pennsylvania State University CIC Research Program has developed a **BIM Execution Planning Guide** which is available for download from their website. Utilize this guide to create your own plan, however, keep it simple for the pilot. You can always revisit and make amendments as you go along.



Reference: **BIM Project Execution Planning Guide Version 2.0** Released - July 2010



BIM talk by Nora Khalid

On the 5th of September, Cik Nora Khalid gave a talk about BIM, during which she shared her experience practicing BIM in Perth, and explained the basic theory of BIM and how it works in practice. The Q&A session after the talk was very fruitful, as many of the 59 participants were not only architects, but from other related fields as well.

Learn to differentiate between what you need for now and what can wait for later. The essence of BIM practices comes down to the quality of information that you create within your model and how you communicate it across other disciplines.

50 YEARS
OF BUILDING ASIAN ICONS



www.lysaght.com.my



NS BLUESCOPE LYSAGHT MALAYSIA SDN BHD
NO. 6, PUSAT PERKAWASAN PERMUKAAN, SEKUNDER 11,
JALAN TANJUNG AWANG, LEBUH BUKIT KECIL,
11800 BANGSAL MEDICAL PARK, PERANG, MALAYSIA
TEL: 603-5033 6000
FAX: 603-5033 6001

NORTHERN
1-2-0, KAWASAN PONTON COMPOSITE, PAVIL,
JALAN TANJUNG AWANG, LEBUH BUKIT KECIL, A
11800 BANGSAL MEDICAL PARK, PERANG, MALAYSIA
TEL: 603-5033 6003 / 6002
FAX: 603-5033 6003

SOUTHERN
230, JALAN MELUR 11,
KAWASAN PERKAWASAN ASIRIA,
81450 BANGSAL MEDICAL PARK, MALAYSIA
TEL: 607-536 7600
FAX: 607-536 7601

NS BLUESCOPE LYSAGHT SABAH SDN BHD
LOT 1000 KULIMA OFF JALAN KULIMARONG,
88000 KOTA KINABALU,
SABAH, MALAYSIA
TEL: 6088-442 1101
FAX: 6088-421 1101

NS BLUESCOPE LYSAGHT (SARAWAK) SDN BHD
KAWASAN PERKAWASAN
LOT 8110, SECTOR 16,
PERANG INDUSTRIAL AREA,
JALAN MEDICAL PARK KUCHING
SARAWAK, MALAYSIA
TEL: 6082-323 822
FAX: 6082-323 4181

BRITISH BRANCH
LOT 874, BLOCK 26-K12,
KUALUMPUR LIGHT INDUSTRIAL ESTATE,
07700 SUTERA U SARAWAK, MALAYSIA
TEL: 6082-251 226
FAX: 6082-252 881

Events Sub-committee

Dialogue with PAM President and Council Members

On the 5th of September 2015, PAMSC committee members held a dialogue with PAM President; Ar. Mohd Zulhemlee An, Deputy President; Ar. Lillian Tay, Hon. Secretary; Ar. Sarizal Yusman Yusoff, Hon. Treasurer; Ar. Thirilogachandran a/l Shanmugasundaram and Immediate Past President; Ar. Chan Seong Aun.

The following issues were discussed and clarified:

1. ACAM (Association for Consulting Architect Malaysia) and what is PAM's stand

ACAM was registered with ROS Selangor on 18/6/2015 by few previous council members to focus on architectural practices. They have approximately 100 members, including some from other disciplines. (engineers, etc). PAM has written to LAM, and consulted the Registrar of Companies. The President has also written to members asking them to remain united under PAM.

2. Liberalisation of Professional Services

Amendment of Architect's Act which allows a 30% equity in architectural firms by non-architects has been approved by the Cabinet on 1/6/2015 but yet to be implemented. A Joint LAM-PAM Committee is working on finalising the Rules.

With the passing of this amendment, the PAM President urged members to upgrade their services to face the challenge and re-think of roles in order to stay relevant in the future. PAM is working on programmes to promote local architects – through documentaries, publications and the web.

3. CPD Events

PAMSC sought clarification on the list of confirmed CPD events and highlighted that only one of the four scheduled CPD lectures for PAMSC has taken place. PAM to look into this matter urgently. PAM agrees with PAMSC's recommendation that PAM student members should attend CPD lectures for free while student non-members shall be charged RM 10.

PAM will follow up with PAM Secretariat's concern that membership takes up to 6 months to process and for numbers to be issued.

4. New PAM Centre (Jalan Tanduk)

PAM briefed the progress of the 'Tanduk', which is about 30% completed and scheduled for opening on May 2016. PAM is short of RM 4 million and looking into means to raise funds for the shortfall. PAM intends to put up a link on PAM website to report on monthly progress of the 'Tanduk'.



5. PAM Strategic Planning

PAM has 4 Strategic Planning Programmes aimed at charting the future direction of PAM. They are:

Programme 1 - Architecture as a National Resource
Relationship with Policy Makers, Economic Value of Architecture, Education & Professional Development led by Ar Mohd Zulhemlee An

Programme 2 - Architecture - today and tomorrow
City of the Future, Sustainable Architecture, Quality of Life led by Ar. Mustapha Kamal bin Zulkarnain

Programme 3 - Architectural Practice of the Future
Today's challenges, Architectural Practice of the Future, Branding Architecture, Public perception of the value of architecture to Malaysia and Malaysians led by Ar. Lillian Tay

Programme 4 - Role and Management of PAM
Role and Management of PAM Council, The Role & Management of PAM Secretariat, PAM Communications Programme, What do we want to communicate? led by Ar. Hj. Saifuddin Ahmad

6. OTHER MATTERS

The PAM President informs that PAMSC representation at LAM is confirmed.

PAM informed that in order to encourage the participation of the Graduate Members, there will be 2 representatives in future council meetings.

PAM also informed that there will be a new list of recognized schools published in LAM website, this will be enforced starting Jan 2017.



Chairman's Night

On the evening of the same day, our Chapter Chairman graciously hosted a dinner at his house for the PAM President and office bearers, together with the PAMSC committee members, past Chairmen and friends.

The casual ambience allowed the guests to interact on a more social level, one of the highlights of the evening was a series of short talks, slide shows and videos about PAMSC events and the recent Hangzhou study trip. Another highlight was the handing over of the funds for the PAMSC Centre renovation and WAD celebrations 2015 by the PAM President.

Heritage & Sustainable Design

The Architecture of Sarawak before 1963' - Dr John Ting

On 25th July 2015, Dr. John Ting's talk was jointly organised by PAMSC and Sarawak Heritage Society. It enjoyed a full house in attendance and offered a preview to John's book, which traced:

1. the development of Sarawak's architecture up to 1963,
2. and the different approaches adopted by the three Rajahs and the British administration after World War 2.

John's research will be one of the first to lay the foundation for further studies on specific areas of Sarawakian architecture. He started his lecture with an introduction to Sarawak's indigenous architecture, describing how Iban longhouses varied according to socio-cultural differences. Following that, John dispelled the oft-held belief that hip roofed-verandas are a common feature of Malay houses, he contends that this feature was adopted into Malay architecture following an influence by the Brooks' official buildings.

John's book will be the result of ongoing research from the last five years, and is targeted to be published by 2016.



The Heritage Sub-committee and the Sarawak Heritage Society recently organised two joint visits - to the Hokkien School in Kuching and the Charles Brooke Memorial Hospital. Both events were well attended and guided by local historians and heritage experts.

For more information about these and up-coming events, please visit our website.

Report by
Conservation Sub-committee Chairman
Ar. Mike Boon

Education & Graduate Sub-Committee

LAM Part III Professional Exam

On the 11th of July, PAM President Ar. Mohd Zulhemlee and Ar. Wan Sofiah gave graduates a helping hand before the written exams. 25 graduates attended the full-day course, which were conducted in three sessions: Professional Architect's Roles and Responsibilities, the Architectural Practice and Contract Administration followed by Reviewing Examination Papers 2014 and a Q & A session.

Ar. Wan Sofiah offered a useful tip for answering exam questions - first identify the issue, then identify the relevant documents, identify your solution to the problem and then make a firm decision.

19 graduates sat for the written paper on 1st August 2015, we wish them all the very best.

Report by
Education Sub-committee
Ms. Nora Khalid



Practice & Government Liason Sub-Committee

(A). Reviewing of Sarawak Building Ordinance (SBO)

- (i) The 5 Practice committee members - Ar. Philip Chan, Ar. Peter Wong, Ar. Stephen Liew, Ar. Bong Joon Hin and Ar. Chai Si Yong have reviewed the SBO over several meetings and have finalized the draft.
- (ii) The fighting safety section will be reviewed and finalized together with BOMBA, after which the final draft will be submitted to the Ministry of Local Government.



Planning Issues

(B). Planning Issues

The Lands and Survey Department has released the Guidelines and Simplified Application Process for Extension of Landed Residential Buildings. PAM members have raised several issues on the attic roof and percentage of balcony coverage and made suggestions during the review dialogue on the 8th of July 2015, held at MBKS.

(C). BOMBA Dialogue

Several members of the Practice committee participated in dialogue with BOMBA on the 14th of July 2015, during which several issues were brought up and finalized in the following manner:

- (i) T beams are not longer allowed to replace the 230mm party wall protrusions.
- (ii) Party walls between shophouses units of the same owner / tenant may be omitted during OP application provided the overall areas do not incur other Bomba requirements.
- (iii) The podium slab above basements / sub-basements are permitted provided it is 4 hours rated.
- (iv) Materials other than redbrick may be used for party wall / compartment wall provided it achieves the prescribed fire rating and must be approved by BOMBA.



Bomba Dialogue

(D). Review of Development Control Standard and Policies

State Planning Authority has conducted an exclusive workshop with Lands and Survey Dept and the Planning Unit to review of D.C.S. and Policies. Some of the issues discussed include building set-backs, road reserves, density and zoning, policies for affordable housing, reclassification of NAL to MZL policies, urban transportation, buildings for temporary use, etc.

PAMSC has requested for the draft for review in order to make constructive suggestions.



Review of Development Control Standard and Policies

(E). Stakeholders' Engagement Session on State Housing Development

On the 11th of September 2015, the Ministry of Housing held a workshop on stakeholders' engagement to discuss four major issues:

1. Policies
2. Design, Procurement and Construction
3. Supply, Demand and Affordability
4. Finance, Squatters, Riverbank Settlements

The Practice Sub-Committee will compile and forward our views and suggestions to the UiTM consultant who was preparing the project paper for the Ministry.



Stakeholders' Engagement Session on State Housing Development

Special Word of Thanks

In the last three months, our Sub-committee has worked very hard to actively participated in the reviewing of Bye-Law and Policies, I would like to express my thanks to my team members and would like to invite interested members to join us in this worthwhile exercises.

"Contributing to Architecture in Sarawak"



Hide Away @ Sunny Hill

We specialize in a variety of residential and commercial glazing systems –
 • INFINI • EUROGROOVE • SOLIDE • BI-FOLD & Laminated Glass

Seng Lee Glass Sdn. Bhd. 成利玻璃有限公司

Lot 9575 Jalan Pending 93450 Kuching Sarawak (387670-J)

T:082-337733 F:082-332255 E: info@sengleeglass.com W: www.sengleeglass.com

DOLPHIN_{TJP}

HELENA
2112

ANDES
2028



www.dolphinsanitaryware.com.my | www.i-home.com.my

T.J. Pottery Sdn. Bhd. (176202-U)

I-HOME MARKETING SDN.BHD. (497273-A)

Tel | +605- 201 4525 (H/L) +605- 201 1993
 Fax | +605- 201 4503
 E-Mail | info@dolphinsanitaryware.com.my

Add | No.30, 1st Floor, Lot 7050, Jalan Sekama,
 93300 Kuching, Sarawak.
 Tel & Fax | +608- 234 5525
 E-Mail | allisonkjlil@gmail.com



HQ :
Carpet Ideas Marketing Sdn. Bhd (Co.No. 1057656-U)
 28, Jalan 8/62A, Bandar Menjalara, Kepong, 52200, Kuala Lumpur, Malaysia.
 Tel No : +603 - 6277 4280
 Fax No : +603 - 6277 4281
 Website : www.carpetideas.com.my
 Email : info@cideas.com.my

KUCHING OFFICE :
SYARIKAT GLOBALNIAGA
 Lot 1618, Sublot 10, Lorong 6A, Jalan Setia Raja,
 Travillion @ Muara Tabuan, Phase 2, 93350, Kuching, Sarawak, Malaysia
 Tel No : +6082 - 333 929
 Fax No : +6082 - 336 929
 Website : www.globalniaga.net
 Email : info@globalniaga.net



flortrend



HQ :
Flor Trend Sdn Bhd
 1-7, Plaza Menjalara,
 No.1, Jalan Menjalara Idaman,
 Bandar Menjalara, Kepong,
 52200 Kuala Lumpur.
 Tel No : 03 - 6276 2881
 Fax No : 03 - 6274 2882
 Email : info@flortrend.com.my

KUCHING OFFICE :
SYARIKAT GLOBALNIAGA
 Lot 1618, Sublot 10,
 Lorong 6A, Jalan Setia Raja,
 Travillion @ Muara Tabuan, Phase 2,
 93350, Kuching,
 Sarawak Malaysia

Email : info@globalniaga.net
 Website : www.globalniaga.net
 Tel : 082 - 333 929
 Fax : 082 - 336 929

allure LOCKING



The Latest
 Flooring Innovation
 From **allure**

Featuring Simple Easy
 Clic System Installation



SYARIKAT GLOBALNIAGA

Lot 1618, Sublot 10,
 Lorong 6A, Jalan Setia Raja,
 Travillion @ Muara Tabuan, Phase 2,
 93350, Kuching,
 Sarawak, Malaysia.

Email : info@globalniaga.net
 Website : www.globalniaga.net
 Tel : 082 - 333 929
 Fax : 082 - 336 929

RESILIENT FLOORING

...has never been this easy to install.
 ...has never been looked this realistic.

FEATURES

- DIY, no glue, no underlay.
- Lay directly over your old floor.
- Looks and feels like real wood.
- Super durable and completely waterproof.
- Free from termite.
- Warm comfort and quite under foot.
- Suitable for Commercial and Residential.
- Scratch resistant.

SINAR WANG
 BE DIFFERENT

THE EXOTIC 3D DECORATIVE WALL PANEL SUPPLIER.

We can custom make architectural decorative wall panels under the
LUXE DESIGN ON PVC BOARD (suitable for both indoors and outdoors)
 Or **TOSCAN DESIGN PANEL** (on MDF suitable for indoors)



We have the technology to give you the freedom to express yourself via either engraving or cut through on PVC or MDF boards to the designs of your making.

Endless design options for partition & decorative screens, decorative doors, decorative wall panels, company sign board, advertising panels, light box, products' labels, baluster, ceiling decoration for hotels, shop fronts, entertainment places, residential and commercial spaces and any place you can think of !
 (*pictures shown are for reference only)



SINAR WANG PRODUCTS & SERVICES (SARAWAK) SDN. BHD.

No. 630, Blk 11, Lot 762, Mtld, Phase 1, Tabuan Jaya Shophouse, Lorong 2B1, Jalan Urat Mata, 93350 Kuching, Sarawak.
H/P : 0128866567 / 0138998568 / 0138338929 / 0138628929 **TEL** : 082366969 / 082366328 / 082366767
Fax : 082366969 **Website** : www.sinarwang.com **Email** : dorina@sinarwang.com / bong@sinarwang.com

WE LOOK FORWARD TO BE OF SERVICE TO YOU !

.....TO MAKE YOUR IDEAS INTO A REALITY!

PAMSC-LKW 24 Hour Design Workshop

On the 24th of July 2015, PAMSC conducted a 24-hour design workshop at LimKokWing Institute of Creative Technology. The brief called for the design of a cultural pavilion for a key figure in Sarawakian culture and history and the polymath, Tom Harrisson was chosen as the candidate. The event was supported by United G.I. Products Sdn. Bhd. who provided the participants with a specially designed tee, and Louise Macul, museum specialist who gave a lecture on Tom Harrisson.

24.7.2015

8:00 a.m.
BRIEFING



24.7.2015

8:00 a.m.
WORKSHOP
COMMENCES

12 noon
FIRST REVIEW

3:00 p.m.
SECOND REVIEW

8:00 p.m.
FINAL REVIEW

25.7.2015

9:00 a.m.
PRESENTATION
AND INTERVIEW

Who was Tom Harrisson?

In her book, 'The Most Offending Soul Alive - Tom Harrisson and his Remarkable Life', Judith Heimman describes him:

"An English eccentric and adventurer, Tom Harrisson (1911-1976) sought knowledge and renown in a dizzying number of fields, while breaking most of the rules of civilized society. He was a precursor in the field of modern market research; he won the DSO for his World War II service in Borneo; he led efforts to save the orangutan, the green sea turtle, and other endangered species; he discovered the oldest modern human skull known at the time."

His contributions to the Sarawak Museum made it into "an institution of world standing" although it seems that this charismatic figure who offended as many people as he impressed at the twilight of colonialism on the fringes of the British empire.

Why Tom Harrisson?

We selected this British polymath as the key figure for the design of the cultural pavilion because he had many similarities with good architects, and qualities that architecture students should have. He was knowledgeable and curious about many things and unafraid to strive for them. Much like how good architects would balance art with structure, grapple with human behavior and culture, material with services, and so forth. He was passionate about his work, and had the courage to speak his mind and to stand for what he believed in. He also believed in the education of the people whom he worked with (or worked for him).

This is the character and the contribution of the 'man', and therein lies our lesson to the students; be curious and learn about everything, be brave, make mistakes and learn, above all, leave your mark in the community.



The 43 participants were from 7 different universities, colleges and levels of training – assembled into groups of 4-5 in a 'vertical' studio.



The participants were given ten minutes to present their scheme followed by queries from the jury panel.

25.7.2015

12:30 p.m.
JUDGING AND
ANNOUNCEMENT
OF WINNER



The workshop was led by (R to L) Chai Si Yong, Louise Macul, Wee Hii Min, Felix Wee, Nora Khalid, Leong Pik Shia and Sia Peh Swee.

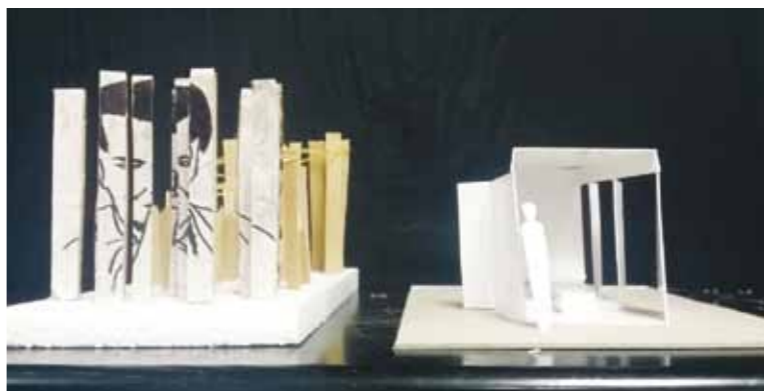


The winning team receiving their award from Ar. Felix Wee – Yeo Kai Wen, Ahmad Sahfique, Siti Khadijah and Lai Shie Wen.

25.7.2015

1:00 p.m.

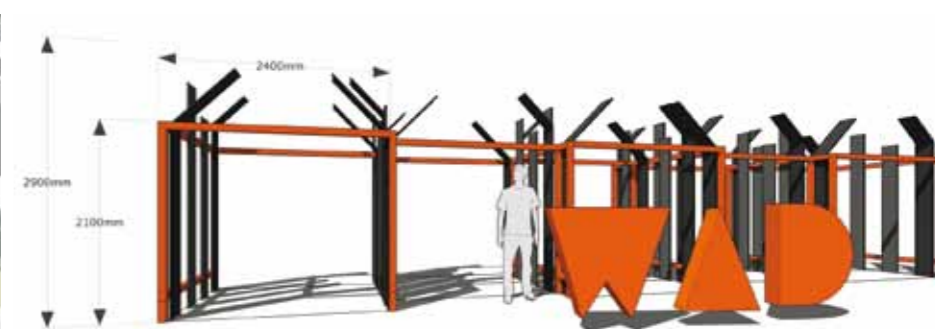
WINNER
'Shattered Perspectives'
– will be built as part of the PAMSC World Architecture Day 2015 celebrations



Some of the schemes put forward by the participants.



Workshop partners were UGI(tee shirts) and LKW (venue and AV equipment), our thanks to the workshop leaders and Guest of Honor, Ms. Louise Maccul with excellent press coverage undertaken by the PAMSC Chairman; Ar. Mike Boon.



WAD 5.0

This year, PAMSC is participating for the fifth time in the celebration of World Architecture Day 2015. We are working together with Plaza Merdeka & Amcan to put up an urban installation at Padang Merdeka, Kuching. PAMSC is calling student volunteers to participate in the installation works. The WAD event is scheduled as follows:

Installation work - 28 Sept 2015 – 4 Oct 2015
Official launching & Exhibition start - 5 Oct 2015
Exhibition ends - 2 Nov 2015

More info: www.pamsc.org.my or Facebook Group: **PAMSC WAD**



Interprofessional Games

Designerscollection
2015



Once again, it is time for the Interprofessional Games, organised through the UPC (Ultimate Professional Centre) - during which professionals from various disciplines throughout the State meet to play sports and network with each other.

However, certain profession(al) groups have taken these 'games' more seriously than the rest of us, which puts the original objective of these 'games' in doubt. But the PAMSC members were able to take the high road and enjoy ourselves thoroughly - both during training sessions and actual competitions. The architects seem to have so much fun during the training sessions that it raises the question of whether PAMSC should have our own games and family day - bowling, swimming, volleyball and futsal can easily lend themselves to such an event.

And...after two weeks of 'fierce' competition, the architects came third in overall placings; the best result for PAMSC for quite some years. For that, we would like to record our appreciation to our sportsmen and sportswomen, with special thanks to Kevin Phua, Tay Buang Chuan, Henry Chuo, Phillip Chang, Bong Joon Hin, Kho Meng K'ang and Ricky Hong for taking the lead and doing us proud.



INTERPROFESSIONAL GAMES 2015 SCORE SHEET

TEAM \ GAME	ACCOUNTANTS	AGRICULTURAL SCIENTISTS/ VETRINARY/ CHEMIST	ARCHITECTS	DOCTORS	ENGINEERS	LAWYERS	PHARMACISTS / TOWN PLANNERS	SURVEYORS RISM
	MIA	SIAS	PAM	MMA	IEM	AAS	SPS / MIP	
FUTSAL	6		8		7	9		
DARTS	Not Counted	7	7			9	8	7
BOWLING	8	4	7	6	5	9	2	3
BADMINTON	8	5	4	6	9	4	8	7
GOLF		5	Not included due to technicality		9	7		6
POINTS SCORED	22	21	26	12	30	38	18	23
PLACING	5	6	3	8	2	1	7	4



Anna Wong 012-8088113

Melissa Chong 012-8869811

We thank our sponsors for this Games - Nippon Paint Malaysia, Amcan Color Coating Industries Sdn. Bhd, ICI Paints (M) Sdn. Bhd. and Harrison's Trading Sdn. Bhd.

Recognition and Relevance

As part of the Liberalisation of Professional Services, the Architects Act 1967 has been amended so that non architects may own up to 30% equity in architectural practices. Non architects mean just that - a group not limited to our colleagues in the building industry such as the engineers and surveyors, but everyone - developers, politicians, businessmen and graduate architects as well. This Act has taken effect after it was gazetted on 1st of June 2015.

The fact that PAM does not agree with these amendments means little. Our President has raised the matter with LAM and the Minister of Works, who clarified that the amendments have been passed and cannot be revoked. PAM will address the matter administratively by making amendments to the Architects Rules, and to that end, a Joint LAM-PAM Committee has been set up to draft the Rules.

But one hears the fading sound of hoof beats as the barn door is slammed shut.

To be positive, one would imagine that the Liberalisation of our profession can be viewed as a healthy move:

1. More foreign competition means that local architects will have beef up their services to get commissions; resulting in better quality of architecture.
2. Foreign firms bring in specialist knowledge; collaborating with them improves our own skill-set.

However, these situations apply usually to larger and specialised projects; universities, hospitals, airports, and not to medium sized projects such as housing and schools, for example. Not all 'imported' architects are of the same calibre; it would be interesting to see how PAM is able to differentiate the masterful from the mediocre using the amended Architect Rules. One hopes that it works, because we have our fair share of mediocre architects already, we do not need imported ones.

In a recent dialogue between PAMSC and PAM President, the key problems facing our professional development and architectural education were highlighted though not discussed in detail. They are summarised here: *my comments are shown in italics*

1. **The declining quality of professional service** - *many new graduates are opting to work overseas; those from overseas universities are staying on to work, while many local graduates leave to work in Singapore and Australia. This makes it difficult for local practices to groom their second tier; to inject fresh ideas, help with work load and continuity. It is little wonder why the quality of service deteriorates.*

2. **Low Passing Rate for PAM-LAM Part 3 Exam of between 6-20%** - *there should be a review of this system of examining the candidates. Perhaps longer time for each exam paper or shorter papers over more sessions. It should not be a test of speed, because that is not what happens in practice. In Singapore, there is an option for candidates to submit a report detailing 5 years of relevant work. We are all cut from different cloth, and there are many forms of practice - there should be more than one way to evaluate the candidates.*
3. **Quality of graduates not meeting industry expectations** - *there are some architecture colleges that use 40% as a passing mark. When benchmarks are lowered this way, it is little wonder that quality of graduates is poor. In Tong Hai University in Taiwan, the prerequisite mark to progress to the next semester is 60. But let's not put the burden on the schools only, practitioners can get involved in school curriculum - as external examiners or by offering internship and training.*
4. **Architecture is not a popular career choice amongst secondary students** - *this point comes as a surprise to me, because I understand from my colleagues in academia that intake is still very good. "...why we have two intakes each year!..."*

It is quite clear that the above issues are inter-related, so one wonders if this next issue discussed at the dialogue is related as well.

From January 2017, LAM will revoke the automatic recognition of overseas architecture programmes. This means that only degrees from local architecture schools will be recognised. Architecture schools can apply for their programmes to be accredited, whereupon LAM will send representatives to that university to 'validate' the accreditation. We were told that the applying university will bear the cost of this process.

The new Manual of Accreditation for Architecture Programme is available from LAM, but one wonders what the logic for this decision is? Does LAM think that foreign graduates are lowering the quality of our services? If so, surely LAM can continue to vet and interview them for their eligibility to sit for the Part 3 exams. Is it not simpler to recognise the list of accredited schools in the countries where LAM-PAM has reciprocal relationships?

In any case, all this may amount to nothing.

We all know that the quality of graduate architects are largely assessed based on the strength of their school portfolio and not the school's degree. So, graduates from non-recognised schools (some of whom are there on government scholarship) will continue to get work where ever they choose. And by not recognizing their qualifications, LAM-PAM simply makes itself less relevant to their graduates. With so many hurdles to surmount in order to be registered, it might well be easier for them to buy a 30% stake-hold in an architectural practice.



MBKS School Garden and Landscape Competition 2015

On the 10 -11th August, PAMSC was invited by the Majlis Bandaraya Kuching Selatan (MBKS) to be part of the judging panel for their School Garden and Landscape Competition 2015. Annie Narodden and KS Tan participated in the event which was divided into 2 categories: Primary (13 schools) and Secondary Schools (7 schools) within MBKS area. The winners were:
 - SJK Chung Hua No.5 (Primary School)
 - SMK Batu Lintang. (Secondary School)

Other panels are from Institute of Landscape Architects Malaysia, Institut Pertanian Sarawak and UNIMAS.



Earlier this year, Lee Kao Choo (KC) joined Melinda Leong as Admin. Executive at the PAM Centre. She has an exceptionally long commute to work from Batu 31, but will be moving closer to Kuching later this year.



PAMSC members visited Nora during Raya and sampled her mother's wonderful cooking...



...which traveled to Datum KL when Nora and Noraini (R) presented PAM President, Ar. Zulhemlee with mom's Kek Lapis in appreciation for his lecture on PAM-LAM Part 3 exams in Kuching.

Announcement of Engagement between Dilsyadry bin Hanri "Dee" and Nurfizani bt Hazimi on the 20th of February, 2015.

Dee obtained his architectural degree from Universiti Teknologi Malaysia. Before that, he studied at SMT Sejingkat, where he met Nurfizani, "his best friend". She presently works at Cawangan Farmasi Logistik Negeri. They plan to get married later this year, after which Dee will return from JB to work and reside in Kuching.

ARCHITECTS ON THE RUN



Recently, local architects have been participating in the various running events in Kuching such as the Kuching Marathon and the SSPCA Animalizing Run. PAMSC had planned for the architects to run with ears to raise money for the charity, but the event was postponed due to haze. Undeterred, some of the participants put on ears and met for breakfast with the President of the SSPCA, Ms. Dona Drury-Wee.



CPD Lecture by Dr. Ar. Tan Loke Mun - "A Better Tomorrow - The Future of Cities"

On the 19th of Sept 2015, A. & H. Meyer sponsored a 3-hour lecture by Dr. Tan Loke Mun who discussed the future of cities in consideration with population growth, sustainability and sufficiency. The weighty topic was supported by an extensive slideshow that was compiled and composed over the past 5 years.

END

Publisher: **PAMSC Publication and Information Committee**

Designer: **Aleph Tav Enterprise** ⁽⁹²²⁵⁰⁾

H/P: (HJ Chen) +6017 850 3683 (Lee) +6012 895 1334 Email: alephtavart@gmail.com

Printer: **WISMA PRINTING SDN BHD**

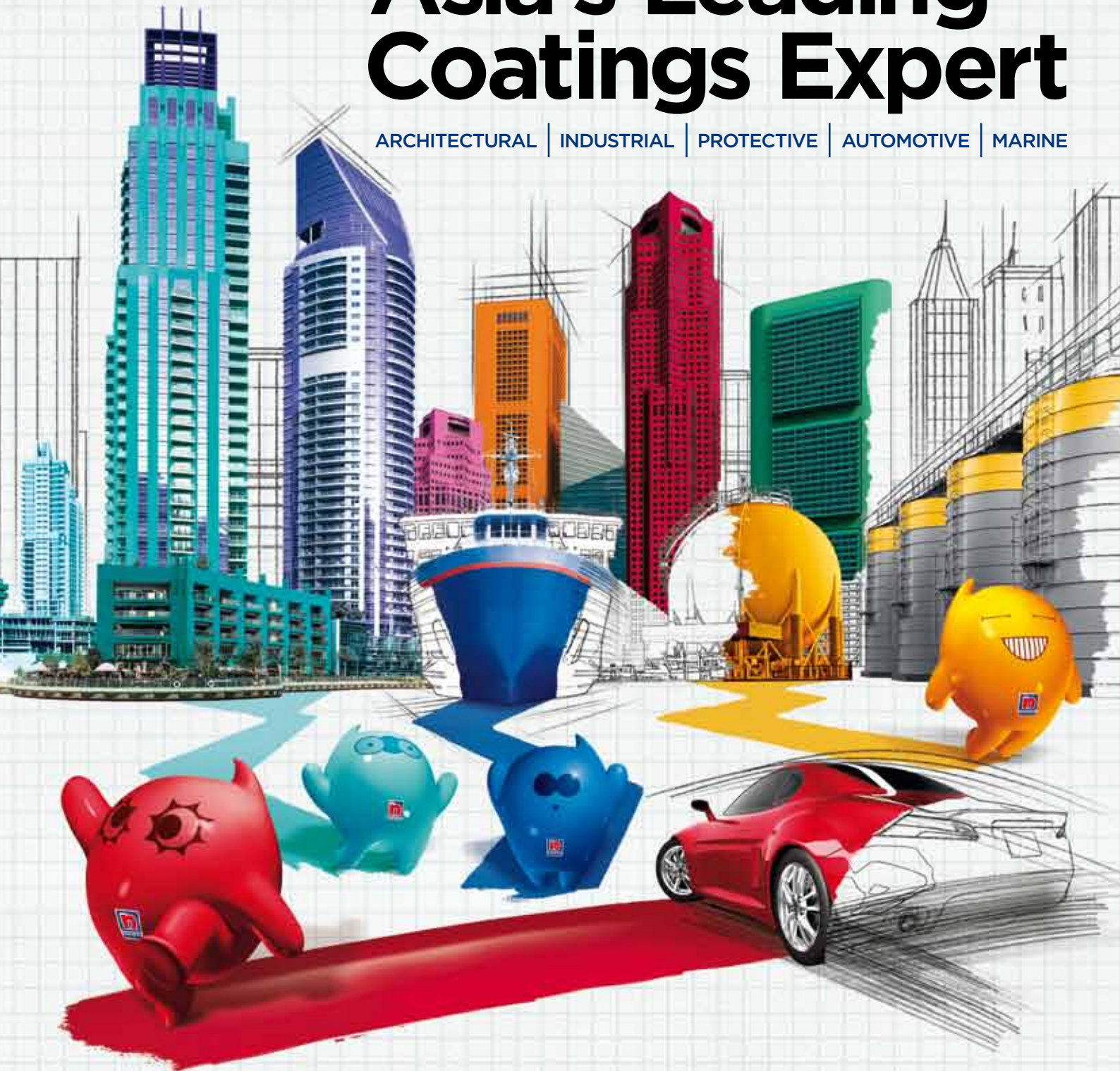
No. 1949, 1st Floor, Jalan Tekad, Pending Industrial Estate, 93450 Kuching, Sarawak. Tel: 082 338 131 Fax: 082 333 002 wismaprinting@yahoo.com

#PaintAllSurfaces

with

Asia's Leading Coatings Expert

ARCHITECTURAL | INDUSTRIAL | PROTECTIVE | AUTOMOTIVE | MARINE



Scan me. It will make your day.



**THE
COATINGS
EXPERT™**

1-800-88-2663 www.nipponpaint.com.my