

INTERSECTION



*Designers for the mural:
Kong Yean Wei, Lily Ting, Lim Chiawen & Hii Wei Sheng*

2/2019-2020
PPK469/01/2017(034673)

PAM SARAWAK CHAPTER DEC 2019

Contributing to Architecture in Sarawak



We specialize in a variety of residential and commercial glazing systems

- INFINI
- SOLIDE
- EUROGROOVE
- BI-FOLD & Laminated Glass

Seng Lee Glass Sdn. Bhd.
成利玻璃有限公司

Lot 2005, Jalan Semaba, Batu 5, 93250
Kuching, Sarawak. (387670-T)

T:082-576969 F:082-579955

E: info@sengleeglass.com

W: www.sengleeglass.com



World Architectural Day in conjunction with WAK 2019 - Pg 4



The Tropical Malaysian House II - Pg 8



CSR : Making A Difference - Pg 10

IN MEMORIAM..... AR. HU HIONG MING



The late Ar. Hu with his family.

Nama Penerbit:

Pertubuhan Akitek Malaysia Sarawak Chapter

Lot 7915, 2nd Floor, Queen's Court, Jalan Wan Alwi, 93350 Kuching, Sarawak.

Tel: 082-457182

Fax: 082-451180

IVY'S MESSAGE

This issue of INTERSECTION coincides with the closing of 2019 amidst the growing festivities towards Christmas and the New Year.

2019 in the PAMSC family has seen many activities with our fellow architects stepping up to the plate for our chapter when occasion arises. As the year comes to a close, my gratitude goes out to all involved.

I would very much like to thank each and everyone of our readers for their participation in one way or another in PAMSC events.

PAMSC is what we all make of it and I hope that we can come together to shape our Institute, for us.

To our **sub-committees** and **secretariat**, who have worked tirelessly on PAMSC numerous endeavors and our **past chairmen** who have been the bedrock of support and guidance - 'kamsiah, to-to kamsiah'. (Thank you very much).

"Alone we can do so little, together we can do so much." - Helen Keller

It is a privilege that we are able to journey together in PAMSC to make that difference.

This is evident in our recent **WAD** in conjunction with **WAK**. And our **MAD** team headed by **Ar. Tay Buang Chuan** and **Ar. Felix Wee** painting the 'town red'. Kudos to all involved. The recent **Inter-professional games**, has drawn in many new and fresh faces thanks to **Ar. Sam Lau** and **Ricky Hong** and the respective captains. We hope all of you who were involved will stick around and enjoy the continuing fellowship representing PAMSC. A big 'THANK YOU' for such a good showing in the games. Do consider joining **Ar. Chai Si Yong** and team at Government Liaison and Practice front. It is a mammoth task and many hands will make light work. Please do put your hands up to join **Ar. Hajah Noraini Narodden** on mentoring the part 3 and graduates activities.

For consistency, our editor **Ar. Tina Lau** for INTERSECTION has been a breath of fresh air for the past issues. She deserves a wee break and in line with the holiday spirit, our December issue is a **TEAM** effort. The chickens have flown the coop Tina !!



This issue has been put together by our motley crew from various sub-committees in particular **Ar. Wee Hii Min**, reined into a cohesive manner by **Ms. Chen Hui Joo**. I will let their sharing speaks for themselves. And Oh my, we have been busy. Great job **Ar. Leong Pik Shia** @ CPD. Our teasers will give you a glimpse of what is in store for 2020.

To **Ar. John Lee**, who is holding fort for PAMSC as our representative at Ultimate Professional Centre; thank you! Congratulations to **Design Network Architects** and **IDC Architects** for making us proud with their recent awards.

We loss a fellow architect **Ar. Hu Hiong Ming** recently, our thoughts and prayers are with his wife Mdm. Chieng Yu Ing, Alvin, Emily and family.

The year has flown by so quickly, I find myself wondering if I should attempt (again) to fulfill my New Year resolutions for 2020 carried over from 2019 ! To those who have succeeded, my congratulations !

On behalf of PAMSC, wishing you and yours a Blessed Christmas to those celebrating Christmas, and a Happy and Blessed 2020 to one and all !

Ar. Ivy Jong

PAMSC Chairman 2019 - 2020

Our late Ar. Hu Hiong Ming was a man of few words but had a great passion for architecture. He was a humble man of great faith.

On the 14th November 2019, we lost a good friend, colleague and fellow architect after a brief period of illness.

During our younger days in Sibü, we were in the same Primary 5 class. He was gifted with amazing artistic skills and imagination. His distinctive art works will always remain in our memory.

Hiong Ming was our regular "coffee partner". He always shared with us the joys and challenges in our architecture. He encouraged us to press on with perseverance and overcome the challenges with integrity.

I will always treasure the time we had with him during our regular "coffee breaks." We are deeply saddened by his sudden passing, however we take comfort in the knowledge that he is in a better place where he will no longer suffer in pain and tears.

Rest in peace, Ar. Hu Hiong Ming.

By **Ar Moh Ung Tai**

PAMSC extends our heartfelt condolences to Mdm. Chieng Yu Ing, Alvin, Emily and family of the late Ar. Hu Hiong Ming.

My father was a soft spoken man, he let his actions speak for him.

He barely spoke to me about his work, again he let his work shine brightly in front of us; his children who did not share his passion for architecture. He in return did not share the sweat and tears behind this challenging career, and the difficult task of providing for our family. He not only accomplished this but beyond; testament to this is the number of his clients who came to pay their last respects. My sister and I could sense his disappointment when we told him that we wanted careers not related to his, but he did what a loving father would do; he provided. He provided the financial security and the emotional support to see us succeed in our studies.

My father is gone too soon, we miss him. Amongst the art and architecture that he left behind, we too are part of that enduring legacy.

*An excerpt from
Dr Alvin Hu Shan Loon's testimony*

CELEBRATING LOCAL ARCHITECTS

In conjunction with World Architecture Day (WAD) and What About Kuching (WAK), the Malaysian Institute of Architects Sarawak Chapter (PAMSC) was an exhibition that featured works of local architects from Sarawak. For the first time, we showcased the works of our local architects collectively in different sites across Kuching city to the general public.

Architecture plays an essential role in shaping human lives through the built environment. The architect is a person who observes human behaviours in their local context. Taking into consideration a broad spectrum of issues such as creating sustainable environments for the future and addressing a number of social problems, the architect's role in current times is challenging and complex; however it can be incredibly rewarding when the fruits of their labour has been realised. Themed Celebrating Local Architects – the aim of the exhibition was to highlight the works and efforts of our local architects to the general public, creating interest and exposure for our local architects and industry.

The exhibition ran from the 7th October until the 29th of October at various sites across the old Kuching town; The Old Courthouse, The Raneer Boutique Hotel, SML & MinWee Architect Office, Lima Tujoh Cafe, The Granary Kitchen & Bar, Singahsana Lodge and Location X Old Ting & Ting Supermarket. We had a small launch held on the 12th October 2019, where we had a walking tour of all of the sites that ended at Location X where we had nibbles and drinks.

On behalf of the committee, we would like to thank everyone involved - our student volunteers, architects, sponsors, venues, members of the press - for participating in our exhibition and ensuring its success !

by Ar. Tina Lau

INTERSECTION thanks the following for their photographs: Bong Chonfan & Lex Chai Ming Tee (Chonfan Bong Photography), Allen Ang & Grace Sow En Hui (Caveman Studio) and Liaw Kheng Boon.



The October **PAMSC Public Design Lecture** was special for several reasons – firstly because it was featured as part of the WAK (What about Kuching) programme of activities, which aimed to promote the local art and culture scene throughout the month of October. It was also special this time because we had two local architects to give lectures; my former business partner at Design Network Architects, **Ar. William Khoo**, and my former colleague, **Ar. Voon Choon Hin** from Arkitek KDI.

For me, it was most special because it was held at the former Ting&Ting Supermarket, renamed Location X for WAK. For those of us old enough to remember, the Ting&Ting Supermarket is more than a physical landmark; it is a social landmark, one with emotional links to our childhood. This is where; in 1969 my grandmother bought me my first taste of Kraft Cheese and Chicken in a Biscuit. For many of us, this is a last pilgrimage before the building is demolished for other commercial development. So, while the new owner kindly allowed WAK to use the building, we wanted to stand in the aisles, climb to the roof terrace, and visit the cold room to hear if the lambs are finally silent. Or as I did, stand and give a speech where bacon was sold over the counter.

The two local architects were joined by **Ms. Esther Wong**, a former winner of Nippon Paints Asian Young Designer Award. Nippon Paints continues to support PAMSC's initiative to raise design awareness to the public through a series of free lectures.

These lectures are available for viewing on YouTube - so far there are more than 20 lectures uploaded by PAMSC. The next public design lectures will be in January 2020.

by Ar. Wee Hii Min





BALANCING ACT

This is my contribution to an architectural installation meant to depict the many facets of architectural life. It was part of PAMSC's celebration of World Architecture Day. This year, we teamed up with WAK (What About Kuching); part of a larger celebration in Kuching to celebrate its arts, culture and lifestyle.

The former Ting & Ting Supermarket was re-named LOCATION X and revamped into an exhibition space for this event. We were each given a 'cubicle' framed by a module of construction scaffolding.

I would like to say that my installation was a carefully curated selection of meaningful objects from my work-life. That would be lying, as Sam and I grabbed this and that from the office last Friday, and hurried over to the exhibition venue and assembled everything before dinner.

That being said, each item of the installation still came together to convey a subtle message of 'balance'; of work and life, of the recent and past, of the completed and on-going, of natural and man-made.

On the wall is a panel of a recent project; the Bagan Specialist Centre Expansion- its near completeness is a reminder that our work is never done; there is always the on-going quest to improve planning, refine details and reduce mistakes.

On the table is a model of the hospital, made from simple white card it challenges the notion that digital is better. Cardboard models have a physicality that belies the gravity of our work, they are often the most honest manifestation of our projects before they are built. There are other items on the table; the pot plant is a reminder that Nature takes precedence, the pieces of stone and timber help to reinforce ideas about colour, tactility and weight. While we strive for perfection, we ourselves are prone to human frailty; the reading glasses and muscle balm are testament to this.

In front of the table is a wooden stool which one of my interns made out of recycled weatherboards from a school. We prefer handmade to store-bought because the former brings with it a personal history shared with its maker. The imperfections of the joints, the chipped corners are traces of human effort and failures, and hopefully lessons for the next stool.

On my left is a collage of sketches, postcards and photos of family members offering a glimpse to a balance between work and life. The squash racket and bicycle helmet are emblems of a physical routine; one represents the element of play which is so important as architects often take themselves too seriously, the other hints at a commitment to be environmentally responsible.

On my right are 'laundry lines' of drawings including some on butter paper; most are hand-drawn, some are drawn over CAD print outs. They represent some of the ideas and conversations that shaped projects over the past 20 years.

Lastly, the question that remains – what do the swimming trunks and goggles represent? They are an antidote to a noisy world, where I can escape to talk quietly to myself.

by **Ar. Wee Hii Min**





Colorbond®
TrueCore®



082 439 257
ugi.com.my



Melissa Chong 012-8869811
ecosteel.com.my

THE TROPICAL MALAYSIAN HOUSE II



8 houses in Sarawak will be featured in Robert Powell's next edition of **The Tropical Malaysian House**, the 'Prof' and photographer Lin Ho have been travelling around Kuching in the past few months visiting the houses, interviewing the owners and architects.

The selected houses are a good cross section of styles, sizes and localities. Megan and Chuan's renovated timber house is in the centre of Kuching, while Chee Wee's bungalow in the Padawan Highlands, Mike Boon's tiny house for his friend is in sharp contrast to Sam Lau's cluster of family villas designed with Andra Matin. William Khoo's Borneo Mansion in fair-faced concrete recently won a Silver Medal at the PAM Awards - one in a series of courtyard houses which will be featured in the book. Mingi's nestled house is 2 blocks linked around a courtyard, while Arlene Chew's Keranji House is a series of pavilions laid out in a mature garden with trees. Min's house for his client's 4 sons has a long floor plan of served and servant spaces.

The book is scheduled to be launched during DATUM:KL next year.

by Ar. Wee Hii Min

SUB-COMMITTEE REPORTS EVENTS & CPD

Topic : Terreal Seminar 2019 Sarawak - Smart Building Envelope in SEA Climate with focus on Passive Design Building

Date: 28th September 2019

Time: 9:00 am - 12:30 pm

Venue: The Waterfront Hotel

Speakers: Mr. Weez Wong, Mr. Ivan Loo and Mr. Mohd Azlan

This technical CPD seminar was sponsored by Terreal Malaysia from KL. They showed us their experiences in providing solutions with regards to roofing insulation, and ventilated facade system concept. They also introduced to us their new cost efficient in-roof PV system - GSE Integration Kit.



Topic : Strata Development Dilemma

Date: 5th October 2019

Time: 9:00 am - 12:30 pm

Venue: PAMSC

Speakers: Ar. Ezumi Harzani Ismail

The seminar on Strata Development Dilemma discussed on the problems that arose and issues that need to be dealt with, in the stratified buildings development in this country. 68 PAMSC members attended the seminar.



Event : Visit to Kim Hin Industry Bhd and Kimgres Marketing Sdn Bhd factory & showroom, in conjunction with Johnson Tiles soft launching event

Date: 19th October 2019

Time: 9:00 am - 1:00 pm

Over 45 PAMSC members joined the event.



PAMSC represented by Deputy Chairman Ar. Chai Si Yong, receiving souvenir of group photo printed on tile, from Dato John Chua, Group Managing Director of Kim Hin Industry Bhd.

Topic : The Architect's Roles and Responsibilities Under the Housing Development Act (Act118) & Related Regulations

Date: 30th November 2019

Time: 8:30 am - 12:30 pm

Venue: Lot 10 Boutique Hotel

Speakers: Ar. Chan Seong Aun

Ar. Chan Seong Aun shared with us his experience in housing projects and gave an overview of Architect's Roles and Responsibilities Under the Housing Development Act (Act118) & Related Regulations in the housing delivery process. The talk was sponsored by Asteel Ajiya and attended by nearly 70 PAMSC members.



Reported by Ar. Leong Pik Shia

ANNOUNCEMENT



COMING
TO
KUCHING
15 FEB 2020

COMING SOON !

GBI Facilitator
Course
Sarawak

28TH FEB - 1ST MARCH 2020

Please Mark Your Calendar !!

A GEOMETRIC TAKE

Geometric prints are classic and modern spins for your living spaces.
WALLCOVERING | FABRIC | CARPET | FLOORING



Flooring: LVT Moduleo Moods

Fabric: Nuevo, Scion

Carpet: Brink & Campman

Wallcovering: Trancoso, Ellis

Goodrich Global Sdn Bhd (386806-P)

KUALA LUMPUR (HQ) | T : (603) 6201 5757

JOHOR BAHRU | T : (607) 3515 757

KOTA KINABALU | T : (6088) 484 357

KUCHING | T : (6082) 415 757 / 425 757

Stay Connected - www.goodrichglobal.com | info@goodrichglobal.com



Singapore (HQ) | China | Hong Kong | India | Indonesia | Malaysia | Myanmar | Philippines | Thailand | United Arab Emirates | Vietnam

SENSE STONE



LIGHT BEIGE
JN2L
8080 | 4080 MATT
6060 | 3060 MATT, LAPPRITO



BEIGE
JN2D
8080 | 4080 MATT
6060 | 3060 MATT, LAPPRITO



LIGHT GREY
JN4L
8080 | 4080 MATT
6060 | 3060 MATT, LAPPRITO



GREY
JN4D
8080 | 4080 MATT
6060 | 3060 MATT, LAPPRITO

SUB-COMMITTEE REPORTS

CSR - MAKING A DIFFERENCE



M.A.D. about making a difference

Recently the local chapter of the Malaysian Institute of Architects (PAMSC) created a new sub-committee for the purposes of making a collective effort to make a difference for the well-being of the local community. Calling themselves MAD – which stands for Making A Difference; the group collaborates with local industry partners, fellow consultants, students and interested members of the general public to work on community projects.

Ar. Tay Buang Chuan is the Chairman for MAD; he believes that small acts of kindness can have large impact and that the important thing is to act. “We want to contribute to the community by utilising our expertise and knowledge, and use this opportunity to engage with people of different backgrounds and beliefs for a common good”.

All MAD events are non-profit - all sponsorships and funding are to be used solely for their projects. In August, MAD painted a block of classrooms at SK St. Andrew's Primary School with the help of 20 school students and their parents and teachers, assisted by local architects and college students. The paint was sponsored by Nippon Paint Malaysia, with lunch and 'ais-krim potong' provided by the kindness of volunteers.

Volunteerism is contagious; soon after the first painting project – a specialist contractor, IPUE Resources Sdn Bhd offered to re-surface and paint the floor of the school's assembly hall. Local architecture students collaborated to come up with a 'lily-pond' floor pattern that IPUE Resources Sdn Bhd installed over 2 weeks, just in time for the start of the school term. Tunku Putra students who took part in the painting project volunteered to design and paint a mural for the classroom block in November.

MAD is constantly on the look-out for CSR projects and partners, with terms and conditions for collaboration. Interested parties are requested to write to info@pamsc.org.my.



Mural Painting at Sarawak General Hospital

This is PAMSC MAD'S third project; designing and installing a mural for the Level 5 corridor of the Hermatology Ward of the Sarawak General Hospital. It is joint - CSR project with SCAN (Society for Cancer Advocacy and Awareness Kuching), Lions Club Kuching and Leo Club St. Teresa in the morning of the 9th November 2019, from 8:30am to 1:30pm.

The mural is 2.9m high and 5.5m long. It took the team the morning to finish the mural along with 2 set up and smaller pieces along the balustrade of the corridor.

The PAMSC team members are Ar. Hajah Noraini Narroden, Lim Chia Wen, Lily Ting Shu Chi, Kong Yean Wei, Hii Wei Sheng, Lau Chee Kiong, Gabrielle Tan, Liaw Kheng Boon and Ar. Tay Buang Chuan.

The paint sponsor is Nippon Paint Malaysia.

Reported by Ar. Tay Buang Chuan



NEW FACULTY OF BUILT ENVIRONMENT BUILDING (UNIMAS)

A new building for the Faculty of Built Environment (FBE) at UNIMAS East Campus, was launched on 11th November 2019 at 11:11 a.m. - officiated by YBhg Tan Sri Datuk Seri Panglima Sulong Matjeraie, Chairman of the UNIMAS Board of Directors.

The FBE is the 10th faculty to be established at UNIMAS; with Sustainable Community Transformation as its area of expertise. The Faculty currently has 147 students enrolled across two degree programs; a three-year Bachelor of Science in Architecture (Hons.) equivalent to LAM Part I, and a four-year Bachelor of Quantity Surveying (Hons.) developed in line with IR 4.0. Additional programs to be included soon are Master of Architecture (LAM Part II), MSc in Construction Design Management, Master of Science (Research) in Built Environment and Doctor of Philosophy (Research) in Built Environment.

The new building is a 12,783 square meter educational facility providing offices and supporting spaces for 3 architecture studios, 4 quantity surveying studios, administration offices, 18 lecturer rooms, 4 seminar rooms, 2 computer labs, a timber workshop, gallery, resource room and building science technology laboratory arranged over 2 levels, featuring interior courtyards.



The signing of the plaque by UNIMAS Chairman of the Board of Directors, YBhg Tan Sri Datuk Seri Panglima Sulong Matjeraie witness by Unimas Faculty members, students and invited representatives from PAMSC, RISM and SHEDA.

by Dona Rose



View of the new entrance foyer.



Students' works displayed.



CMS CEMENT INDUSTRIES SDN BHD
(49256-V)

Portland Limestone Cement **GENERAL PURPOSE CEMENT**

MS EN 197-1 : 2014 - CEM II/A-L 32.5 N

Product of CMS Cement Industries Sdn Bhd
Quality Cement. Eco-Friendly Product

Benefits

- ✓ Better Workability
- ✓ Smoother Finishing
- ✓ Improve Cohesiveness
- ✓ Reduce Bleeding
- ✓ Easy to Mix
- ✓ Improve Slump Retention
- ✓ Eco-Friendly Product
- ✓ Good Flowability

Applications

- General Concrete Structures
- Plastering
- Bricklaying
- Tiling
- Floor Topping
- Brickmaking
- Road Binding
- Floor Screeding
- Soil Stabilisation Binder



SUB-COMMITTEE REPORTS

PRACTICE & GOVERNMENT LIAISON

Dialogue with Professionals by Bomba Sarawak

Date: 23rd Aug 2019 (Friday)

Venue: Bilik Mesyuarat Kenyalang, Bomba HQ

Every year, Bomba Sarawak invites professionals including PAMSC, ACEM Sarawak Branch and Major Councils for a dialogue session to discuss matters arising and new policies by Bomba. During this year's dialogue, PAMSC highlighted to Bomba the following matters:

1. Bomba submission required for Planning Submission
2. Submission requirements for Building Plan e-Submission
3. Submission of Building Plan for minor amendments prior to approval
4. Fire safety guidelines for Long Houses



PAMSC (represented by Ar. Ivy Jong, Ar. Chiew Chung Yee & Ar. Chai Si Yong) attended Dialogue with Professionals by Bomba Sarawak.

Dialogue with YB See Chee How

Date: 16th Aug 2019 (Friday)

Time: 11 am

Venue: Stampin' PKR Office, Batu 3, Kuching

A dialogue session with YB See Chee How who is special officer representing Sarawak for Ministry of Works was arranged in his PKR Stampin's office at 3rd Mile to follow-up with YB on issues highlighted during the last meeting with YB Baru Bian at Kuching Hilton. PAMSC (represented by Ar. Ivy Jong, Ar. Philip Chang, Ar. Peter Wong, Ar. Kevin Wong & Ar. Chai Si Yong) & ACEM Sarawak Branch (represented by Ir. Lainus Ichok, Ir. William Tan, Ir. Wong Leong Teck & Ir. Hii Tiong Koon) attended the dialogue and briefly presented the terms of reference in setting up a Joint Consultative Committee for development in Sarawak.

SBO Review on Bomba Matters

Date: 5th Nov 2019 (Tuesday)

Time: 2.30 pm

Venue: Bomba HQ, Kuching

Bomba invited PAMSC & ACEM Sarawak Branch to go through comments from ACEM Sarawak Branch during the last SBO Review Workshop during June 2019. This 4-hour discussion formulated the final draft for the review of SBO where Bomba Sarawak will recompile the draft to MLGH soonest.



PAMSC represented by Ar. Stephen Liew, Ar. Peter Wong, Ar. Law Kim Chui & Ar. Chai Si Yong attended discussion on review SBO with ACEM Sarawak Branch & Bomba HQ.

Reported by
Ar. Chai Si Yong

Guidelines on Longhouse Fire Safety Dialogue

PAMSC was invited by Jabatan Bomba dan Peyalamat to the dialogue for the development of Guidelines for Fire Safety in Longhouse.

PAMSC representative, Ar. Hajah Noraini Narodden and Ar. Angel Wong Ming Ming attended the dialogue held in Miri on the 26th Nov 2019 at Pejabat Residen Bahagian Miri, Kompleks Islam Sarawak.

Reported by
Ar. Hajah Noraini Narodden



PAMSC was represented by Ar. Hajah Noraini Narodden & Ar. Angel Wong Ming Ming.



PAMSC Design Festival OF PLACE 2020

TENTATIVE PROGRAMME

27th of March 2020 (Friday)

Exhibition of speakers' works and welcome dinner.

28th of March (Saturday)

Design Forum - 4 keynote speakers + 2 guest speakers.

Confirmed speakers:

1/6 **Shunri Nishizawa**

2/6 **Wooi Lok Kuang**

29th of March (Sunday)

Visits to local projects and building sites. Closing ceremony and lunch.

This forum brings together a group of architects and designers who have been able to recapture a 'sense of place' by injecting elements derived indirectly from the peculiarity of a particular place'. (Frampton). Through a selection of their recent projects, they will demonstrate how they do so by being loyal to local context, with respect to traditional craftsmanship and materials despite forces of mass commercialisation.



Stay tuned for more info at www.pamsc.org.my



Journey with us, as we continue to engage the market with technologically enhanced products, shaping the ever-changing construction landscape.

FIND OUT MORE ABOUT US

PENINSULAR MALAYSIA 1700-81-8688 | **SARAWAK** +6082-333-621
SABAH +6088-445-161 | **BRUNEI** +673-244-7155 | **SINGAPORE** +65-6264-1577

lysaghtasean.com

MAIN COMMITTEE YEAR END DINNER

Each December, as the PAMSC committee sit down to take stock, tally accounts and evaluate KPIs: we also use the time to give thanks, set next year's resolutions over a nice Christmas dinner with our friends and colleagues who contributed towards the cause. It is our Chapter's way of appreciating those who volunteered and served in our numerous events.

And each year, the responsibility of planning the dinner falls on the broad shoulders of Ar. Ng Chee Wee who this year brought us to Kechala at Cove 55 for a sumptuous 4-course (only) dinner.

It is also our custom to invite all our Past Chairmen to the dinner; some of whom continue to contribute to the chapter. It is our way to promote fellowship in an informal yet constructive manner. Last night's dinner was partly sponsored by Nippon Paints Malaysia.

by Ar. Wee Hii Min



The dinner venue was at the scenic Cove 55 resort.



It's not often that we have all the PAMSC family in one room, so many group photos were taken.



The sumptuous 4-course dinner was prepared by Chef Andrew Fletcher, accompanied by cocktails and mocktails.



This year end dinner is PAMSC's way of promoting fellowship in an informal yet constructive manner.



MIID REKA AWARDS 2019

Sarawak Tourism Board Office, Kuching – MIID Reka Awards 2019 for Design Excellence – Bronze Award (Corporate Offices)

Sarawak Convention Bureau Office, Kuching - MIID Reka Awards 2019 for Design Excellence – Special Mention (Corporate Offices)

Designer: IDC Architects Sdn Bhd

Both projects originated when both Sarawak Tourism Board (STB) and its sister organisation Sarawak Convention Bureau (SCB) simultaneously decided to move their respective headquarters to Plaza Aurora; a largely vacant 1970s building that was one of Kuching's first modern shopping complexes. STB occupied 1,000 sqm of space on Level 4, while SCB took up a similar floor plate directly below.

Both organisations share similar goals; to raise Sarawak's profile internationally as a world-class travel destination for leisure tourism and business conventions. For both projects, our overall aims were twofold.

Our first aim was to address both organisations' roles as ambassadors of Sarawak's unique culture and natural beauty – to represent them distinctively in terms of design inspiration, mood and ethos.

To do this, we drew on the rich history of Sarawak's many indigenous cultures. At STB, an open steel-and-glass entrance visually extends the space of the reception area well beyond the physical boundaries of the office space. The open reception area links all the major public spaces including the pantry, board room and meeting room into a giant ruai; the main communal space in Iban longhouses.

Similarly for SCB, the front reception is designed as the main socialising and the central organising spine of the layout. Its flexibility of use makes it ideal for hosting large public events as well as intimate office functions.



STB Reception



SCB Reception



STB Boardroom



SCB Boardroom

Our second aim was to capitalise on the fact that two previously disparate departments are on in the same building – to improve opportunities for internal collaborations and exchange of ideas, to strike a balance of spaces for focused individual work, while allowing space for chance encounters between staff.

To address this, we opted for open-plan offices with casual meeting spaces scattered throughout to encourage cross-departmental collaboration, while also reserving space for focused work. Special attention was made to create multi-functional spaces such as a library and staff pantry that also double as casual meeting spaces. The board rooms can be completely opened up with pivot doors, further extending the usability of the public spaces.

STB's brief called for staff of various departments to be grouped around the offices of their respective supervising directors, posing a major design challenge. We responded by using glass walls so that even fairly remote parts of the space would benefit from natural light and visibility. The workstations were designed as large sleek surfaces with suspended cabinets above that allow more uninterrupted working surfaces while avoiding a sense of enclosure.

A particular innovation at STB was the "phone booth", a semi-enclosed casual meeting zone with specially-designed seating and acoustic panels so as not to disturb other staff. These "phone booths" are equipped to enable ad hoc discussions for anything from 2 to 5 people within a stroll of the main workstations, without requiring complete enclosure.

The materials palette for both projects are a contrast of sleek, modern surfaces (polished concrete, perforated metal, glass, black and white) with more rustic ones (stained timber, oxidised steel). Both reception draw inspiration variously from basket-weaving, textile and other traditional design motifs. Custom door handles, glass partition screens, and ceiling acoustic panels were also designed to reflect local inspirations, and provide a rich and varied backdrop to the life of the office.

Both projects were shortlisted in the Corporate Offices category in this year's MIID Malaysian Institute of Interior Designers REKA Awards 2019. Facing stiff competition from dozens of projects across the country, we were humbled to receive these awards from the institute that represented our ideas on our local culture and how they could be interpreted into design briefs in a contemporary setting.

by Ar. Alan Kor Loong Lau



From left to right: Ar. Alan Lau, Puan Sharzede (CEO of STB) and Ar. Ng Chee Wee.

Project Team:

STB Office - Alan Lau, Tina Lau, Tiong Ing Thian, Angeline Chan, Carovin Bong & Alvin Simon
SCB Office - Tina Lau, Alan Lau, Carovin Bong, Alvin Simon

All photographs taken by: Shensnaps Photography

PAM INTERPROFESSIONAL GAMES 2019 REPORT



The Interprofessional Committee decided on 6 games for 2019; Darts, Futsal, Badminton, Golf, Bowling and Basketball.

The first event, Darts, was led by Ricky Hong with a mix of veterans including PAMSC Chairwoman Ar. Ivy Jong, Ar. Phillip Chang and Ar. Desmond Kuek, Jenny Hong, Ar. Angel Wong Ming Ming, Ar. Chung Yng Yng and Ar. Leong Pik Shia as well as young graduates Emmeline Ong and Paul Ng Wei Cheng. Over a full day of intense play and beer drinking, the team managed an impressive tied 2nd place with MIP. The eventual winners AAS were defending champions for 3 years running, so it was always a tall order to displace them.

The next event Badminton was led by Ar. Jascinta Yii and Ar Bong, with a strong showing from Ar. Ng Chun Chien, Ar. Lee Joon Kien, Ar. Bong Kuet Leng, Ar. Ng Woei Shyan and young graduates Sharon Thien, Louis Sia and Stanley Sim. It was a battle of endurance as the competition stretched over two days. With PAMSC in 2nd place, our highest standing in this event. The eventual winners MIA had a strong state player and proved difficult to overcome, winning convincingly against all the other teams.

Golf was held at Samarahan Golf Club with a strong showing with 7 teams participating. Through the blistering heat on the golf course, our team led by Ar. Henry Chuo and Ar Brian Chien. It was a strong showing by our group which includes Ar. Wan Liz, Ar. Simon Woon, Ar. Vincent Tan, Ar. Mike Boon, Ar. Peter Wong, Ar. Francis Liaw, Ar. Michael Tan, Ar. Gerald Law, Ar. Liew Nam Boon and Ar. Sam Lau. In the end, the Surveyors RISM knew the lay of the land and won convincingly against all the other teams. PAMSC placed 6 in the overall event.

Futsal came next and was led by Ar. Wee Liang Cheng and Ar. Leslie Hon with both private and JKR architects in the team. Lawrence Choo, Kushahrin Sadikin, Abdul Muizz, Muhammad Oliver, Awang Hasim, Mohd Iswandi and Mohd Qarib. The team trained tirelessly in the lead up to the games, but had a high mountain to climb with IEM's young guns fresh from university games crushing all teams. PAMSC managed 5th place in the event which was respectable considering the competition.

Bowling was organized by PAMSC and led by Jasper Ling and Ar. Sam Lau, with 8 teams participating in the event. Held in King Centre Mega Lanes on a quiet Saturday afternoon, the tension was high with teams jostling for podium

finishes. Team IEM had a strong balanced team in a close battle for the top 3 teams. PAMSC managed a strong 2nd place finish with Ar .Wong Siew Ling, Ricky Hong, Mohd Yusrizal and Mohd Qarib. All teams enjoyed the event with many institutions having a cheerleading squad notably MIP and AAS.

The last event was organized by PAMSC as well and led by Ar. Sam Lau and Mervyn Wong. This was the first Mixed Basketball league game in the games as well as Sarawak. Tension was high with AAS and IEM who were vying for the top spot. With the mixed rules, girls ruled the paint and that proved the turning point with MIA beating the teams with two strong female players. IEM placed 2nd and PAMSC won a close match for 3rd against an inspired MMA team. There was a strong sense of sportsmanship as all teams thoroughly enjoyed the games and companionship. With many teams expressing interest to continue the league after the IPG Games. Special thanks to Emmeline Ong, Elsa Jane, Lim Chia Wen, Audrey Lau, Adrian Wong, Goh Eng Teng, Ar. Michael Chuo, Lau Chee Kiong, Paul Ng, Liang Jie and Nor Arif bin Nawawi. They sacrificed many weekends for training under Mervyn Wong.

The crowning of the champions was held at Sarawak club on the 19th October 2019 the final standings were as follows:

- | | | |
|----|-------------|---------------|
| 1. | IEM | – 40.5 points |
| 2. | AAS | – 34 points |
| 3. | MIA & PAMSC | – 33.5 points |
| 4. | MMA | – 27.5 points |
| 5. | RISM | – 19.5 points |
| 6. | MIP/PFS | – 16.5 points |
| 7. | IKAM/SIAS | – 7 points |

PAMSC managed a respectable 3rd place, with a chance for joint 2nd place if we secured the 0.5 points from darts. PAMSC would like to extend their appreciation to **Jotun Paints (Malaysia) Sdn Bhd** and **Imetal (M) Sdn Bhd** for their sponsorship for this event. We also like to extend our thanks to Ar. Peggy Wong for her sketch featured on the team T-shirt's. I would also like to personally thank my captains, Ricky Hong (Darts), Ar. Jascinta Yii (Badminton), Ar Wee Liang Cheng (Futsal), Ar. Henry Chuo (Golf), Jasper Ling (Bowling) and Mervyn Wong (Basketball).

by Ar. Sam Lau





DML Products (Borneo) Sdn. Bhd.

Manufacturer of Metal Ceiling and Louvers



• Strip Ceiling •



• Strip Fascade •



• Sun Louvres •



• Ventilation Louvres •



• Box Louvres •



• Aerofoil •



• Aeropoint •



• Tile Ceiling •

DML PRODUCTS (BORNEO) SDN BHD (742099-D)
(Manufacturer of Metal Ceiling and Louvers)

138 Block 15, MTLD, Jln Kuching Ranger Depot, Sg Tapang off BT 7, 93250 Kuching, Sarawak. Email: service@dml.com.my Website: www.dml.com.my
Tel (Office): 082-613099 Mobile: +6016-8890192 (Vivian Thian) / +6016-8890172 (Paddy Wong) Fax: 082-613105

QUALITY ENSURED



BERMUDA-P ROOFING PROFILE WITH ENVIOSHIELD - COATING

**WE PROVIDE
ROOFING AND BUILDING MATERIALS
THAT EVERYONE PREFER**

ASTEEL SDN BHD (393042-D)

LOT 712, BLOCK 7

DEMAK LAUT INDUSTRIAL PARK

93050, KUCHING, SARAWAK.

TEL : +6082 433888

FAX : +6082 433833

www.asteel.com.my

www.facebook.com/asteel/group/



ASTEEL GROUP

OUR MATERIAL BRAND:

envio
Affordable Shelter for Everyone

MBKS SCHOOL GARDEN & LANDSCAPE COMPETITION 2019



PAMSC was again invited by MBKS to participate in their joint judging process for 2019 primary and secondary school garden and landscape competition.

This annual event was initiated by MBKS and was well received with good response from many schools, including 2 new schools this year. The 2-day judging process was conducted on 6th and 7th of August 2019; involving 16 primary schools and 7 secondary schools.

The winners for this year 2019 are SJK Chung Hua No.5 for primary school category and SMK Pending for secondary school category. These winners had won the judges over with their commitment, creativity and their knowledge in nurturing and maintain the school gardens.

Overall, all the schools had improved greatly the school compound with lush green landscape and interesting art work. It has also provides a safer and conducive study environment. Kudos to all the teachers, students and gardeners who did a good job; not by obligations and duty but with their hearts.

by **Ar. Thang Suh Chee**



5 STEPS TO BUILD A PERFECT WALL



For smoother walls, you can rely on QuickMix® to be with you every step of the way. Whether it is for plastering, base coating or top coating, we have the right solutions for every layer, helping you to achieve a smooth wall.



POSTCARDS FROM THE EDGE :

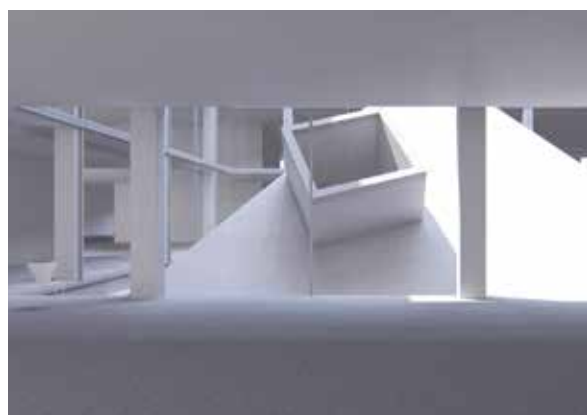
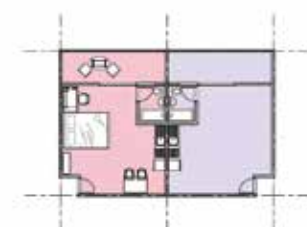
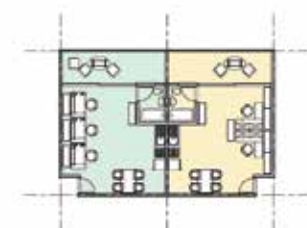
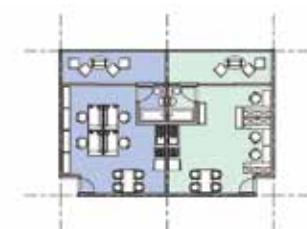
SEAN WEE • DUNCAN OF JORDANSTONE COLLEGE OF ART-UNIVERSITY OF DUNDEE

Our fourth year project called for a workplace on the site of a derelict bank office in Edinburgh's New Town.

Surveys reported that Edinburgh was one of the most expensive cities in the UK for students to live and work in. Locals were fond of the office site, and did not want it to be demolished.

I approached this as an adaptive reuse project, retaining most of the existing structures and systems. New openings and updates to the cladding improved lighting and ventilation.

Old office areas were turned into living and working spaces for students and young adults to train and work together. New public spaces were also introduced in and outdoors.



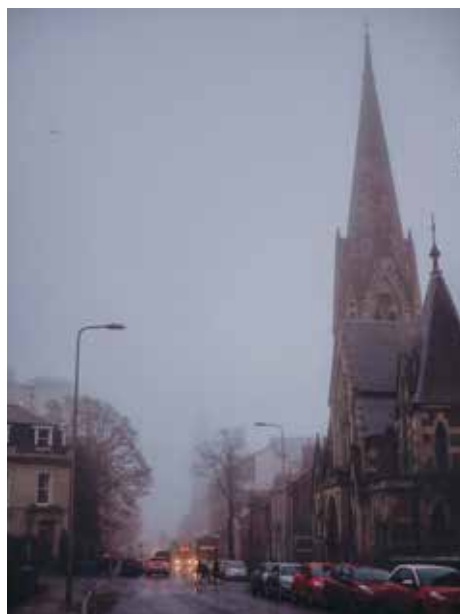
Over the summer break, I worked with a local architect on the Egyptian Halls competition organised by the Alexander Thomson Society, inviting solutions for the building's reuse.

Our proposal comprised of new modern office spaces, surrounding an open ground floor courtyard area roofed by a large pyramidal structure. The existing facade was maintained.

The final year thesis calls for a sustainable strategy in response to studentification in Dundee, exploring the relationship between architecture and any wider social processes.

Our research identified issues with overcrowding, while students rank among the highest in needing mental health aid. We aim to develop housing and provide community facilities.

Apart from experiencing new teaching styles and career opportunities, being abroad has made me learn to adapt and show humility - progressing my personal growth and development.



Born and raised in Kuching. Studied Bachelor of Science in Architecture at Taylor's University. Photographer for the Association of Dundee Architecture Students Society. Enjoys life in Scotland, but really misses laksa and kueh chap.